

OFC/WHSE  
LEASE



## RH NORTH CREEK BUSINESS CENTER, Building 1 & 3

11812-11824 North Creek Parkway N | Bothell, WA

**Brian Stewart**

425.289.2222

brians@rosenharbottle.com

425.454.3030  
rosenharbottle.com

**Caleb Farnworth, CCIM**

425.289.2235

calebf@rosenharbottle.com

PO Box 5003  
Bellevue, WA 98009 - 5003



# CLASS A OFFICE AND WAREHOUSE SPACES

1,132 SF - 5,067 SF Available

\$18.50 - \$23.00/SF, NNN

## LOCATION FEATURES:

- Class A Corporate Campus
- On-Site Deli and Childcare
- Nearby Amenities: Restaurants, Retail Shops, Food Trucks, Corporate Marriott, Walking Trails, Sports Fields, & Fitness Center
- Quick Access to I-405, SR-522 & Downtown Bothell

## BUILDING 1 DETAILS:

- Extended window line provides abundant natural light
- Includes lab space
- Building elevator
- Building signage available
- Flexibility in demising space

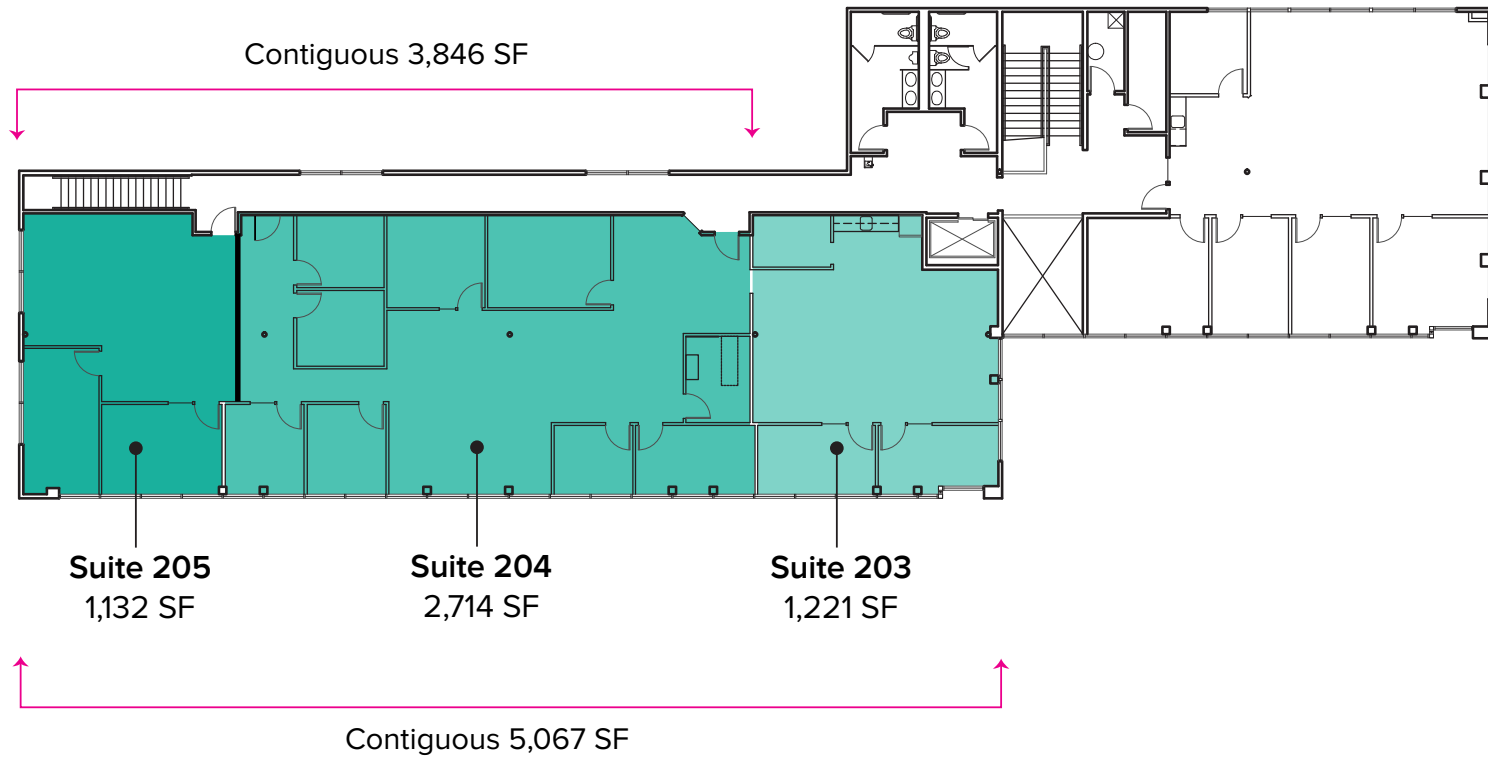


Building 3 (11824)



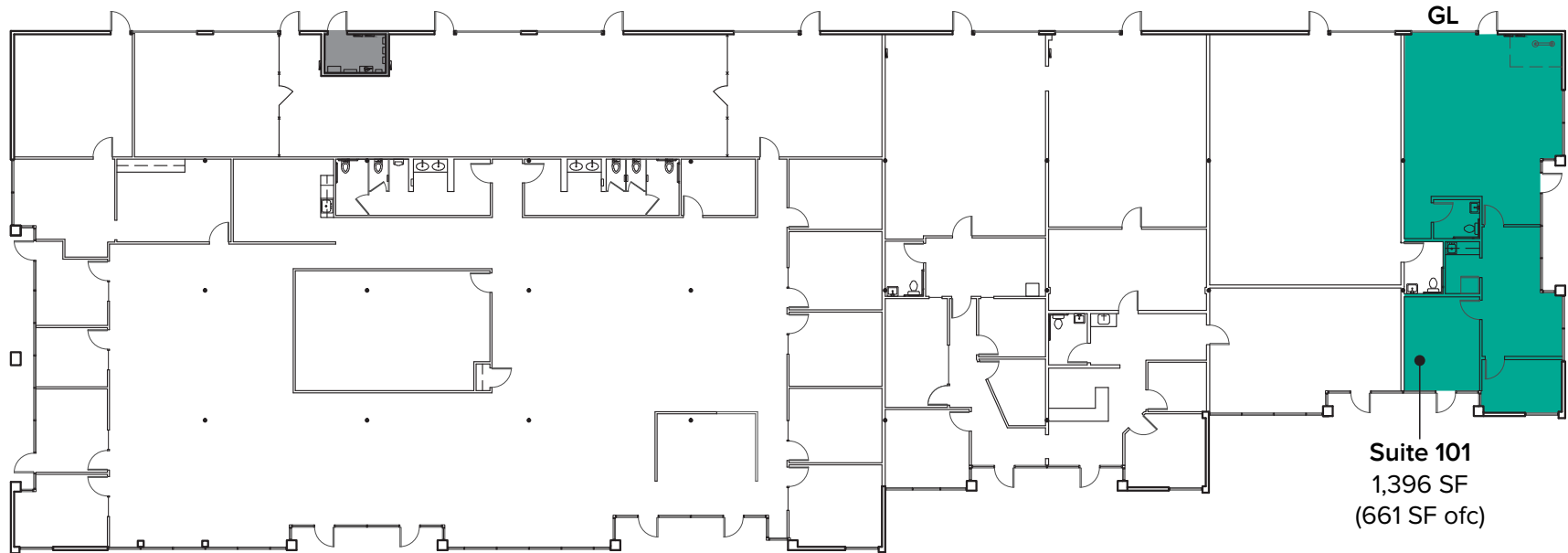
# BUILDING 1 (11812) FLOOR PLAN

Suite	SF	Rate	Available
1-203	1,221 SF	\$23.00/SF, NNN	11/1/2020
1-204	2,714 SF	\$22.50/SF, NNN	11/1/2020
1-205	1,132 SF	\$23.00/SF NNN	Now
Contiguous	5,067 SF	\$22.00/SF, NNN	11/1/2020



# BUILDING 3 (11824) FLOOR PLAN

Suite	SF	Rate	Notes
3-101	1,396 SF (661 SF ofc)	\$18.50/SF, NNN	Office/Warehouse space with 3 direct entrance. 1 PO, 1 restroom, break room, reception area, open warehouse area, and 1 GL door. <b>Available now.</b>




# CORPORATE NEIGHBORS



## LEGEND:

- 01 AT&T
- 02 Valeant Solta Medical
- 03 General Dynamics
- 04 LuxerCare
- 05 ADT Security
- 06 Google
- 07 AT&T
- 08 United Healthcare Services
- 09 Progressive, Banner Bank
- 10 HUB International
- 11 State Farm
- 12 Talentwise
- 13 Puget Sound Energy
- 14 Tetra Tech
- 15 T-Mobile

### DRIVE TIMES:

I-405 (  ): 3 Minutes  
 Downtown Bothell: 6 Minutes  
 Downtown Woodinville: 6 Minutes

