

# EASTLAKE BUSINESS PARK

18336-18398 Redmond-Fall City Road, Redmond, WA 98052



## REDMOND INCUBATOR SPACE

Suite	Total SF	Office SF	Rent/ Month	NNN	Total/ Month	Avail
18388	2,197 SF	781 SF	\$2,304	\$769	\$3,073	11/1/18

Notes: 1 GL, open office/showroom, 1 PO, 1 RR and clear-span warehouse.

### FEATURES:

- Nearby Amenities Include Home Depot, Whole Foods, Chipotle, Jimmy John's & More
- Quick Access to SR 520
- 14' - 16' Clear Height in Warehouse
- GL Rollup Doors
- Professional, Business Park Setting



For more information, contact:

ROSEN~HARBOTTLE  
COMMERCIAL REAL ESTATE

**Caleb Farnworth, CCIM**

(425) 289-2235

calebf@rosenharbottle.com

www.rosenharbottle.com

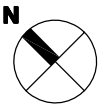
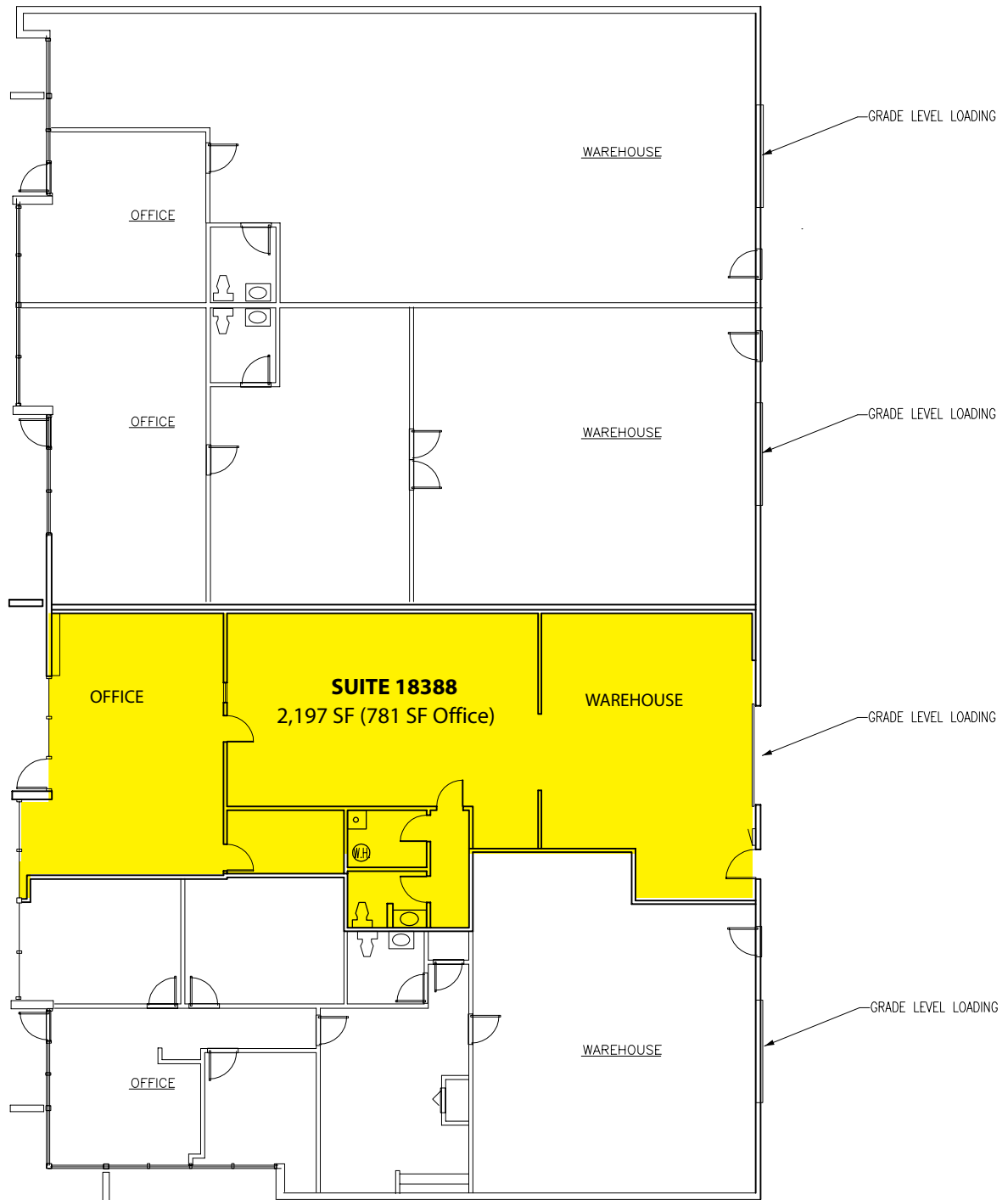
Rosen~Harbottle Commercial Real Estate | P.O. Box 5003 Bellevue, WA 98009-5003  
phone: (425) 454-3030 fax: (425) 454-6705 | www.rosenharbottle.com

The information provided has been obtained from sources believed reliable. While we do not doubt its accuracy, we have not verified and make no guarantee, warranty or representation about it. It is your sole responsibility to independently confirm its accuracy and completeness.

# EASTLAKE BUSINESS PARK

18336-18398 Redmond-Fall City Road, Redmond, WA 98052

## BUILDING E



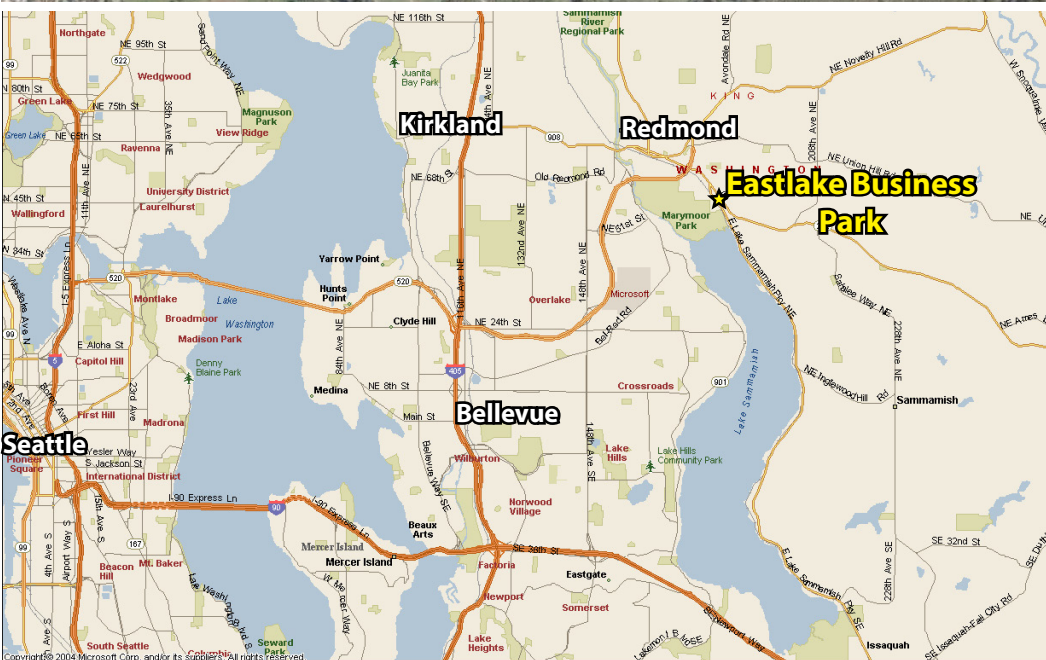
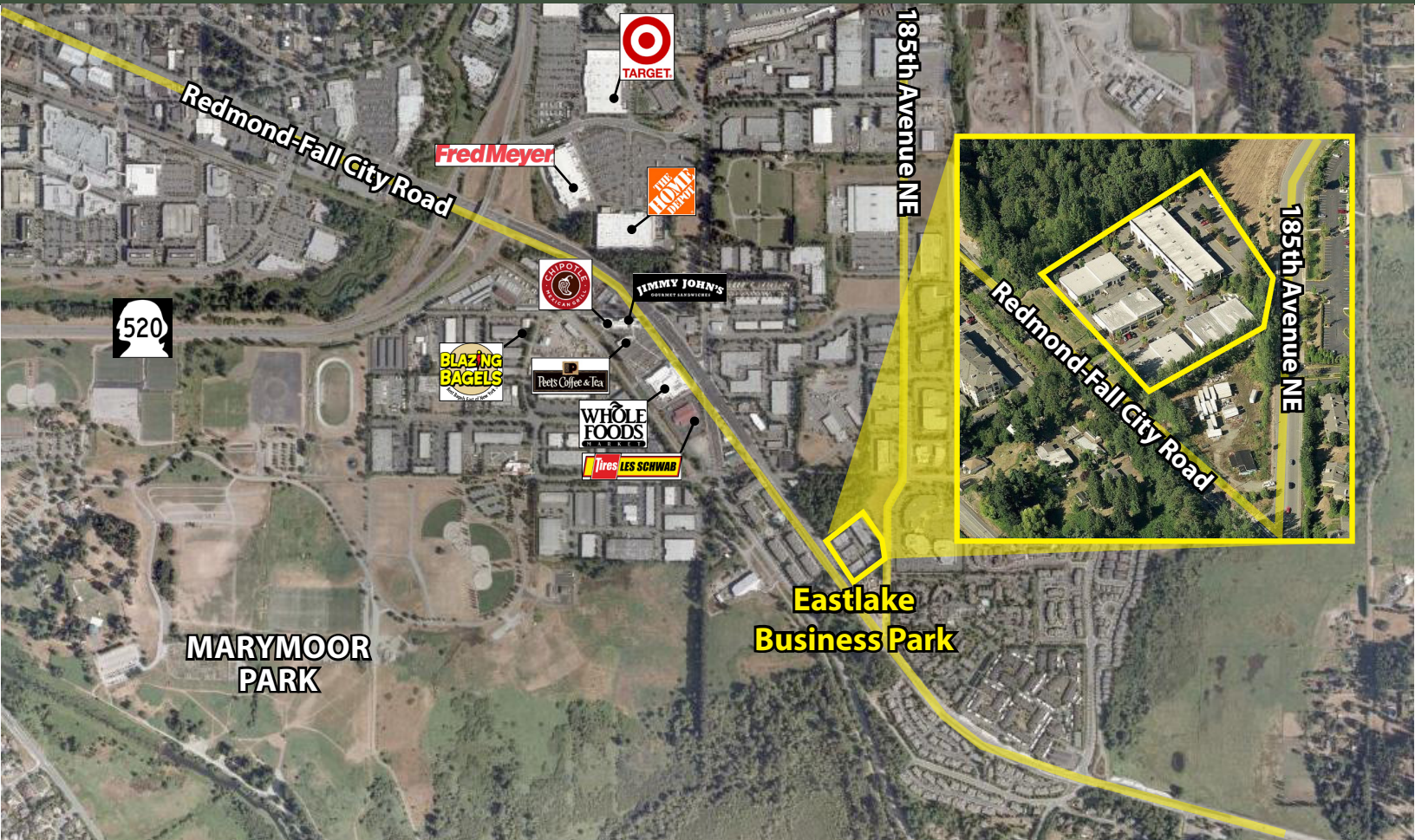
Rosen~Harbottle Commercial Real Estate | P.O. Box 5003 Bellevue, WA 98009-5003  
phone: (425) 454-3030 fax: (425) 454-6705 | [www.rosenharbottle.com](http://www.rosenharbottle.com)

The information provided has been obtained from sources believed reliable. While we do not doubt its accuracy, we have not verified and make no guarantee, warranty or representation about it. It is your sole responsibility to independently confirm its accuracy and completeness.



# EASTLAKE BUSINESS PARK

18336-18398 Redmond-Fall City Road, Redmond, WA 98052



For more information, contact:  
**ROSEN~HARBOTTLE**  
**COMMERCIAL REAL ESTATE**  
**Caleb Farnworth, CCIM**  
(425) 289-2235  
calebf@rosenharbottle.com  
www.rosenharbottle.com

Rosen~Harbottle Commercial Real Estate | P.O. Box 5003 Bellevue, WA 98009-5003  
phone: (425) 454-3030 fax: (425) 454-6705 | www.rosenharbottle.com

The information provided has been obtained from sources believed reliable. While we do not doubt its accuracy, we have not verified and make no guarantee, warranty or representation about it. It is your sole responsibility to independently confirm its accuracy and completeness.