

Mt. Si Village Shopping Center

330 Main Avenue S, North Bend, WA 98045



RETAIL & OFFICE/MEDICAL SPACE FOR LEASE

800 SF & 2,420 SF Available

\$20.00/SF, NNN

FEATURES:

- Floor to Ceiling Windows
- New Bartell Drugs Store Open 1 Block East
- Located Between Premiere Outlet Mall & Downtown
- Ace Hardware Anchor Tenant
- Abundant Parking

For more information, contact:

ROSEN~HARBOTTLE
COMMERCIAL REAL ESTATE

Caleb Farnworth, CCIM

(425) 289-2235

calebf@rosenharbottle.com

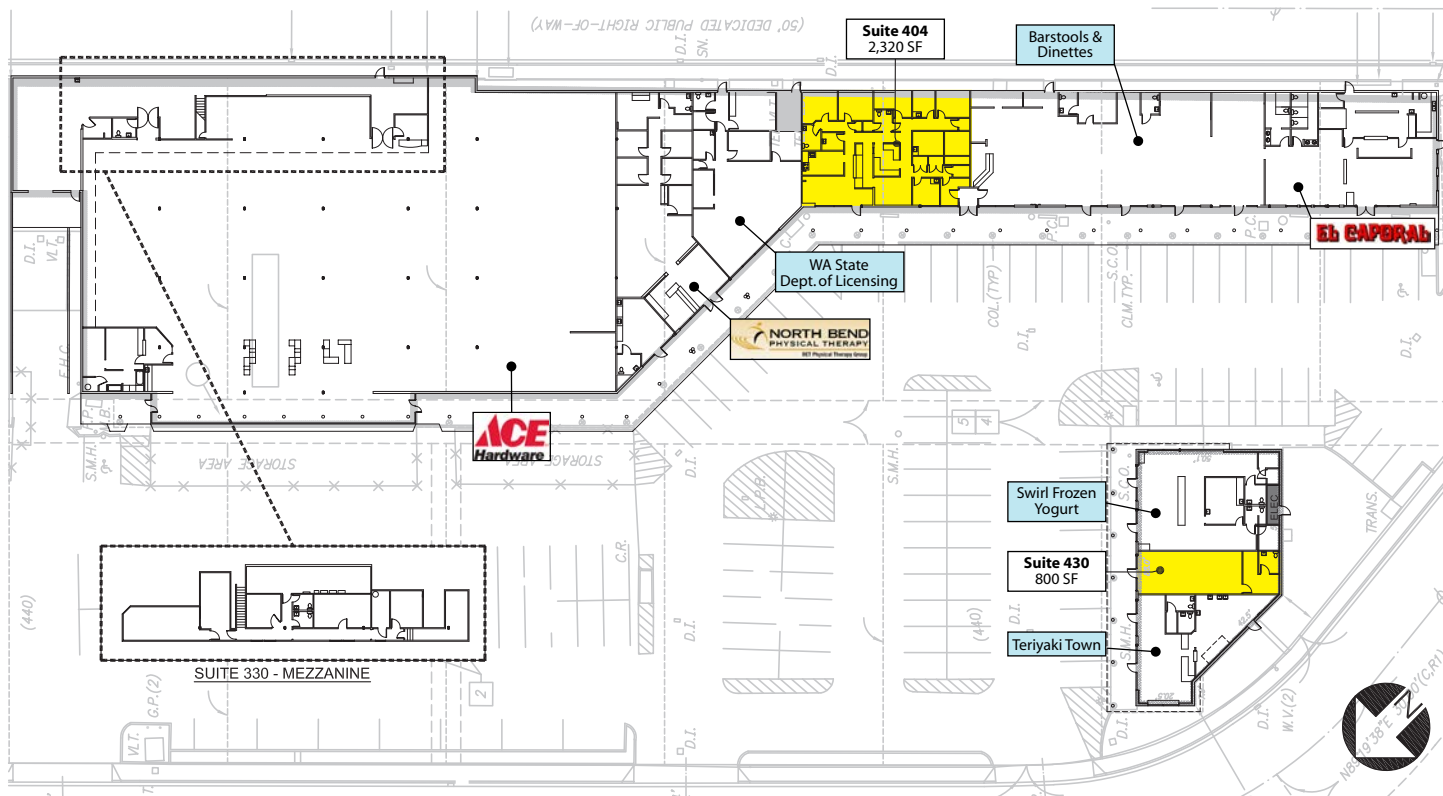
www.rosenharbottle.com

Rosen~Harbottle Commercial Real Estate | P.O. Box 5003 Bellevue, WA 98009-5003
phone: (425) 454-3030 fax: (425) 454-6705 | www.rosenharbottle.com

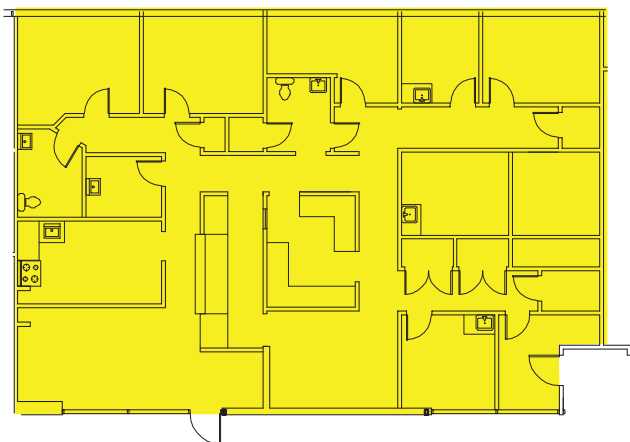
The information provided has been obtained from sources believed reliable. While we do not doubt its accuracy, we have not verified and make no guarantee, warranty or representation about it. It is your sole responsibility to independently confirm its accuracy and completeness.

Mt. Si Village Shopping Center

330 Main Avenue S, North Bend, WA 98045

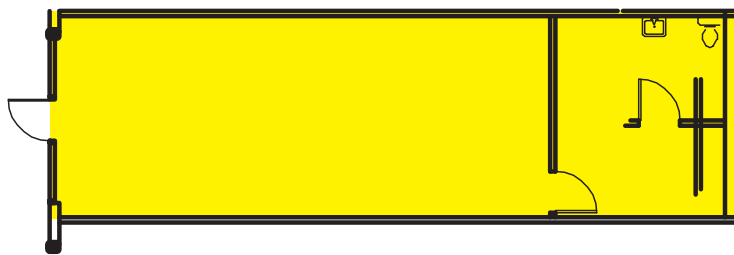


Suite 404: 2,320 SF



- Existing clinic with numerous POs, reception and waiting area
- Plumbing throughout

Suite 430: 800 SF



- Open space with small back office area
- 1 Restroom

Floor plans as shown are not to scale.

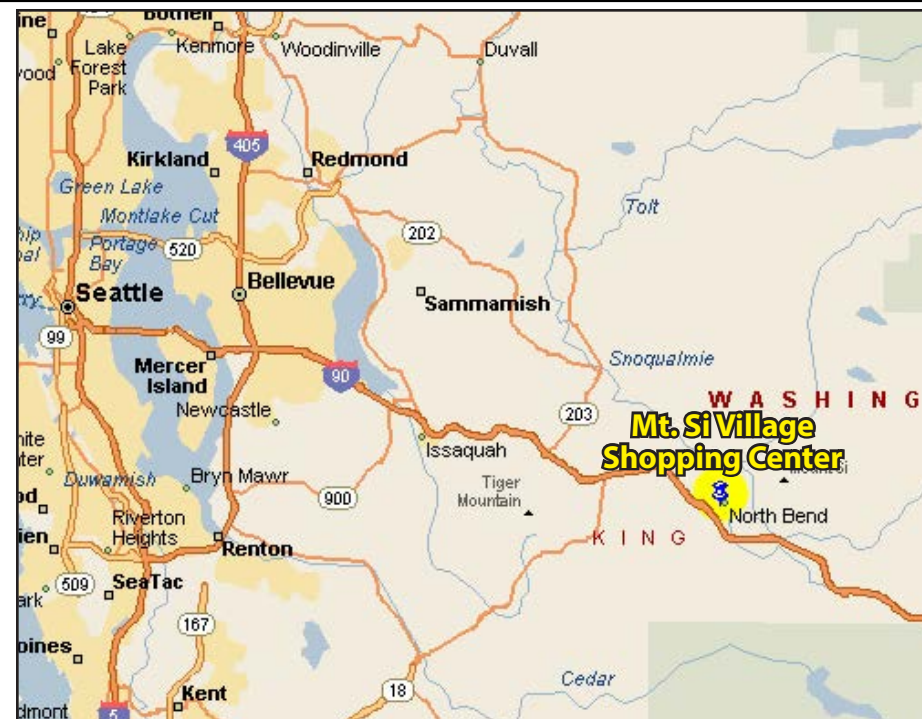
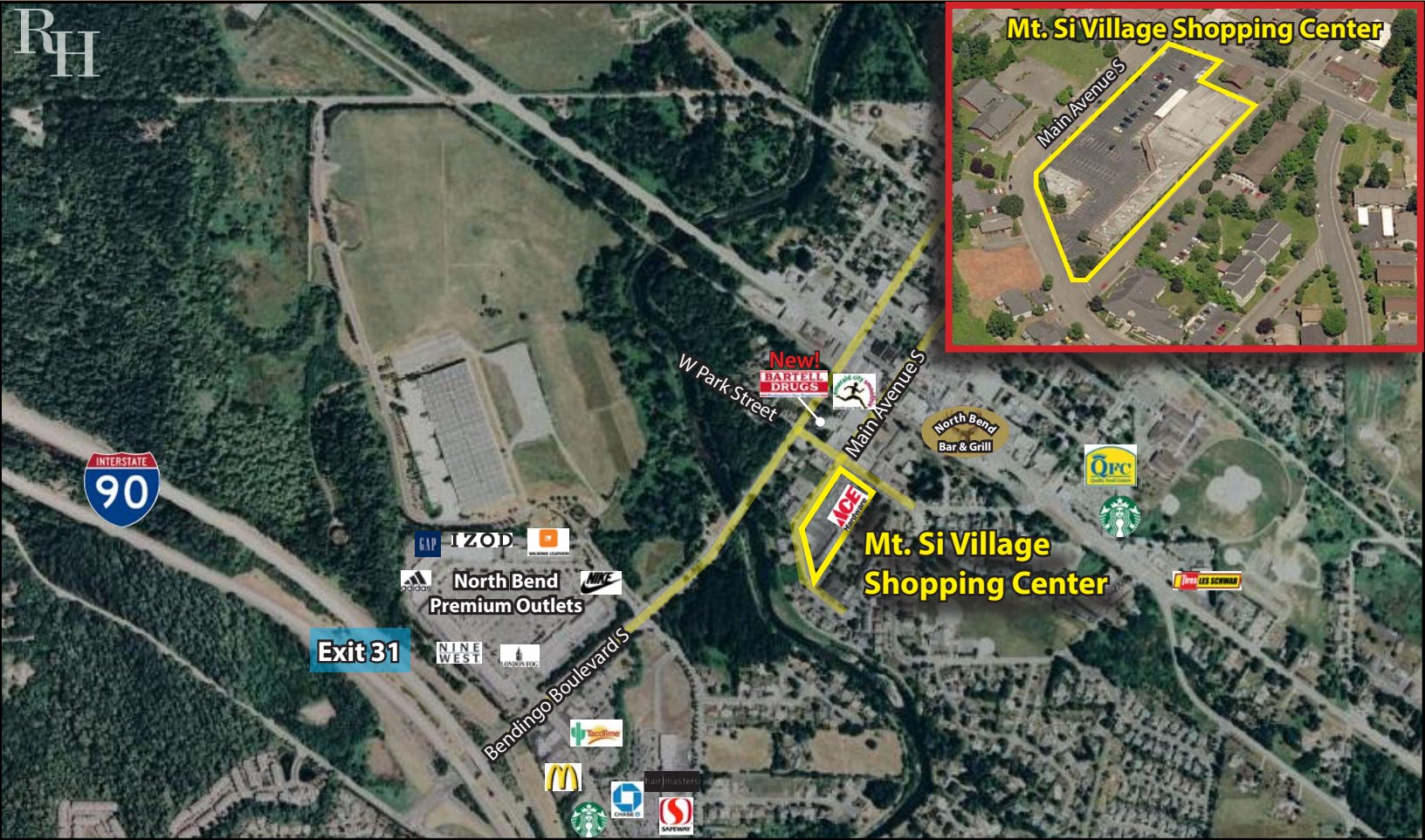
Rosen~Harbottle Commercial Real Estate | P.O. Box 5003 Bellevue, WA 98009-5003
 phone: (425) 454-3030 fax: (425) 454-6705 | www.rosenharbottle.com

The information provided has been obtained from sources believed reliable. While we do not doubt its accuracy, we have not verified and make no guarantee, warranty or representation about it. It is your sole responsibility to independently confirm its accuracy and completeness.



Mt. Si Village Shopping Center

330 Main Avenue S, North Bend, WA 98045



For more information, contact:

ROSEN~HARBOTTLE
COMMERCIAL REAL ESTATE

Caleb Farnworth, CCIM
(425) 289-2235
calebf@rosenharbottle.com

www.rosenharbottle.com

Rosen~Harbottle Commercial Real Estate | P.O. Box 5003 Bellevue, WA 98009-5003
phone: (425) 454-3030 fax: (425) 454-6705 | www.rosenharbottle.com

The information provided has been obtained from sources believed reliable. While we do not doubt its accuracy, we have not verified and make no guarantee, warranty or representation about it. It is your sole responsibility to independently confirm its accuracy and completeness.