

# NORTHCREEK BUSINESS PARK

17901 Bothell-Everett Highway, Bothell, WA 98012



For more information, contact:

**ROSEN~HARBOTTLE  
COMMERCIAL REAL ESTATE**

**Brian Stewart**  
(425) 289-2222  
brians@rosenharbottle.com

[www.rosenharbottle.com](http://www.rosenharbottle.com)

**RETAIL/OFFICE SPACE**  
**1,062 SF - 2,372 SF Available**  
**\$18.50/SF, NNN**

## FEATURES:

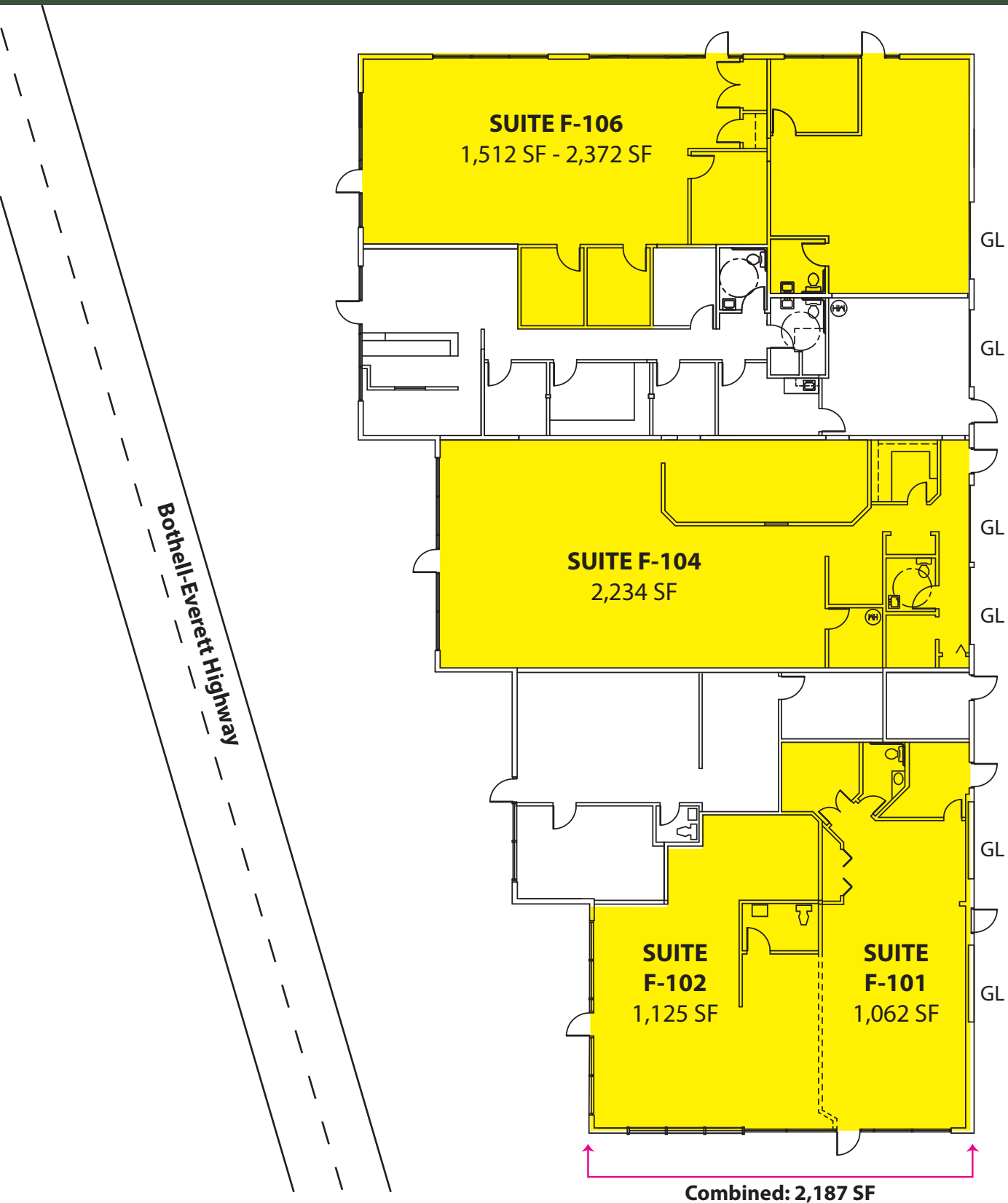
- Exposure to Bothell-Everett Highway
- Monument & Pylon Signage Available
- High-Image, Ample Glass
- Quality Concrete-Tilt, High-Tech Building
- Grade-Level Loading
- NNN Expenses: \$6.58 / SF
- 5% Commission

Rosen~Harbottle Commercial Real Estate | P.O. Box 5003 Bellevue, WA 98009-5003  
phone: (425) 454-3030 fax: (425) 454-6705 | [www.rosenharbottle.com](http://www.rosenharbottle.com)

The information provided has been obtained from sources believed reliable. While we do not doubt its accuracy, we have not verified and make no guarantee, warranty or representation about it. It is your sole responsibility to independently confirm its accuracy and completeness.

# NORTHCREEK BUSINESS PARK

17901 Bothell-Everett Highway, Bothell, WA 98012



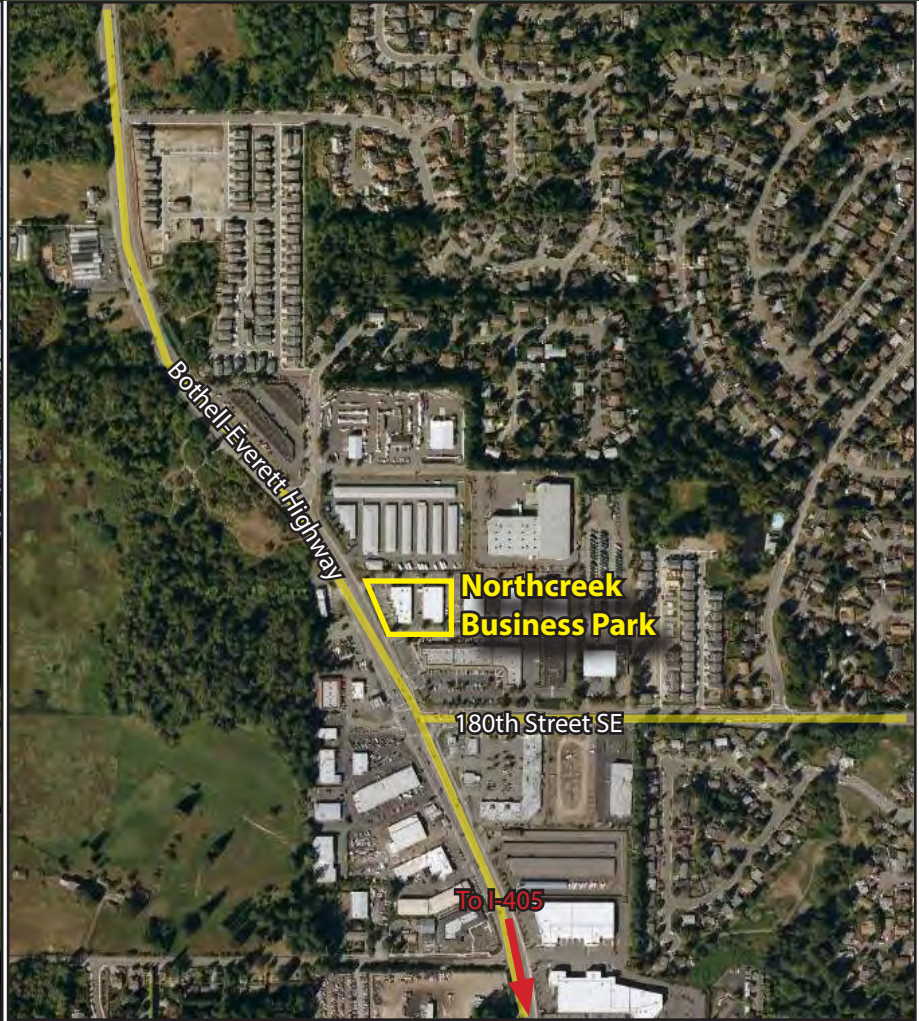
Rosen~Harbottle Commercial Real Estate | P.O. Box 5003 Bellevue, WA 98009-5003  
phone: (425) 454-3030 fax: (425) 454-6705 | [www.rosenharbottle.com](http://www.rosenharbottle.com)

The information provided has been obtained from sources believed reliable. While we do not doubt its accuracy, we have not verified and make no guarantee, warranty or representation about it. It is your sole responsibility to independently confirm its accuracy and completeness.



# NORTHCREEK BUSINESS PARK

17901 Bothell-Everett Highway, Bothell, WA 98012



For more information, contact:

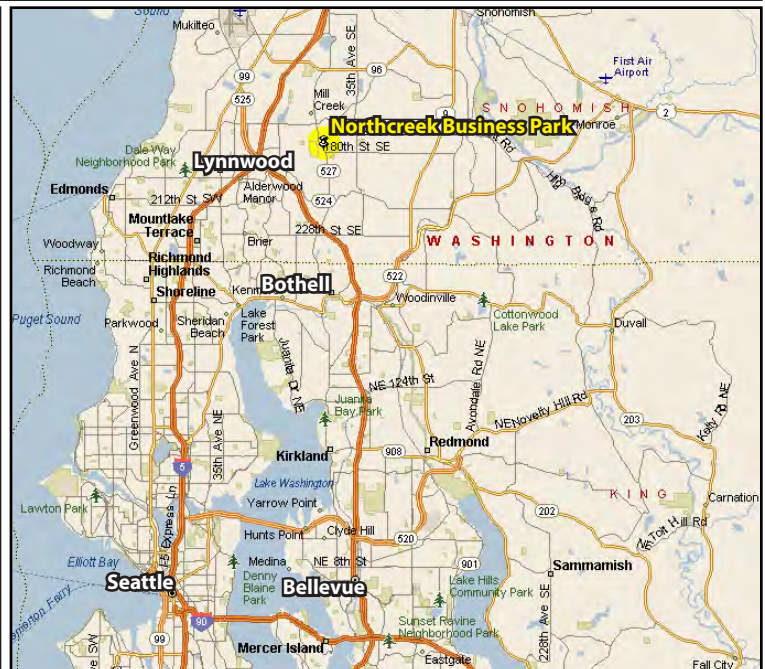
**ROSEN~HARBOTTLE  
COMMERCIAL REAL ESTATE**

**Brian Stewart**

(425) 289-2222

[brians@rosenharbottle.com](mailto:brians@rosenharbottle.com)

[www.rosenharbottle.com](http://www.rosenharbottle.com)



Rosen~Harbottle Commercial Real Estate | P.O. Box 5003 Bellevue, WA 98009-5003

phone: (425) 454-3030 fax: (425) 454-6705 | [www.rosenharbottle.com](http://www.rosenharbottle.com)

The information provided has been obtained from sources believed reliable. While we do not doubt its accuracy, we have not verified and make no guarantee, warranty or representation about it. It is your sole responsibility to independently confirm its accuracy and completeness.