

OFFICE
LEASE



LYNNWOOD EAST BUSINESS PARK

2031 196th Street SW | Lynnwood, WA

Caleb Farnworth, CCIM

425.289.2235

calebf@rosenharbottle.com

425.454.3030
rosenharbottle.com

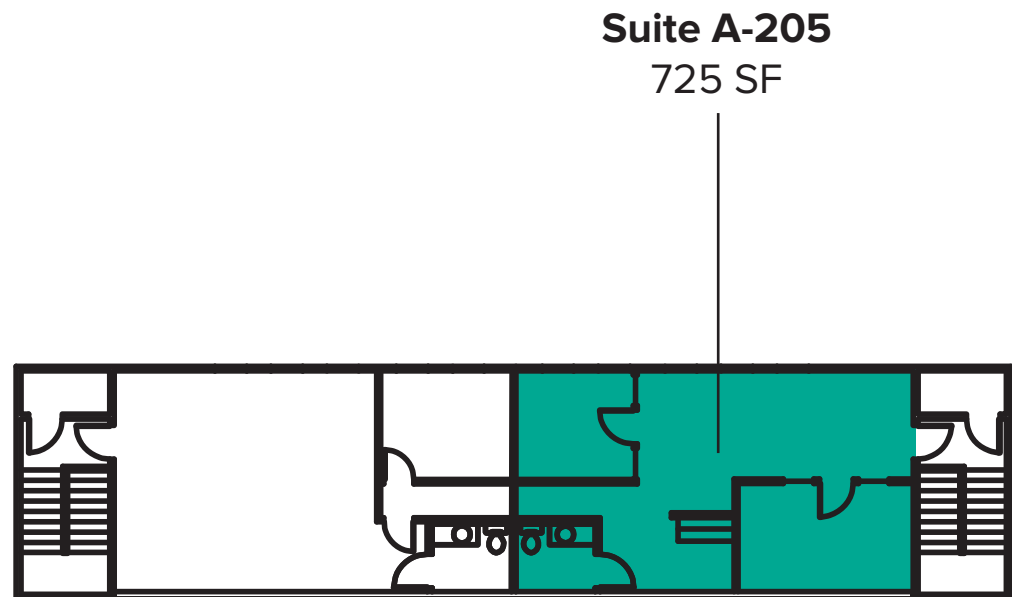
PO Box 5003
Bellevue, WA 98009 - 5003



SUITE A-205 FLOOR PLAN

SUITE FEATURES:

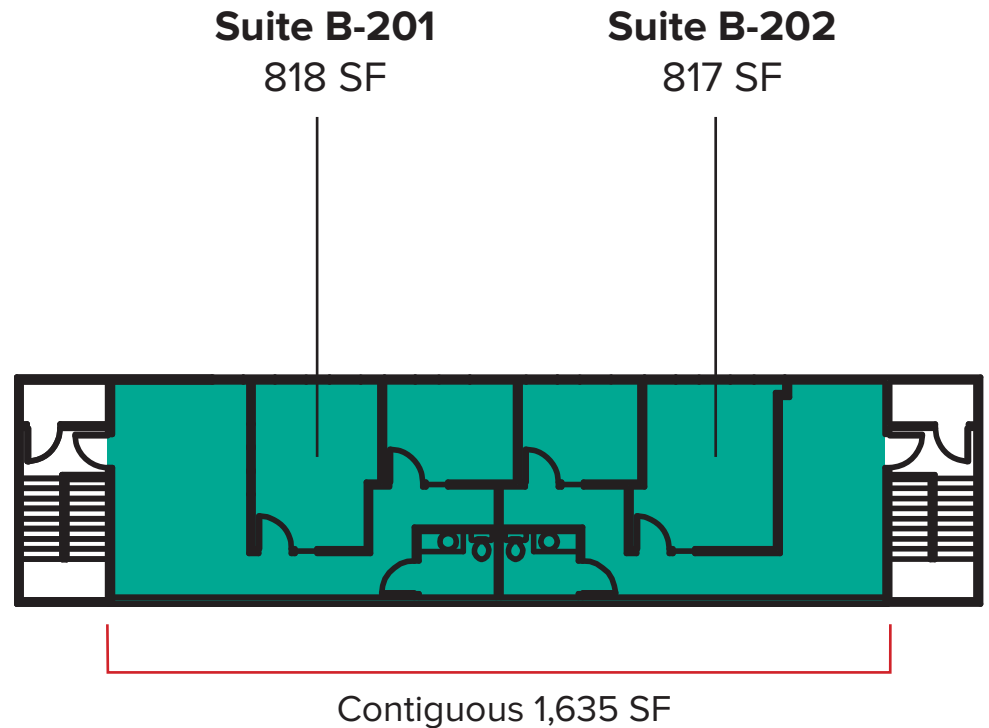
- **Available Now**
- **725 SF**
- **\$1,195/Month, Modified Gross**
- **Second Floor Office Suite with Natural Light**
- 2 Private Offices, Open Office Area, and 1 Restroom
- Abundant Parking
- Monument Signage and Building Signage Available
- Immediate Access to I-5, I-405, and SR-525



SUITE B-201/202 FLOOR PLAN

SUITE FEATURES:

- **Available 7/1/2019**
- **817 SF - 1,635 SF**
- **\$2,450/Month, Modified Gross**
- **Second Floor Office Suite with Natural Light**
- 4 Private Offices, Open Office Area, Reception Area, and 2 Restrooms
- Abundant Parking
- Monument Signage and Building Signage Available
- Immediate Access to I-5, I-405, and SR-525



LOCATION MAP

