

RH North Creek Business Center

11810-11824 North Creek Parkway N, Bothell, WA 98011



Building 1



Building 3



Building 2

OFFICE, TECH/ASSEMBLY & FLEX 3,975 SF - 46,205 SF Available

Bldg-Suite	Square Feet	Available
1-101	3,975 SF-6,155 SF (3,975 SF ofc)	Now
Tech/assembly space with hood, plumbing. Office with POs, storage, break room, conference room.		
1-104/105	4,767 SF (3,075 SF ofc)	1/1/2016
Office/warehouse space with signage on North Creek Parkway & GL loading.		
2-100	7,421 SF - 24,705 SF	1/1/2016
Tech/assembly: HVAC throughout & versatile loading. Contiguous with Building 4 for 46,205 SF total.		
3-104/105	10,810 SF (8,264 SF ofc)	10/1/2015
Office/warehouse space with GL loading.		

4-100 9,800 SF - 21,500 SF Now
Full building available; office build out. Contiguous with Building 2 for 46,205 SF total.

FEATURES:

- Class A Corporate Image
- Building Signage Available
- Prestigious North Creek Location
- Nearby Amenities: Restaurants, Retail, Childcare, Hotel, & Sports Fields
- Quick Access to I-405, SR-522 & Downtown Bothell

Rosen~Harbottle Commercial Real Estate | P.O. Box 5003 Bellevue, WA 98009-5003
phone: (425) 454-3030 fax: (425) 454-6705 | www.rosenharbottle.com

The information provided has been obtained from sources believed reliable. While we do not doubt its accuracy, we have not verified and make no guarantee, warranty or representation about it. It is your sole responsibility to independently confirm its accuracy and completeness.



For more information, contact:

ROSEN~HARBOTTLE
COMMERCIAL REAL ESTATE

Brian Stewart

(425) 289-2222

brians@rosenharbottle.com

Caleb Farnworth, CCIM

(425) 289-2235

calebf@rosenharbottle.com

www.rosenharbottle.com

RH North Creek Business Center

11810-11824 North Creek Parkway N, Bothell, WA 98011

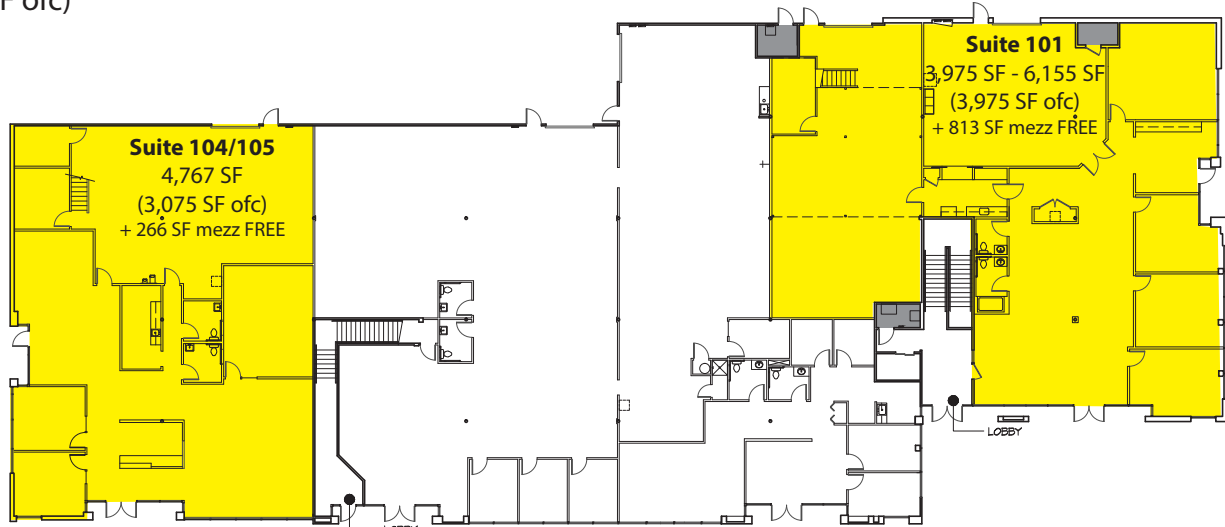
Building 1 - First Floor

Suite 101

3,975 SF-6,155 SF (3,975 SF ofc)

Suite 104/105

4,767 SF (3,075 SF ofc)



Building 2

24,705 SF Full Building

Suite 100

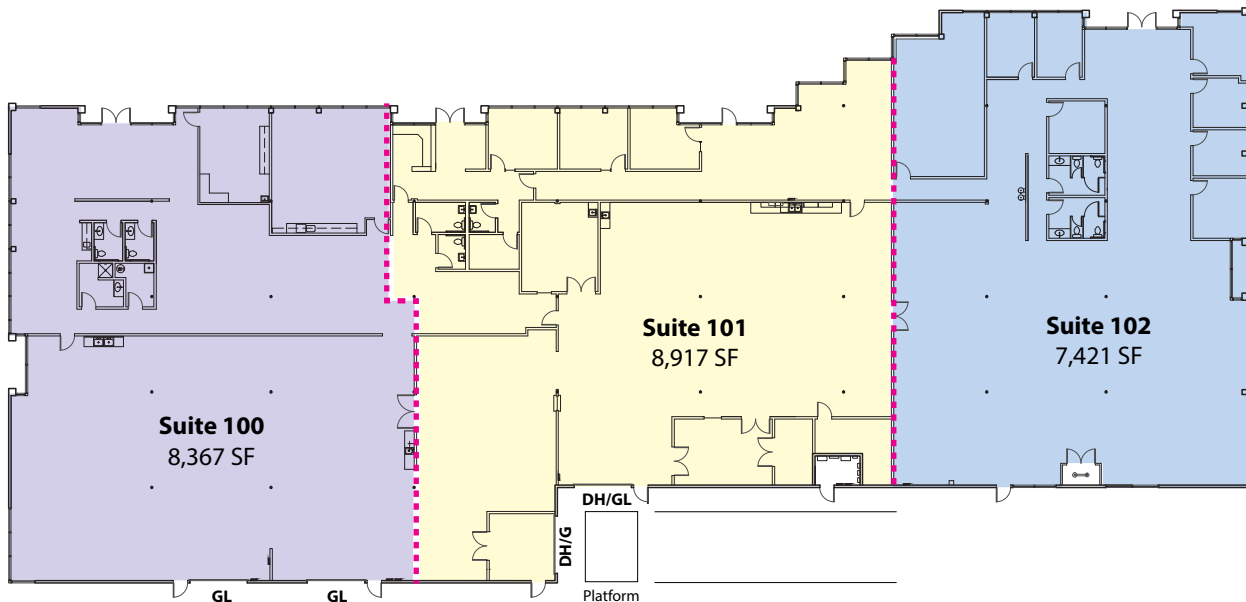
8,367 SF

Suite 101

8,917 SF

Suite 102

7,421 SF



Rosen~Harbottle Commercial Real Estate | P.O. Box 5003 Bellevue, WA 98009-5003
phone: (425) 454-3030 fax: (425) 454-6705 | www.rosenharbottle.com

The information provided has been obtained from sources believed reliable. While we do not doubt its accuracy, we have not verified and make no guarantee, warranty or representation about it. It is your sole responsibility to independently confirm its accuracy and completeness.



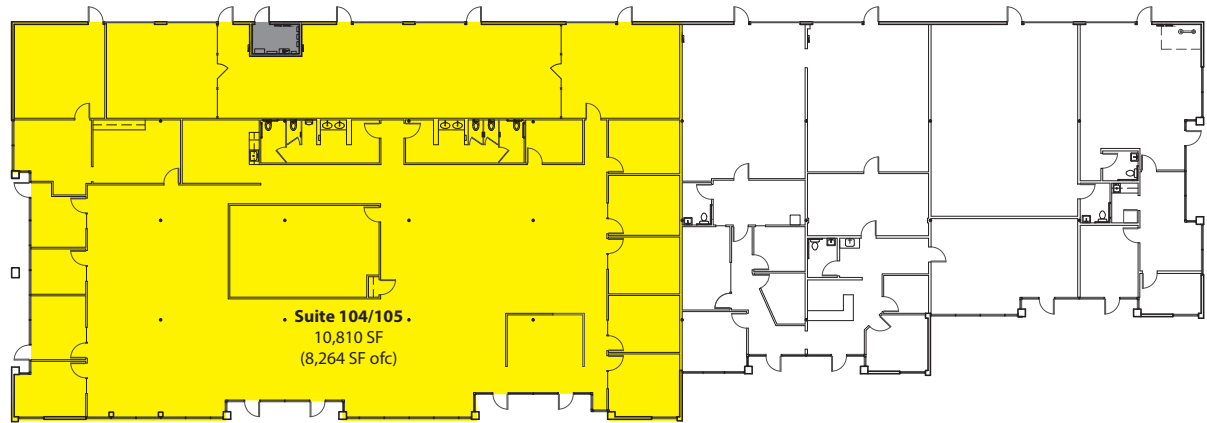
RH North Creek Business Center

11810-11824 North Creek Parkway N, Bothell, WA 98011

Building 3

Suite 104/105

10,810 SF (8,264 SF ofc)



Building 4

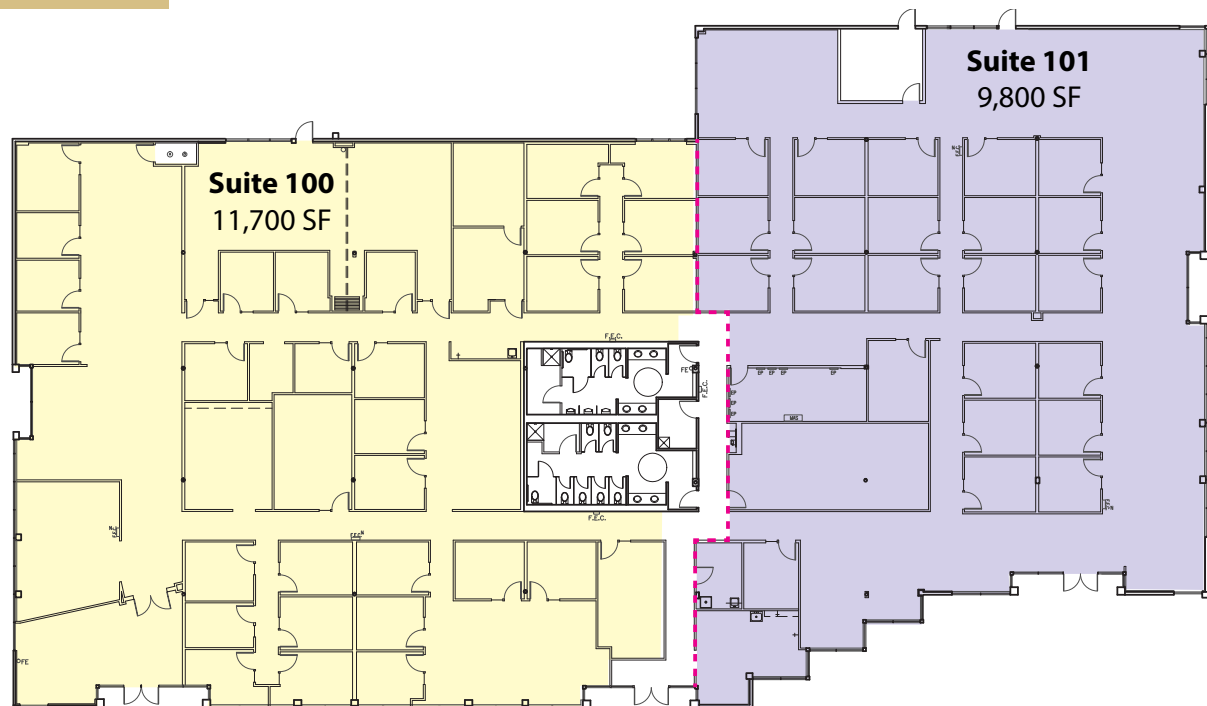
21,500 SF Full Building

Suite 100

11,700 SF

Suite 101

9,800 SF



Rosen~Harbottle Commercial Real Estate | P.O. Box 5003 Bellevue, WA 98009-5003
phone: (425) 454-3030 fax: (425) 454-6705 | www.rosenharbottle.com

The information provided has been obtained from sources believed reliable. While we do not doubt its accuracy, we have not verified and make no guarantee, warranty or representation about it. It is your sole responsibility to independently confirm its accuracy and completeness.

RH North Creek Business Center

11810-11824 North Creek Parkway N, Bothell, WA 98011



**RH North Creek
Business Center**

Corporate Neighbors

- | | | |
|----------------------------|-------------------------------|------------------------|
| 1. AT&T | 6. AT&T | 11. Talentwise |
| 2. General Dynamics | 7. United Healthcare Services | 12. Tetra Tech |
| 3. Valeant Pharmaceuticals | 8. Progressive, Banner Bank | 13. T-Mobile |
| 4. AMEC | 9. Vertafore | 14. Puget Sound Energy |
| 5. Google | 10. State Farm | 15. HUB International |

Rosen~Harbottle Commercial Real Estate | P.O. Box 5003 Bellevue, WA 98009-5003
phone: (425) 454-3030 fax: (425) 454-6705 | www.rosenharbottle.com

The information provided has been obtained from sources believed reliable. While we do not doubt its accuracy, we have not verified and make no guarantee, warranty or representation about it. It is your sole responsibility to independently confirm its accuracy and completeness.

