

STEVENS HEALTH CENTER

21701 76th Avenue W, Edmonds WA 98026



For more information, contact:

ROSEN~HARBOTTLE
COMMERCIAL REAL ESTATE

Grant Rubenstein
(425) 289-2220
grant@rosenharbottle.com

www.rosenharbottle.com

MEDICAL OFFICE SPACE

1,220 SF & 1,604 SF AVAILABLE

\$23.50 / SF, NNN

BUILDING FEATURES:

- Beautifully Renovated Medical Suites
- On Swedish-Edmonds Hospital Campus
- Medical Improvements In Place
- 5.0 / 1,000 SF Parking Ratio
- Common Lobby for Tenant Use
- Corner Suites

Rosen-Harbottle Commercial Real Estate | P.O. Box 5003 Bellevue, WA 98009-5003
phone: (425) 454-3030 fax: (425) 454-6705 | www.rosenharbottle.com

The information provided has been obtained from sources believed reliable. While we do not doubt its accuracy, we have not verified and make no guarantee, warranty or representation about it. It is your sole responsibility to independently confirm its accuracy and completeness.

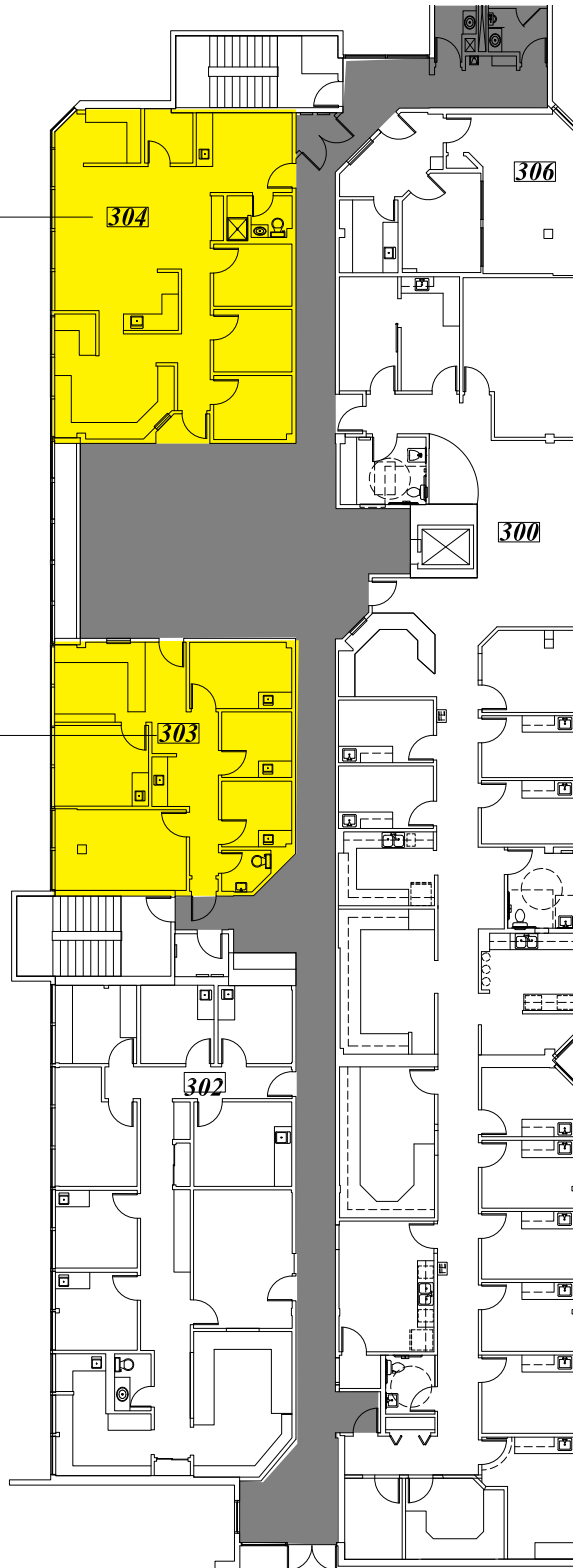
STEVENS HEALTH CENTER

21701 76th Avenue W, Edmonds WA 98026

Third Floor

Suite 304
1,604 SF
Available
30 Days

Suite 303
1,220 SF
Available
11/1/2015



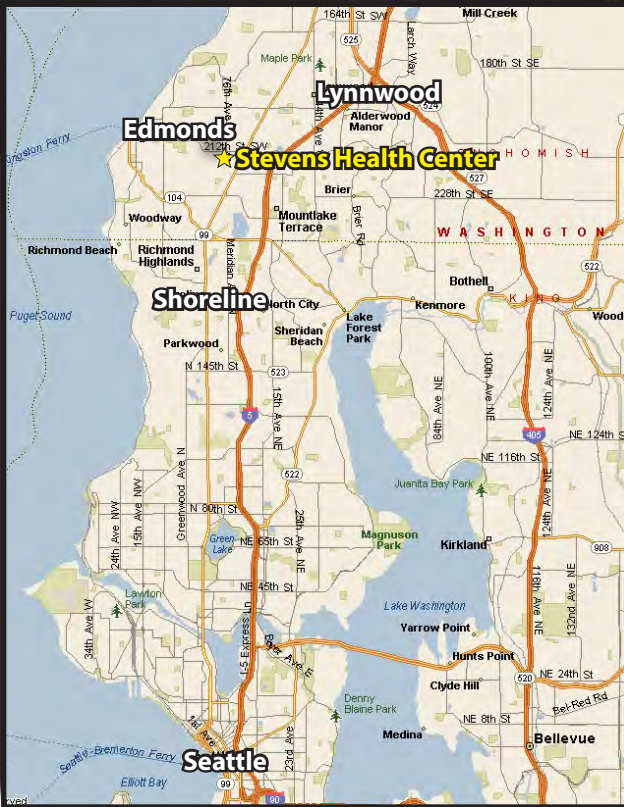
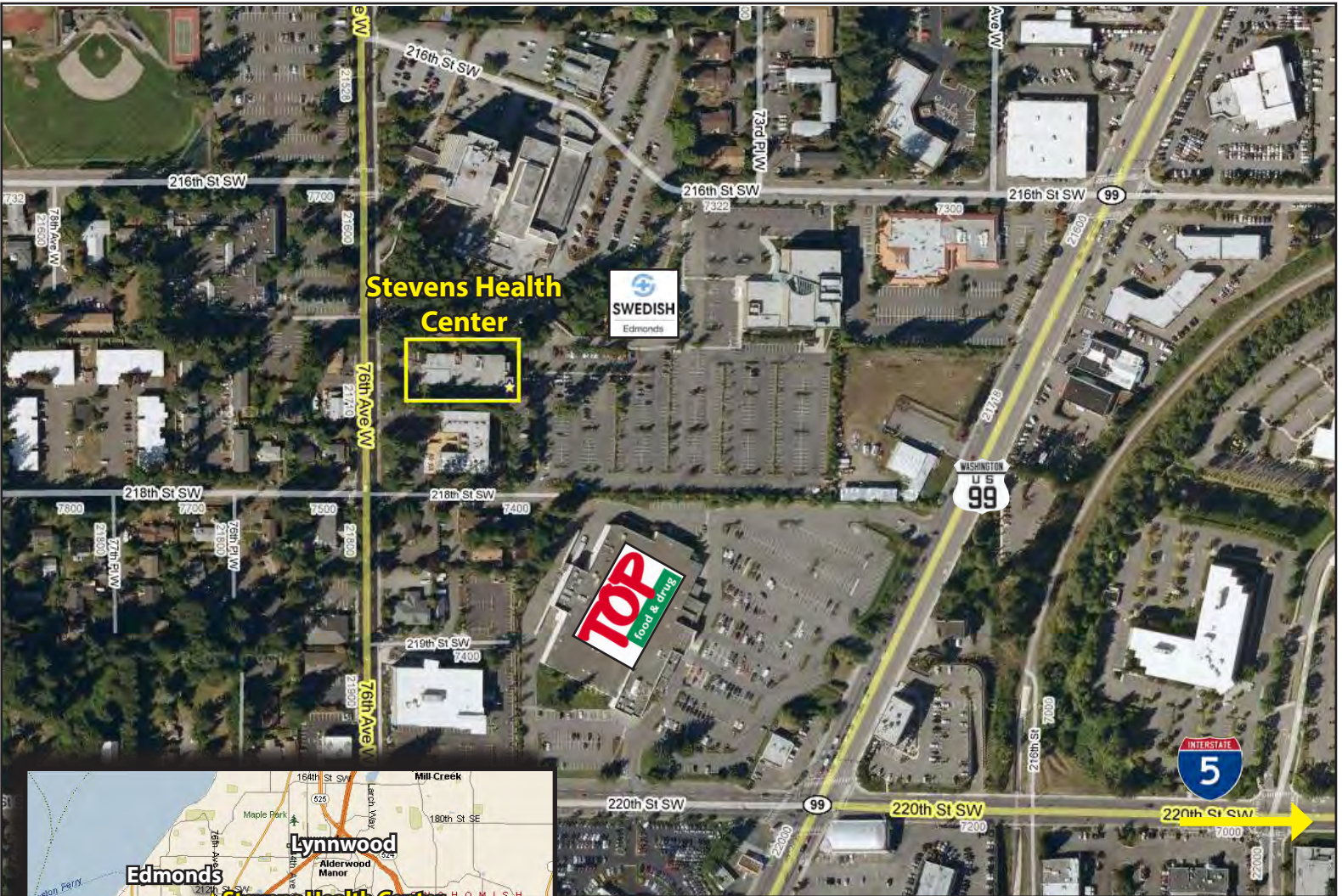
Rosen-Harbottle Commercial Real Estate | P.O. Box 5003 Bellevue, WA 98009-5003
phone: (425) 454-3030 fax: (425) 454-6705 | www.rosenharbottle.com

The information provided has been obtained from sources believed reliable. While we do not doubt its accuracy, we have not verified and make no guarantee, warranty or representation about it. It is your sole responsibility to independently confirm its accuracy and completeness.



STEVENS HEALTH CENTER

21701 76th Avenue W, Edmonds WA 98026



Rosen | Harbottle
Commercial Real Estate

P.O. Box 5003, Bellevue, WA 98009-5003
(425) 454-3030 Phone (425) 454-6705 Fax
www.rosenharbottle.com

Rosen-Harbottle Commercial Real Estate | P.O. Box 5003 Bellevue, WA 98009-5003
phone: (425) 454-3030 fax: (425) 454-6705 | www.rosenharbottle.com

The information provided has been obtained from sources believed reliable. While we do not doubt its accuracy, we have not verified and make no guarantee, warranty or representation about it. It is your sole responsibility to independently confirm its accuracy and completeness.