

CREATIVE OFFICE SPACE BY ALDERWOOD MALL

LYNNWOOD BUSINESS CENTER

19231 36th Avenue W, Lynnwood, WA 98036



1,645 SF Available

Suite	Total SF	Rent/ Month	Date Avail
B-201	1,645 SF	\$2,742	Now

FEATURES:

- Quick Access to I-5, I-405 & Hwy 99
- Building Signage
- Floor to Ceiling Windows - Great Natural Light
- Near Convention Center & Alderwood Mall Amenities
- Comcast & Frontier High-Speed Internet Available



For more information, contact:

ROSEN~HARBOTTLE
COMMERCIAL REAL ESTATE

Caleb Farnworth, CCIM
(425) 289-2235
calebf@rosenharbottle.com

www.rosenharbottle.com

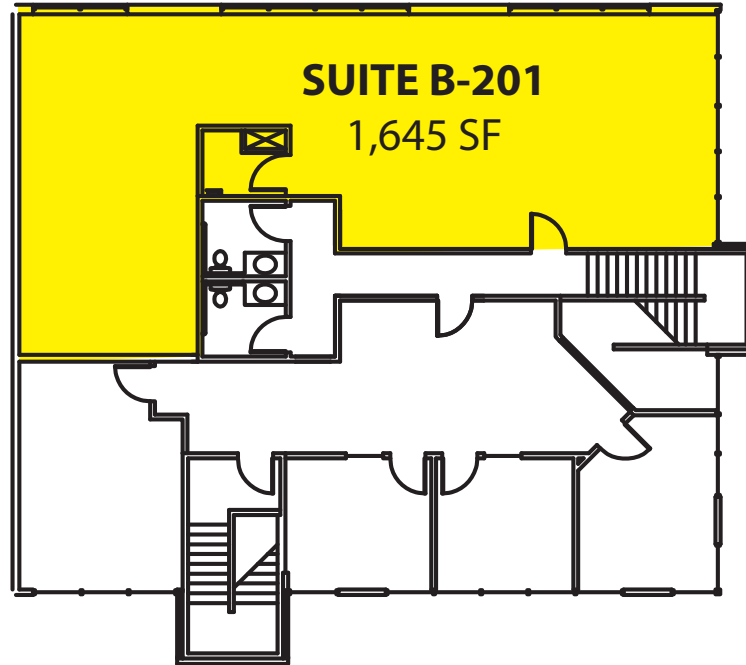
Rosen-Harbottle Commercial Real Estate | P.O. Box 5003 Bellevue, WA 98009-5003
phone: (425) 454-3030 fax: (425) 454-6705 | www.rosenharbottle.com

The information provided has been obtained from sources believed reliable. While we do not doubt its accuracy, we have not verified and make no guarantee, warranty or representation about it. It is your sole responsibility to independently confirm its accuracy and completeness.

LYNNWOOD BUSINESS CENTER

19231 36th Avenue W, Lynnwood, WA 98036

Second Floor - Office Space

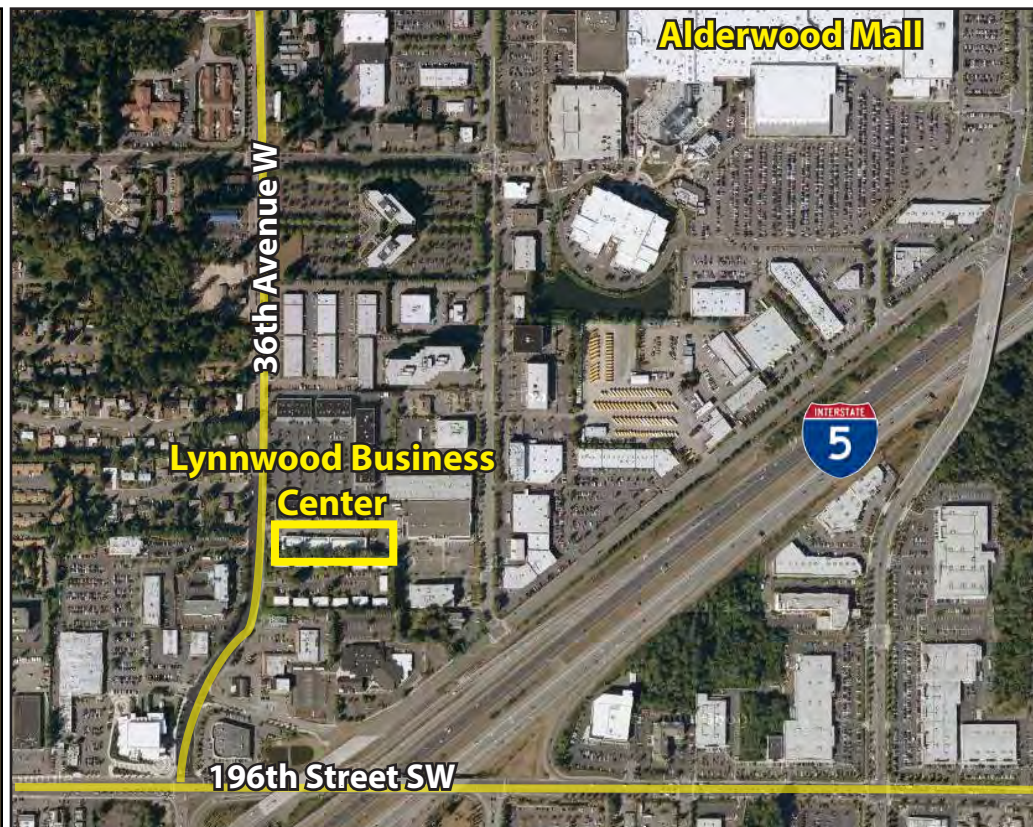


For more information, contact:

**Rosen-Harbottle
Commercial Real Estate**

Caleb Farnworth, CCIM
(425) 289-2235
calebf@rosenharbottle.com

www.rosenharbottle.com



Rosen-Harbottle Commercial Real Estate | P.O. Box 5003 Bellevue, WA 98009-5003
phone: (425) 454-3030 fax: (425) 454-6705 | www.rosenharbottle.com

The information provided has been obtained from sources believed reliable. While we do not doubt its accuracy, we have not verified and make no guarantee, warranty or representation about it. It is your sole responsibility to independently confirm its accuracy and completeness.