

OFFICE
LEASE



EASTLAKE BUSINESS PARK, Building A

18336-18398 Redmond-Fall City Road | Redmond, WA 98052

Caleb Farnworth, CCIM

425.289.2235

calebf@rosenharbottle.com

425.454.3030
rosenharbottle.com

PO Box 5003
Bellevue, WA 98009 - 5003



OFFICE SPACE WITH VIEW OF MARYMOOR PARK AND LAKE SAMMAMISH

2,733 SF Available

\$24.50/SF, NNN

PROPERTY DETAILS:

- Professional, Business Park Setting
- Parking Ratio: 3.5 Stall/1,000 SF
- Quick Access to SR-520, Union Hill, Bear Creek Village, & Downtown Redmond
- Nearby Amenities Include Home Depot, Whole Foods, Chipotle, Target, Mercury's Coffee, Costco & More
- Located Minutes From Future Light Rail Stations

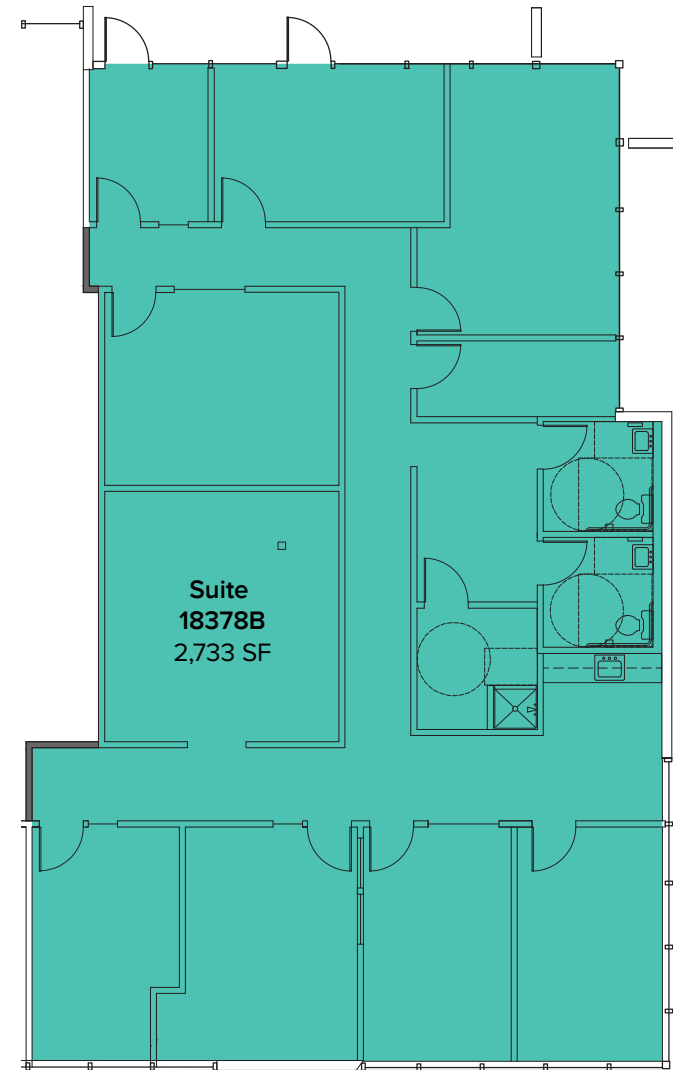


The information provided herein has been obtained from sources believed to be reliable, but no representation or warranty, express or implied, is made with respect to the accuracy or completeness of any such information. Each prospective buyer or tenant should independently investigate, evaluate and verify all information provided herein and any other matters deemed material. Please consult your attorney, tax advisor or other professional advisor. The terms of sale or lease set forth herein are subject to change or withdrawal at any time and without notice.

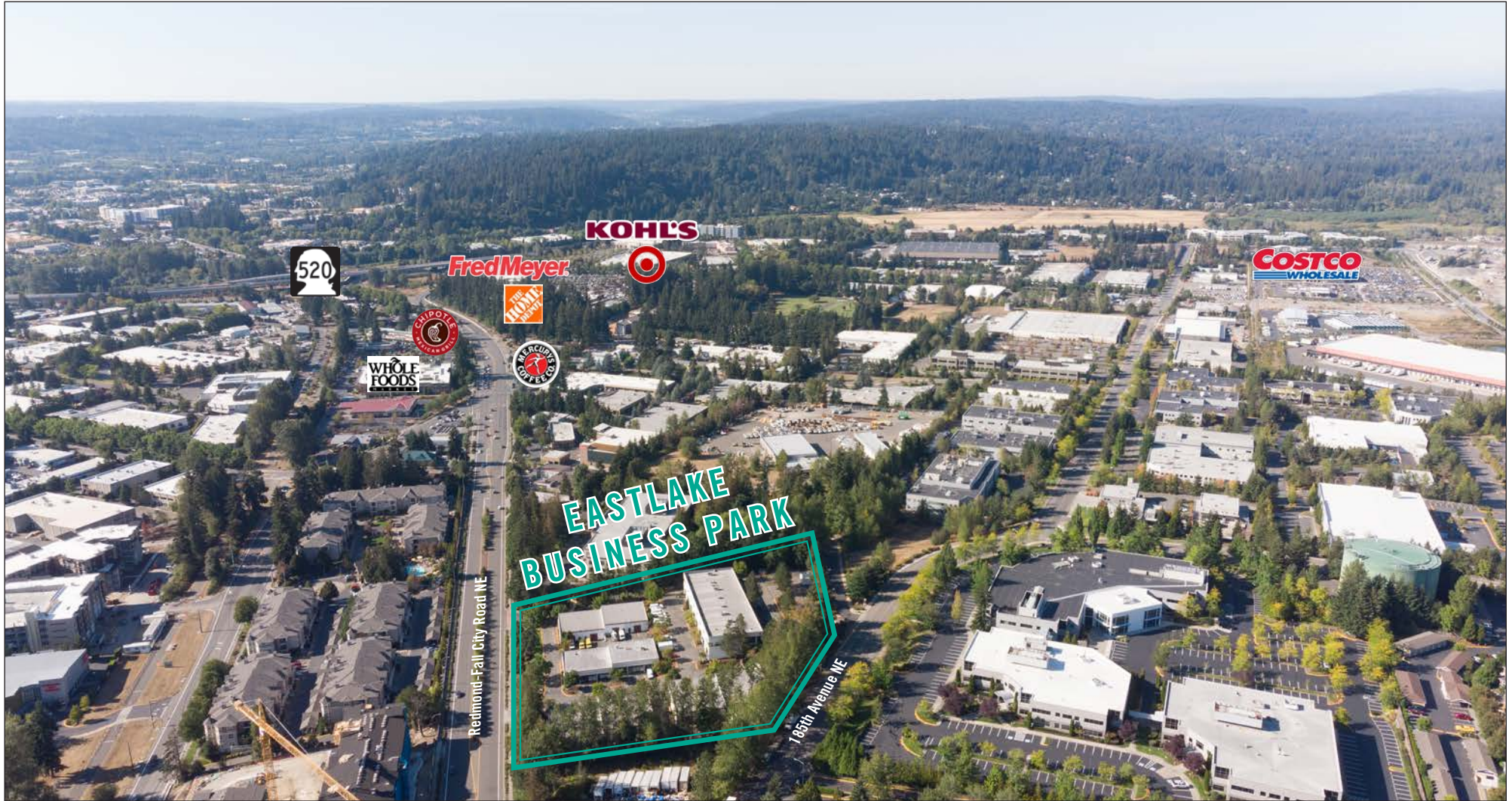
SUITE 18378B FLOOR PLAN

SUITE FEATURES

- **Available Now**
- **2,733 SF**
- **\$24.50/SF, NNN**
- Second Floor, End Cap Office
- 5 Private Offices
- 1 Conference Room
- 2 Restrooms
- Reception Area
- Break Room
- Storage Room
- Includes desirable window line providing natural light and a view of the Olympic Mountains



LOCATION MAP



LOCATION MAP



The information provided herein has been obtained from sources believed to be reliable, but no representation or warranty, express or implied, is made with respect to the accuracy or completeness of any such information. Each prospective buyer or tenant should independently investigate, evaluate and verify all information provided herein and any other matters deemed material. Please consult your attorney, tax advisor or other professional advisor. The terms of sale or lease set forth herein are subject to change or withdrawal at any time and without notice.