

NEW REDUCED RATE  
**\$0.55/SF, NNN**



# MILITARY ROAD S BUILDING

8300 Military Road S | Seattle, WA

**Jack Rosen**

425.289.2221

jack@rosenharbottle.com

**Connor Feuerberg**

425.279.7943

connor@rosenharbottle.com

425.454.3030  
rosenharbottle.com

PO Box 5003  
Bellevue, WA 98009 - 5003





**ONE OF THE LOWEST RATES  
IN SOUTH SEATTLE:  
\$0.55/SF, NNN**

**OFFICE/WAREHOUSE/FLEX SPACE  
4,708 SF - 8,778 SF Available**



### FEATURES:

- Air Conditioning Throughout
- Visibility to I-5
- 3-Phase Power
- Grade-Level Loading
- Good Parking
- Storage Available



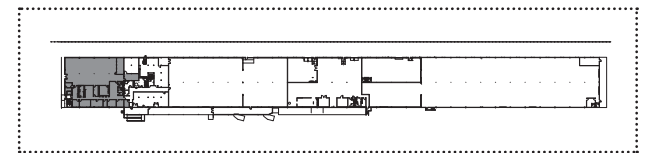
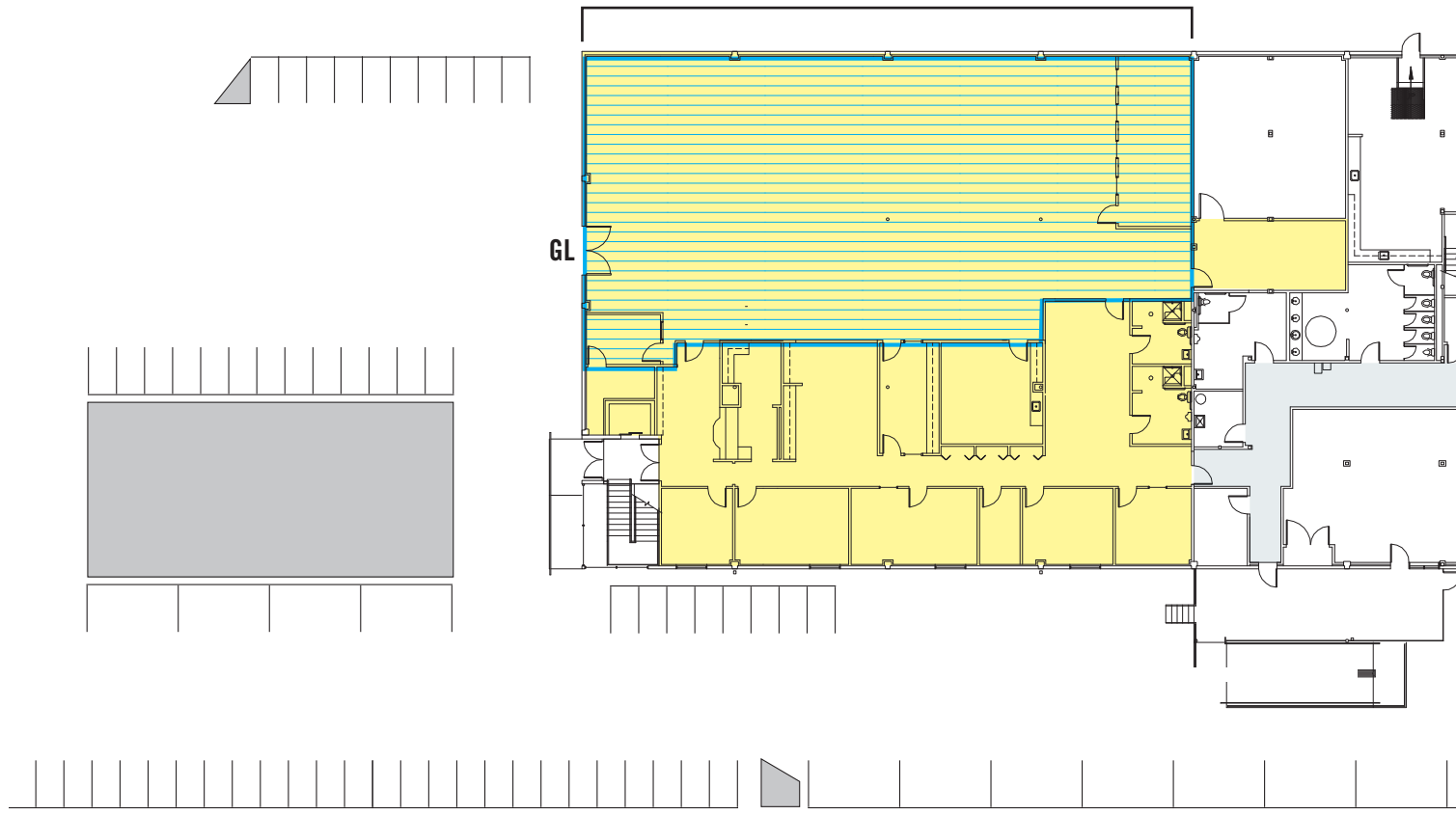
### IDEAL USES

- Server Farm
- Tech Startups
- Data Center
- Light Industrial

# SITE PLAN

**SUITE 150** - 8,778 SF Office Available

 4,708 SF Warehouse



# LOCATION MAP



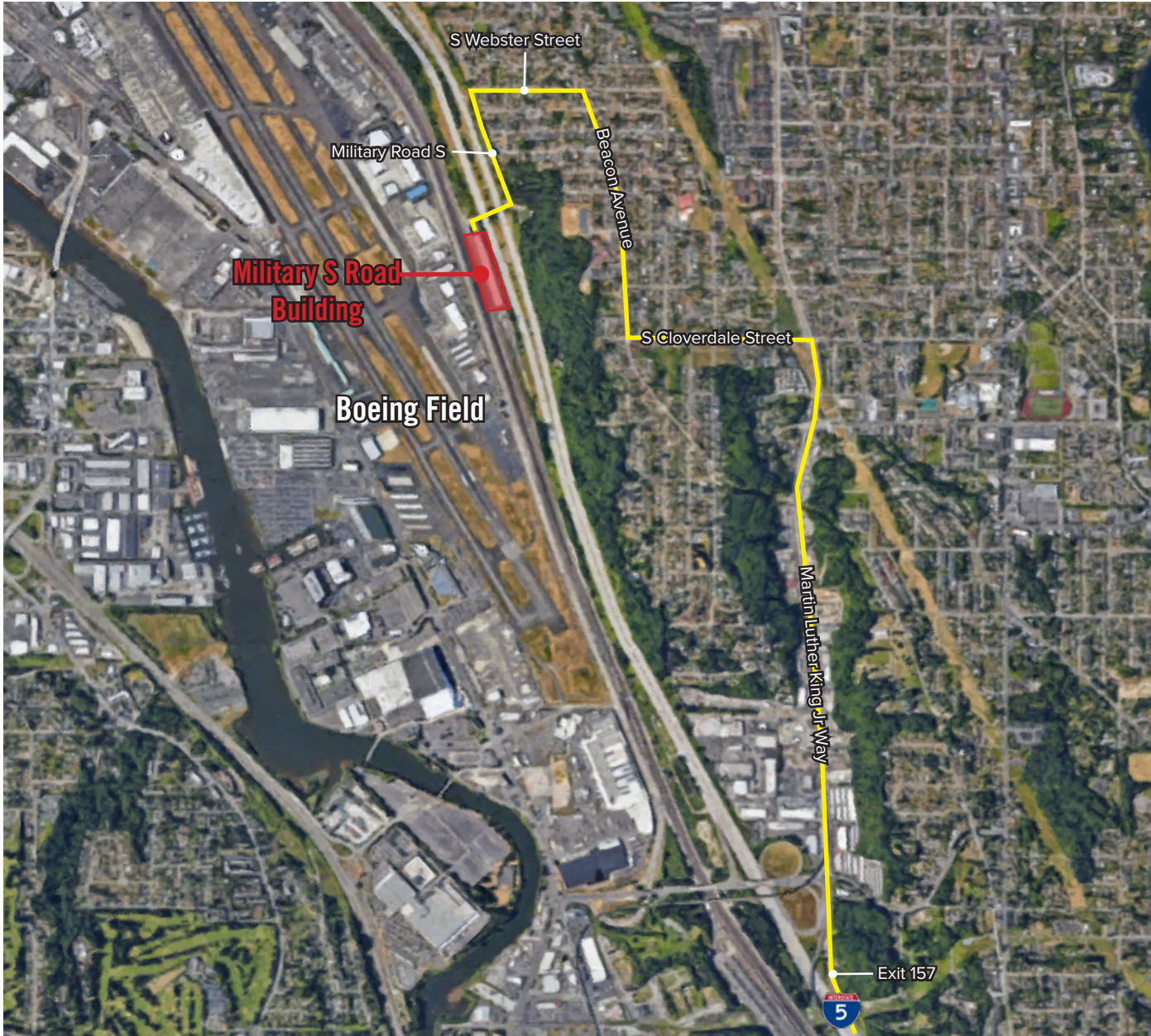
# LOCATION MAP



## DIRECTION FROM I-5 NORTH

- Take exit 161 for Albro Place toward Swift Ave
- Left on S Albro Place
- Right on Swift Ave S
- Continue onto S Myrtle Street
- Right onto Beacon Ave S
- Right onto Webster St
- Continue onto 29th Ave S
- Continue onto Military Road S
- Military Road S Building is located on the Left

# LOCATION MAP



## DIRECTION FROM I-5 SOUTH

- Take exit 157 for Martin Luther King Jr Way S
- Left onto S Cloverdale Street
- Right onto Beacon Avenue S
- Left onto S Webster Road
- Continue onto Military Road S
- Continue onto S Rose Street
- Military Road S Building is located on the Left