

# RH North Creek Business Center

11810-11824 North Creek Parkway N, Bothell, WA 98011



Building 2



Building 3



Building 1

## CLASS A CORPORATE IMAGE

### 2,022 SF - 46,096 SF Available

#### FEATURES:

- Office, Tech/Assembly & Flex Space Available
- Buildings 2 & 4 Contiguous for 46,096 SF Total
- Building Signage Available
- Prestigious North Creek Location
- Nearby Amenities: NEW McMenamins Anderson School, Restaurants, Retail, Childcare, Hotel, Sports Fields, Jogging & Parcourse Trails
- Quick Access to I-405, SR-522 & Downtown Bothell
- Corporate Neighbors Include Google, AT&T, T-Mobile & Puget Sound Energy



For more information, contact:

ROSEN~HARBOTTLE  
COMMERCIAL REAL ESTATE

**Brian Stewart**

(425) 289-2222

brians@rosenharbottle.com

**Caleb Farnworth, CCIM**

(425) 289-2235

calebf@rosenharbottle.com

www.rosenharbottle.com

Rosen~Harbottle Commercial Real Estate | P.O. Box 5003 Bellevue, WA 98009-5003  
phone: (425) 454-3030 fax: (425) 454-6705 | www.rosenharbottle.com

The information provided has been obtained from sources believed reliable. While we do not doubt its accuracy, we have not verified and make no guarantee, warranty or representation about it. It is your sole responsibility to independently confirm its accuracy and completeness.

# RH North Creek Business Center

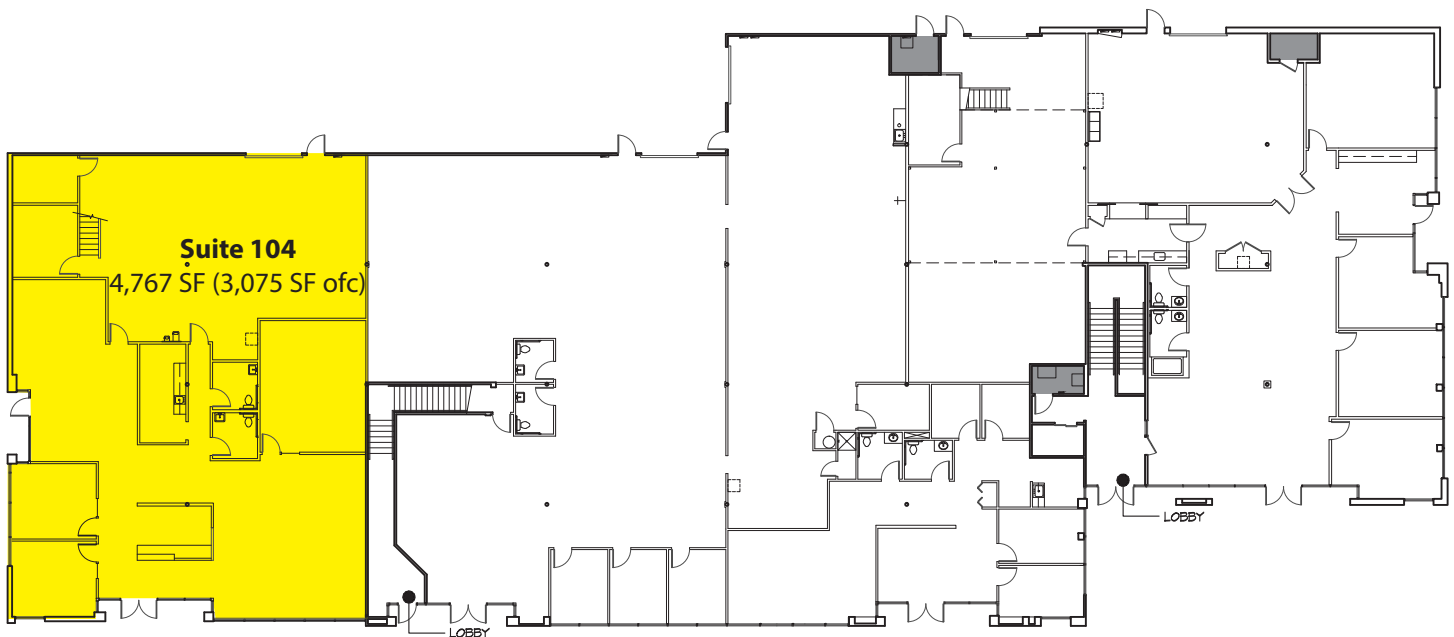
11810-11824 North Creek Parkway N, Bothell, WA 98011

Bldg-Suite	Square Feet	Available
1-104	4,767 SF (3,075 SF ofc)	5/1/2017
Office/warehouse space with GL loading and signage on North Creek Pkwy.		
1-202	2,157 SF	1/1/2017
2nd floor office with 7 POs on window line, kitchenette and reception.		
2-100	~6,000 SF - 24,596 SF	Now
Tech/assembly: HVAC throughout & versatile loading. Contiguous with Bldg 4 for 46,096 SF total.		
4-100	9,800 SF - 21,500 SF	Now
Full building available; office build out. Contiguous with Bldg 2 for 46,096 SF total.		
6-109	2,022 SF (918 SF ofc)	Now
Open office, insulated warehouse with HVAC and improved lighting throughout, 1 RR + shower.		

## Building 1

### Suite 104

4,767 SF (3,075 SF ofc)



Rosen~Harbottle Commercial Real Estate | P.O. Box 5003 Bellevue, WA 98009-5003  
phone: (425) 454-3030 fax: (425) 454-6705 | [www.rosenharbottle.com](http://www.rosenharbottle.com)

The information provided has been obtained from sources believed reliable. While we do not doubt its accuracy, we have not verified and make no guarantee, warranty or representation about it. It is your sole responsibility to independently confirm its accuracy and completeness.



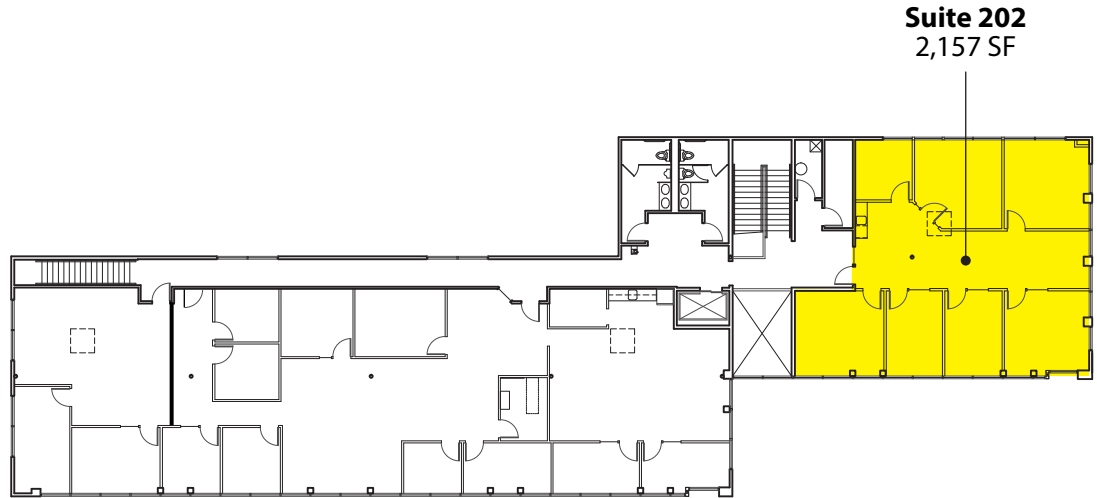
# RH North Creek Business Center

11810-11824 North Creek Parkway N, Bothell, WA 98011

## Building 1

### Suite 202

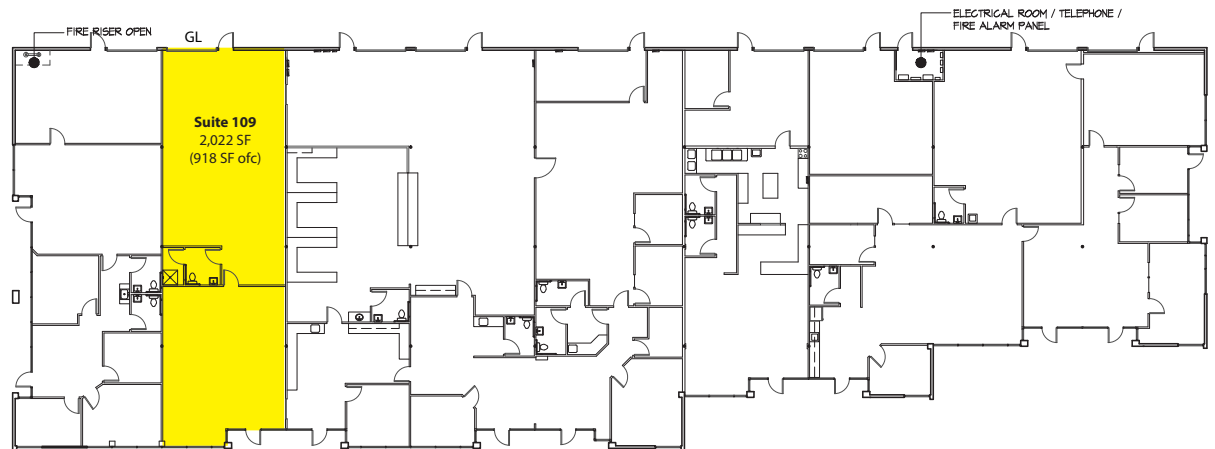
2,157 SF



## Building 6

### Suite 109

2,022 SF (918 SF ofc)



Rosen~Harbottle Commercial Real Estate | P.O. Box 5003 Bellevue, WA 98009-5003  
phone: (425) 454-3030 fax: (425) 454-6705 | [www.rosenharbottle.com](http://www.rosenharbottle.com)

The information provided has been obtained from sources believed reliable. While we do not doubt its accuracy, we have not verified and make no guarantee, warranty or representation about it. It is your sole responsibility to independently confirm its accuracy and completeness.

# RH North Creek Business Center

11810-11824 North Creek Parkway N, Bothell, WA 98011

**BUILDINGS 2 AND 4 CAN BE LEASED TOGETHER FOR 46,096 SF TOTAL**

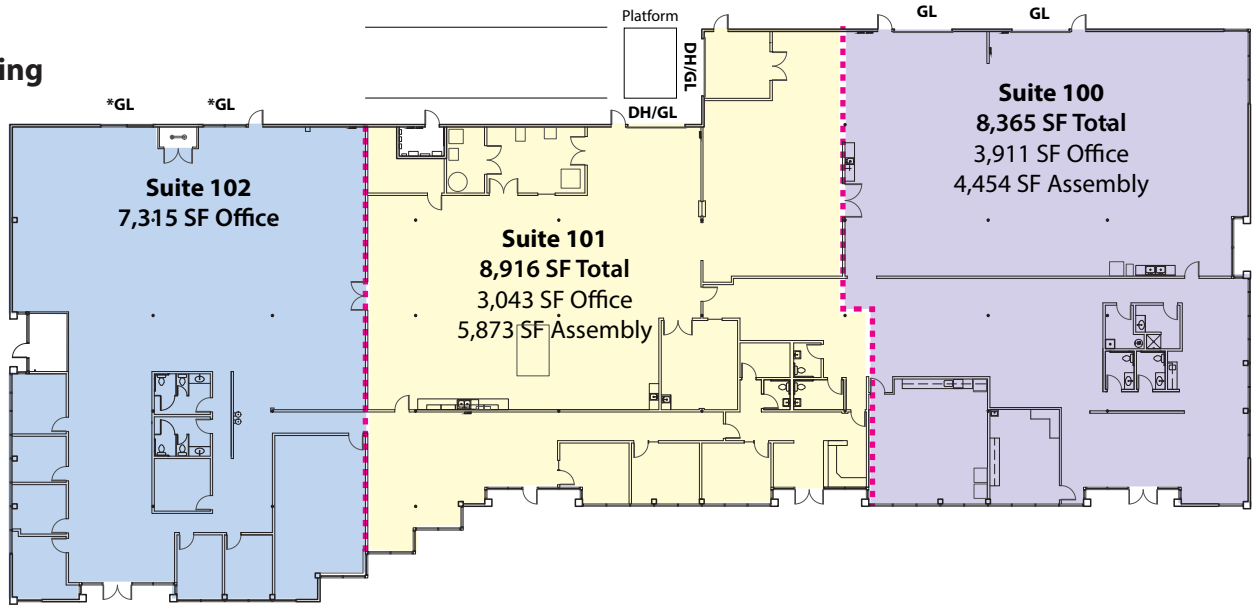
## Building 2

**24,596 SF Full Building**

**Suite 100**  
8,365 SF

**Suite 101**  
8,916 SF

**Suite 102**  
7,315 SF



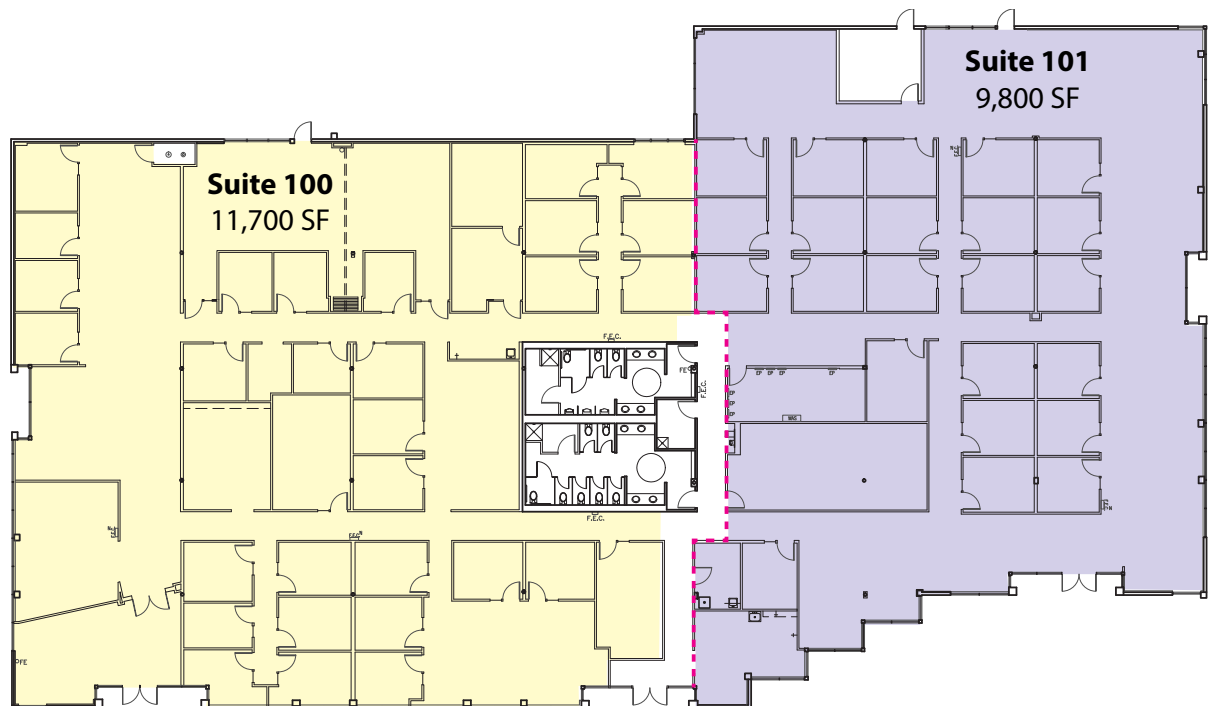
Floor plan is a sample only. Space can be demised to ~6,000 SF

## Building 4

**21,500 SF Full Building**

**Suite 100**  
11,700 SF

**Suite 101**  
9,800 SF



Rosen~Harbottle Commercial Real Estate | P.O. Box 5003 Bellevue, WA 98009-5003  
phone: (425) 454-3030 fax: (425) 454-6705 | [www.rosenharbottle.com](http://www.rosenharbottle.com)

The information provided has been obtained from sources believed reliable. While we do not doubt its accuracy, we have not verified and make no guarantee, warranty or representation about it. It is your sole responsibility to independently confirm its accuracy and completeness.





# RH North Creek Business Center

11810-11824 North Creek Parkway N, Bothell, WA 98011



**RH North Creek  
Business Center**

## Corporate Neighbors

- |                            |                               |                        |
|----------------------------|-------------------------------|------------------------|
| 1. AT&T                    | 6. AT&T                       | 11. Talentwise         |
| 2. General Dynamics        | 7. United Healthcare Services | 12. Tetra Tech         |
| 3. Valeant Pharmaceuticals | 8. Progressive, Banner Bank   | 13. T-Mobile           |
| 4. AMEC                    | 9. Vertafore                  | 14. Puget Sound Energy |
| 5. Google                  | 10. State Farm                | 15. HUB International  |

Rosen~Harbottle Commercial Real Estate | P.O. Box 5003 Bellevue, WA 98009-5003  
phone: (425) 454-3030 fax: (425) 454-6705 | [www.rosenharbottle.com](http://www.rosenharbottle.com)

The information provided has been obtained from sources believed reliable. While we do not doubt its accuracy, we have not verified and make no guarantee, warranty or representation about it. It is your sole responsibility to independently confirm its accuracy and completeness.