



FOR LEASE

Fountain Plaza I & II

501 & 505 S 336TH ST, FEDERAL WAY, WA



Class A Office Space in West Campus Federal Way

WILL FRAME

253.722.1412

will.frame@kidder.com

MARK CLIREHUGH, SIOR, CCIM

253.722.1416

mark.clirehugh@kidder.com

DREW FRAME

253.722.1433

drew.frame@kidder.com

**Kidder
Mathews**

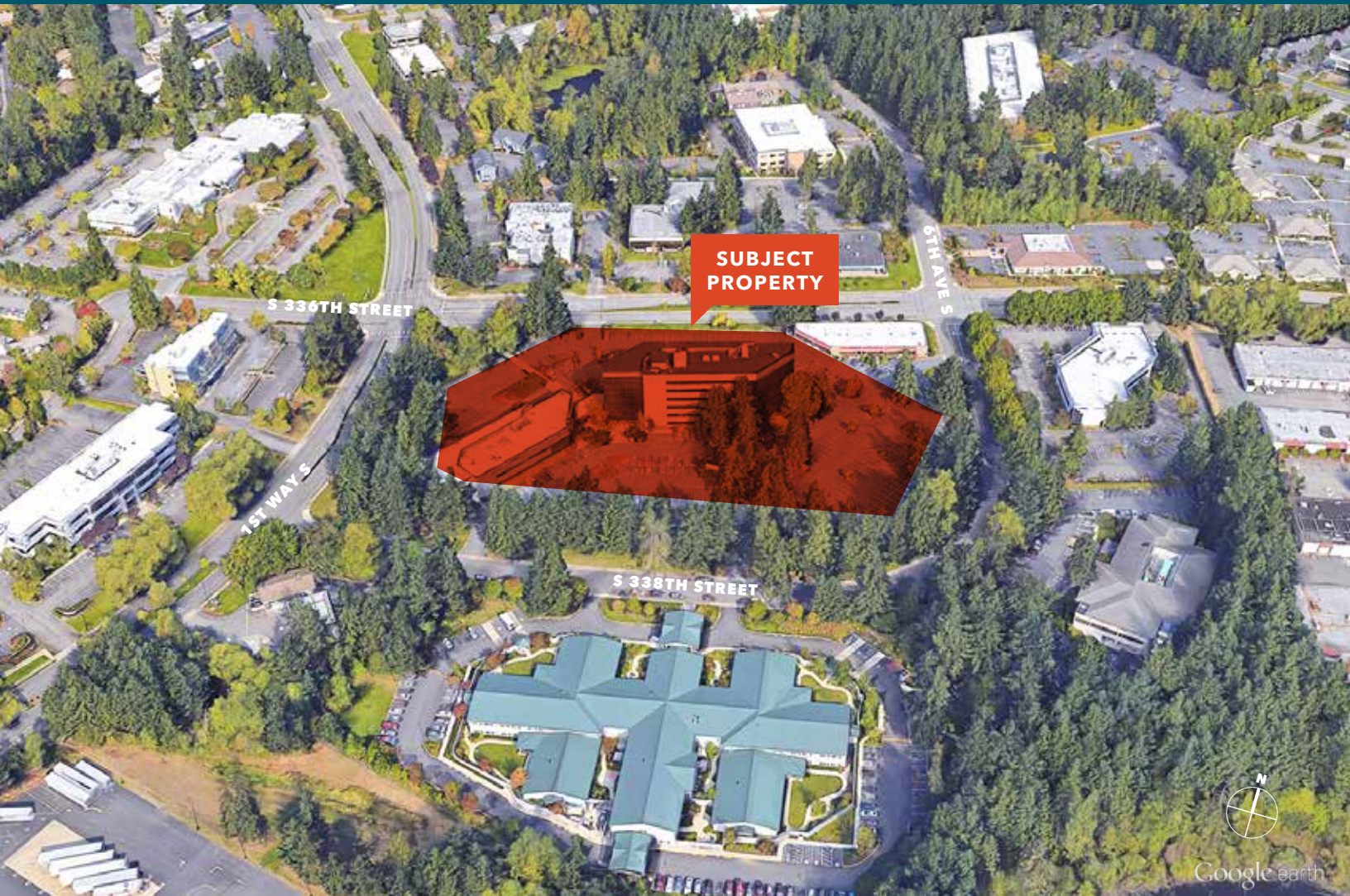
This information supplied herein is from sources we deem reliable. It is provided without any representation, warranty, or guarantee, expressed or implied as to its accuracy. Prospective Buyer or Tenant should conduct an independent investigation and verification of all matters deemed to be material, including, but not limited to, statements of income and expenses. Consult your attorney, accountant, or other professional advisor.

KIDDER.COM

FOR LEASE

Fountain Plaza I & II

501 & 505 S 336TH ST, FEDERAL WAY, WA



Class "A" Office Space

BUILDING I 2,176 - 4,736 SF

BUILDING II 1,149 - 3,856 SF

RATE \$23.50 PSF, per year, full service

PARKING surface parking at 4.7/1,000

RENOVATIONS 2017 renovations of lobby, common area, restrooms and building exterior

LOCATED on the corner of 336th & 1st, the hub of West Campus Office

ACCESS easy access to Hwy 18, Hwy 99 and I-5

WILL FRAME

253.722.1412

will.frame@kidder.com

MARK CLIREHUGH, SIOR, CCIM

253.722.1416

mark.clirehugh@kidder.com

DREW FRAME

253.722.1433

drew.frame@kidder.com

KIDDER.COM

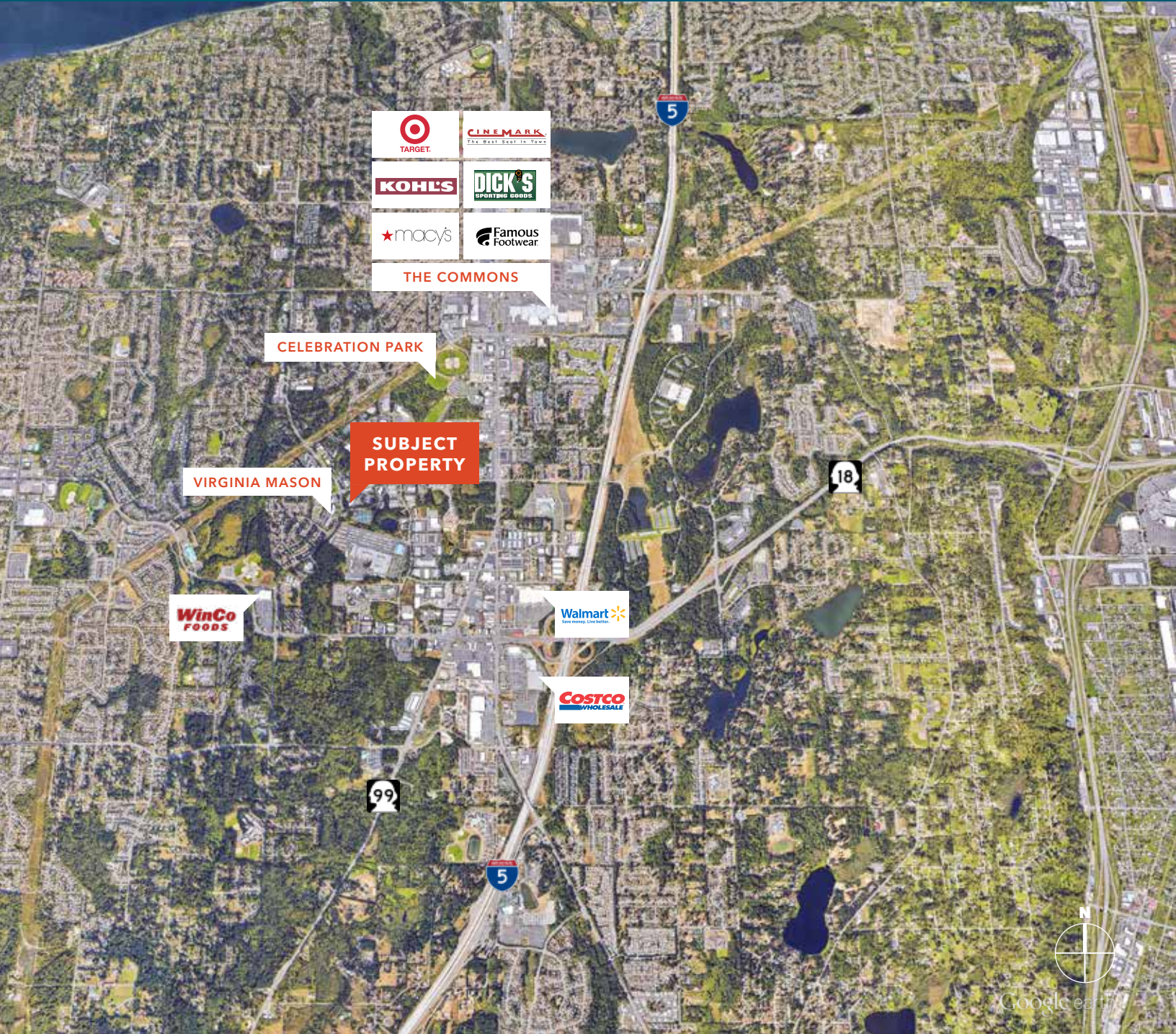
This information supplied herein is from sources we deem reliable. It is provided without any representation, warranty, or guarantee, expressed or implied as to its accuracy. Prospective Buyer or Tenant should conduct an independent investigation and verification of all matters deemed to be material, including, but not limited to, statements of income and expenses. Consult your attorney, accountant, or other professional advisor.

km Kidder Mathews

FOR LEASE

Fountain Plaza I & II

501 & 505 S 336TH ST, FEDERAL WAY, WA



WILL FRAME
253.722.1412
will.frame@kidder.com

MARK CLIREHUGH, SIOR, CCIM
253.722.1416
mark.clirehugh@kidder.com

DREW FRAME
253.722.1433
drew.frame@kidder.com

KIDDER.COM

This information supplied herein is from sources we deem reliable. It is provided without any representation, warranty, or guarantee, expressed or implied as to its accuracy. Prospective Buyer or Tenant should conduct an independent investigation and verification of all matters deemed to be material, including, but not limited to, statements of income and expenses. Consult your attorney, accountant, or other professional advisor.

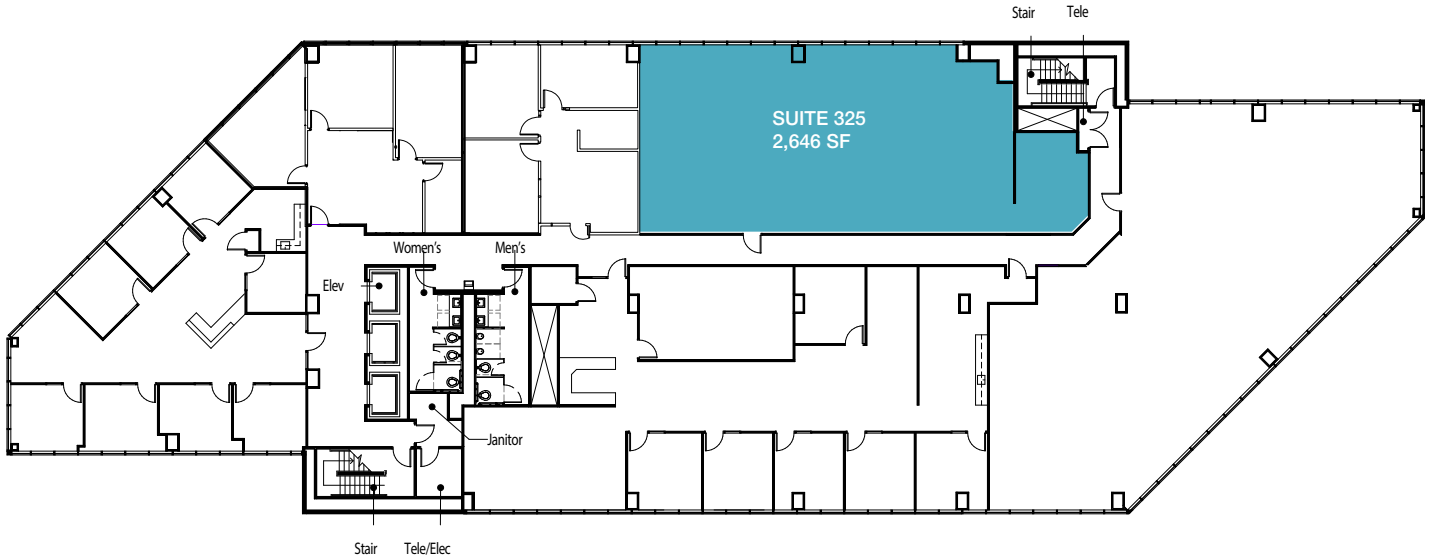


FOR LEASE

Fountain Plaza I & II

501 & 505 S 336TH ST, FEDERAL WAY, WA

Fountain Plaza I - Third Floor



BUILDING I AVAILABLE SPACE

Suite	SF	Features	Available
325	2,646 SF	3rd floor location	NOW
500	4,736 SF	5th floor location	09.2020
610	2,176 SF	6th floor location	NOW

WILL FRAME
253.722.1412
will.frame@kidder.com

MARK CLIREHUGH, SIOR, CCIM
253.722.1416
mark.clirehugh@kidder.com

DREW FRAME
253.722.1433
drew.frame@kidder.com

KIDDER.COM

This information supplied herein is from sources we deem reliable. It is provided without any representation, warranty, or guarantee, expressed or implied as to its accuracy. Prospective Buyer or Tenant should conduct an independent investigation and verification of all matters deemed to be material, including, but not limited to, statements of income and expenses. Consult your attorney, accountant, or other professional advisor.

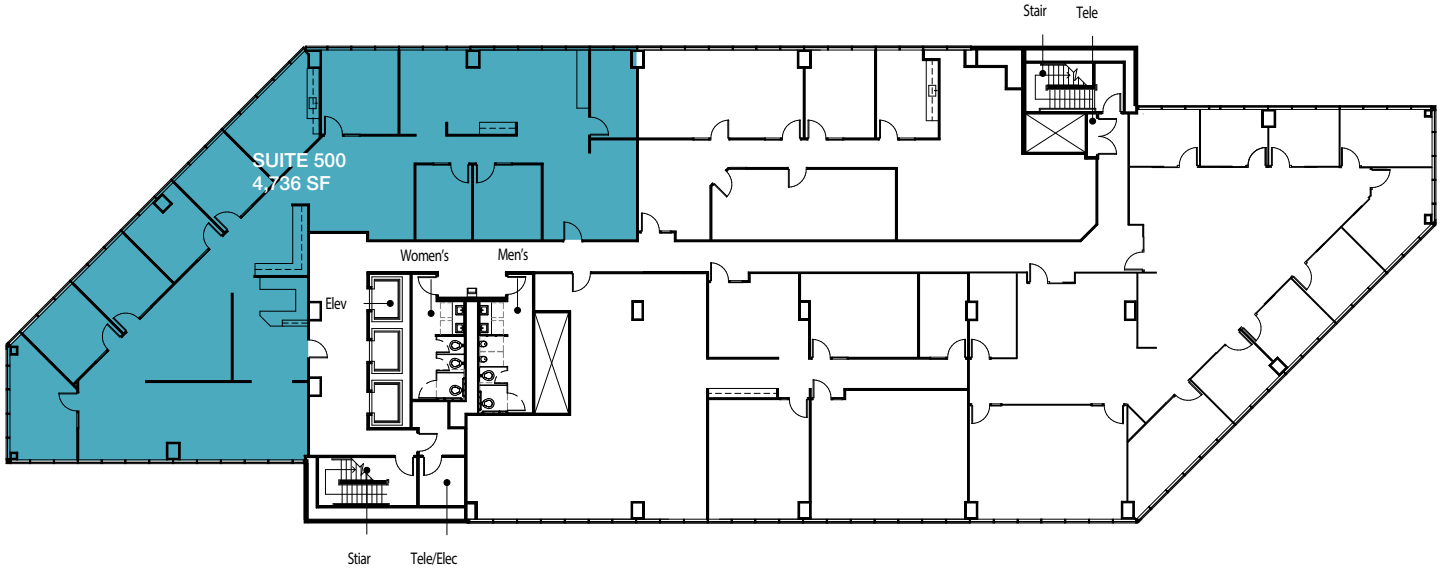


FOR LEASE

Fountain Plaza I & II

501 & 505 S 336TH ST, FEDERAL WAY, WA

Fountain Plaza I - Fifth Floor



BUILDING I AVAILABLE SPACE

Suite	SF	Features	Available
325	2,646 SF	3rd floor location	NOW
500	4,736 SF	5th floor location	09.2020
610	2,176 SF	6th floor location	NOW

WILL FRAME

253.722.1412

will.frame@kidder.com

MARK CLIREHUGH, SIOR, CCIM

253.722.1416

mark.clirehugh@kidder.com

DREW FRAME

253.722.1433

drew.frame@kidder.com

KIDDER.COM

This information supplied herein is from sources we deem reliable. It is provided without any representation, warranty, or guarantee, expressed or implied as to its accuracy. Prospective Buyer or Tenant should conduct an independent investigation and verification of all matters deemed to be material, including, but not limited to, statements of income and expenses. Consult your attorney, accountant, or other professional advisor.

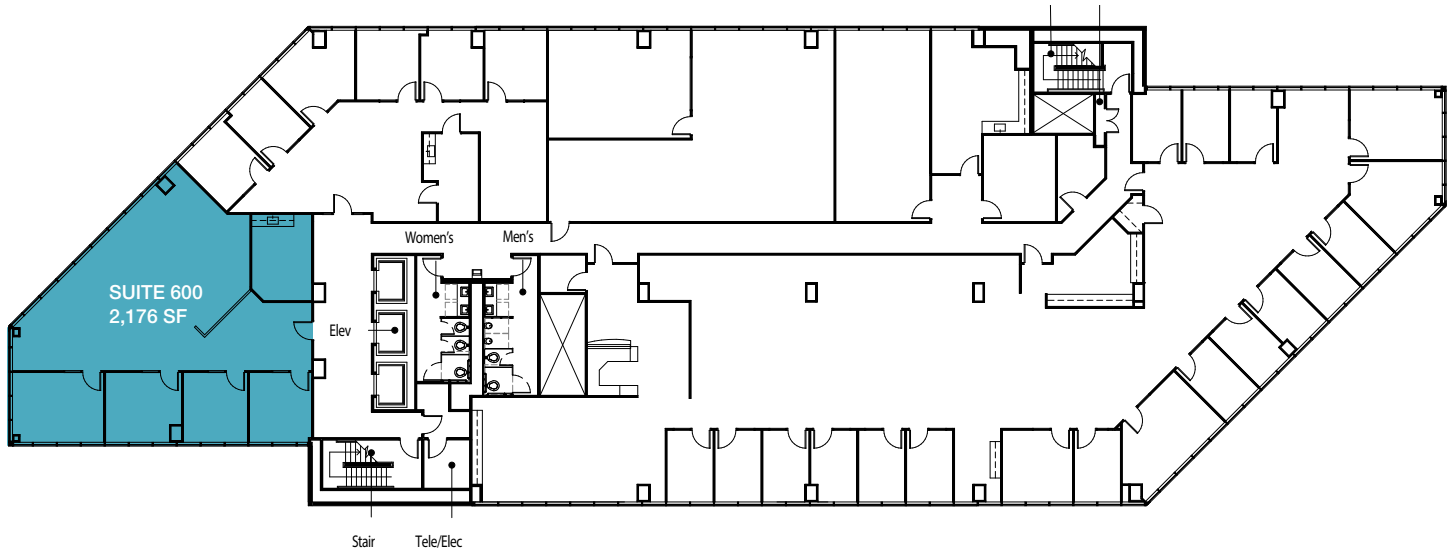


FOR LEASE

Fountain Plaza I & II

501 & 505 S 336TH ST, FEDERAL WAY, WA

Fountain Plaza I - Sixth Floor



BUILDING I AVAILABLE SPACE

Suite	SF	Features	Available
325	2,646 SF	3rd floor location	NOW
500	4,736 SF	5th floor location	09.2020
610	2,176 SF	6th floor location	NOW

WILL FRAME
253.722.1412
will.frame@kidder.com

MARK CLIREHUGH, SIOR, CCIM
253.722.1416
mark.clirehugh@kidder.com

DREW FRAME
253.722.1433
drew.frame@kidder.com

KIDDER.COM

This information supplied herein is from sources we deem reliable. It is provided without any representation, warranty, or guarantee, expressed or implied as to its accuracy. Prospective Buyer or Tenant should conduct an independent investigation and verification of all matters deemed to be material, including, but not limited to, statements of income and expenses. Consult your attorney, accountant, or other professional advisor.

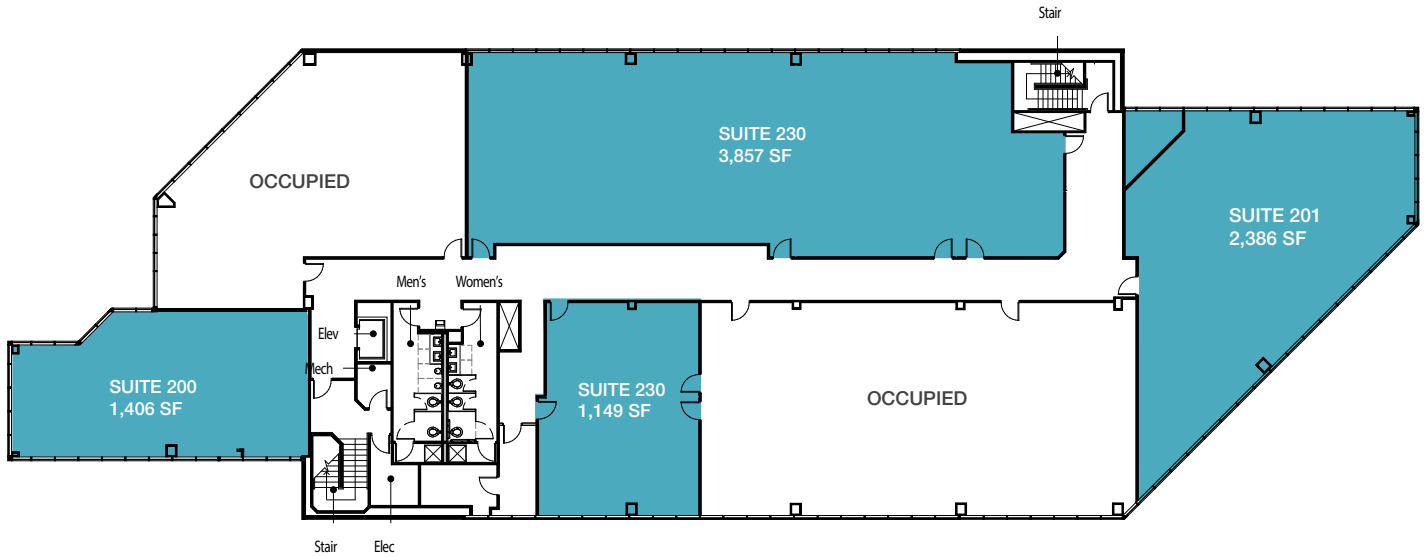


FOR LEASE

Fountain Plaza I & II

501 & 505 S 336TH ST, FEDERAL WAY, WA

Fountain Plaza II - Second Floor



BUILDING II AVAILABLE SPACE

Suite	SF	Features	Available
200	1,406 SF	2nd floor location	NOW
201	2,386 SF	2nd floor location	NOW
203	3,857 SF	2nd floor location	NOW
230	1,149 SF	2nd floor location	NOW

WILL FRAME
253.722.1412
will.frame@kidder.com

MARK CLIREHUGH, SIOR, CCIM
253.722.1416
mark.clirehugh@kidder.com

DREW FRAME
253.722.1433
drew.frame@kidder.com

KIDDER.COM

This information supplied herein is from sources we deem reliable. It is provided without any representation, warranty, or guarantee, expressed or implied as to its accuracy. Prospective Buyer or Tenant should conduct an independent investigation and verification of all matters deemed to be material, including, but not limited to, statements of income and expenses. Consult your attorney, accountant, or other professional advisor.

