

RETAIL/OFFICE
LEASE



ALDERWOOD EAST SHOPPING CENTER

18910 - 18930 28th Ave W | Lynnwood, WA

Jack Rosen

425.289.2221

jack@rosenharbottle.com

425.454.3030
rosenharbottle.com

Grant Rubenstein

425.289.2220

grant@rosenharbottle.com

PO Box 5003
Bellevue, WA 98009 - 5003



HIGH-EXPOSURE OFFICE/ RETAIL SPACE ACROSS FROM ALDERWOOD MALL

823 SF Available

\$40.00/SF, Gross

PROPERTY FEATURES:

- High Exposure Frontage on Alderwood Mall Blvd Near I-5
- Heavy Foot Traffic Location
- 24 Hour Fitness Anchored Center
- Other Tenants Include Daiso, Plato's Closet, Chop It Up Barbershop, & DXL
- 218,969 Cars per Day on I-5
- 21,026+ Cars per Day on 28th Avenue

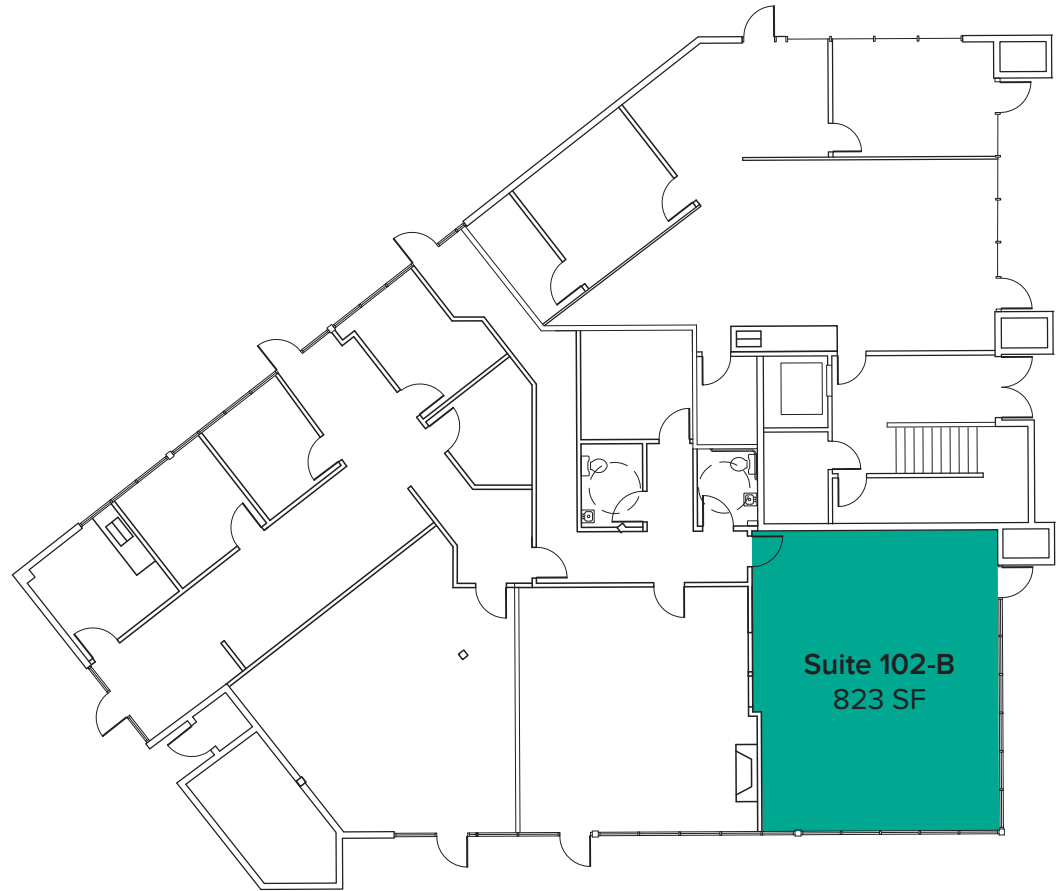


The information provided herein has been obtained from sources believed to be reliable, but no representation or warranty, express or implied, is made with respect to the accuracy or completeness of any such information. Each prospective buyer or tenant should independently investigate, evaluate and verify all information provided herein and any other matters deemed material. Please consult your attorney, tax advisor or other professional advisor. The terms of sale or lease set forth herein are subject to change or withdrawal at any time and without notice.

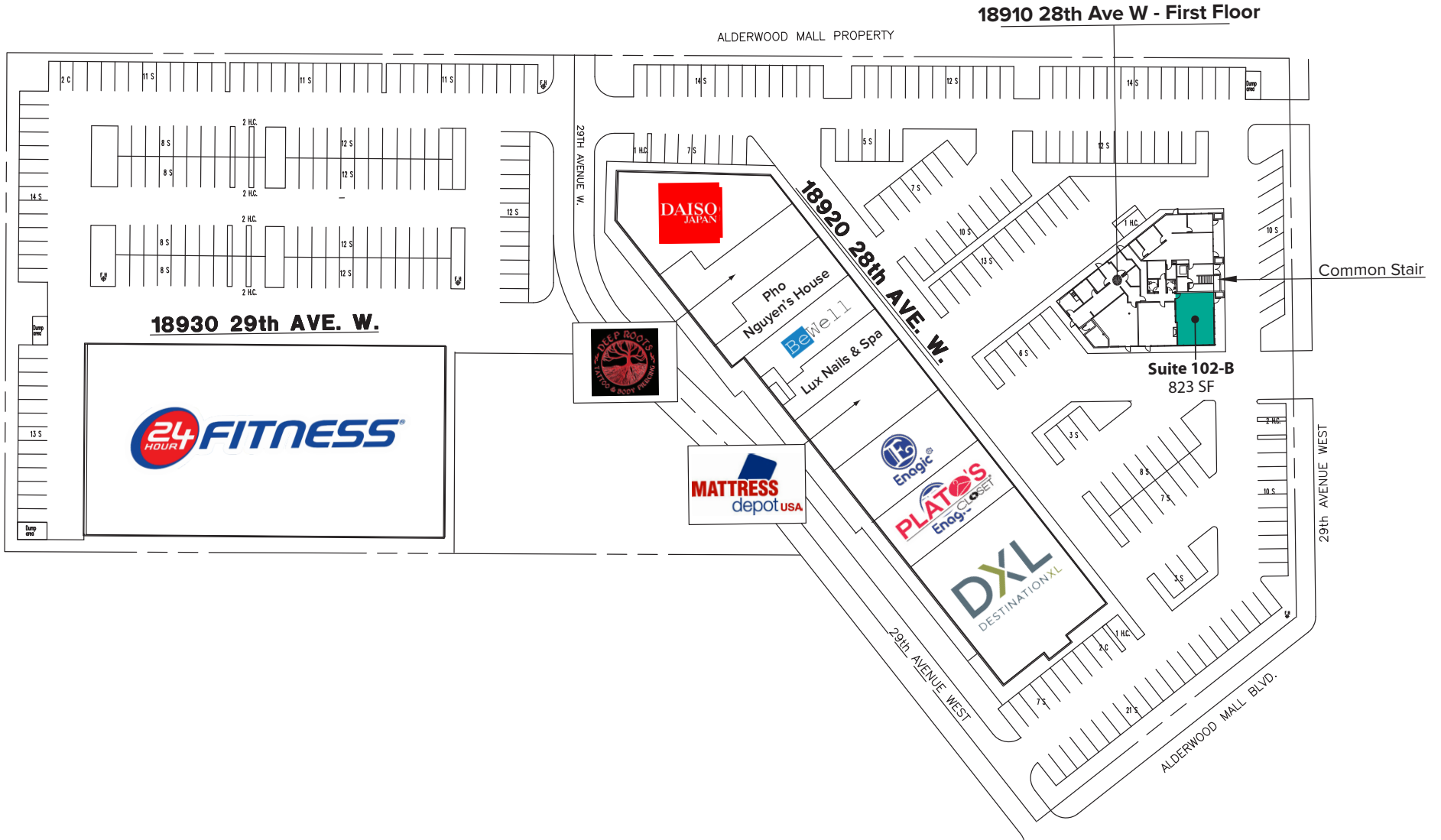
18910 FLOOR PLAN

SUITE 102-B FEATURES

- Available with 60 days' notice
- 823 SF
- \$40.00/SF, Gross
- First Floor Office/Retail Space
- Open Work Area
- Direct and Lobby Entries



SITE PLAN



The information provided herein has been obtained from sources believed to be reliable, but no representation or warranty, express or implied, is made with respect to the accuracy or completeness of any such information. Each prospective buyer or tenant should independently investigate, evaluate and verify all information provided herein and any other matters deemed material. Please consult your attorney, tax advisor or other professional advisor. The terms of sale or lease set forth herein are subject to change or withdrawal at any time and without notice.