

OFFICE/FLEX
SUBLEASE



BEAR CREEK PLAZA

19011 Woodinville-Snohomish Road NE | Woodinville, WA

Caleb Farnworth, CCIM

425.289.2235

calebf@rosenharbottle.com

Grant Rubenstein

425.289.2220

grant@rosenharbottle.com

425.454.3030
rosenharbottle.com

PO Box 5003
Bellevue, WA 98009 - 5003





HIGH-VISIBILITY TO WOODINVILLE-SNOHOMISH ROAD & SR-522

\$2,500/Month, Gross

1,194 SF Available

BUILDING FEATURES:

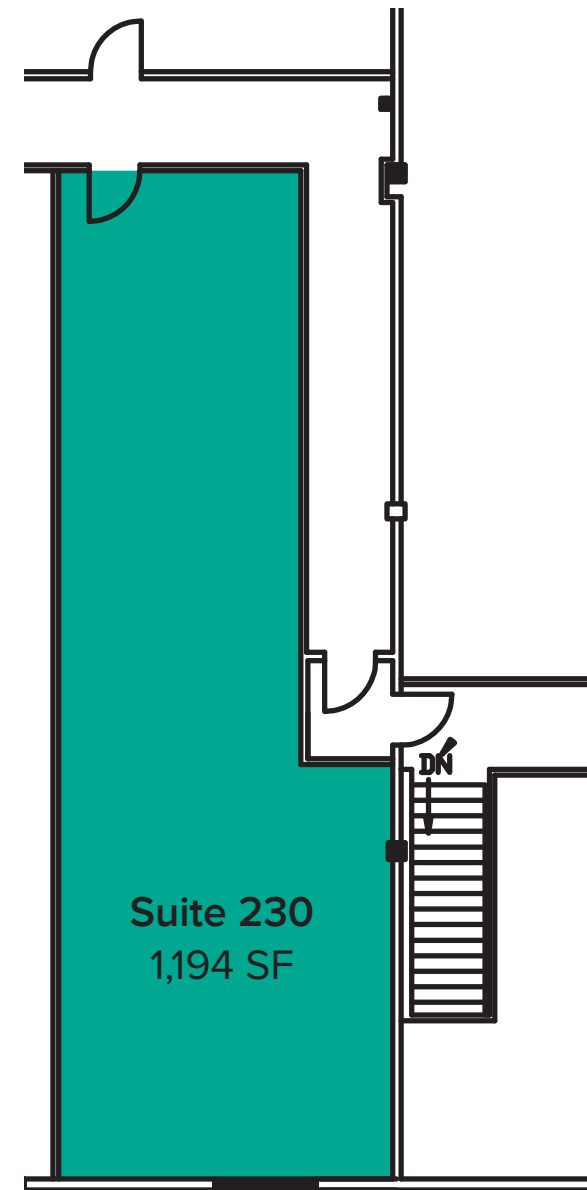
- Abundant Parking
- Sprinkled Building
- Close to Downtown Woodinville, Costco, Industrial Area, and Wineries
- Quick Access to SR-522 and I-405

The information provided herein has been obtained from sources believed to be reliable, but no representation or warranty, express or implied, is made with respect to the accuracy or completeness of any such information. Each prospective buyer or tenant should independently investigate, evaluate and verify all information provided herein and any other matters deemed material. Please consult your attorney, tax advisor or other professional advisor. The terms of sale or lease set forth herein are subject to change or withdrawal at any time and without notice.

SUITE 230 FLOOR PLAN

SUITE FEATURES

- Available now for Sublease
- Lease expires: 5/31/2026
- 1,194 SF
- \$2,500/Month, Gross
- Office/Flex space
- Current use: Fitness studio
- ~14' High ceilings
- Open work area



LOCATION MAP



LEGEND:

- 01 Route 522 Taproom
- 02 Woodinville Town Center
- 03 Hampton Inn & Suites
- 04 Gold's Gym
- 05 Iron Cellars
- 06 The PicNic Table
- 07 Locust Cider & Brewing
- 08 Elevation Cellars
- 09 Kestrel Vintners
- 10 Patterson Cellars
- 11 Love That Red Winery
- 12 20 Corners Brewing
- 13 EFESTE
- 14 Costco
- 15 Restaurant Depot