

# MEADOW CREEK OFFICE PARK

22500-22619 SE 64<sup>th</sup> Place, Issaquah, WA 98027



## CLASS A OFFICE & MEDICAL SPACE

752 SF - 2,641 SF Available

\$22.00-\$27.00/SF, NNN

### FEATURES:

- Minutes from Costco Headquarters
- Class A Finishes
- Amazing Location off I-90 at Front St./E Lake Sammamish Pkwy
- Nearby Amenities Include Retailers, Grocers, Restaurants, Hospital & Parks
- Private Balcony & Free Surface Parking
- Park-Like, Campus Setting

For more information, contact:

**ROSEN~HARBOTTLE**  
**COMMERCIAL REAL ESTATE**

**Brian Stewart**

(425) 289-2222

brians@rosenharbottle.com

**Jerry Harbottle**

(425) 289-2216

jerry@rosenharbottle.com

www.rosenharbottle.com

Rosen~Harbottle Commercial Real Estate | P.O. Box 5003 Bellevue, WA 98009-5003  
phone: (425) 454-3030 fax: (425) 454-6705 | www.rosenharbottle.com

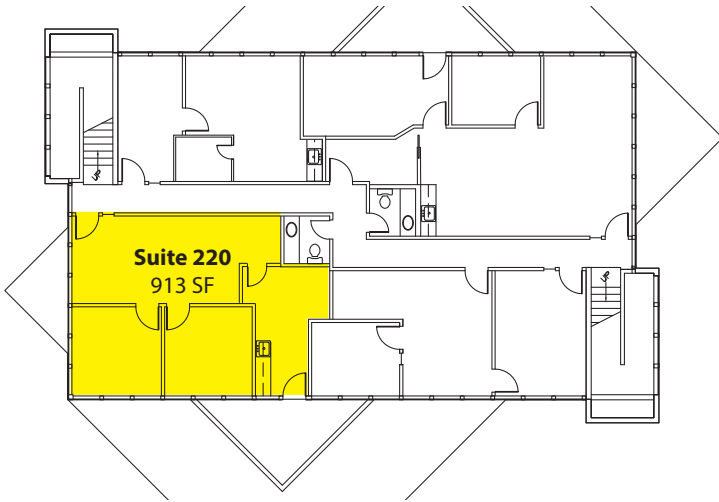
The information provided has been obtained from sources believed reliable. While we do not doubt its accuracy, we have not verified and make no guarantee, warranty or representation about it. It is your sole responsibility to independently confirm its accuracy and completeness.

# MEADOW CREEK OFFICE PARK

22500-22619 SE 64<sup>th</sup> Place, Issaquah, WA 98027

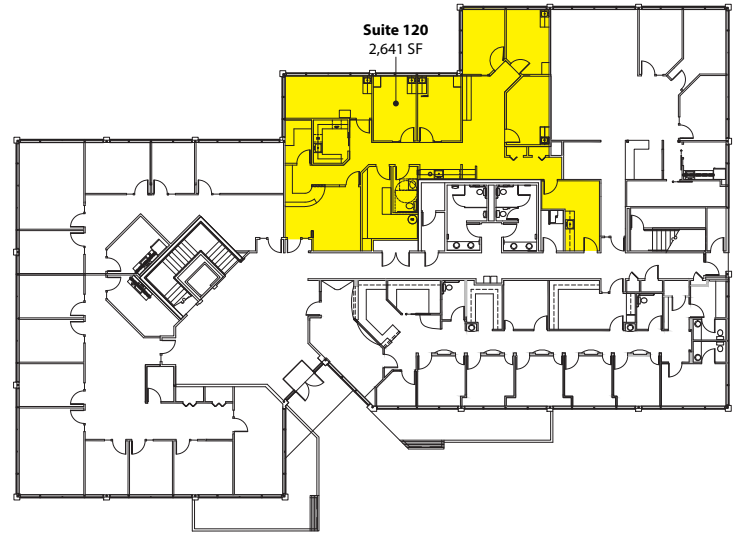
## Building D - Second Floor

2 Large POs, Kitchenette, Reception, &  
Open Work Space  
Available 1/1/2015



## Building G - First Floor

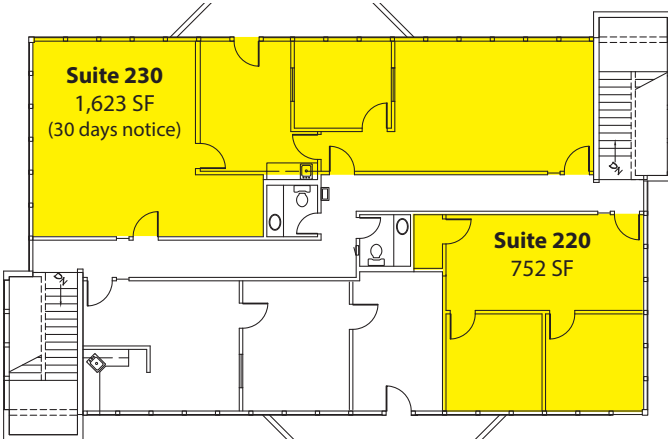
Extensive Medical Build Out  
Sublease through 12/31/2015



## Building F - Second Floor

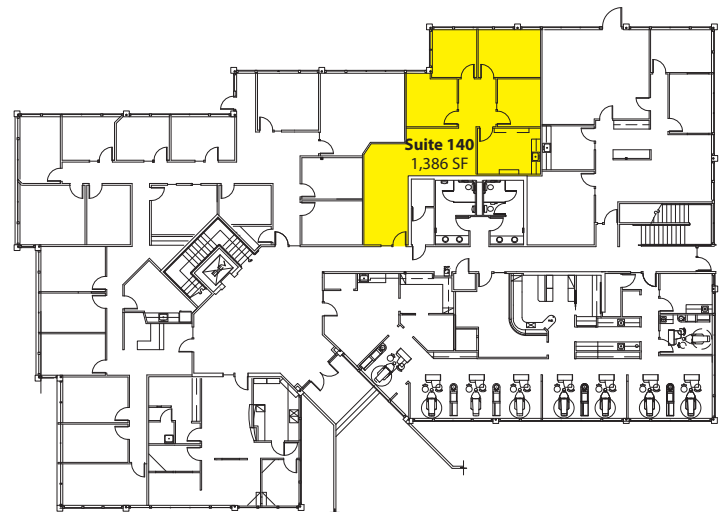
Suites 230:  
Available for Sublease (30 days notice)

Suite 220:  
2 POs & Reception  
Available 3/1/2015



## Building H - First Floor

3 POs, Kitchenette/Break Room,  
Reception & Open Area  
Available 3/15/2015



Floor plans not to scale as shown

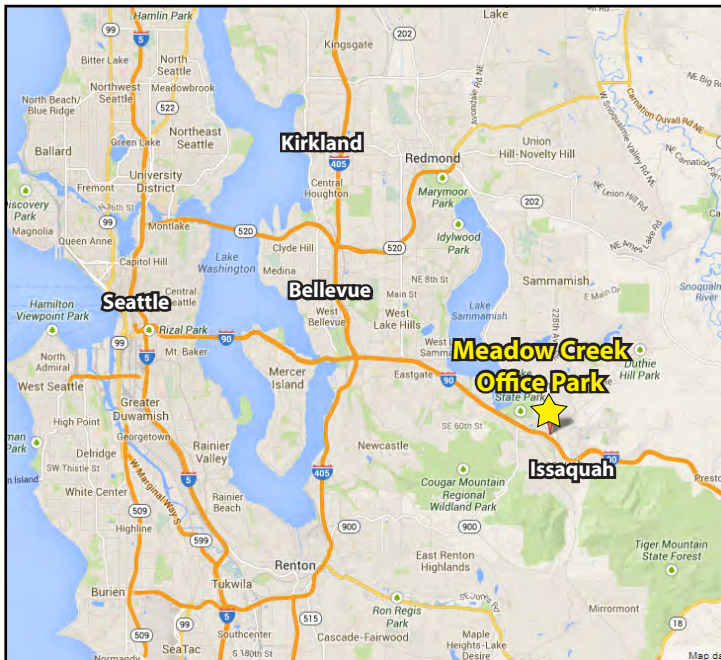
Rosen~Harbottle Commercial Real Estate | P.O. Box 5003 Bellevue, WA 98009-5003  
phone: (425) 454-3030 fax: (425) 454-6705 | [www.rosenharbottle.com](http://www.rosenharbottle.com)

The information provided has been obtained from sources believed reliable. While we do not doubt its accuracy, we have not verified and make no guarantee, warranty or representation about it. It is your sole responsibility to independently confirm its accuracy and completeness.



# MEADOW CREEK OFFICE PARK

22500-22619 SE 64<sup>th</sup> Place, Issaquah, WA 98027



For more information, contact:

**ROSEN~HARBOTTLE  
COMMERCIAL REAL ESTATE**

**Brian Stewart**

(425) 289-2222

[brians@rosenharbottle.com](mailto:brians@rosenharbottle.com)

**Jerry Harbottle**

(425) 289-2216

[jerry@rosenharbottle.com](mailto:jerry@rosenharbottle.com)

[www.rosenharbottle.com](http://www.rosenharbottle.com)

Rosen~Harbottle Commercial Real Estate | P.O. Box 5003 Bellevue, WA 98009-5003  
phone: (425) 454-3030 fax: (425) 454-6705 | [www.rosenharbottle.com](http://www.rosenharbottle.com)

The information provided has been obtained from sources believed reliable. While we do not doubt its accuracy, we have not verified and make no guarantee, warranty or representation about it. It is your sole responsibility to independently confirm its accuracy and completeness.