

LARGE CLEAR-SPAN WAREHOUSE

6943 Salashan Pkwy, Ferndale WA 98248



FOR LEASE
\$0.78/ SF + NNN

- 25,862 TOTAL SF (DIVISIBLE TO 12,805 SF)
- 4 GRADE-LEVEL & 4 DOCK-HIGH DOORS (COVERED LOADING DOCKS)
- FULLY INSULATED
- 1,000- AMP 480V 3-PHASE POWER
- WET SPRINKLER SYSTEM



FOR MORE INFORMATION PLEASE CONTACT:

GREG MARTINEAU
(360) 820 - 4645
GREG@GAGECRE.COM

TRACY CARPENTER
(360) 303 - 2608
TRACY@GAGECRE.COM

PROPERTY HIGHLIGHTS

Central Location – Centrally located in Whatcom County, and easily accessible from I-5 through exit 548. 6943 Salashan offers a strategic location for warehouse needs.

Power– 1,000 Amp, 480 Volt 3-Phase Power available.

Sprinklers – Warehouse is fully Sprinkled (Wet System).

Flexible Floor Plan– Warehouse is 25,862 SF, with the possibility to demise as small as 12,805 SF.

Parking & Turnaround– 7 marked Parking spaces, ample room for truck maneuverability.

Flexible Docking – Warehouse offers a mix of 4 Grade-level (2 oversized & 2 standard) & 4 covered Dock-high doors.

Insulated – Warehouse is fully insulated.

Clear Span Warehouse – with 20 ft. Eave height.

Office – 320 SF (Two Offices + Restroom).



PROPERTY OVERVIEW

Address: 6943 Salashan Parkway,
Ferndale, WA 98248

APN: 3902061181070000

Total Building SF: 25,862

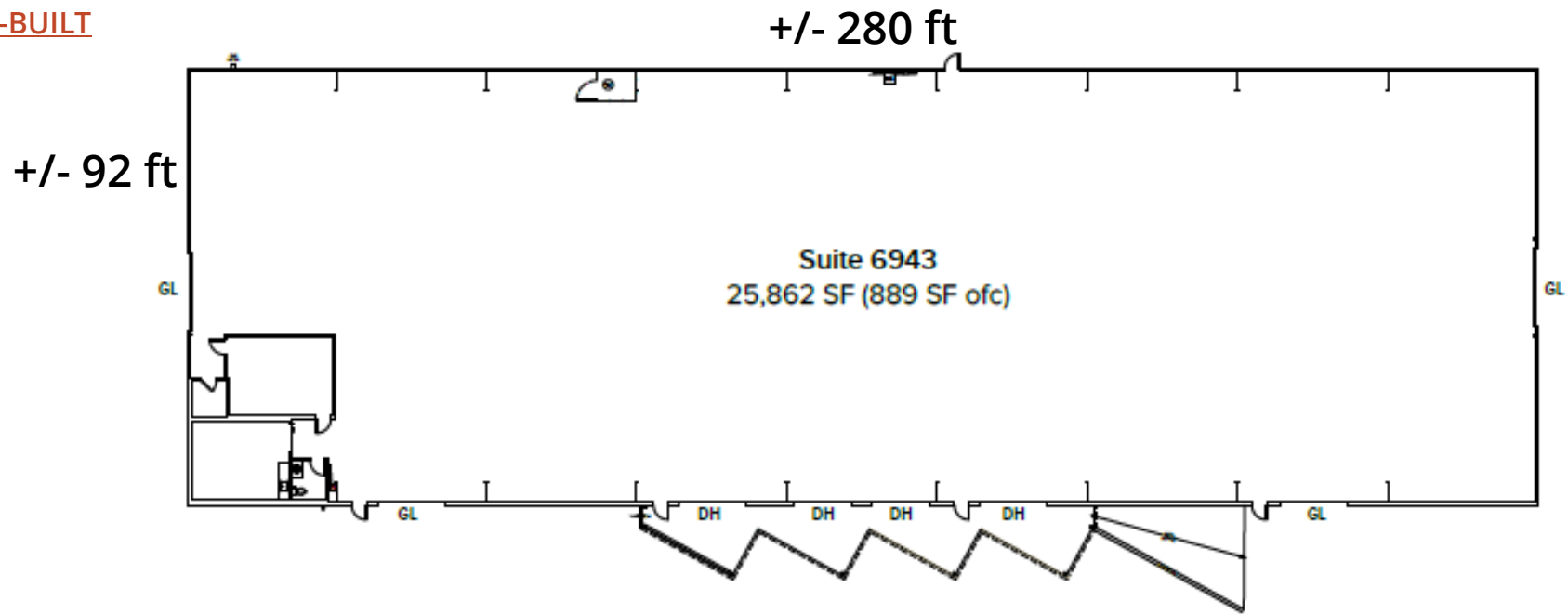
Site Area: 1.54 Acres (67,082 SF)

Year Built: 2002

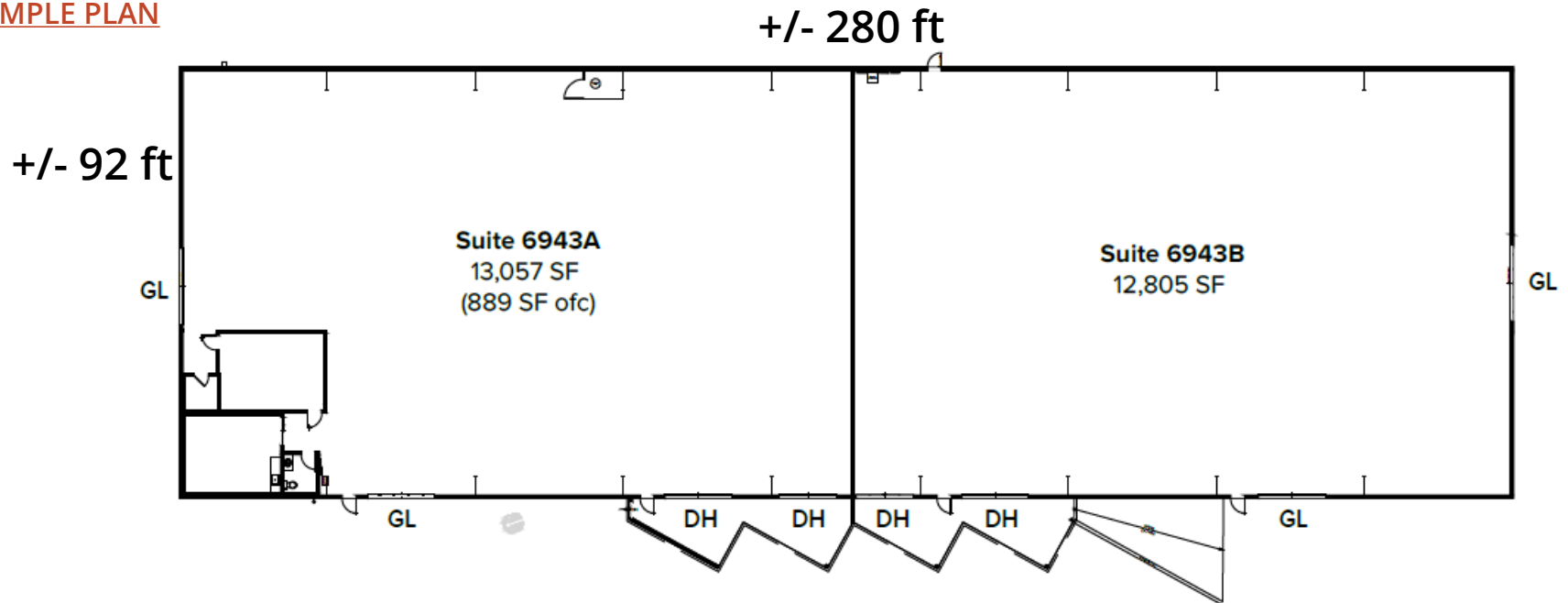
Market: Ferndale

FLOOR PLANS

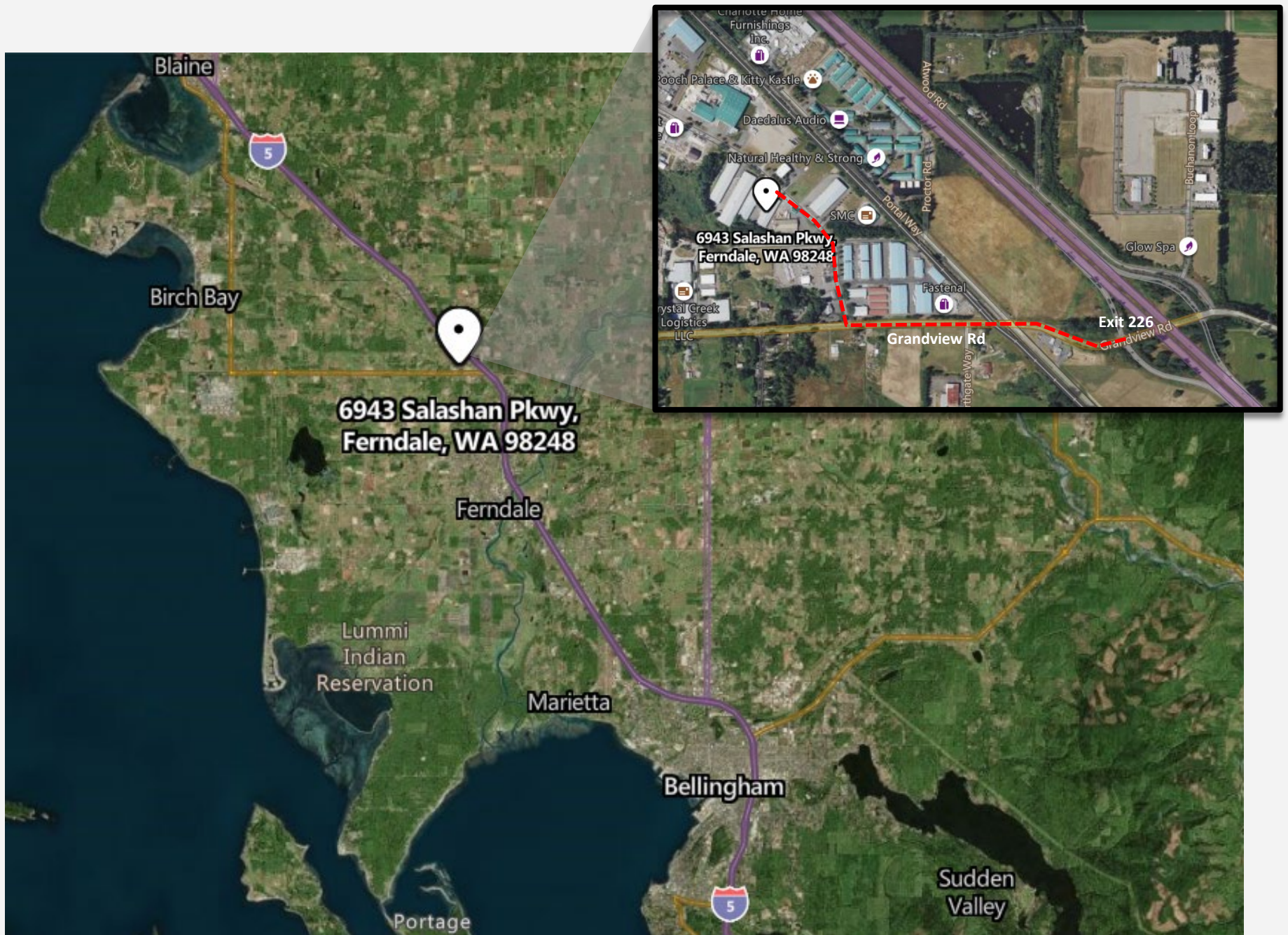
AS-BUILT



SAMPLE PLAN



MAP



SITE AERIAL





PROPERTY PHOTOS

AERIAL PHOTOS



EXTERIOR PHOTOS



EXTERIOR PHOTOS



INTERIOR PHOTOS



INTERIOR PHOTOS





FOR MORE INFORMATION

PLEASE CONTACT:

TRACY CARPENTER

GAGE COMMERCIAL REAL ESTATE, LLC.

BROKER/OWNER

360.303.2608

TRACY@GAGECRE.COM

GREG MARTINEAU, CCIM

GAGE COMMERCIAL REAL ESTATE, LLC.

BROKER/OWNER

360.820.4645

GREG@GAGECRE.COM