

OFFICE  
LEASE



## RH NORTH CREEK BUSINESS CENTER, Building 1

11812-11824 North Creek Parkway N | Bothell, WA

**Brian Stewart**

425.289.2222

brians@rosenharbottle.com

425.454.3030  
rosenharbottle.com

**Caleb Farnworth, CCIM**

425.289.2235

calebf@rosenharbottle.com

PO Box 5003  
Bellevue, WA 98009 - 5003



# CLASS A OFFICE SPACES

1,132 SF - 2,531 SF Available

\$22.50/SF, NNN

## LOCATION FEATURES:

- Class A Corporate Campus
- On-Site Deli and Childcare
- Nearby Amenities: Restaurants, Retail Shops, Food Trucks, Corporate Marriott, Walking Trails, Sports Fields, & Fitness Center
- Quick Access to I-405, SR-522 & Downtown Bothell

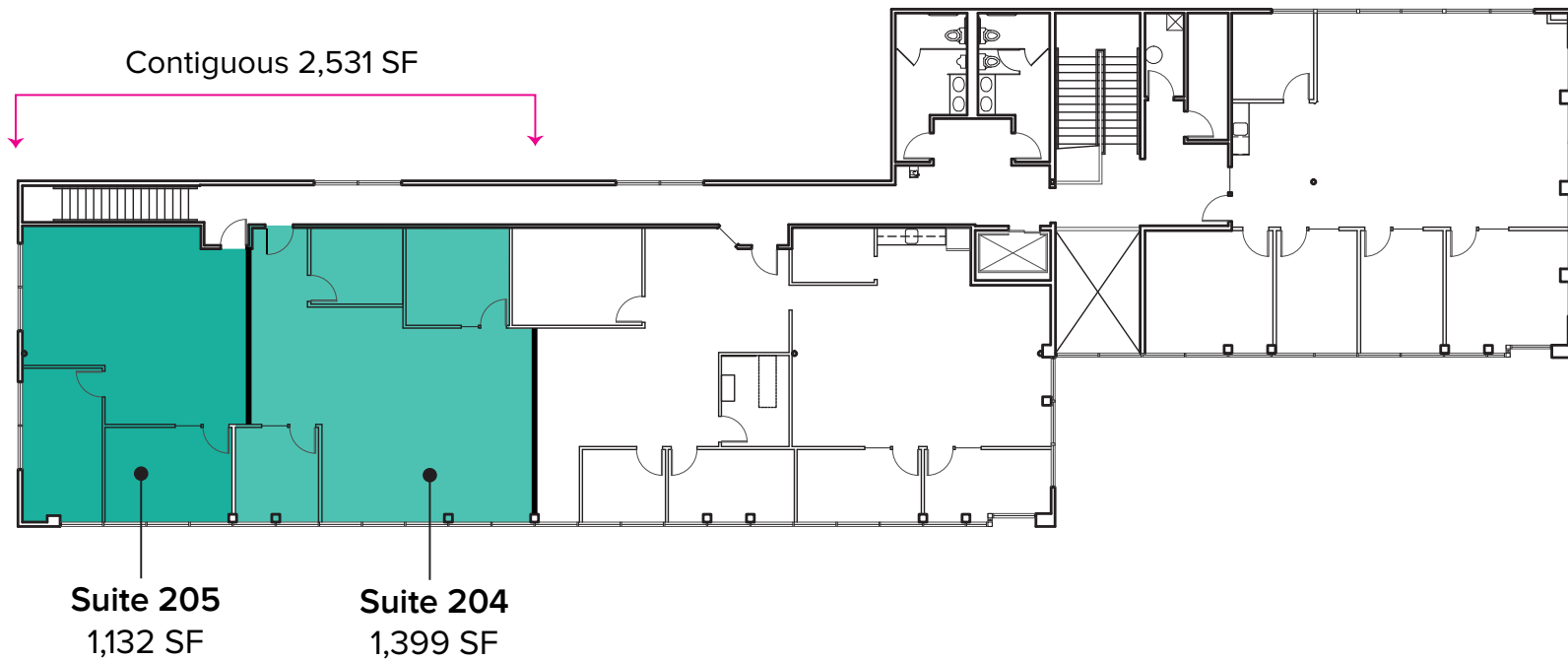
## BUILDING 1 DETAILS:

- Extended window line provides abundant natural light
- Includes lab space
- Building elevator
- Building signage available
- Flexibility in demising space



# BUILDING 1 (11812) FLOOR PLAN

Suite	SF	Rate	Available
1-204	1,399 SF	\$22.50/SF, NNN	Now
1-205	1,132 SF	\$22.50/SF, NNN	Now
Contiguous	2,531 SF	\$22.50/SF, NNN	Now



The information provided herein has been obtained from sources believed to be reliable, but no representation or warranty, express or implied, is made with respect to the accuracy or completeness of any such information. Each prospective buyer or tenant should independently investigate, evaluate and verify all information provided herein and any other matters deemed material. Please consult your attorney, tax advisor or other professional advisor. The terms of sale or lease set forth herein are subject to change or withdrawal at any time and without notice.

# CORPORATE NEIGHBORS



## LEGEND:

- 01 AT&T
- 02 Valeant Solta Medical
- 03 General Dynamics
- 04 LuxerCare
- 05 ADT Security
- 06 Google
- 07 AT&T
- 08 United Healthcare Services
- 09 Progressive, Banner Bank
- 10 HUB International
- 11 State Farm
- 12 Talentwise
- 13 Puget Sound Energy
- 14 Tetra Tech
- 15 T-Mobile

### DRIVE TIMES:

I-405 ( ): 3 Minutes  
 Downtown Bothell: 6 Minutes  
 Downtown Woodinville: 6 Minutes

