

Park Heights Building

1800 112TH AVENUE NE, BELLEVUE, WA 98004



RARE VACANCY ON 112TH AVENUE NE



BELLEVUE OFFICE FOR LEASE
1,853 SF - 5,174 SF Available
\$28.50/SF, Full-Service

FEATURES:

- Corner Suites with Efficient Layouts
- Close-In Bellevue Location
- Free Surface Parking
- Across from Hidden Valley Park
- Extensive Glass Line

ROSEN | HARBOTTLE
RH

For more information, contact:

ROSEN~HARBOTTLE
COMMERCIAL REAL ESTATE

Grant Rubenstein
(425) 289-2220
grant@rosenharbottle.com

www.rosenharbottle.com

Rosen~Harbottle Commercial Real Estate | P.O. Box 5003 Bellevue, WA 98009-5003
phone: (425) 454-3030 fax: (425) 454-6705 | www.rosenharbottle.com

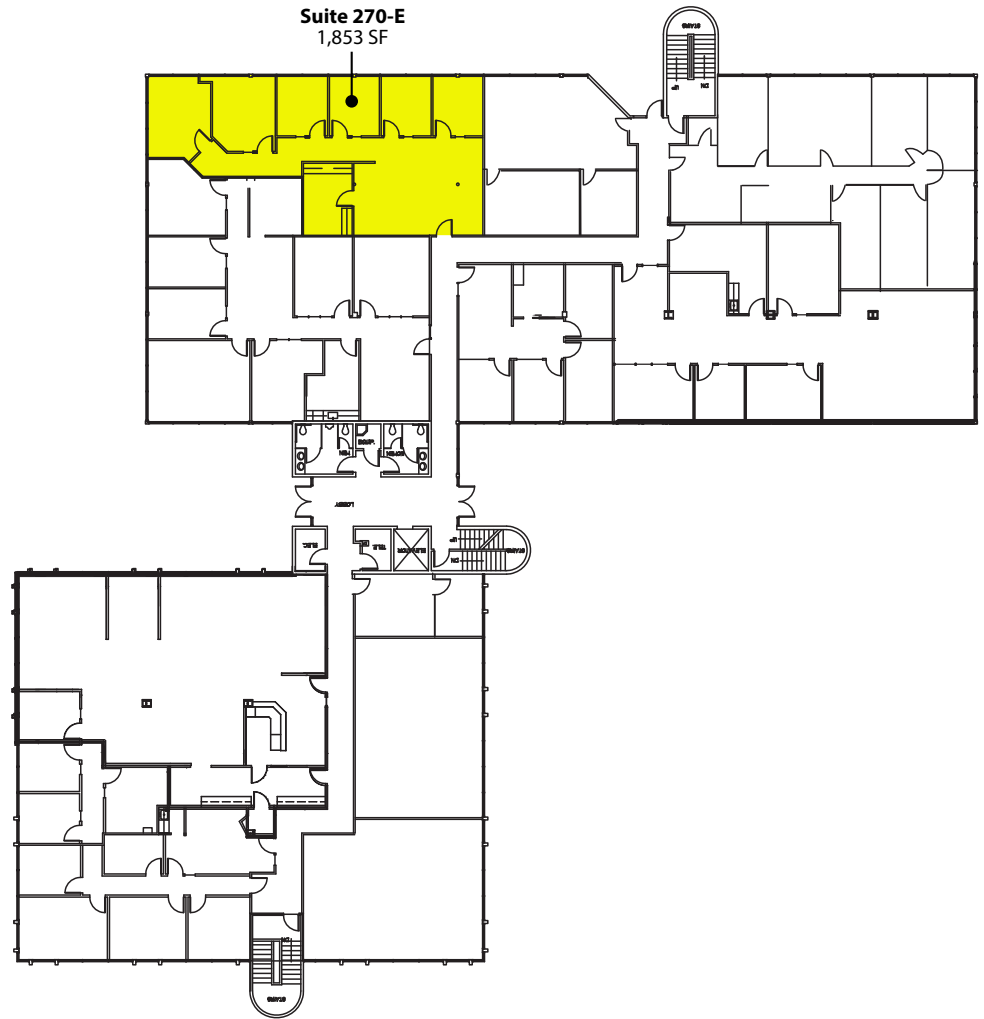
The information provided has been obtained from sources believed reliable. While we do not doubt its accuracy, we have not verified and make no guarantee, warranty or representation about it. It is your sole responsibility to independently confirm its accuracy and completeness.

Park Heights Building

1800 112TH AVENUE NE, BELLEVUE, WA 98004

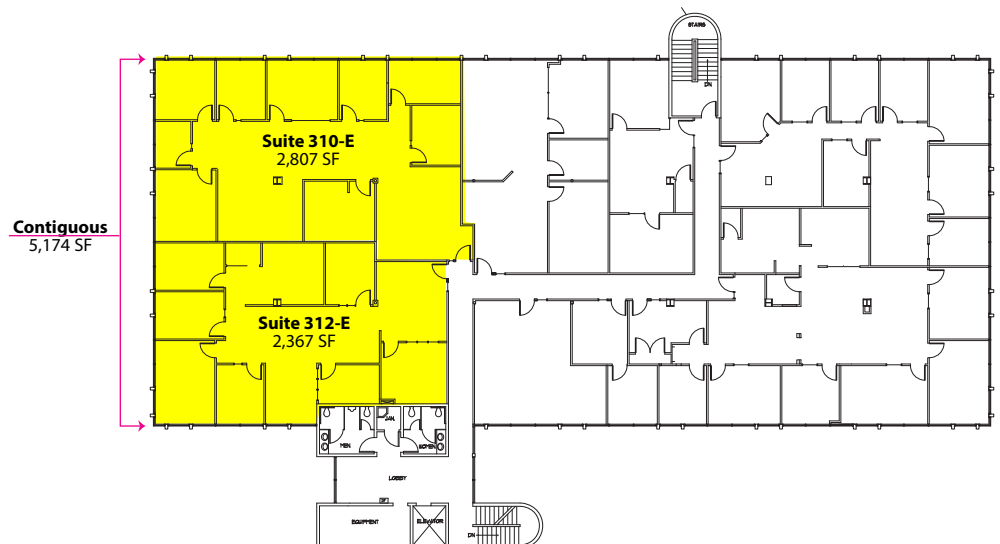
SECOND FLOOR

Suite	Square Feet	Available
270-E	1,835 SF	Now



THIRD FLOOR

Suite	Square Feet	Available
310-E	2,807 SF	Now
312-E	2,367 SF	Now
Contiguous	5,174 SF	



Rosen~Harbottle Commercial Real Estate | P.O. Box 5003 Bellevue, WA 98009-5003
phone: (425) 454-3030 fax: (425) 454-6705 | www.rosenharbottle.com

The information provided has been obtained from sources believed reliable. While we do not doubt its accuracy, we have not verified and make no guarantee, warranty or representation about it. It is your sole responsibility to independently confirm its accuracy and completeness.

Park Heights Building

1800 112TH AVENUE NE, BELLEVUE, WA 98004



Hidden Valley
Sports Complex

112th Avenue NE

Park Heights
Building

INTERSTATE
405

For more information, contact:

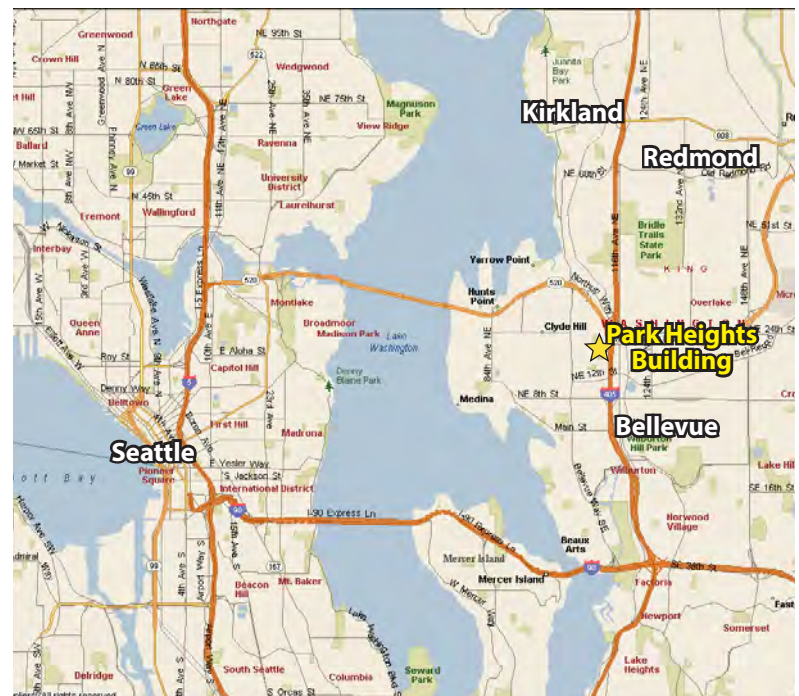
**ROSEN~HARBOTTLE
COMMERCIAL REAL ESTATE**

Grant Rubenstein

(425) 289-2220

grant@rosenharbottle.com

www.rosenharbottle.com



Rosen~Harbottle Commercial Real Estate | P.O. Box 5003 Bellevue, WA 98009-5003
phone: (425) 454-3030 fax: (425) 454-6705 | www.rosenharbottle.com

The information provided has been obtained from sources believed reliable. While we do not doubt its accuracy, we have not verified and make no guarantee, warranty or representation about it. It is your sole responsibility to independently confirm its accuracy and completeness.