

# RH North Creek Business Center

11810-11824 North Creek Parkway N, Bothell, WA 98011



Building 1



Building 2



Building 3



Building 6

## OFFICE, FLEX & TECH/ASSEMBLY \$16.50/SF Office | \$8.40/SF Whse, NNN

Bldg-Suite	Square Feet	Type	Available
2-100	24,705 SF	Tech/Assembly	2/1/2015
		Heavy power, HVAC throughout & versatile loading	
6-109	2,017 SF (818 SF ofc)	Flex	5/15/2014
		Former lab space offers heated and air conditioned warehouse. <b>Up to 4,400 SF available.</b>	
6-110	2,383 SF (1,800 SF ofc)	Office	11/1/2014
		Open office with multiple POs, direct access, small storage and GL door.	
3-101A	1,483 SF	Warehouse	5/1/2014
		Warehouse with restroom. 1 GL.	

### FEATURES:

- Great North Creek Location
  - Off I-405, Exit 24 in Bothell (King County)
- Nearby Amenities: Restaurants, Retail, Childcare, Hotel, & Sports Fields
- Jogging & Parcourse Trails along North Creek
- New Paint & Signage



For more information, contact:

ROSEN~HARBOTTLE  
COMMERCIAL REAL ESTATE

**Brian Stewart**  
(425) 289-2222

brians@rosenharbottle.com

**Caleb Farnworth, CCIM**  
(425) 289-2235

calebf@rosenharbottle.com

www.rosenharbottle.com

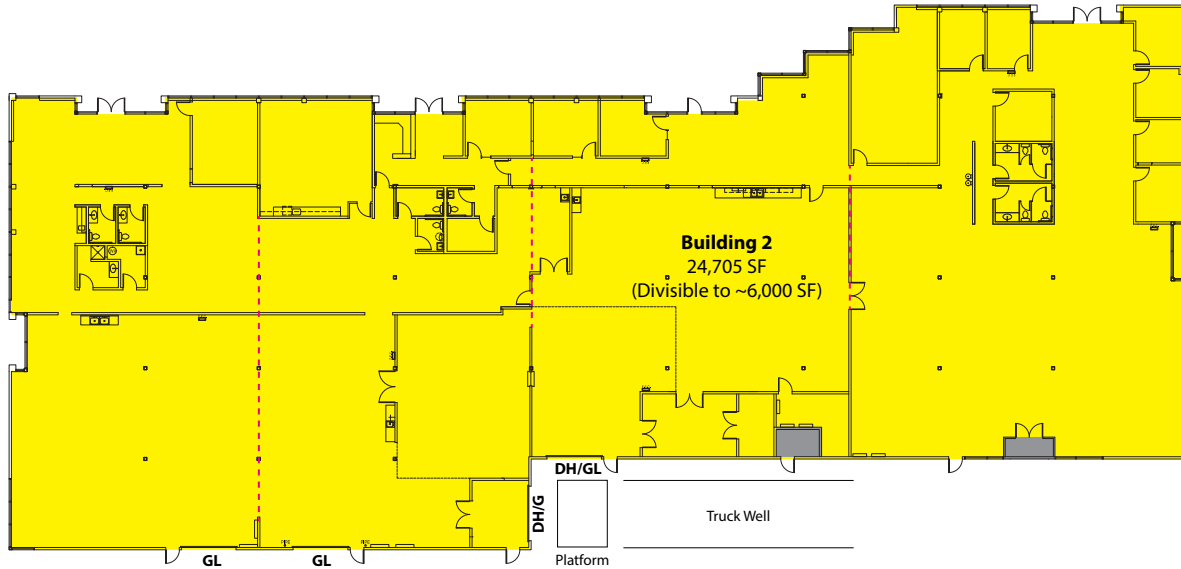
Rosen~Harbottle Commercial Real Estate | P.O. Box 5003 Bellevue, WA 98009-5003  
phone: (425) 454-3030 fax: (425) 454-6705 | www.rosenharbottle.com

The information provided has been obtained from sources believed reliable. While we do not doubt its accuracy, we have not verified and make no guarantee, warranty or representation about it. It is your sole responsibility to independently confirm its accuracy and completeness.

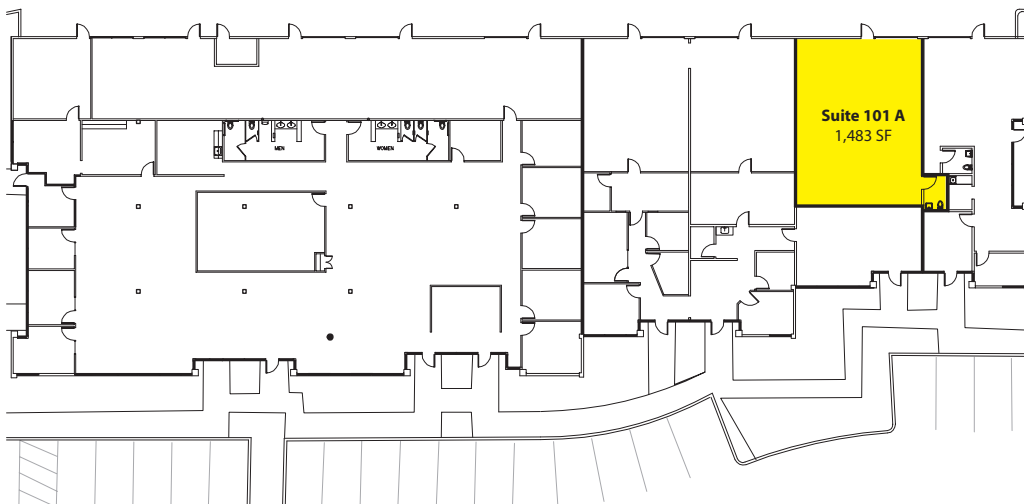
# RH North Creek Business Center

11810-11824 North Creek Parkway N, Bothell, WA 98011

## Building 2



## Building 3



Rosen~Harbottle Commercial Real Estate | P.O. Box 5003 Bellevue, WA 98009-5003  
phone: (425) 454-3030 fax: (425) 454-6705 | [www.rosenharbottle.com](http://www.rosenharbottle.com)

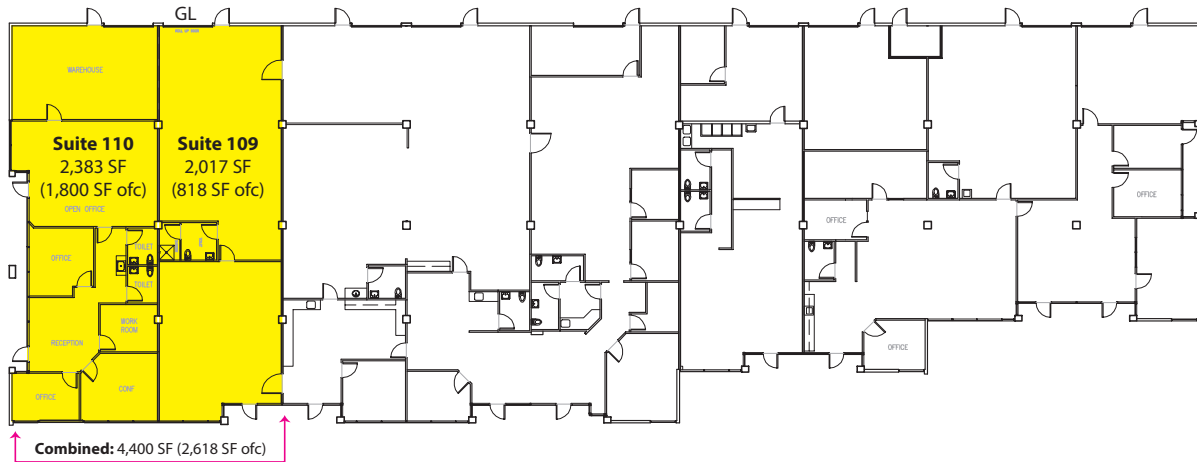
The information provided has been obtained from sources believed reliable. While we do not doubt its accuracy, we have not verified and make no guarantee, warranty or representation about it. It is your sole responsibility to independently confirm its accuracy and completeness.



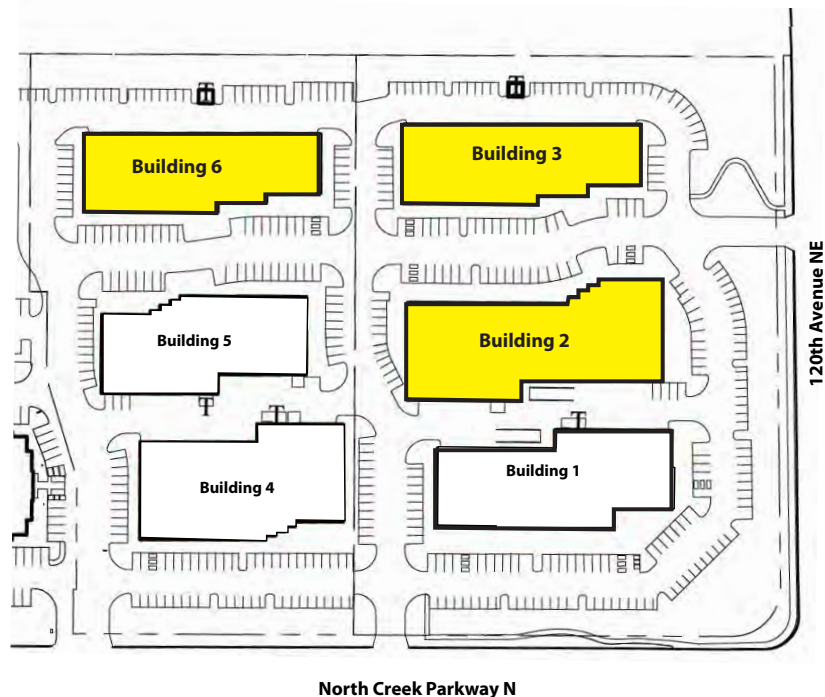
# RH North Creek Business Center

11810-11824 North Creek Parkway N, Bothell, WA 98011

## Building 6



## Site Plan



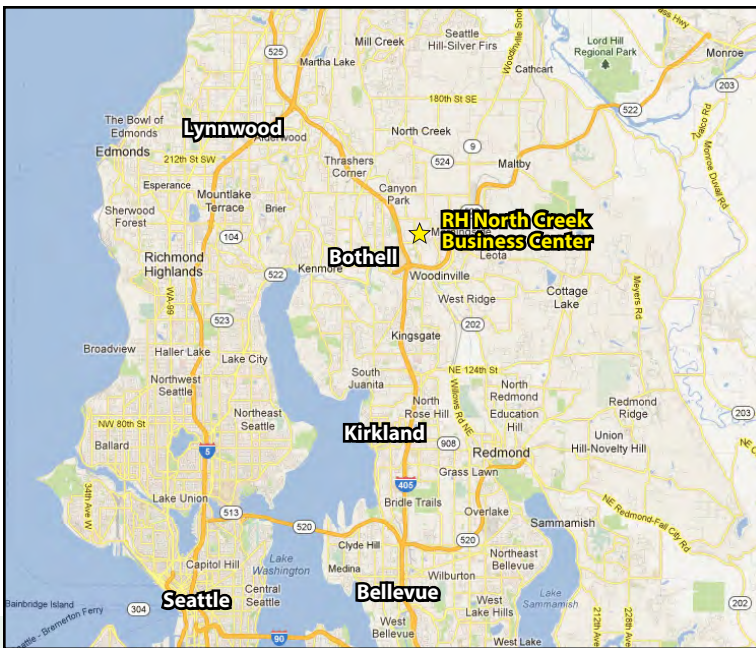
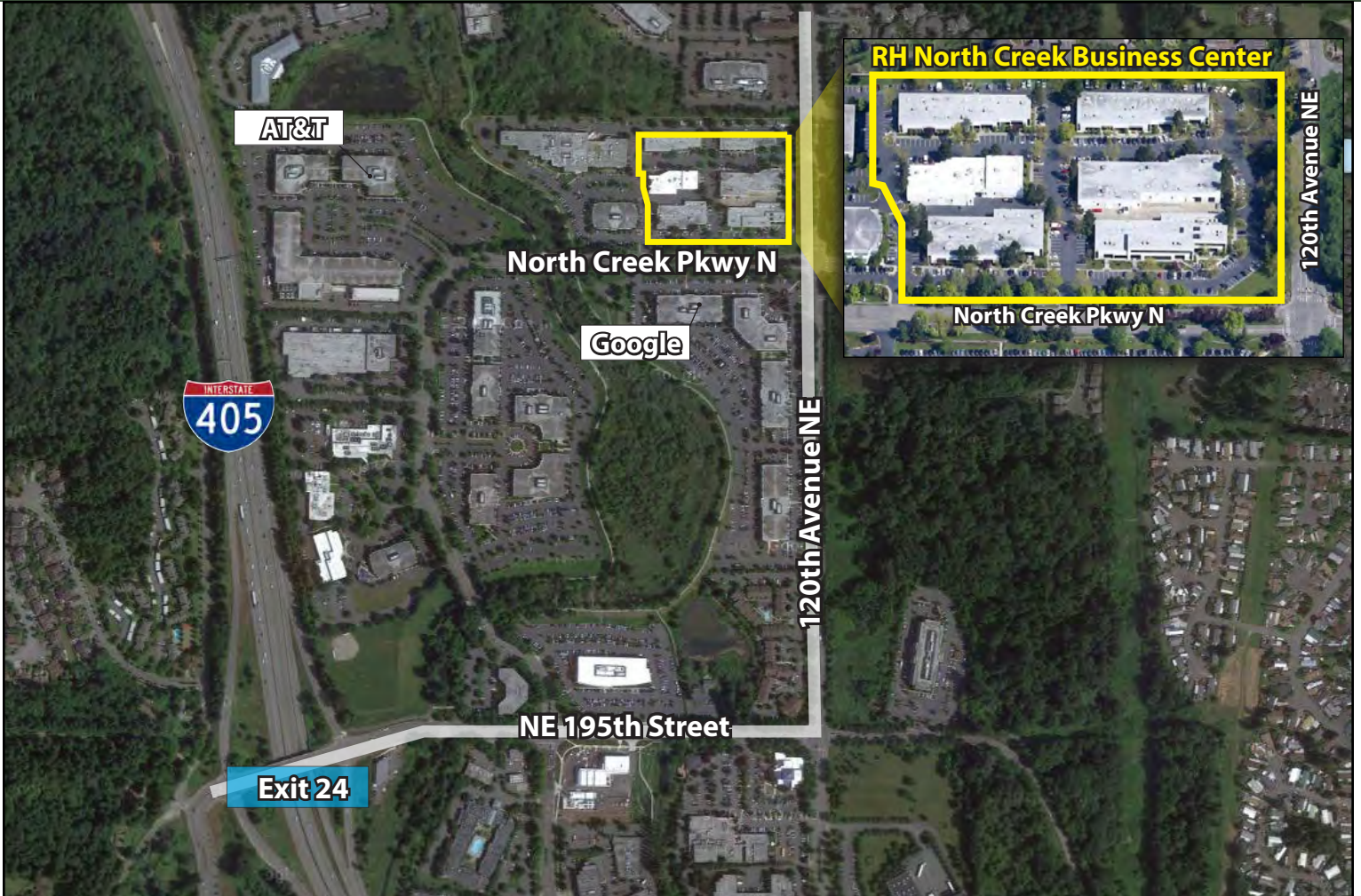
Rosen~Harbottle Commercial Real Estate | P.O. Box 5003 Bellevue, WA 98009-5003  
phone: (425) 454-3030 fax: (425) 454-6705 | [www.rosenharbottle.com](http://www.rosenharbottle.com)

The information provided has been obtained from sources believed reliable. While we do not doubt its accuracy, we have not verified and make no guarantee, warranty or representation about it. It is your sole responsibility to independently confirm its accuracy and completeness.



# RH North Creek Business Center

11810-11824 North Creek Parkway N, Bothell, WA 98011



For more information, contact:

**ROSEN~HARBOTTLE  
COMMERCIAL REAL ESTATE**

**Brian Stewart**  
(425) 289-2222  
brians@rosenharbottle.com

**Caleb Farnworth, CCIM**  
(425) 289-2235  
calebf@rosenharbottle.com

[www.rosenharbottle.com](http://www.rosenharbottle.com)

Rosen~Harbottle Commercial Real Estate | P.O. Box 5003 Bellevue, WA 98009-5003  
phone: (425) 454-3030 fax: (425) 454-6705 | [www.rosenharbottle.com](http://www.rosenharbottle.com)

The information provided has been obtained from sources believed reliable. While we do not doubt its accuracy, we have not verified and make no guarantee, warranty or representation about it. It is your sole responsibility to independently confirm its accuracy and completeness.