

**DENTAL & OFFICE  
AVAILABLE**



# MEADOW CREEK OFFICE PARK

22500 - 22619 SE 64th Place | Issaquah, WA

**Brian Stewart**

425.289.2222

brians@rosenharbottle.com

425.454.3030  
rosenharbottle.com

PO Box 5003  
Bellevue, WA 98009 - 5003





# CLASS A DENTAL & OFFICE SPACES AVAILABLE

**913 SF - 3,015 SF Available**

## OFFICE PARK DETAILS:

- Minutes from Costco Headquarters
- Amazing Location off I-90 at Front St/E Lake Sammamish Pkwy
- Nearby Amenities Include Retailers, Grocers, Restaurants, Hospital & Parks
- Park-Like, Campus Setting with Free Surface Parking

The information provided herein has been obtained from sources believed to be reliable, but no representation or warranty, express or implied, is made with respect to the accuracy or completeness of any such information. Each prospective buyer or tenant should independently investigate, evaluate and verify all information provided herein and any other matters deemed material. Please consult your attorney, tax advisor or other professional advisor. The terms of sale or lease set forth herein are subject to change or withdrawal at any time and without notice.

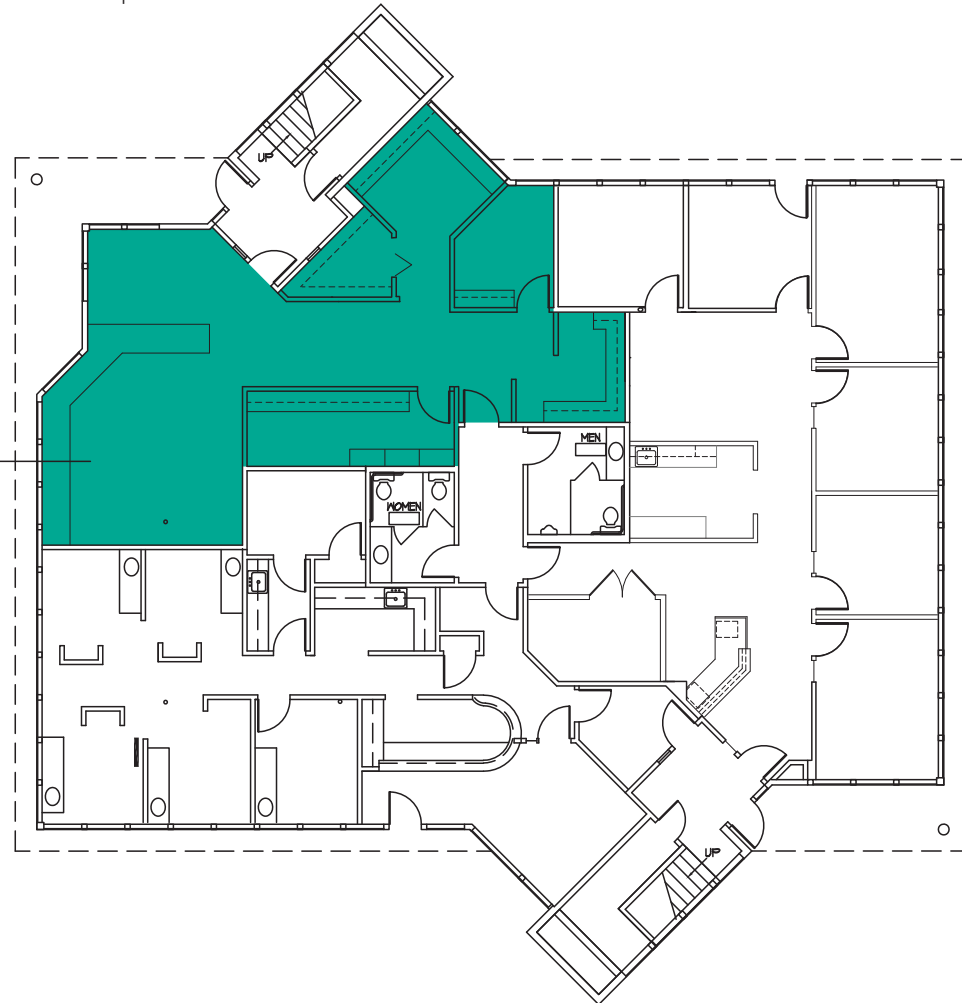
# BUILDING D (22526)

## FIRST LEVEL FLOOR PLAN

Suite	Square Feet	Rate
D-140	1,440 SF	\$28.00/SF, NNN

Notes: First floor office with 1 private room, reception area, break room, and open work space.  
**Available Now.**

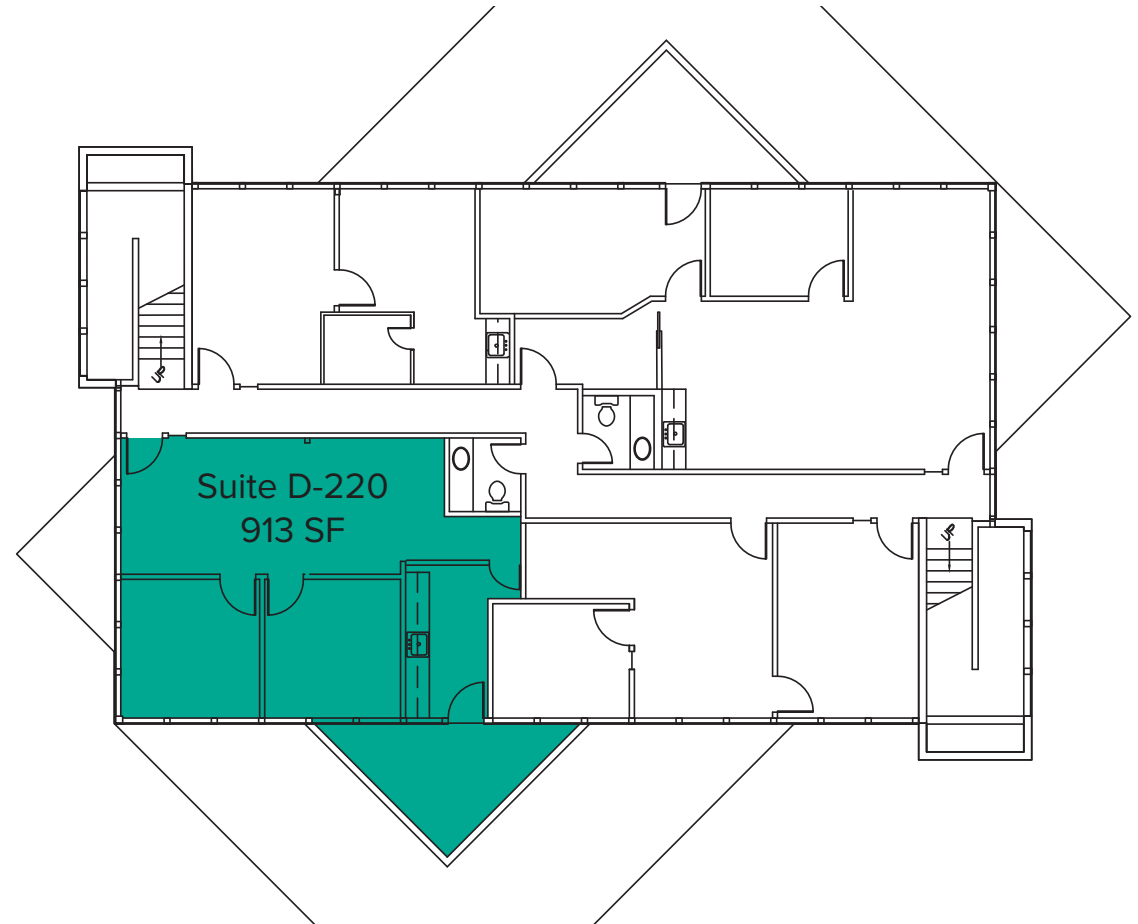
Suite D-140  
1,440 SF



# BUILDING D (22526) SECOND LEVEL FLOOR PLAN

Suite	Square Feet	Rate
D-220	913 SF	\$3,275/Month, Full Service

Notes: Second floor office with 2 private rooms, break room with kitchenette, open work space, and balcony. **Available 11/1/2021.**

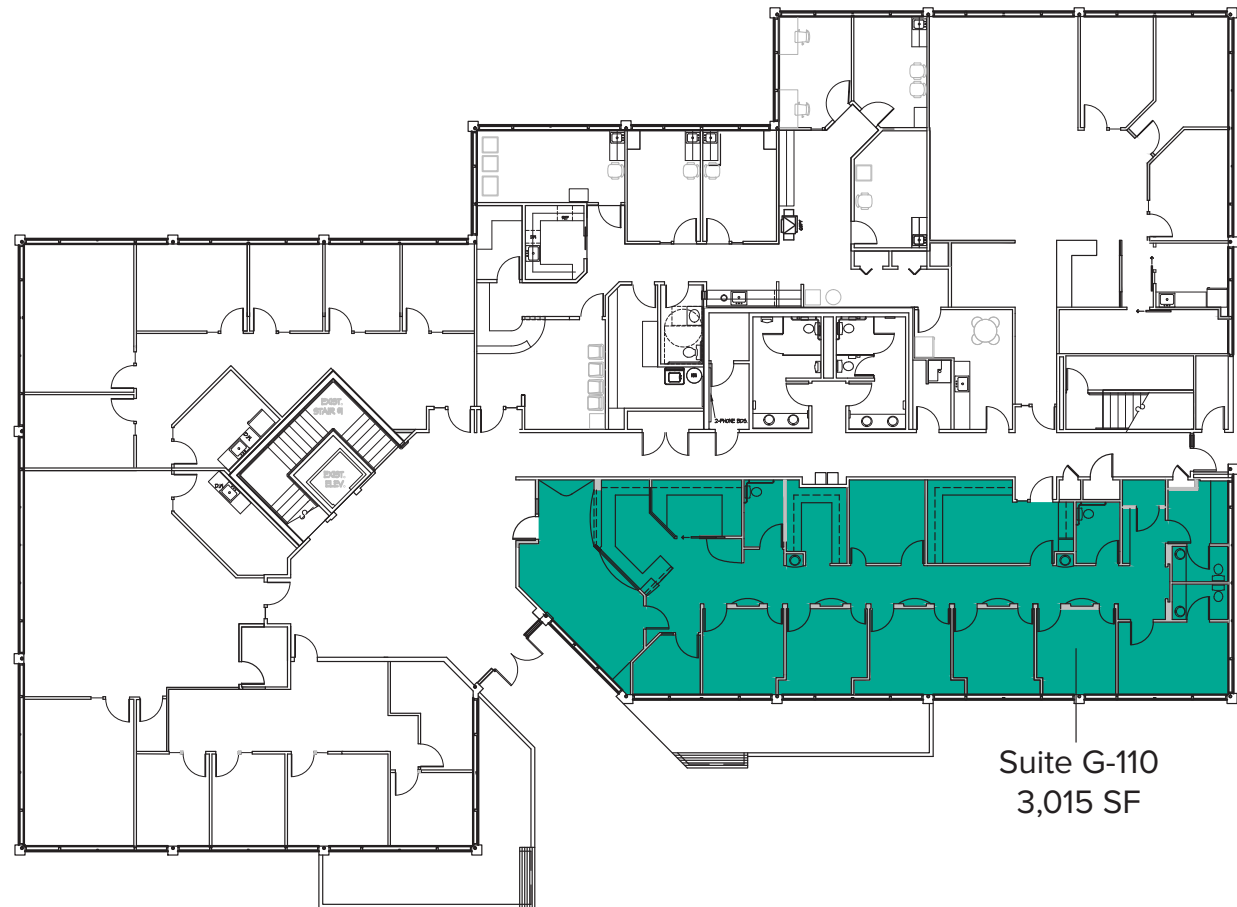


The information provided herein has been obtained from sources believed to be reliable, but no representation or warranty, express or implied, is made with respect to the accuracy or completeness of any such information. Each prospective buyer or tenant should independently investigate, evaluate and verify all information provided herein and any other matters deemed material. Please consult your attorney, tax advisor or other professional advisor. The terms of sale or lease set forth herein are subject to change or withdrawal at any time and without notice.

# BUILDING G (22500)

Suite	Square Feet	Rate
G-110	3,015 SF	\$33.00/SF, NNN

Former dental office with private rooms, reception/lobby area, break room, 4 restrooms, and 2 entrances. **Available 1/1/2022**



The information provided herein has been obtained from sources believed to be reliable, but no representation or warranty, express or implied, is made with respect to the accuracy or completeness of any such information. Each prospective buyer or tenant should independently investigate, evaluate and verify all information provided herein and any other matters deemed material. Please consult your attorney, tax advisor or other professional advisor. The terms of sale or lease set forth herein are subject to change or withdrawal at any time and without notice.

# SITE PLAN



# LOCATION MAP

