

OFFICE
LEASE



RH TECH CENTER II

19803 North Creek Parkway N | Bothell, WA

Brian Stewart

425.289.2222

brians@rosenharbottle.com

425.454.3030
rosenharbottle.com

Caleb Farnworth, CCIM

425.289.2235

calebf@rosenharbottle.com

PO Box 5003
Bellevue, WA 98009 - 5003





BROKER BONUS: \$1.25/SF
**LARGE CORPORATE-IMAGE,
CLASS A OFFICE SPACE**

6,362 SF Available

\$21.00/SF, NNN

FEATURES:

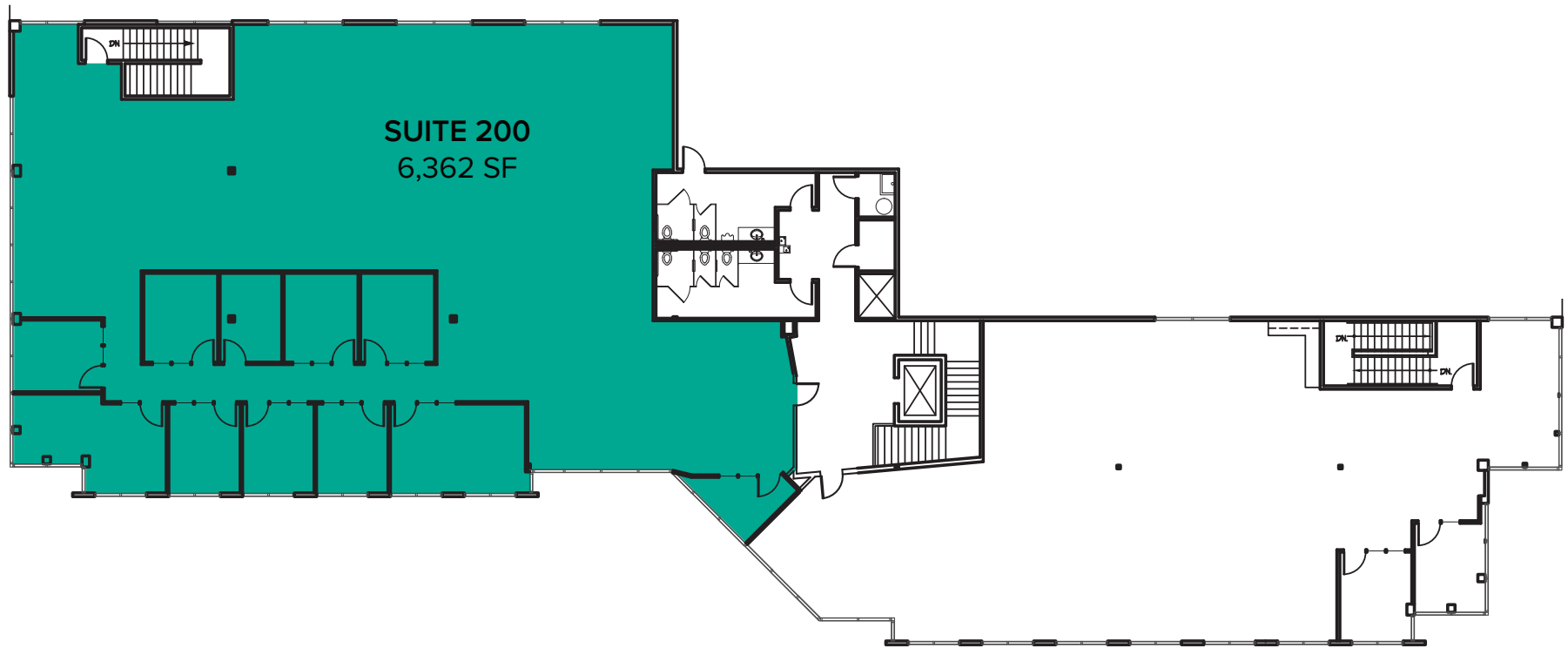
- Quick Access to I-405, SR-522, Downtown Bothell, and Downtown Woodinville
- 1 Block from Restaurants & Retail Shops
- Corporate Neighbors Include Google, AT&T, T-Mobile and Puget Sound Energy
- Directly Adjacent to Bright Horizons Child Care, Sports Fields, and Jogging Trail

The information provided herein has been obtained from sources believed to be reliable, but no representation or warranty, express or implied, is made with respect to the accuracy or completeness of any such information. Each prospective buyer or tenant should independently investigate, evaluate and verify all information provided herein and any other matters deemed material. Please consult your attorney, tax advisor or other professional advisor. The terms of sale or lease set forth herein are subject to change or withdrawal at any time and without notice.

SECOND LEVEL FLOOR PLAN



Suite	SF	Rate	Notes
200	6,362 SF	\$21.00/SF, NNN	9 private offices, 1 conference room, and open office area. Available now.



The information provided herein has been obtained from sources believed to be reliable, but no representation or warranty, express or implied, is made with respect to the accuracy or completeness of any such information. Each prospective buyer or tenant should independently investigate, evaluate and verify all information provided herein and any other matters deemed material. Please consult your attorney, tax advisor or other professional advisor. The terms of sale or lease set forth herein are subject to change or withdrawal at any time and without notice.

CORPORATE NEIGHBORS



LEGEND:

- 01 AT&T
- 02 Valeant Solta Medical
- 03 General Dynamics
- 04 LuxerCare
- 05 ADT Security
- 06 Google
- 07 AT&T
- 08 United Healthcare Services
- 09 Progressive, Banner Bank
- 10 HUB International
- 11 State Farm
- 12 Talentwise
- 13 Puget Sound Energy
- 14 T-Mobile