

# LYNNWOOD BUSINESS CENTER

19231 36th Avenue W, Lynnwood, WA 98036



## OFFICE WITH SIGNAGE & RARE FLEX SPACE

Suite	Total SF	Office SF	Rent / Month	NNNs	Total / Month	Available
D	3,079 SF	3,079 SF	\$5,132	N/A	\$6,158	7/1/2015
E	1,416 SF	291 SF	\$1,195	\$481	\$1,676	7/1/2015

Suites D & E are contiguous for 4,495 SF total.

### FEATURES:

- Building Signage
- Floor to Ceiling Windows Provide Abundant Natural Light
- Grade-Level Loading & 18' Clear Height
- Near Convention Center & Alderwood Mall Amenities
- Kitchenette
- One Block to I-5 & Close to I-405 & Hwy 99
- Comcast & Frontier High-Speed Internet Available

NNNs (Suite E) do not include water/sewer, gas, electric, or trash

For more information, contact:

**ROSEN~HARBOTTLE  
COMMERCIAL REAL ESTATE**

**Caleb Farnworth, CCIM**  
(425) 289-2235  
calebf@rosenharbottle.com

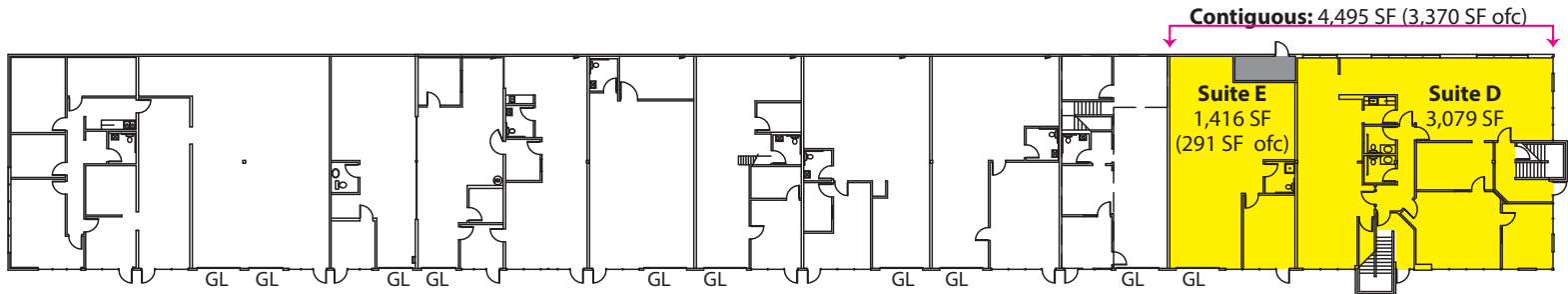
www.rosenharbottle.com

Rosen-Harbottle Commercial Real Estate | P.O. Box 5003 Bellevue, WA 98009-5003  
phone: (425) 454-3030 fax: (425) 454-6705 | www.rosenharbottle.com

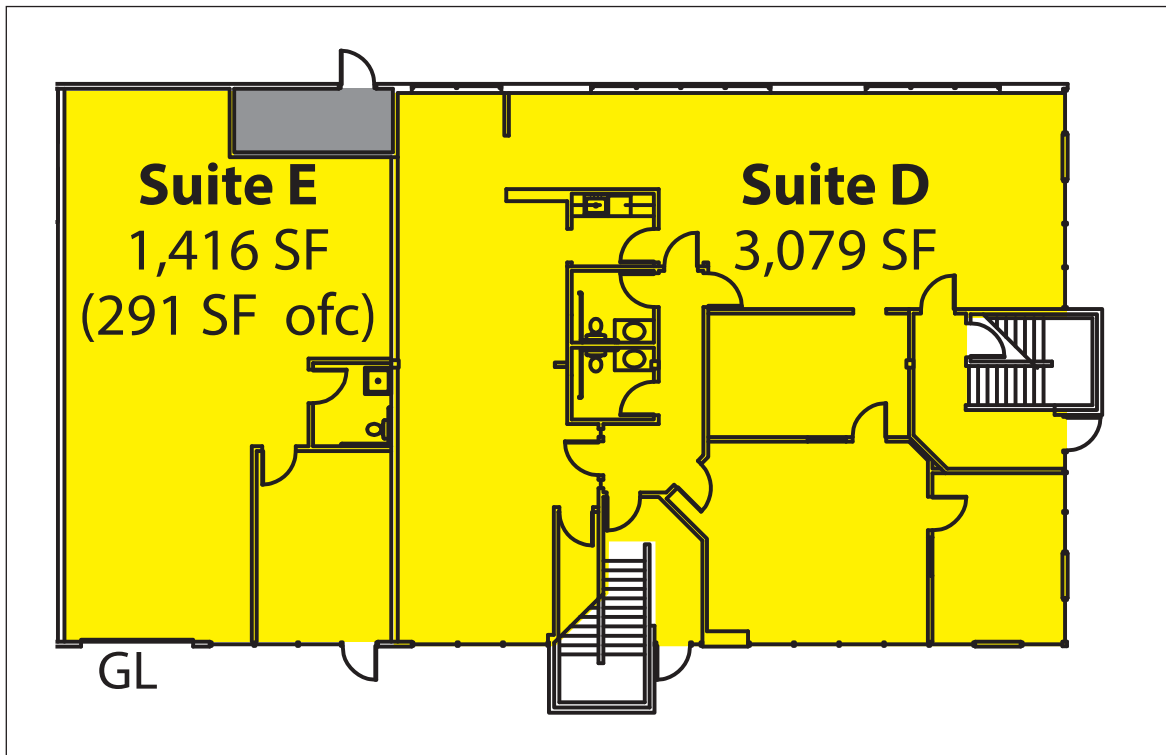
The information provided has been obtained from sources believed reliable. While we do not doubt its accuracy, we have not verified and make no guarantee, warranty or representation about it. It is your sole responsibility to independently confirm its accuracy and completeness.

# LYNNWOOD BUSINESS CENTER

19231 36th Avenue W, Lynnwood, WA 98036



Suites D & E: 4,495 SF Total



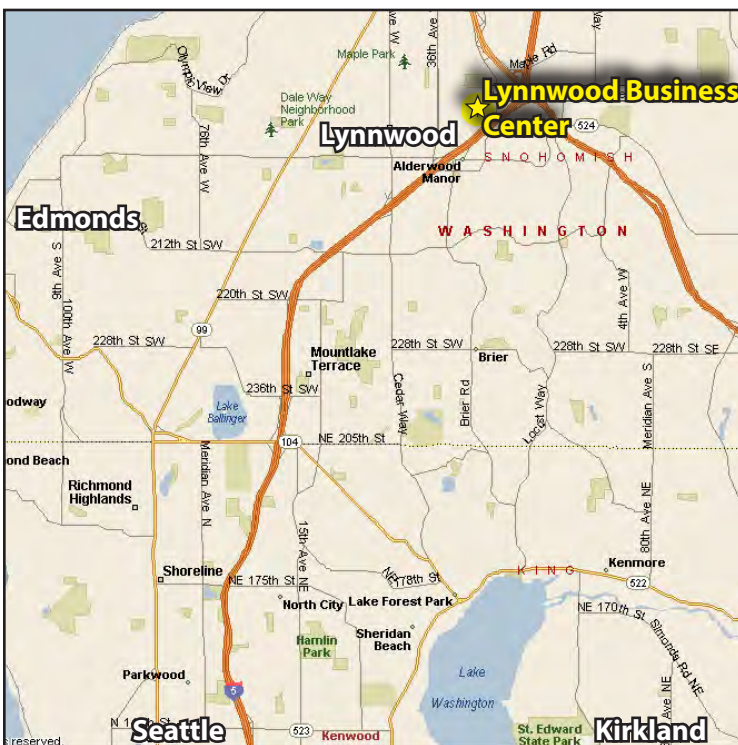
Rosen-Harbottle Commercial Real Estate | P.O. Box 5003 Bellevue, WA 98009-5003  
phone: (425) 454-3030 fax: (425) 454-6705 | [www.rosenharbottle.com](http://www.rosenharbottle.com)

The information provided has been obtained from sources believed reliable. While we do not doubt its accuracy, we have not verified and make no guarantee, warranty or representation about it. It is your sole responsibility to independently confirm its accuracy and completeness.



# LYNNWOOD BUSINESS CENTER

19231 36th Avenue W, Lynnwood, WA 98036



For more information, contact:

**ROSEN-HARBOTTLE  
COMMERCIAL REAL ESTATE**

**Caleb Farnworth, CCIM**

(425) 289-2235

[calebf@rosenharbottle.com](mailto:calebf@rosenharbottle.com)

[www.rosenharbottle.com](http://www.rosenharbottle.com)

Rosen-Harbottle Commercial Real Estate | P.O. Box 5003 Bellevue, WA 98009-5003  
phone: (425) 454-3030 fax: (425) 454-6705 | [www.rosenharbottle.com](http://www.rosenharbottle.com)

The information provided has been obtained from sources believed reliable. While we do not doubt its accuracy, we have not verified and make no guarantee, warranty or representation about it. It is your sole responsibility to independently confirm its accuracy and completeness.