

# MEADOW CREEK OFFICE PARK

22500-22619 SE 64<sup>th</sup> Place, Issaquah, WA 98027



## CLASS A OFFICE / MEDICAL SPACE

**1,612 SF - 2,735 SF Available**

**\$29.00/SF, NNN - MEDICAL**

**\$24.00/SF, NNN - OFFICE**

### FEATURES:

- Minutes from Costco Headquarters
- Class A Finishes
- Amazing Location off I-90 at Front St./E Lake Sammamish Pkwy
- Nearby Amenities Include Retailers, Grocers, Restaurants, Hospital & Parks
- Private Balcony & Free Surface Parking
- Park-Like, Campus Setting

For more information, contact:

**ROSEN~HARBOTTLE  
COMMERCIAL REAL ESTATE**

**Brian Stewart**

(425) 289-2222

[brians@rosenharbottle.com](mailto:brians@rosenharbottle.com)

[www.rosenharbottle.com](http://www.rosenharbottle.com)

Rosen~Harbottle Commercial Real Estate | P.O. Box 5003 Bellevue, WA 98009-5003  
phone: (425) 454-3030 fax: (425) 454-6705 | [www.rosenharbottle.com](http://www.rosenharbottle.com)

The information provided has been obtained from sources believed reliable. While we do not doubt its accuracy, we have not verified and make no guarantee, warranty or representation about it. It is your sole responsibility to independently confirm its accuracy and completeness.

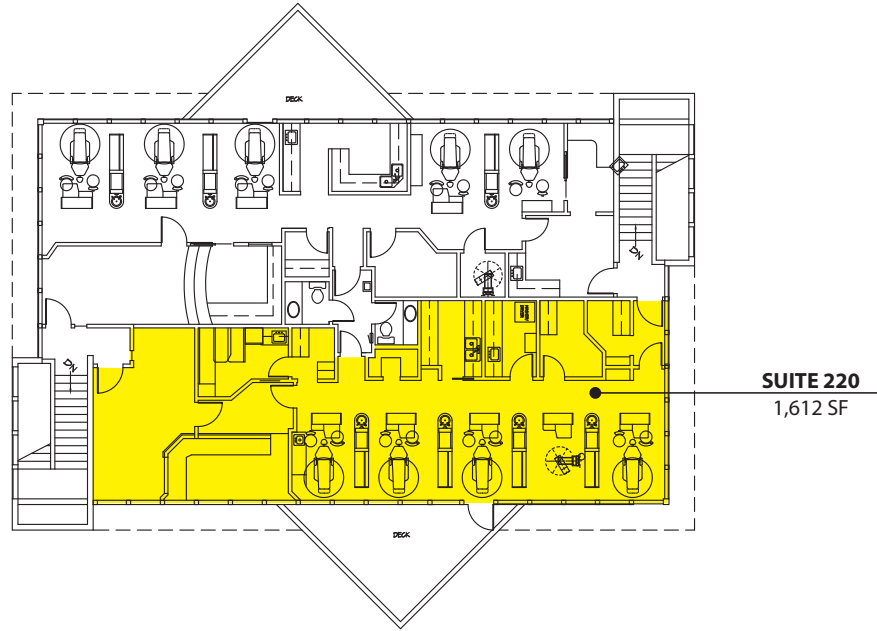
# MEADOW CREEK OFFICE PARK

22500-22619 SE 64<sup>th</sup> Place, Issaquah, WA 98027

## Building B - Second Floor

<b>SUITE</b>	<b>SF</b>
Suite 220	1,612 SF

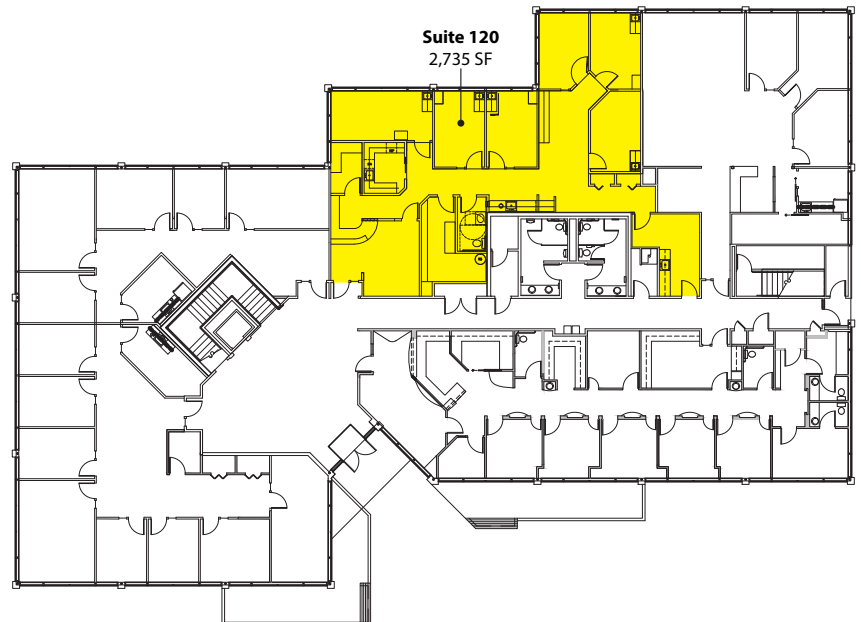
Notes: Full Dental Build Out  
Available 9/1/2016



## Building G - First Floor

<b>SUITE</b>	<b>SF</b>
Suite 120	2,735 SF

Notes: Extensive Medical Build Out  
Available with 60 days notice



Floor plans as shown are not to scale.

Rosen~Harbottle Commercial Real Estate | P.O. Box 5003 Bellevue, WA 98009-5003  
phone: (425) 454-3030 fax: (425) 454-6705 | [www.rosenharbottle.com](http://www.rosenharbottle.com)

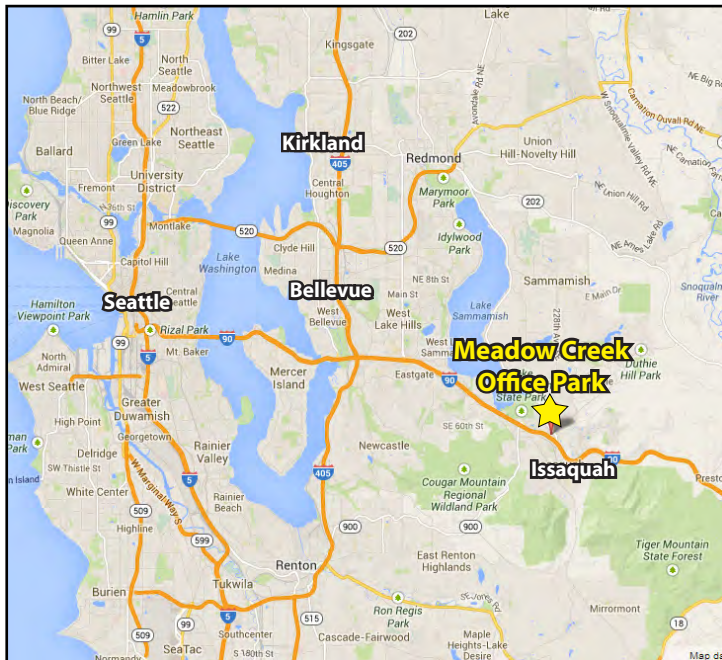
The information provided has been obtained from sources believed reliable. While we do not doubt its accuracy, we have not verified and make no guarantee, warranty or representation about it. It is your sole responsibility to independently confirm its accuracy and completeness.





# MEADOW CREEK OFFICE PARK

22500-22619 SE 64<sup>th</sup> Place, Issaquah, WA 98027



For more information, contact:

**ROSEN~HARBOTTLE  
COMMERCIAL REAL ESTATE**

**Brian Stewart**

(425) 289-2222

brians@rosenharbottle.com

www.rosenharbottle.com

Rosen~Harbottle Commercial Real Estate | P.O. Box 5003 Bellevue, WA 98009-5003  
phone: (425) 454-3030 fax: (425) 454-6705 | www.rosenharbottle.com

The information provided has been obtained from sources believed reliable. While we do not doubt its accuracy, we have not verified and make no guarantee, warranty or representation about it. It is your sole responsibility to independently confirm its accuracy and completeness.