

WHSE/FLEX
LEASE

Available



MILITARY ROAD S BUILDING

8300 Military Road S | Seattle, WA

Jack Rosen

425.289.2221

jack@rosenharbottle.com

425.454.3030
rosenharbottle.com

PO Box 5003
Bellevue, WA 98009 - 5003





LAST SPACE AVAILABLE WAREHOUSE/FLEX SPACE IN SOUTH SEATTLE

5,177 SF Available

\$0.95/SF, NNN

FEATURES:

- Air Conditioning Throughout
- Visibility to I-5
- 3-Phase Power
- Ample Parking
- Storage Available

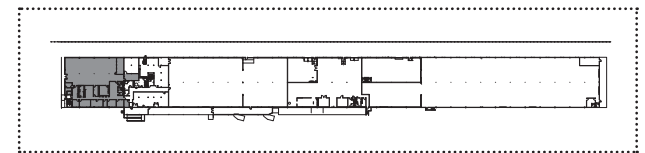
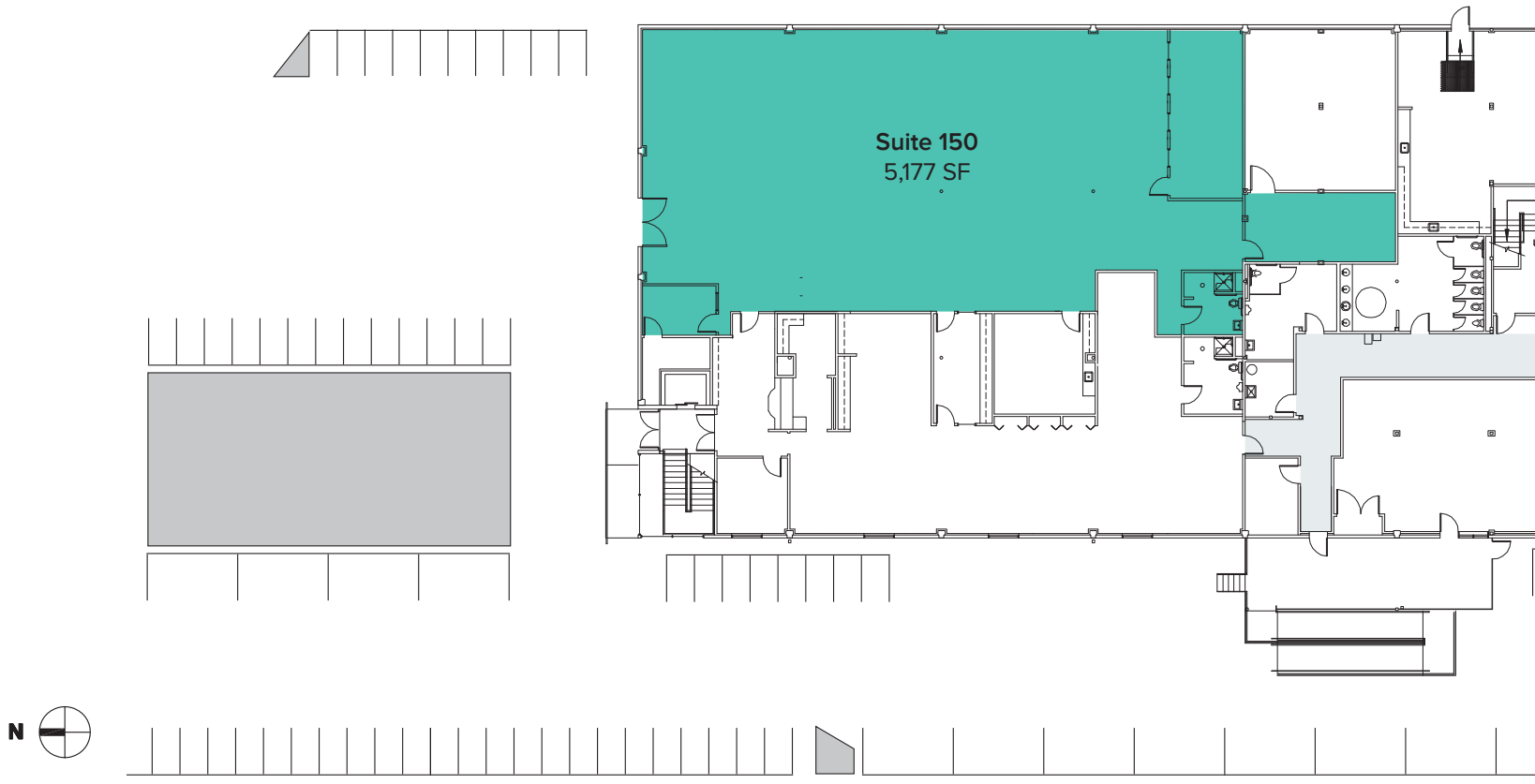
IDEAL USES

- Server Farm
- Tech Startups
- Data Center
- Light Industrial



The information provided herein has been obtained from sources believed to be reliable, but no representation or warranty, express or implied, is made with respect to the accuracy or completeness of any such information. Each prospective buyer or tenant should independently investigate, evaluate and verify all information provided herein and any other matters deemed material. Please consult your attorney, tax advisor or other professional advisor. The terms of sale or lease set forth herein are subject to change or withdrawal at any time and without notice.

SITE PLAN



The information provided herein has been obtained from sources believed to be reliable, but no representation or warranty, express or implied, is made with respect to the accuracy or completeness of any such information. Each prospective buyer or tenant should independently investigate, evaluate and verify all information provided herein and any other matters deemed material. Please consult your attorney, tax advisor or other professional advisor. The terms of sale or lease set forth herein are subject to change or withdrawal at any time and without notice.

LOCATION MAP



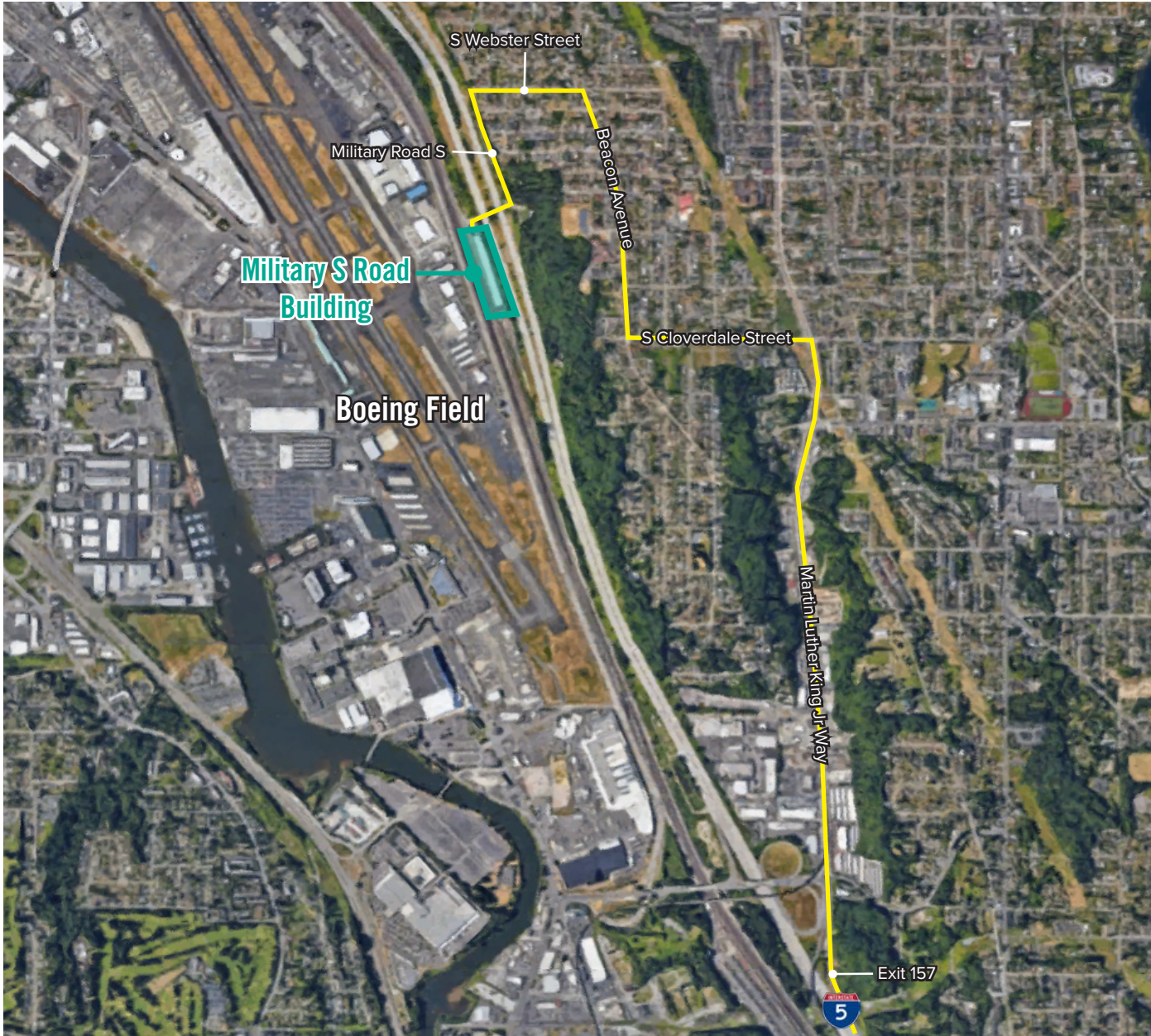
LOCATION MAP



DIRECTION FROM I-5 NORTH

- Take exit 161 for Albro Place toward Swift Ave
- Left on S Albro Place
- Right on Swift Ave S
- Continue onto S Myrtle Street
- Right onto Beacon Ave S
- Right onto Webster St
- Continue onto 29th Ave S
- Continue onto Military Road S
- Military Road S Building is located on the Left

LOCATION MAP



DIRECTION FROM I-5 SOUTH

- Take exit 157 for Martin Luther King Jr Way S
- Left onto S Cloverdale Street
- Right onto Beacon Avenue S
- Left onto S Webster Road
- Continue onto Military Road S
- Continue onto S Rose Street
- Military Road S Building is located on the Left