

**INDUSTRIAL
LEASE**



EASTLAKE BUSINESS PARK, Buildings B, D & E
18336-18398 Redmond-Fall City Road | Redmond, WA 98052

Caleb Farnworth, CCIM

425.289.2235

calebf@rosenharbottle.com

425.454.3030
rosenharbottle.com

PO Box 5003
Bellevue, WA 98009 - 5003





EASTSIDE INDUSTRIAL SPACES WITH OFFICE

1,376 SF - 2,200 SF Available

PROPERTY DETAILS:

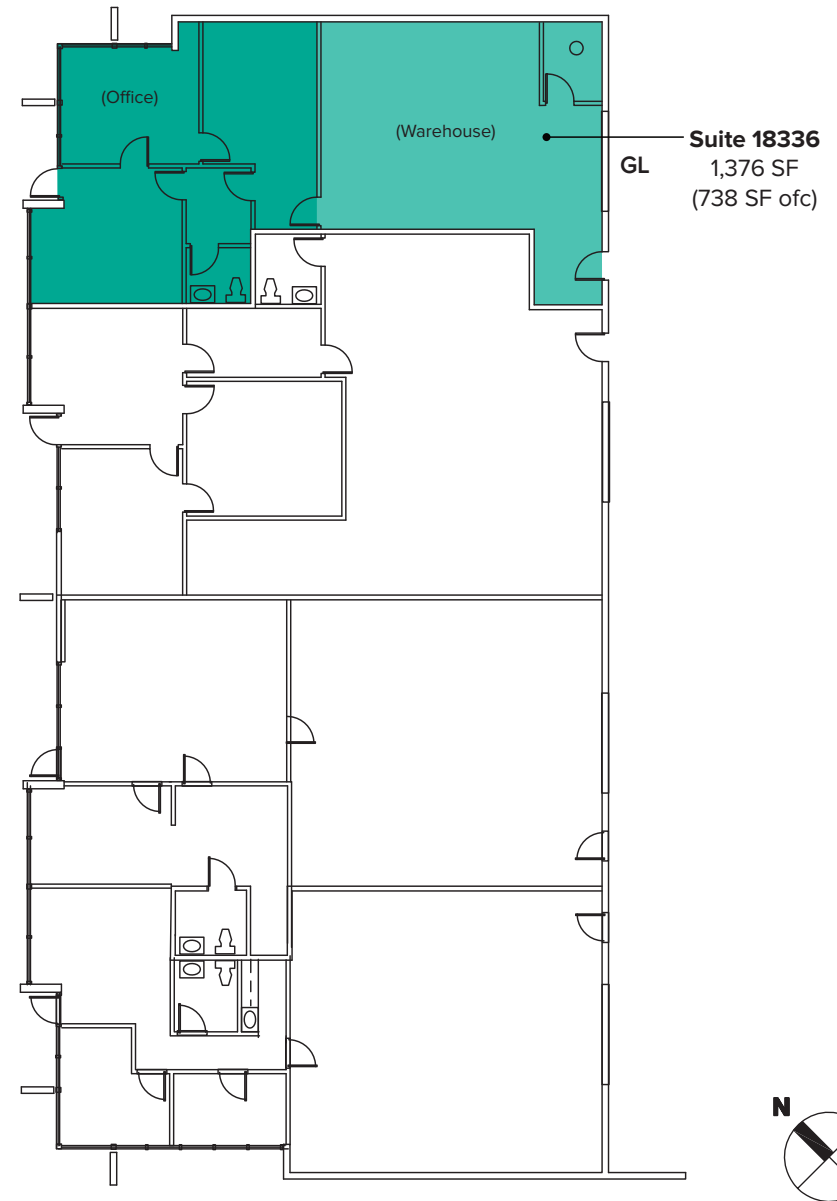
- Professional, Business Park Setting
- Quick Access to SR 520, Union Hill & Downtown Redmond
- Nearby Amenities Include Home Depot, Whole Foods, Chipotle, Target, Kohl's, Costco & More
- Located Minutes From Future Light Rail Stations

The information provided herein has been obtained from sources believed to be reliable, but no representation or warranty, express or implied, is made with respect to the accuracy or completeness of any such information. Each prospective buyer or tenant should independently investigate, evaluate and verify all information provided herein and any other matters deemed material. Please consult your attorney, tax advisor or other professional advisor. The terms of sale or lease set forth herein are subject to change or withdrawal at any time and without notice.

BUILDING B FLOOR PLAN

SUITE 18336 FEATURES

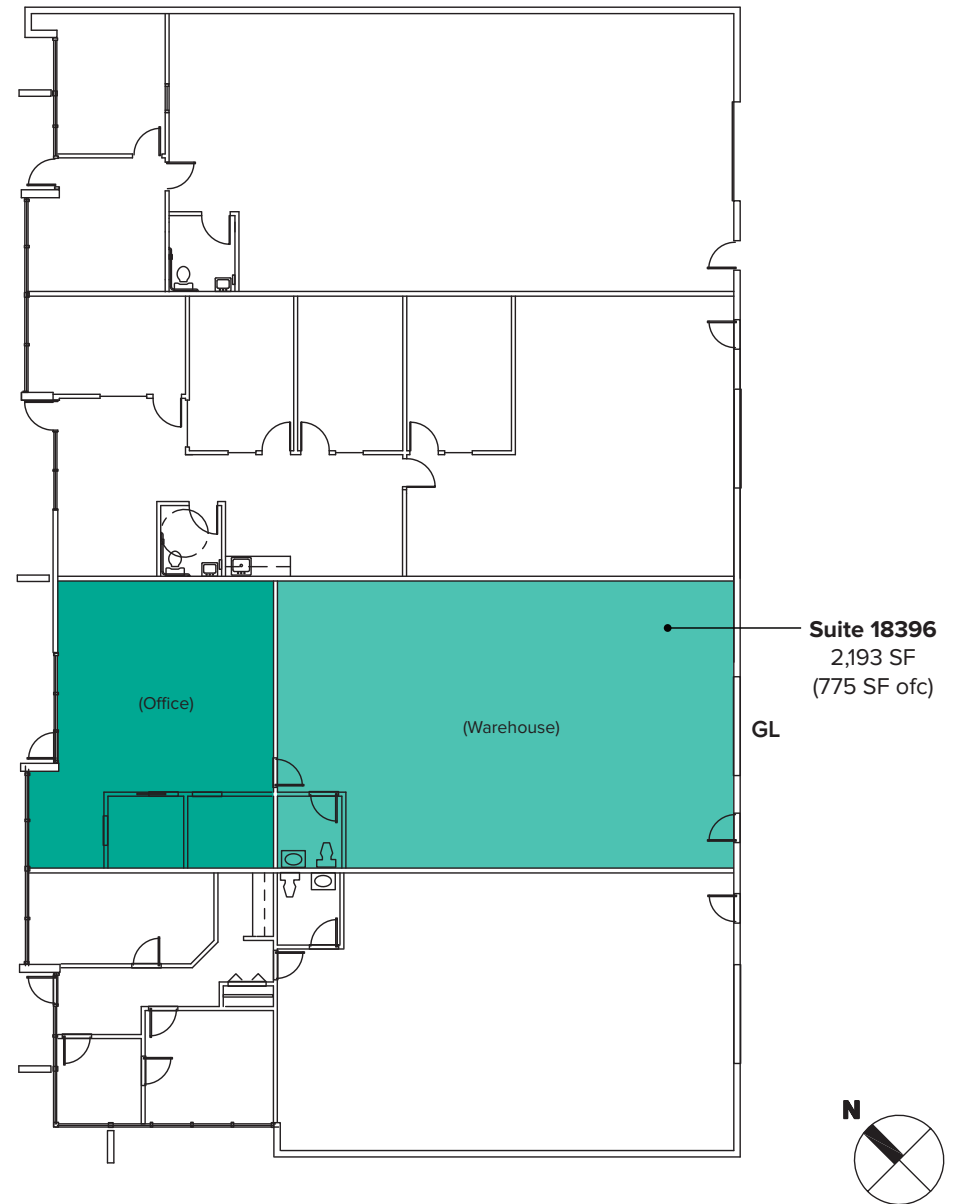
- Available 8/1/2022
- 1,376 SF (738 SF ofc)
- \$1.50/SF, NNN
- Industrial space
- Front office area
- 2 Private rooms located in office area
- 1 Restroom
- 1 Grade-Level Roll-up Loading Door
- 14' - 16' Clear Height in Warehouse



BUILDING D FLOOR PLAN

SUITE 18396 FEATURES

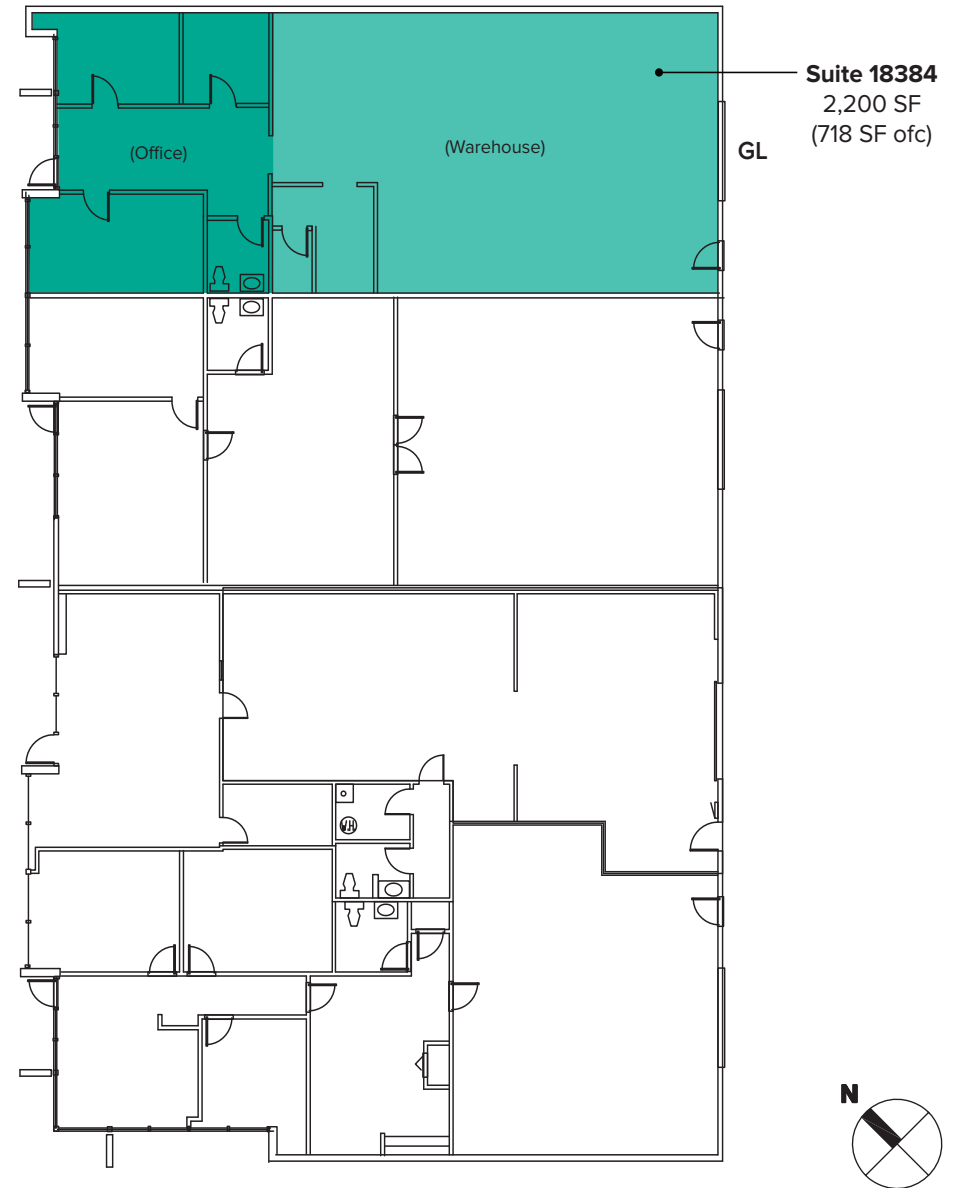
- Available 7/1/2022
- 2,193 SF (775 SF ofc)
- \$1.50/SF, NNN
- Industrial space
- Open front office area
- 2 Private rooms located in office area
- 1 Restroom
- 1 Grade-Level Roll-up Loading Door
- 14' - 16' Clear Height in Warehouse



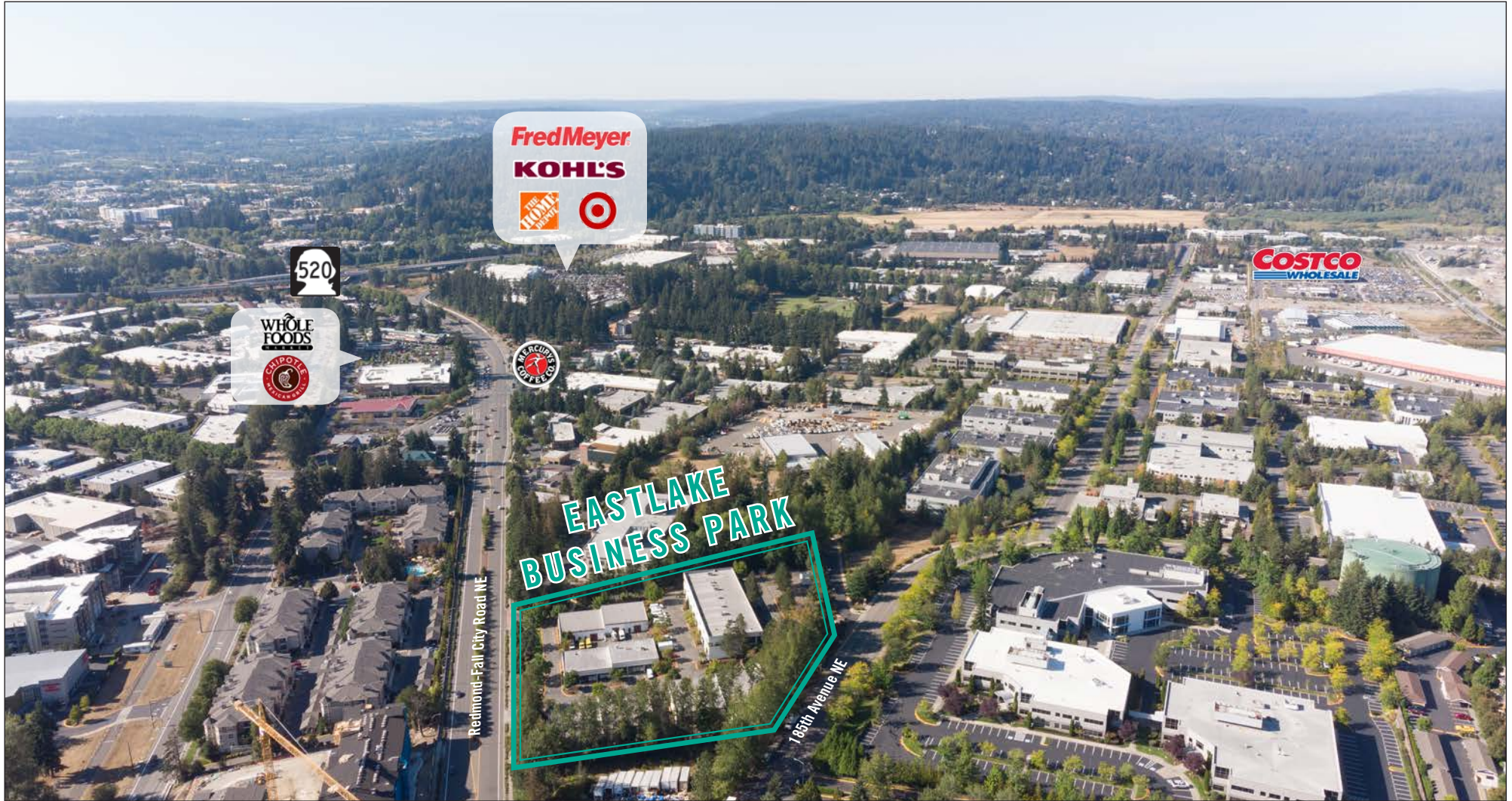
BUILDING E FLOOR PLAN

SUITE 18384 FEATURES

- Available Now
- 2,200 SF (718 SF ofc)
- \$3,000/Month, NNN
- Industrial space
- Front office area
- 3 Private offices
- 1 Restroom
- 1 Grade-Level Roll-up Loading Door
- 14' - 16' Clear Height in Warehouse



LOCATION MAP



LOCATION MAP

