

LYNNWOOD BUSINESS CENTER

19231 36th Avenue W, Lynnwood, WA 98036

CAN'T BEAT LOCATION!



Creative Office Space Near Alderwood Mall

1,402 SF - 3,047 SF Available

Suite	Total SF	Rent/Mo	Available
B-201	1,645 SF	\$2,742	Now
B-202	1,402 SF	\$2,337	Now
Contiguous	3,047 SF	\$5,078	Now

FEATURES:

- Efficient Floor Plans
- Quick Access to I-5, I-405 & Hwy 99
- Building Signage
- Floor to Ceiling Windows - Great Natural Light
- Near Convention Center & Alderwood Mall Amenities
- Comcast & Frontier High-Speed Internet Available

Rosen-Harbottle Commercial Real Estate | P.O. Box 5003 Bellevue, WA 98009-5003
phone: (425) 454-3030 fax: (425) 454-6705 | www.rosenharbottle.com

The information provided has been obtained from sources believed reliable. While we do not doubt its accuracy, we have not verified and make no guarantee, warranty or representation about it. It is your sole responsibility to independently confirm its accuracy and completeness.



For more information, contact:

**ROSEN~HARBOTTLE
COMMERCIAL REAL ESTATE**

Caleb Farnworth, CCIM
(425) 289-2235
calebf@rosenharbottle.com

www.rosenharbottle.com

LYNNWOOD BUSINESS CENTER

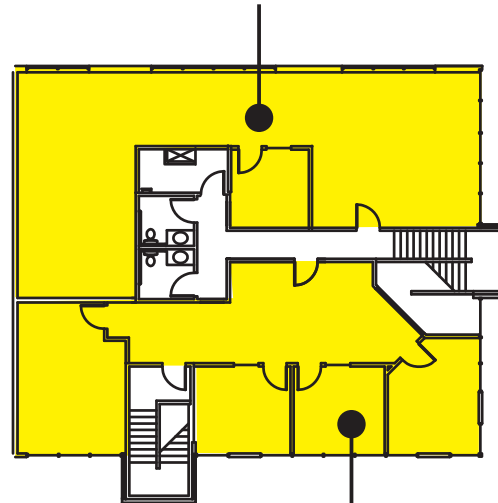
19231 36th Avenue W, Lynnwood, WA 98036

Second Floor - Office Space

Suite	SF	Available
B-201	1,645	Now
B-202	1,402	Now
Contiguous	3,047	Now

SUITE B-201

1,645 SF



SUITE B-202

1,402 SF

For more information, contact:

**Rosen-Harbottle
Commercial Real Estate**

Caleb Farnworth, CCIM
(425) 289-2235
calebf@rosenharbottle.com

www.rosenharbottle.com



Rosen-Harbottle Commercial Real Estate | P.O. Box 5003 Bellevue, WA 98009-5003
phone: (425) 454-3030 fax: (425) 454-6705 | www.rosenharbottle.com

The information provided has been obtained from sources believed reliable. While we do not doubt its accuracy, we have not verified and make no guarantee, warranty or representation about it. It is your sole responsibility to independently confirm its accuracy and completeness.