

MILL CREEK CLINIC

15808 Mill Creek Boulevard, Mill Creek, WA 98012



For more information, contact:

**ROSEN~HARBOTTLE
COMMERCIAL REAL ESTATE**

Jack Rosen

(425) 289-2221

jack@rosenharbottle.com

Brian Stewart

(425) 289-2222

brians@rosenharbottle.com

www.rosenharbottle.com

Office/Medical For Lease

1,901 SF Available

\$20.00/SF, NNN

FEATURES:

- Fully Built Out Medical Space Ready for Occupancy
- New Exterior Paint
- Located in Mill Creek CBD
- 5.2/1,000 Parking Ratio
- Quick Access to I-5 & Bothell-Everett Hwy
- Abundant Nearby Amenities: North Creek Trail, Mill Creek Town Center, Grocery, Restaurants, Shopping

Rosen~Harbottle Commercial Real Estate | P.O. Box 5003 Bellevue, WA 98009-5003
phone: (425) 454-3030 fax: (425) 454-6705 | www.rosenharbottle.com

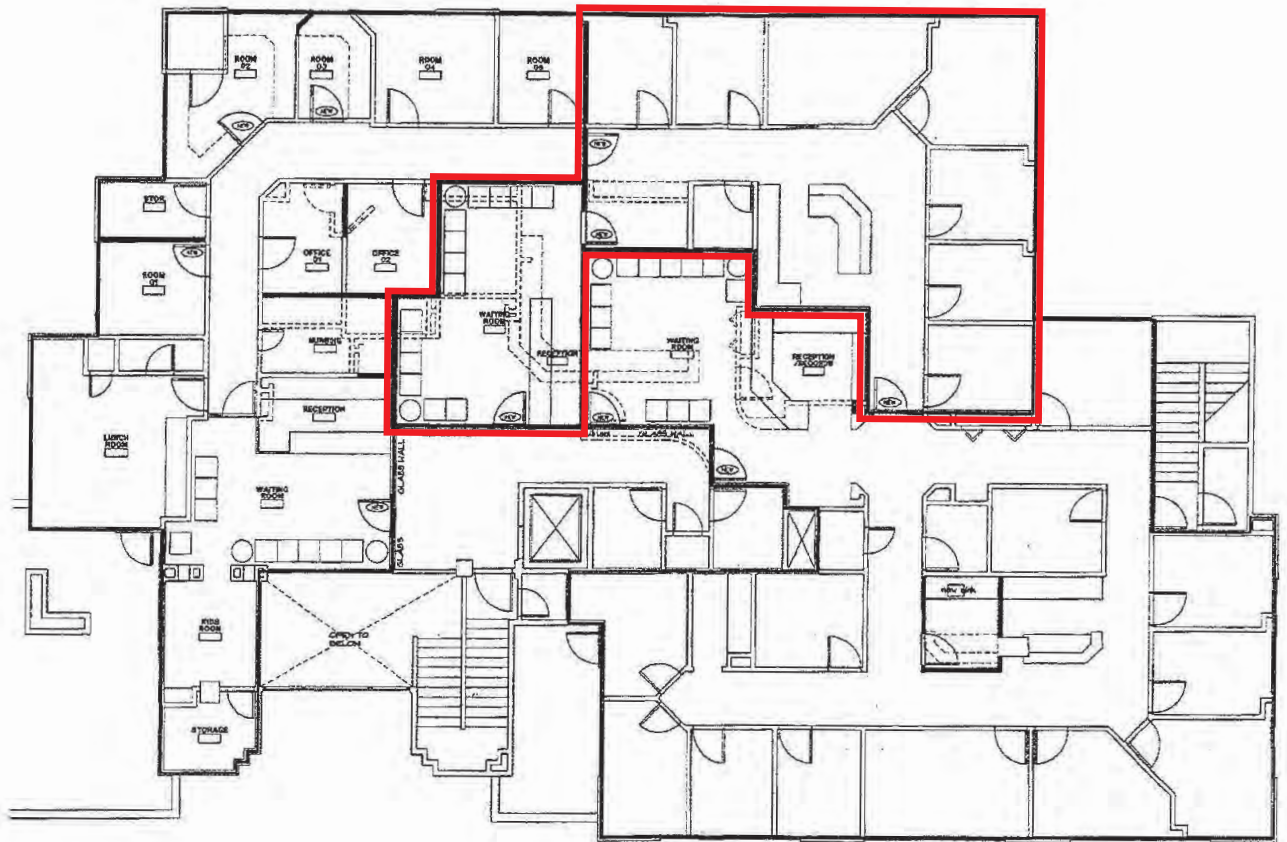
The information provided has been obtained from sources believed reliable. While we do not doubt its accuracy, we have not verified and make no guarantee, warranty or representation about it. It is your sole responsibility to independently confirm its accuracy and completeness.

MILL CREEK CLINIC

15808 Mill Creek Boulevard, Mill Creek, WA 98012

SECOND FLOOR

Suite 202
1,901 SF



Extensive medical build out and plumbing throughout

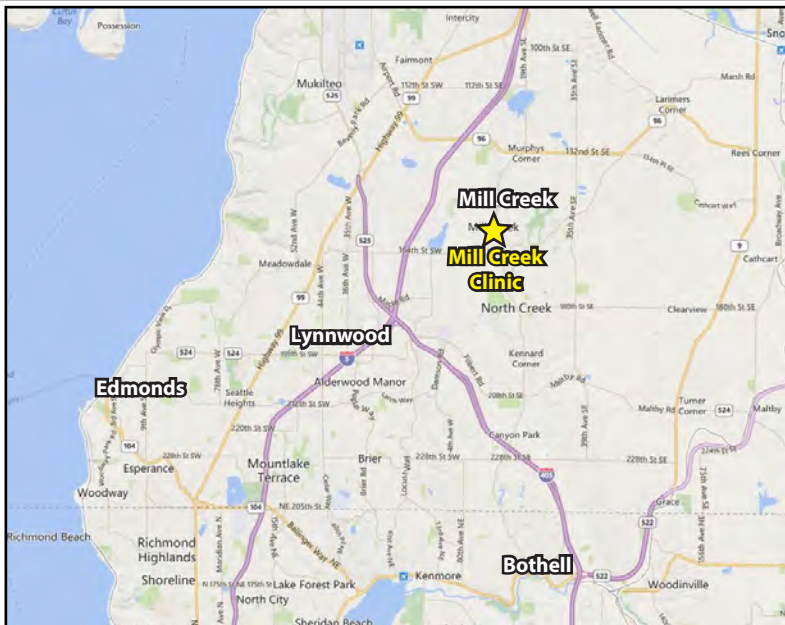
Rosen~Harbottle Commercial Real Estate | P.O. Box 5003 Bellevue, WA 98009-5003
phone: (425) 454-3030 fax: (425) 454-6705 | www.rosenharbottle.com

The information provided has been obtained from sources believed reliable. While we do not doubt its accuracy, we have not verified and make no guarantee, warranty or representation about it. It is your sole responsibility to independently confirm its accuracy and completeness.



MILL CREEK CLINIC

15808 Mill Creek Boulevard, Mill Creek, WA 98012



For more information, contact:

**ROSEN~HARBOTTLE
COMMERCIAL REAL ESTATE**

Jack Rosen
(425) 289-2221
jack@rosenharbottle.com

Brian Stewart
(425) 289-2222
brians@rosenharbottle.com

www.rosenharbottle.com

Rosen~Harbottle Commercial Real Estate | P.O. Box 5003 Bellevue, WA 98009-5003
phone: (425) 454-3030 fax: (425) 454-6705 | www.rosenharbottle.com

The information provided has been obtained from sources believed reliable. While we do not doubt its accuracy, we have not verified and make no guarantee, warranty or representation about it. It is your sole responsibility to independently confirm its accuracy and completeness.