

# New Ownership Presents: GATEWAY POINTE BUSINESS PARK

2601-2715 Jahn Avenue NW, Gig Harbor, WA 98335

**BEST PRICES IN GIG HARBOR**



**IDEAL USES: Professional Office/Medical, Showroom,  
Wholesale Retail, Recreational, Winery/Brewery,  
Educational, Salon, Boutique**

**728 SF - 10,380 SF Available**  
**\$12.50 - \$13.50/SF, MODIFIED GROSS**

## **FEATURES:**

- Attractive Architectural Design & Business Park Atmosphere
- Great Visibility to 70,000+ Cars/Day on Hwy 16
- Quick Access to Tacoma - Half Mile from Off-Ramp
- Buildings Include Heating & Air Conditioning
- Tall Ceilings with Sky Lights
- Extensive Window Line Provides Abundant Natural Light
- Buildings Available for Purchase:
  - Building C: \$1,771,000 (\$180/SF)
  - Building D: \$1,771,000 (\$180/SF)
  - Building E: \$1,879,000 (\$180/SF)
  - Building F: \$1,859,000 (\$189/SF)

For more information, contact:

KELLER WILLIAMS

**Mike Armanious, CCIM**

(253) 988-6115

marmanious@kw.com

ROSEN~HARBOTTLE CRE

**Caleb Farnworth, CCIM**

(425) 289-2235

calebf@rosenharbottle.com

Keller Williams | 7525 28th Street W, University Place, WA  
phone: (253) 460-8640 fax: (253) 460-8650 | www.kw.com

The information provided has been obtained from sources believed reliable. While we do not doubt its accuracy, we have not verified and make no guarantee, warranty or representation about it. It is your sole responsibility to independently confirm its accuracy and completeness.

# GATEWAY POINTE BUSINESS PARK

2601-2715 Jahn Avenue NW, Gig Harbor, WA 98335

## Availability

- Click on Suite Number to jump to Floor Plan -

SUITE	SQUARE FEET	CONTIGUOUS	RENT/MO	\$/SF	AVAILABLE
<a href="#">A-04</a>	1,395	2,933	\$1,569	\$13.50	NOW
<a href="#">A-05</a>	1,538	2,933	\$1,730	\$13.50	NOW
<a href="#">A-09</a>	772		\$804	\$12.50	NOW
<a href="#">A-12</a>	729		\$759	\$12.50	NOW
<a href="#">C-01</a>	229		\$258	\$13.50	NOW
<a href="#">C-04</a>	1,391	3,690	\$1,565	\$13.50	NOW
<a href="#">C-07</a>	767	3,690	\$799	\$12.50	NOW
<a href="#">C-10</a>	2,853		\$2,972	\$12.50	NOW
<a href="#">D-01</a>	2,948	8,088	\$3,317	\$13.50	NOW
<a href="#">D-07</a>	2,279	8,088	\$2,564	\$13.50	NOW
<a href="#">D-10</a>	2,861	8,088	\$2,980	\$12.50	NOW
<a href="#">E-01</a>	1,544	6,305	\$1,737	\$13.50	NOW
<a href="#">E-03</a>	774	6,305	\$871	\$13.50	NOW
<a href="#">E-04</a>	1,709	6,305	\$1,923	\$13.50	NOW
<a href="#">E-07</a>	1,514	6,305	\$1,577	\$12.50	NOW
<a href="#">E-08</a>	764	6,305	\$796	\$12.50	NOW
<a href="#">F-04</a>	1,362		\$1,532	\$13.50	NOW
<a href="#">F-10</a>	1,756	2,540	\$1,829	\$12.50	NOW
<a href="#">F-12</a>	784	2,540	\$817	\$12.50	NOW
<a href="#">H-04</a>	2,940		\$3,308	\$13.50	NOW
<b>Full Bldg</b>	<b>10380</b>		<b>\$10,813</b>	<b>\$12.50</b>	<b>60 DAYS</b>

Keller Williams | 7525 28th Street W, University Place, WA  
phone: (253) 460-8640 fax: (253) 460-8650 | www.kw.com

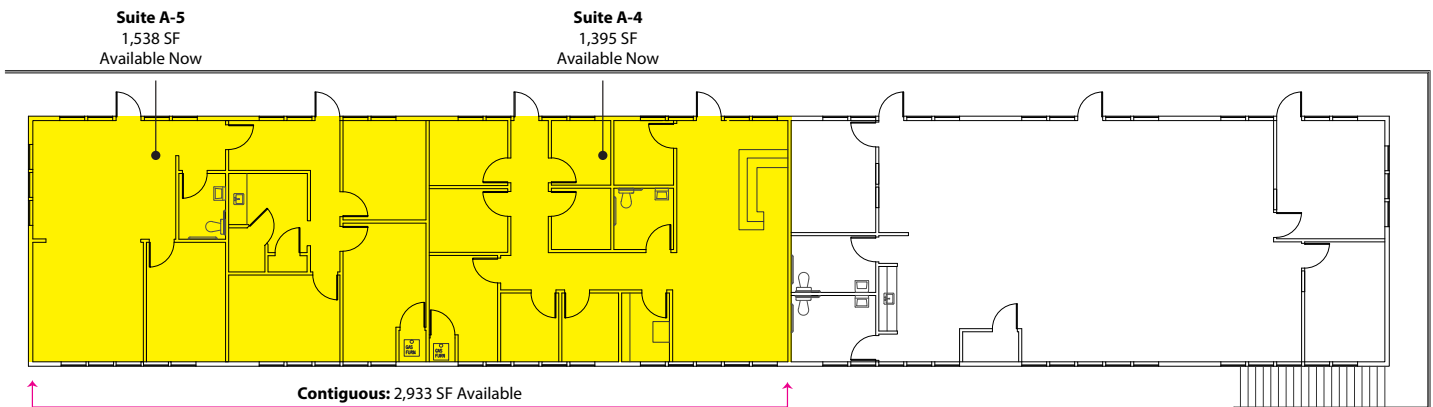
The information provided has been obtained from sources believed reliable. While we do not doubt its accuracy, we have not verified and make no guarantee, warranty or representation about it. It is your sole responsibility to independently confirm its accuracy and completeness.

# GATEWAY POINTE BUSINESS PARK

2601-2715 Jahn Avenue NW, Gig Harbor, WA 98335

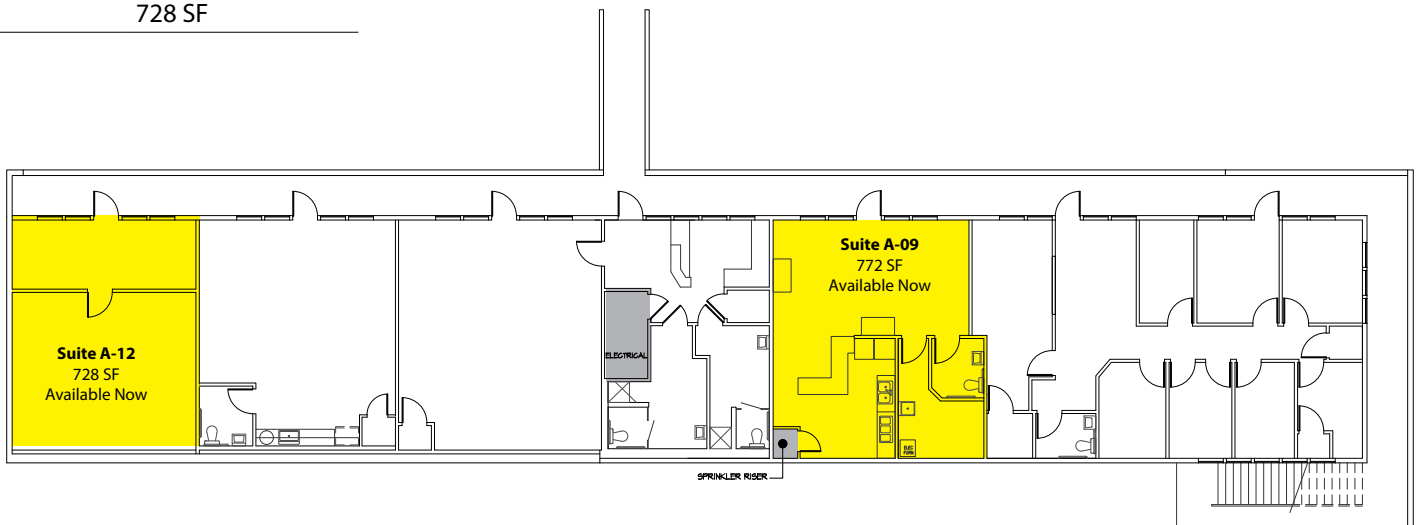
## Building A - 2<sup>nd</sup> Floor

Suite	Square Footage
A-04	1,395 SF
A-05	1,538 SF
Contiguous	2,933 SF



## Building A - 1<sup>st</sup> Floor

Suite	Square Footage
A-09	772 SF
A-12	728 SF



Keller Williams | 7525 28th Street W, University Place, WA  
phone: (253) 460-8640 fax: (253) 460-8650 | [www.kw.com](http://www.kw.com)

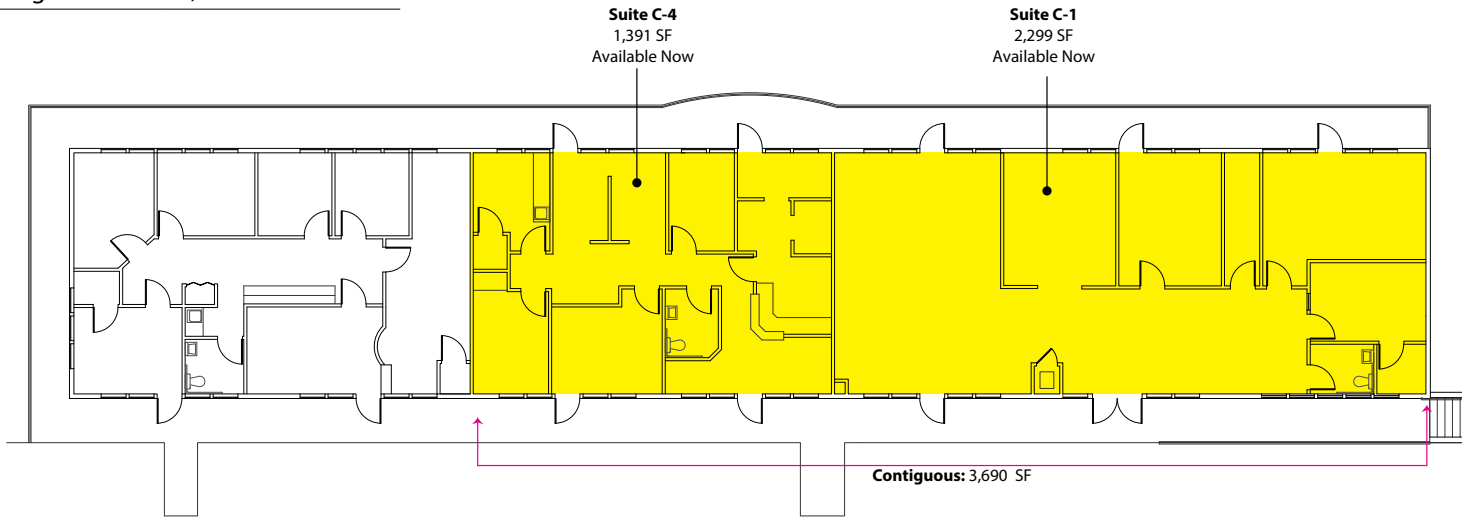
The information provided has been obtained from sources believed reliable. While we do not doubt its accuracy, we have not verified and make no guarantee, warranty or representation about it. It is your sole responsibility to independently confirm its accuracy and completeness.

# GATEWAY POINTE BUSINESS PARK

2601-2715 Jahn Avenue NW, Gig Harbor, WA 98335

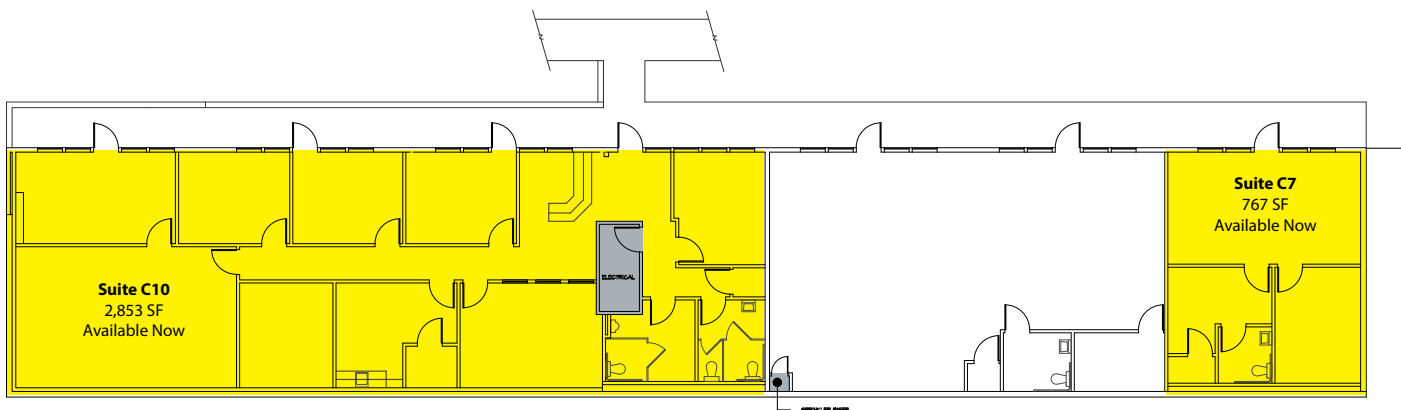
## Building C - 2<sup>nd</sup> Floor

Suite	Square Footage
C-01	2,299 SF
C-04	1,391 SF
Contiguous	3,690 SF



## Building C - 1<sup>st</sup> Floor

Suite	Square Footage
C-07	767 SF
C-10	2,853 SF



Keller Williams | 7525 28th Street W, University Place, WA  
phone: (253) 460-8640 fax: (253) 460-8650 | [www.kw.com](http://www.kw.com)

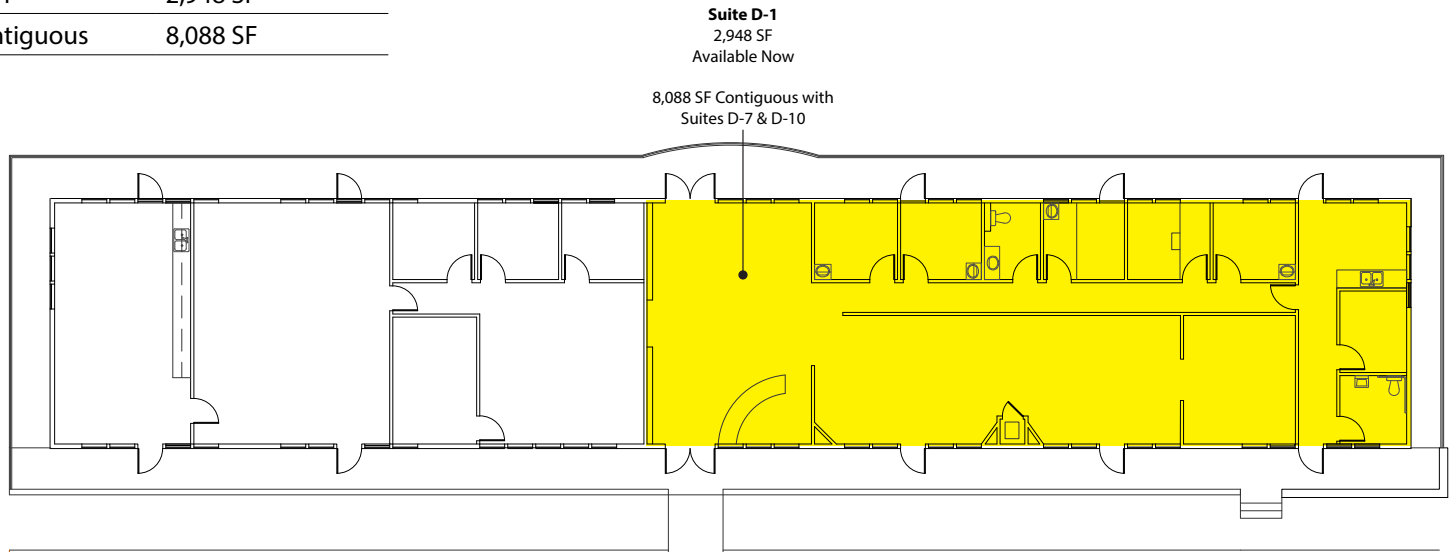
The information provided has been obtained from sources believed reliable. While we do not doubt its accuracy, we have not verified and make no guarantee, warranty or representation about it. It is your sole responsibility to independently confirm its accuracy and completeness.

# GATEWAY POINTE BUSINESS PARK

2601-2715 Jahn Avenue NW, Gig Harbor, WA 98335

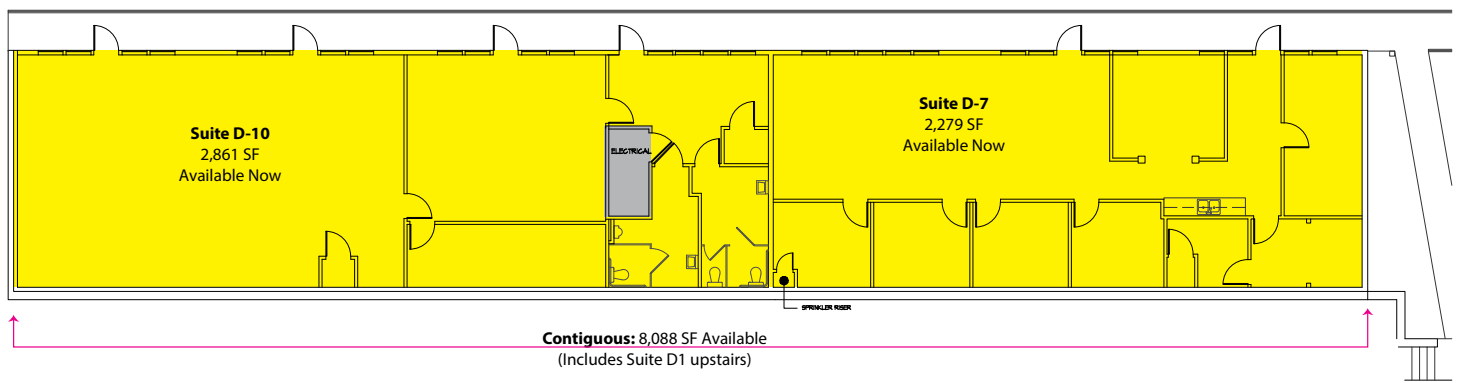
## Building D - 2<sup>nd</sup> Floor

Suite	Square Footage
D-01	2,948 SF
Contiguous	8,088 SF



## Building D - 1<sup>st</sup> Floor

Suite	Square Footage
D-07	2,279 SF
D-10	2,861 SF
Contiguous	5,140 SF - 8,088 SF



Keller Williams | 7525 28th Street W, University Place, WA  
phone: (253) 460-8640 fax: (253) 460-8650 | [www.kw.com](http://www.kw.com)

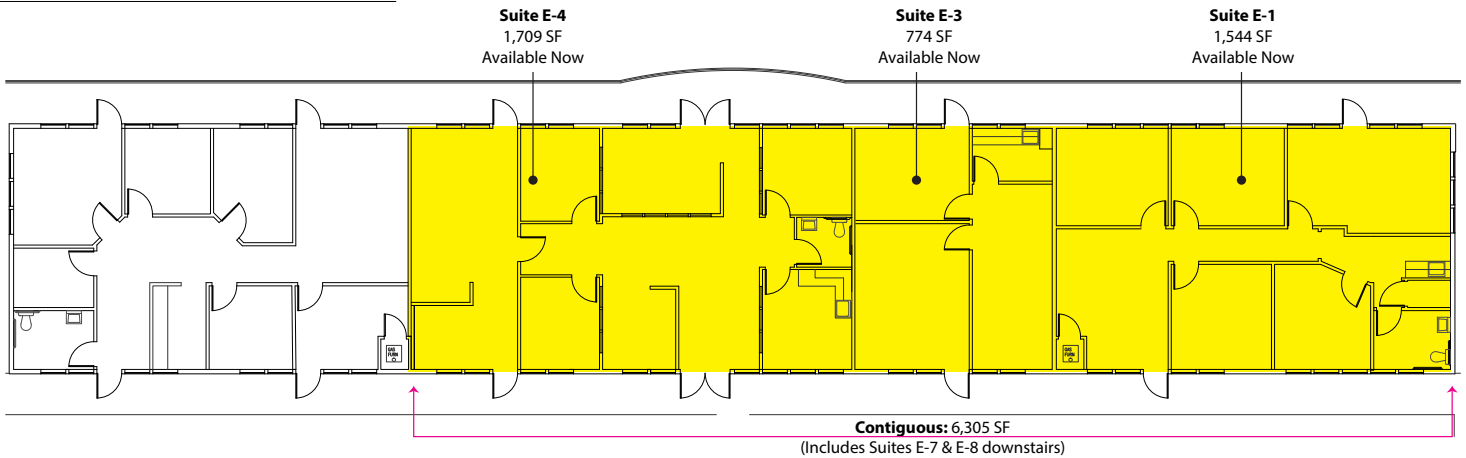
The information provided has been obtained from sources believed reliable. While we do not doubt its accuracy, we have not verified and make no guarantee, warranty or representation about it. It is your sole responsibility to independently confirm its accuracy and completeness.

# GATEWAY POINTE BUSINESS PARK

2601-2715 Jahn Avenue NW, Gig Harbor, WA 98335

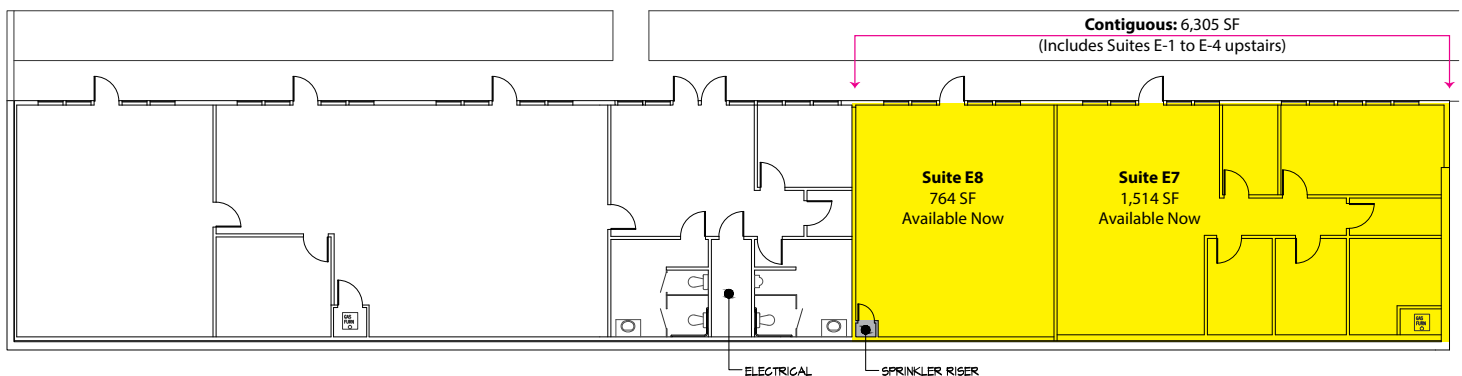
## Building E - 2<sup>nd</sup> Floor

Suite	Square Footage
E-01	1,544 SF
E-03	774 SF
E-04	1,709 SF
Contiguous	4,027 SF - 6,305 SF



## Building E - 1<sup>st</sup> Floor

Suite	Square Footage
E-07	1,514 SF
E-08	764 SF
Contiguous	2,278 SF - 6,305 SF



Keller Williams | 7525 28th Street W, University Place, WA  
 phone: (253) 460-8640 fax: (253) 460-8650 | [www.kw.com](http://www.kw.com)

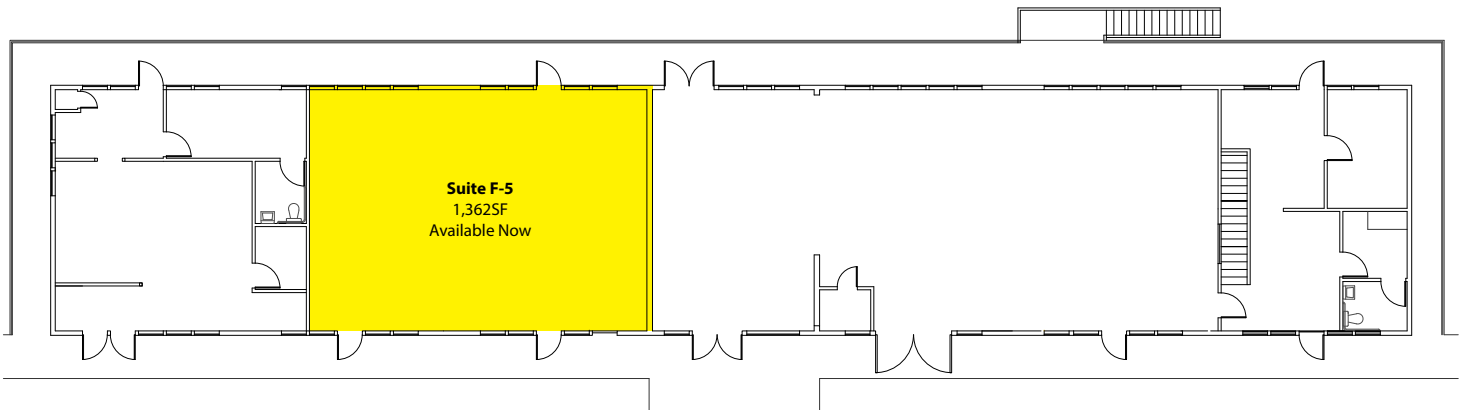
The information provided has been obtained from sources believed reliable. While we do not doubt its accuracy, we have not verified and make no guarantee, warranty or representation about it. It is your sole responsibility to independently confirm its accuracy and completeness.

# GATEWAY POINTE BUSINESS PARK

2601-2715 Jahn Avenue NW, Gig Harbor, WA 98335

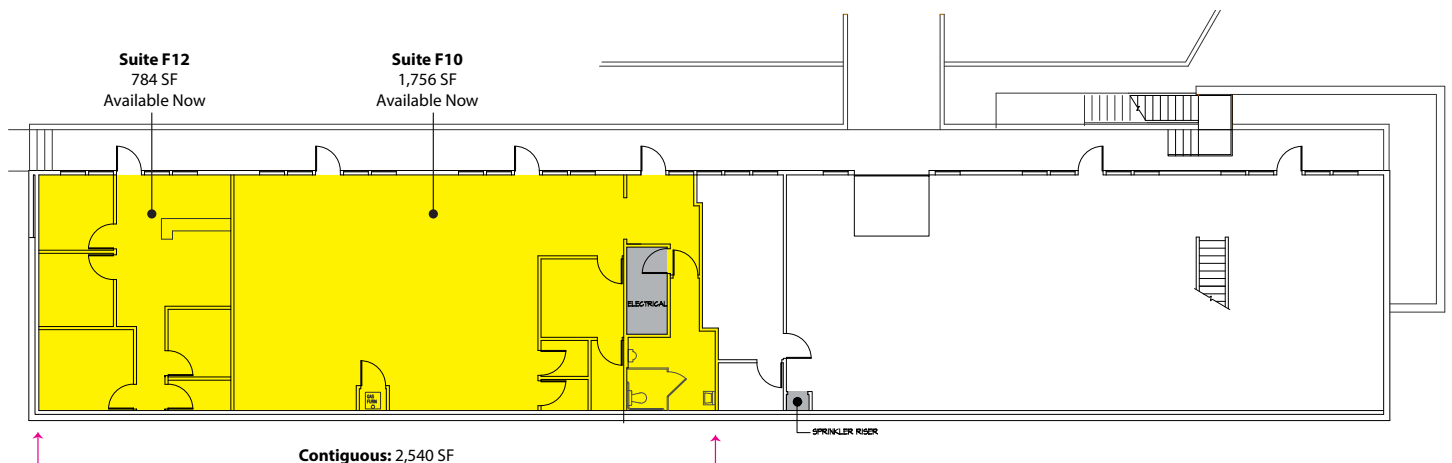
## Building F - 2<sup>nd</sup> Floor

Suite	Square Footage
F-05	1,362 SF



## Building F - 1<sup>st</sup> Floor

Suite	Square Footage
F-10	1,756 SF
F-12	784 SF
Contiguous	2,540 SF



Keller Williams | 7525 28th Street W, University Place, WA  
phone: (253) 460-8640 fax: (253) 460-8650 | [www.kw.com](http://www.kw.com)

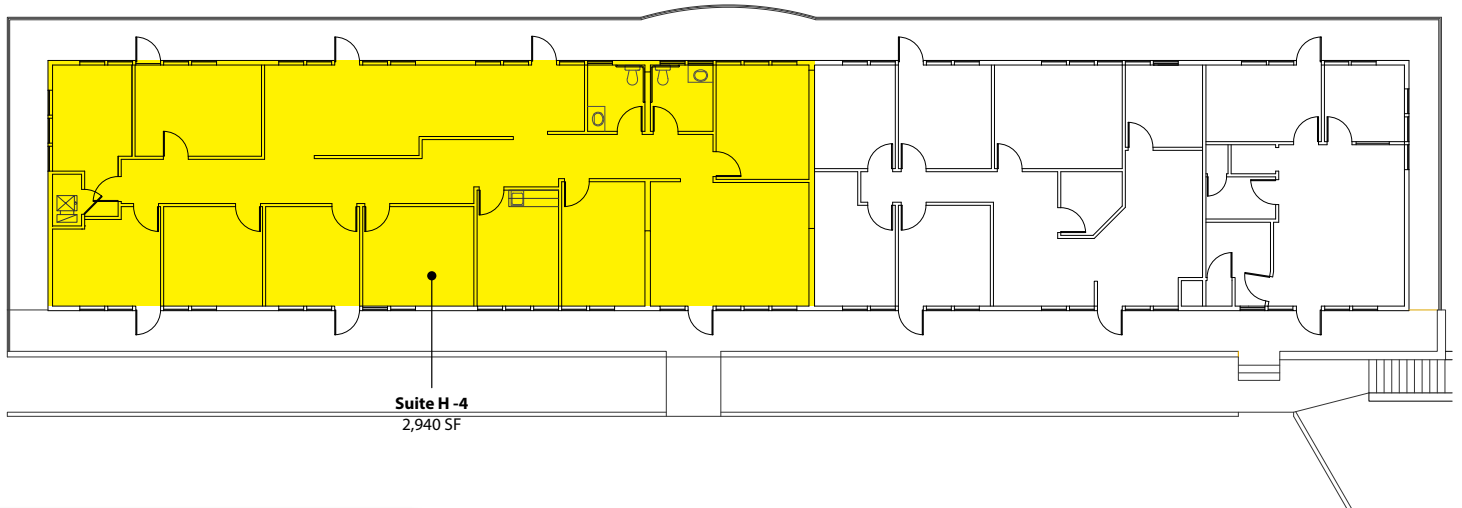
The information provided has been obtained from sources believed reliable. While we do not doubt its accuracy, we have not verified and make no guarantee, warranty or representation about it. It is your sole responsibility to independently confirm its accuracy and completeness.

# GATEWAY POINTE BUSINESS PARK

2601-2715 Jahn Avenue NW, Gig Harbor, WA 98335

## Building H - 2<sup>nd</sup> Floor

Suite	Square Footage
H-04	2,940 SF



## Site Plan



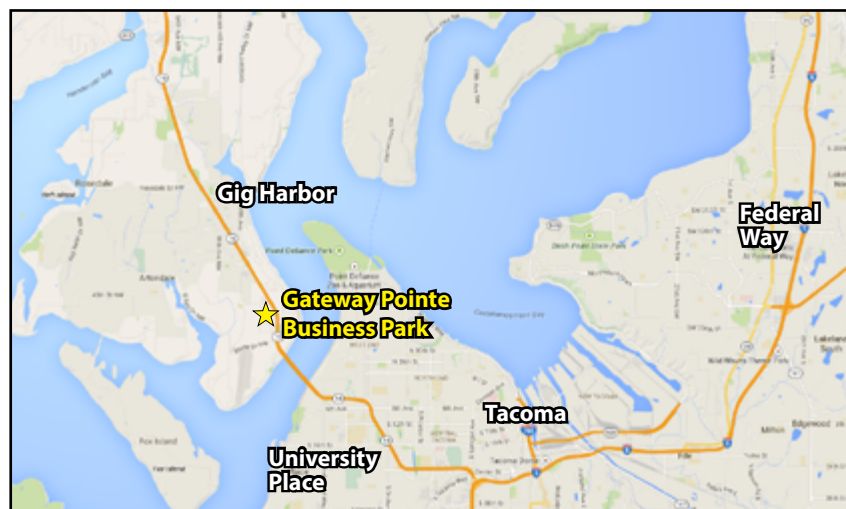
Keller Williams | 7525 28th Street W, University Place, WA  
phone: (253) 460-8640 fax: (253) 460-8650 | [www.kw.com](http://www.kw.com)

The information provided has been obtained from sources believed reliable. While we do not doubt its accuracy, we have not verified and make no guarantee, warranty or representation about it. It is your sole responsibility to independently confirm its accuracy and completeness.



# GATEWAY POINTE BUSINESS PARK

2601-2715 Jahn Avenue NW, Gig Harbor, WA 98335



For more information, contact:

KELLER WILLIAMS

**Mike Armanious, CCIM**

(253) 988-6115

marmanious@kw.com

ROSEN~HARBOTTLE CRE

**Caleb Farnworth, CCIM**

(425) 289-2235

calebf@rosenharbottle.com

Keller Williams | 7525 28th Street W, University Place, WA  
phone: (253) 460-8640 fax: (253) 460-8650 | www.kw.com

The information provided has been obtained from sources believed reliable. While we do not doubt its accuracy, we have not verified and make no guarantee, warranty or representation about it. It is your sole responsibility to independently confirm its accuracy and completeness.