

**OFFICE/WAREHOUSE  
LEASE**

Highway 167 - 93,855 CPD



## **KENT BUSINESS CENTER, BUILDING A**

**25316 - 25530 74th Avenue S | Kent, WA**

**Brian Stewart**

425.289.2222

brians@rosenharbottle.com

**Grant Rubenstein**

425.289.2220

grant@rosenharbottle.com

**Stossi Tsantilas**

425.279.7943

stossit@rosenharbottle.com

425.454.3030  
rosenharbottle.com

PO Box 5003  
Bellevue, WA 98009 - 5003





# HIGH-IMAGE OFFICE/WHSE/ FLEX SPACES AVAILABLE

2,070 SF - 12,771 SF

## LOCATION FEATURES:

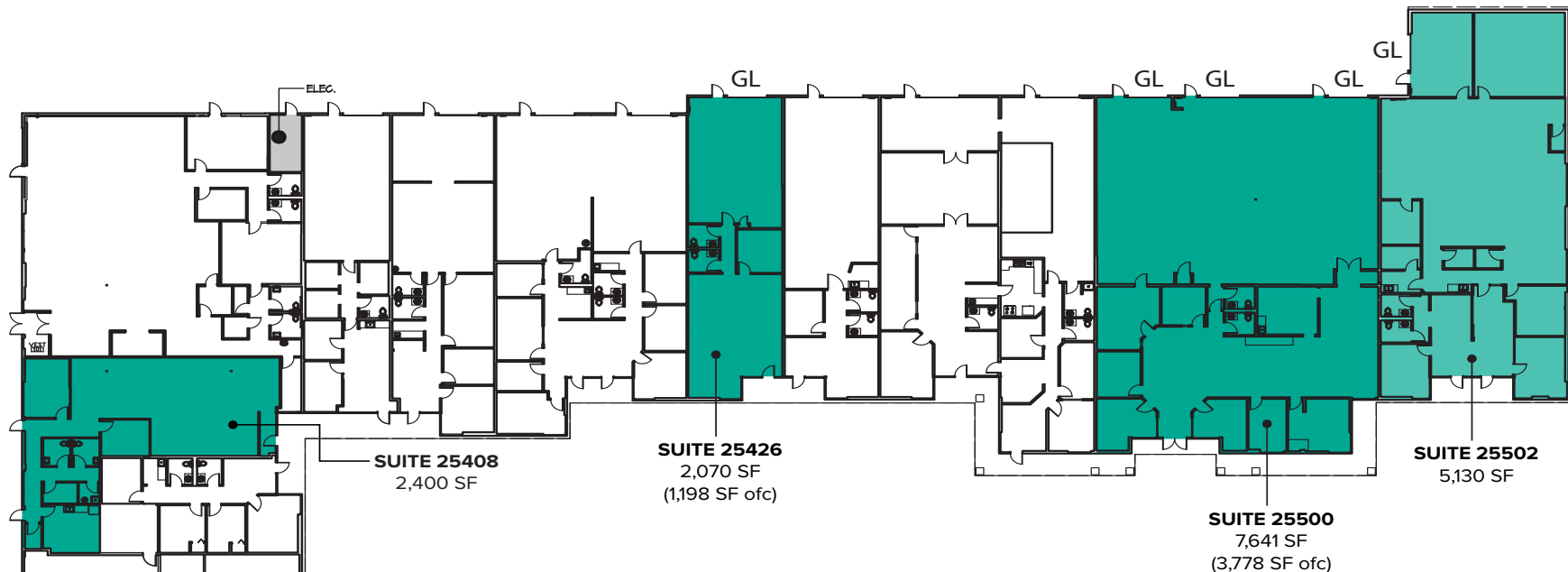
- Landlord Flexible on Office/Warehouse Ratios
- Varying Suite Sizes - Ready to Lease
- Grade-Level Loading Doors
- Direct Entry to Suites
- Quick Access to State Route 167, SR 516 & Downtown
- Close-by Kent Station, Retail and Restaurant Amenities



The information provided herein has been obtained from sources believed to be reliable, but no representation or warranty, express or implied, is made with respect to the accuracy or completeness of any such information. Each prospective buyer or tenant should independently investigate, evaluate and verify all information provided herein and any other matters deemed material. Please consult your attorney, tax advisor or other professional advisor. The terms of sale or lease set forth herein are subject to change or withdrawal at any time and without notice.

# BUILDING A - AS-IS FLOOR PLAN

Suite	Square Feet	Rate	Notes
25408	2,400 SF	Call Agents	Open office space with 3 entrance doors, 2 POs, 2 restrooms, and kitchenette. <b>Available now.</b>
25426	2,070 SF (1,198 SF ofc)	Call Agents	Office/Warehouse space with 1 private office, 2 restrooms, and 1 grade-level roll-up door. <b>Available 10/1/2021.</b>
25500	7,641 SF - 12,771 SF	Call Agents	Office/Warehouse space with 7 private offices, 2 restrooms, break area with kitchenette, open warehouse area, and 3 grade-level roll-up doors. Contiguous with Suite 25502 for a total of 12,771 SF. <b>Landlord flexible on Office/Warehouse ratios.</b>
25502	5,130 SF - 12,771 SF	Call Agents	End cap Tech/Flex space with drop ceiling and HVAC throughout. Suite includes several private offices, 2 restrooms, reception area, open warehouse area, and 1 grade-level roll-up door. Contiguous with Suite 25500 for a total of 12,771 SF. <b>Landlord flexible on Office/Warehouse ratios.</b>



Contiguous 12,771 SF (8,908 SF ofc)

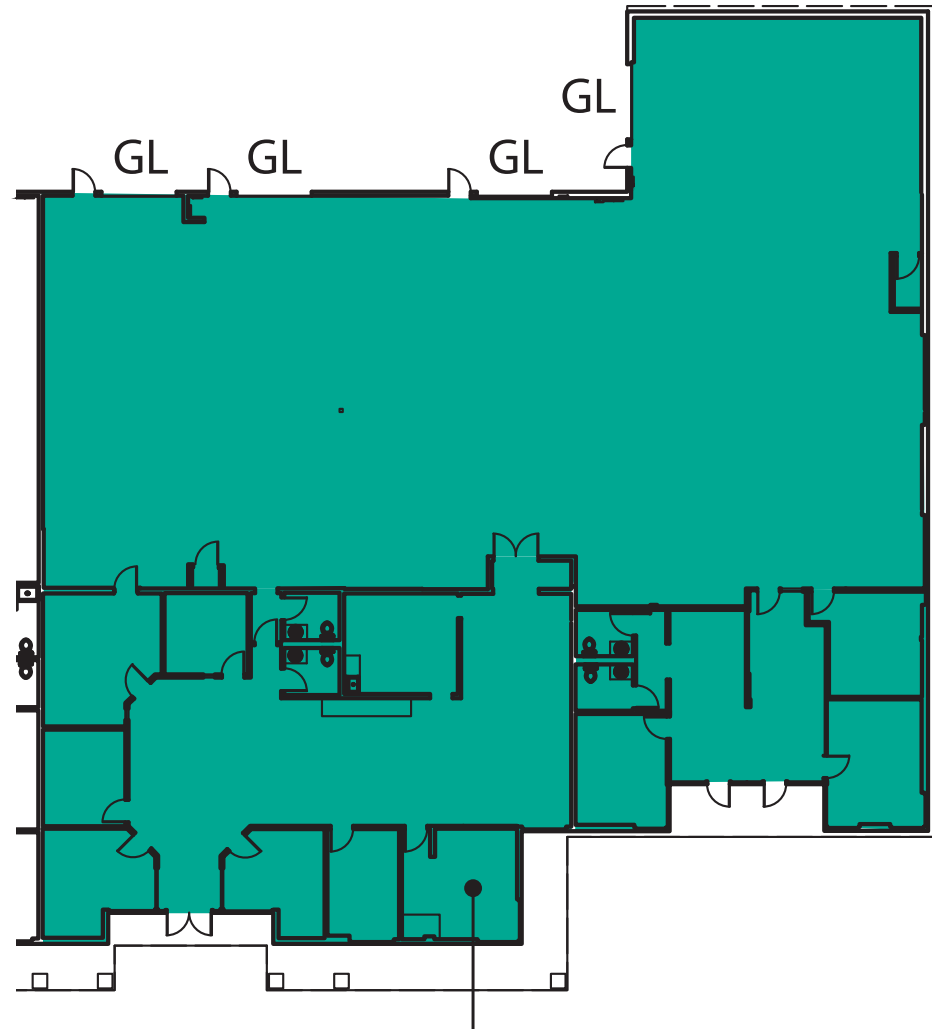
The information provided herein has been obtained from sources believed to be reliable, but no representation or warranty, express or implied, is made with respect to the accuracy or completeness of any such information. Each prospective buyer or tenant should independently investigate, evaluate and verify all information provided herein and any other matters deemed material. Please consult your attorney, tax advisor or other professional advisor. The terms of sale or lease set forth herein are subject to change or withdrawal at any time and without notice.

# SUITES 25500/25502 SAMPLE FLOOR PLAN

## SUITE FEATURES

---

- 12,771 SF (5,313 SF ofc)
- Landlord Flexible on Office/Warehouse Ratios
- Office/Warehouse Space
- 10 Private Offices
- 4 Restrooms
- Break Area with Kitchenette
- 4 Grade-level Roll-up Doors



**SUITE 25500/25502**

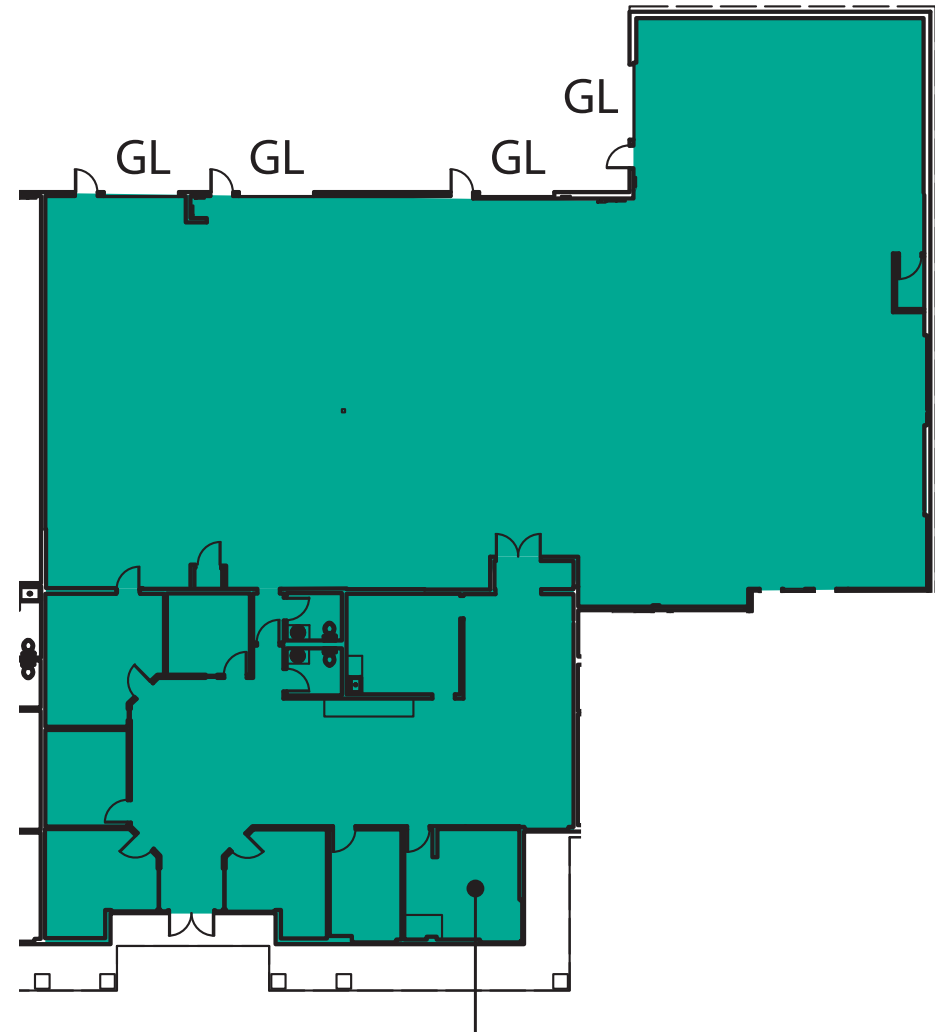
12,771 SF  
(5,313 SF ofc)

# SUITES 25500 SAMPLE FLOOR PLAN

## SUITE FEATURES

---

- 11,236 SF (3,778 SF ofc)
- Landlord Flexible on Office/Warehouse Ratios
- Office/Warehouse Space
- 7 Private Offices
- 2 Restrooms
- Break Area with Kitchenette
- 4 Grade-level Roll-up Doors



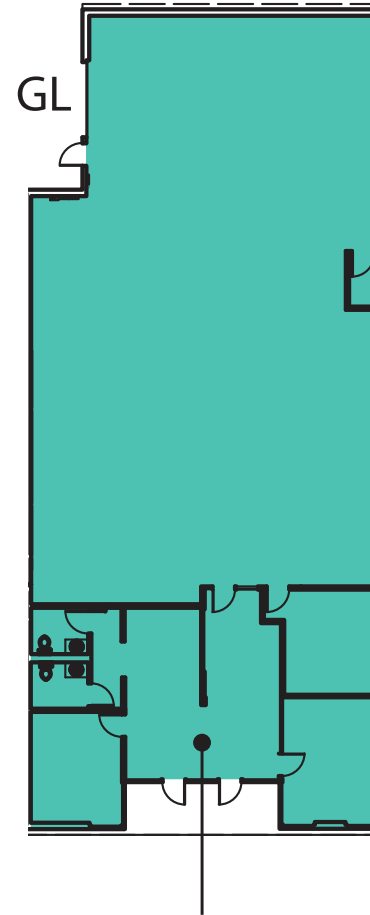
**SUITE 25500**  
11,236 SF  
(3,778 SF ofc)

# SUITE 25502 SAMPLE FLOOR PLAN

## SUITE FEATURES

---

- 5,130 SF (1,535 SF ofc)
- Landlord Flexible on Office/Warehouse Ratios
- End Cap Space
- Open Warehouse Area
- Office Area with 3 Private Offices
- 2 Restrooms
- 1 Grade-level Roll-up Door



**SUITE 25502**  
5,130 SF  
(1,535 SF ofc)

# LOCATION MAP

