

# OFFICE/MEDICAL SPACE

21135-21137 State Route 410 E, Bonney Lake, WA 98391



**139 SF - 10,291 SF Available**  
**\$16.00/SF, NNN**

## FEATURES:

- Recently Upgraded Lobby & Finishes
- Abundant Parking
- Building Signage for Larger Suites
- Close Proximity to Tehaleh Community
  - Largest Planned Community in Washington
- Elevator Access
- Executive Suites Available: 139 SF - 513 SF
- [Retail Also Available](#) (click for flyer)



**Jack Rosen**  
(425) 289-2221  
brians@rosenharbottle.com

**RH ROSEN  
HARBOTTLE**  
COMMERCIAL REAL ESTATE

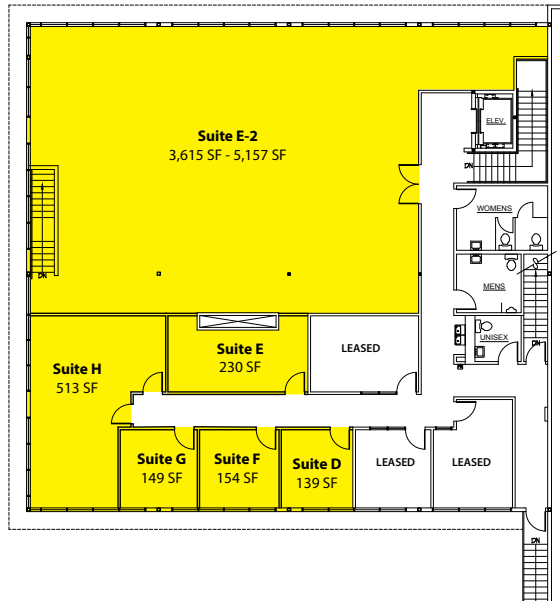
**Brian Stewart**  
(425) 289-2222  
brians@rosenharbottle.com

## SECOND FLOOR

### Executive Suites

Suite	SF	Rent/Month
D	139 SF	\$550
E	230 SF	\$700
F	154 SF	\$575
G	149 SF	\$550
H	513 SF	\$1,550

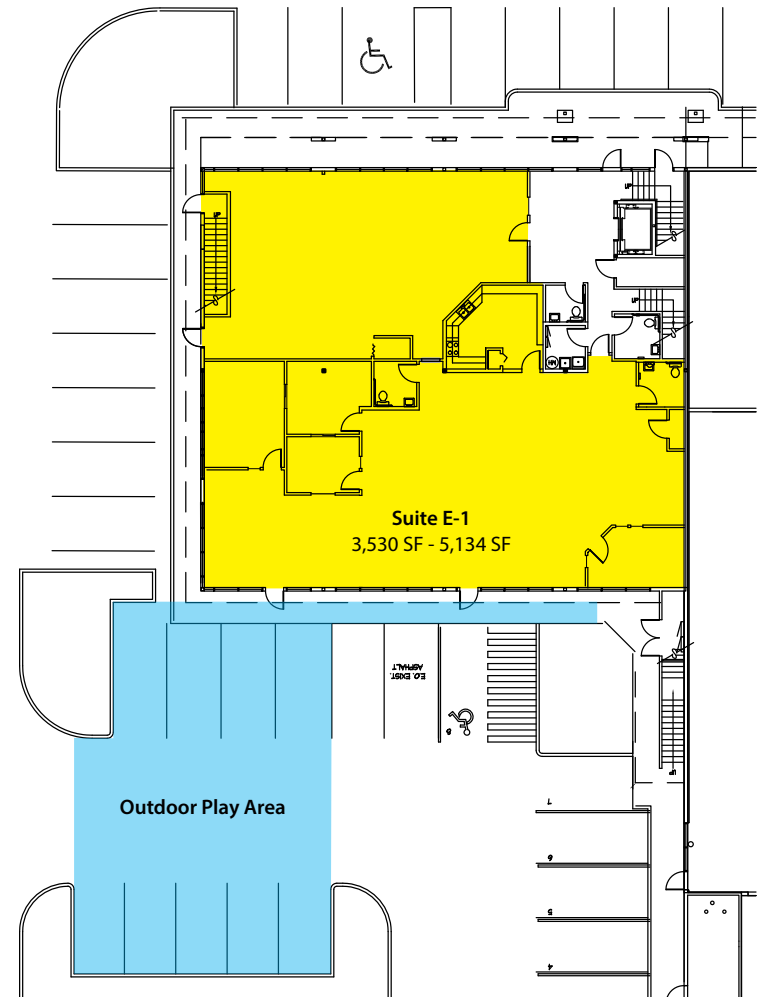
[[Rent/Month above includes utilities.]]



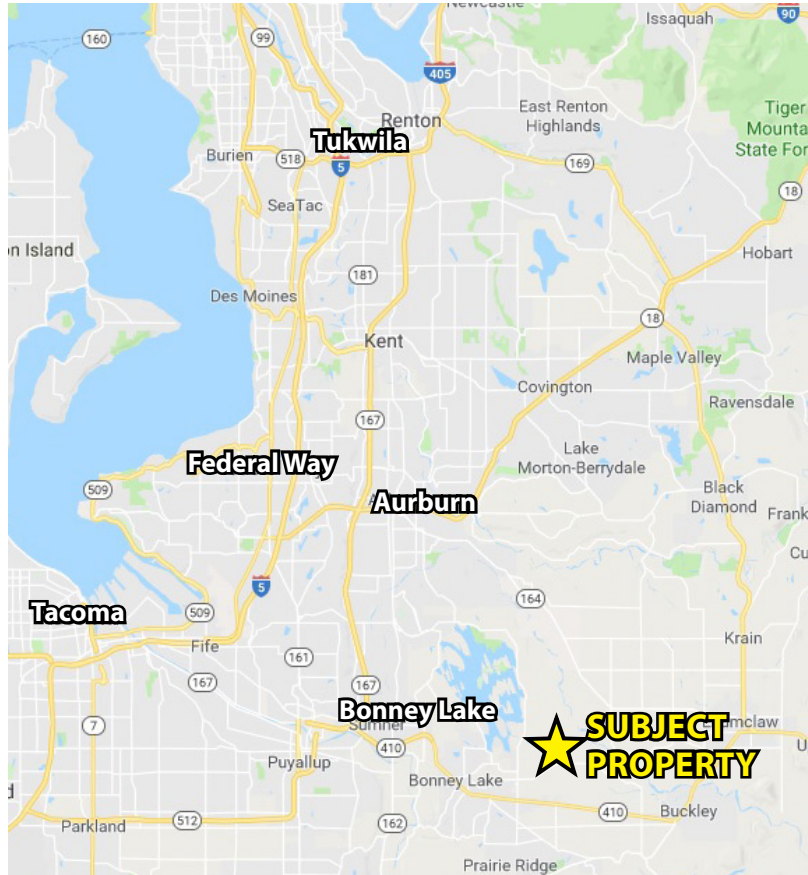
## FIRST FLOOR

### Office / Medical Suites

Suite	SF	Rent/SF
E1	3,530-5,134 SF	\$16.00/SF
E2	3,615-5,157 SF	\$16.00/SF
Contiguous	10,291 SF	\$16.00/SF







**Jack Rosen**  
 (425) 289-2221  
 brians@rosenharbottle.com

**RH ROSEN  
 HARBOTTLE**  
 COMMERCIAL REAL ESTATE

**Brian Stewart**  
 (425) 289-2222  
 brians@rosenharbottle.com