

58,824 SF
WAREHOUSE



DELTA BUSINESS PARK

10411 Airport Road | Everett, WA

Grant Rubenstein

425.289.2220

grant@rosenharbottle.com

425.454.3030
rosenharbottle.com

PO Box 5003
Bellevue, WA 98009 - 5003



HIGH VISIBILITY WAREHOUSE AVAILABLE

58,824 SF (23,031 SF office/showroom)

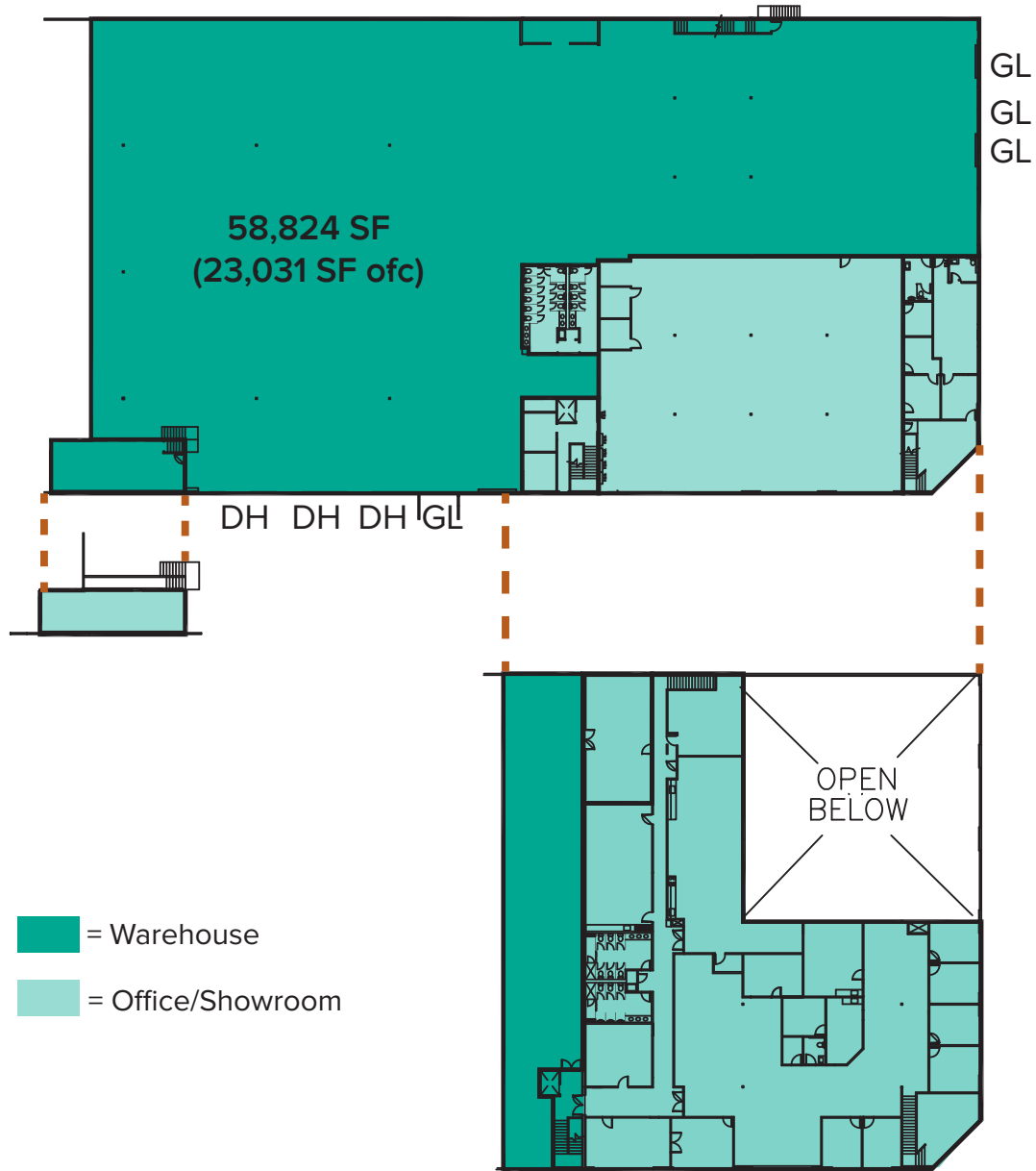
FEATURES:

- Available 9/1/2023
- Frontage on Airport Road
- 4 Grade-level doors
- 3 Dock-highs doors
- Heavy power
- 24' Clear Heights
- Sprinkled building



The information provided herein has been obtained from sources believed to be reliable, but no representation or warranty, express or implied, is made with respect to the accuracy or completeness of any such information. Each prospective buyer or tenant should independently investigate, evaluate and verify all information provided herein and any other matters deemed material. Please consult your attorney, tax advisor or other professional advisor. The terms of sale or lease set forth herein are subject to change or withdrawal at any time and without notice.

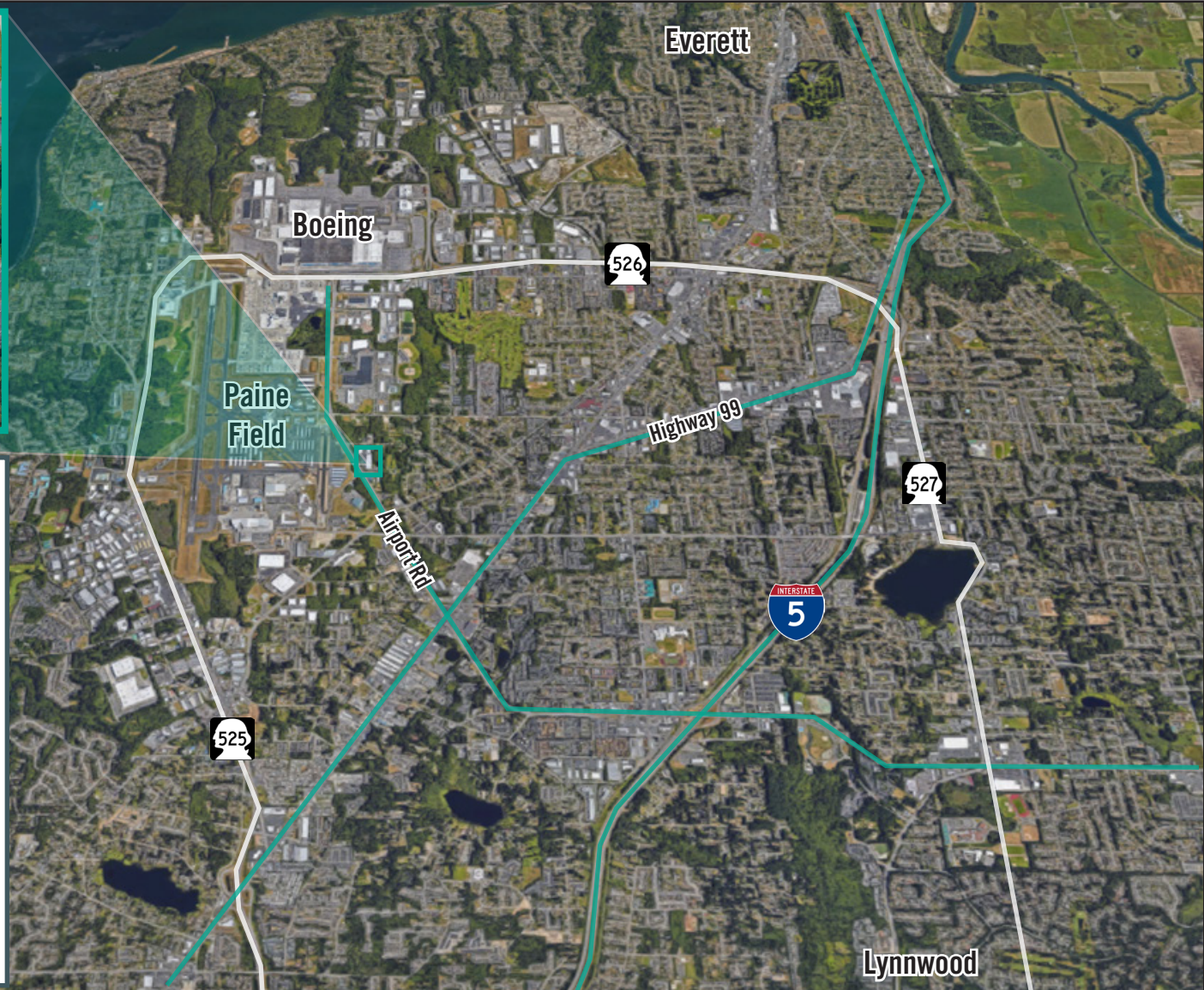
FLOOR PLAN



- = Warehouse
- = Office/Showroom

The information provided herein has been obtained from sources believed to be reliable, but no representation or warranty, express or implied, is made with respect to the accuracy or completeness of any such information. Each prospective buyer or tenant should independently investigate, evaluate and verify all information provided herein and any other matters deemed material. Please consult your attorney, tax advisor or other professional advisor. The terms of sale or lease set forth herein are subject to change or withdrawal at any time and without notice.

LOCATION MAP



DRIVE TIMES

(10411 Airport Road):

From Hwy 526: 5 Minutes

From Boeing: 5 Minutes

From Lynnwood: 10 Minutes

From Bellevue: 24 Minutes

From Seattle: 26 Minutes