

OFC/WHSE
LEASE

Available

Available

Available

Redmond-Fall City Road NE

EASTLAKE BUSINESS PARK, Buildings C & E

18336-18398 Redmond-Fall City Road | Redmond, WA 98052

Caleb Farnworth, CCIM

425.289.2235

calebf@rosenharbottle.com

425.454.3030
rosenharbottle.com

PO Box 5003
Bellevue, WA 98009 - 5003





EASTSIDE AVAILABILITIES: SMALL, OFC/WHSE SPACES

1,679 SF - 2,200 SF Available

PROPERTY DETAILS:

- Professional, Business Park Setting
- Quick Access to SR 520, Union Hill & Downtown Redmond
- Nearby Amenities Include Home Depot, Whole Foods, Chipotle, Target, Kohl's, Costco & More
- Located Minutes From Future Light Rail Stations

The information provided herein has been obtained from sources believed to be reliable, but no representation or warranty, express or implied, is made with respect to the accuracy or completeness of any such information. Each prospective buyer or tenant should independently investigate, evaluate and verify all information provided herein and any other matters deemed material. Please consult your attorney, tax advisor or other professional advisor. The terms of sale or lease set forth herein are subject to change or withdrawal at any time and without notice.

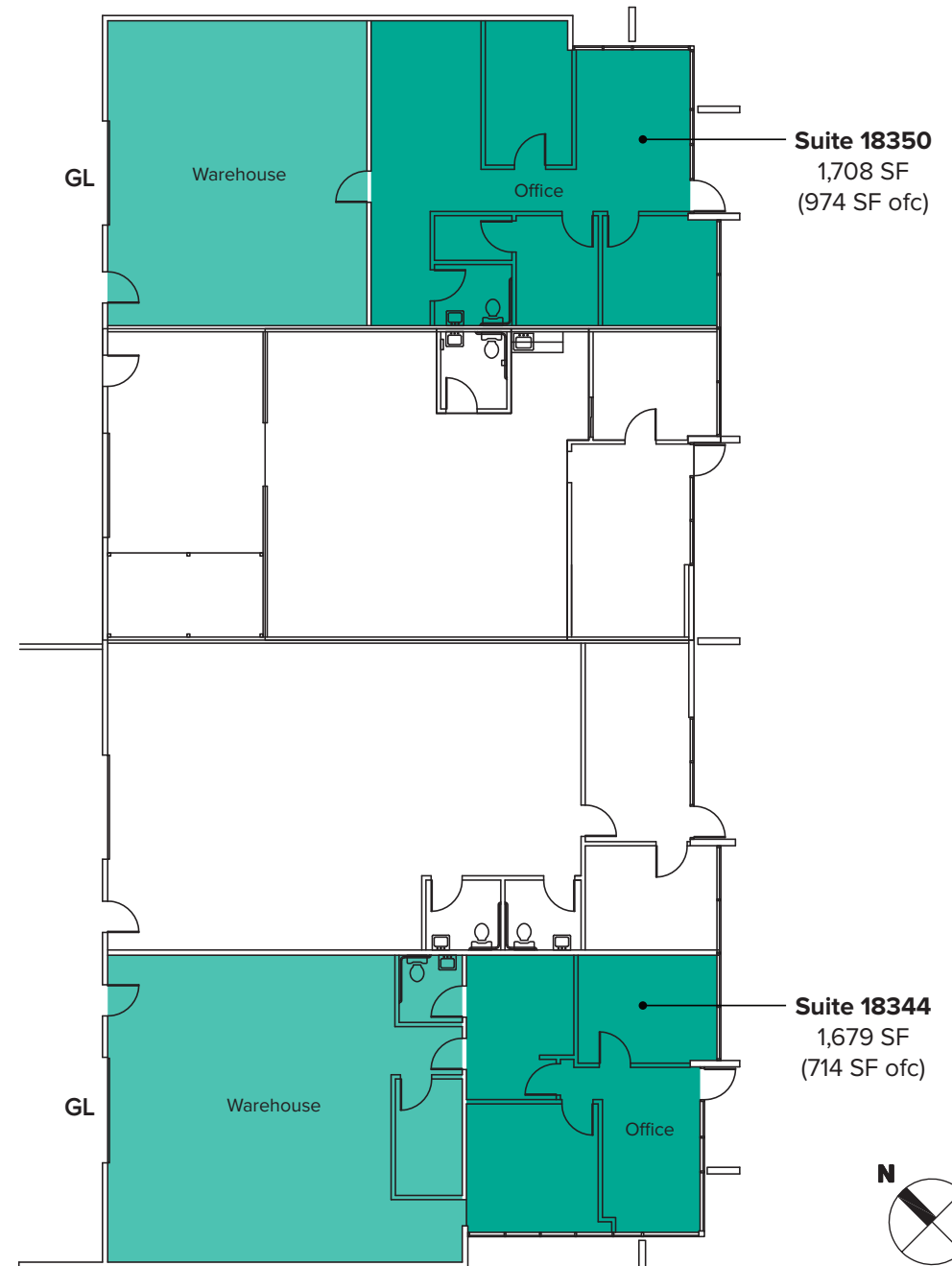
BUILDING C FLOOR PLAN

SUITE 18350 FEATURES

- Available Now
- 1,708 SF (974 SF ofc)
- \$2,682/Month, NNN
- 3 Private Offices
- 1 Restroom
- Reception Area
- Warehouse Space
- 1 GL Roll-up Loading Door
- 14' - 16' Clear Height in Warehouse

SUITE 18344 FEATURES

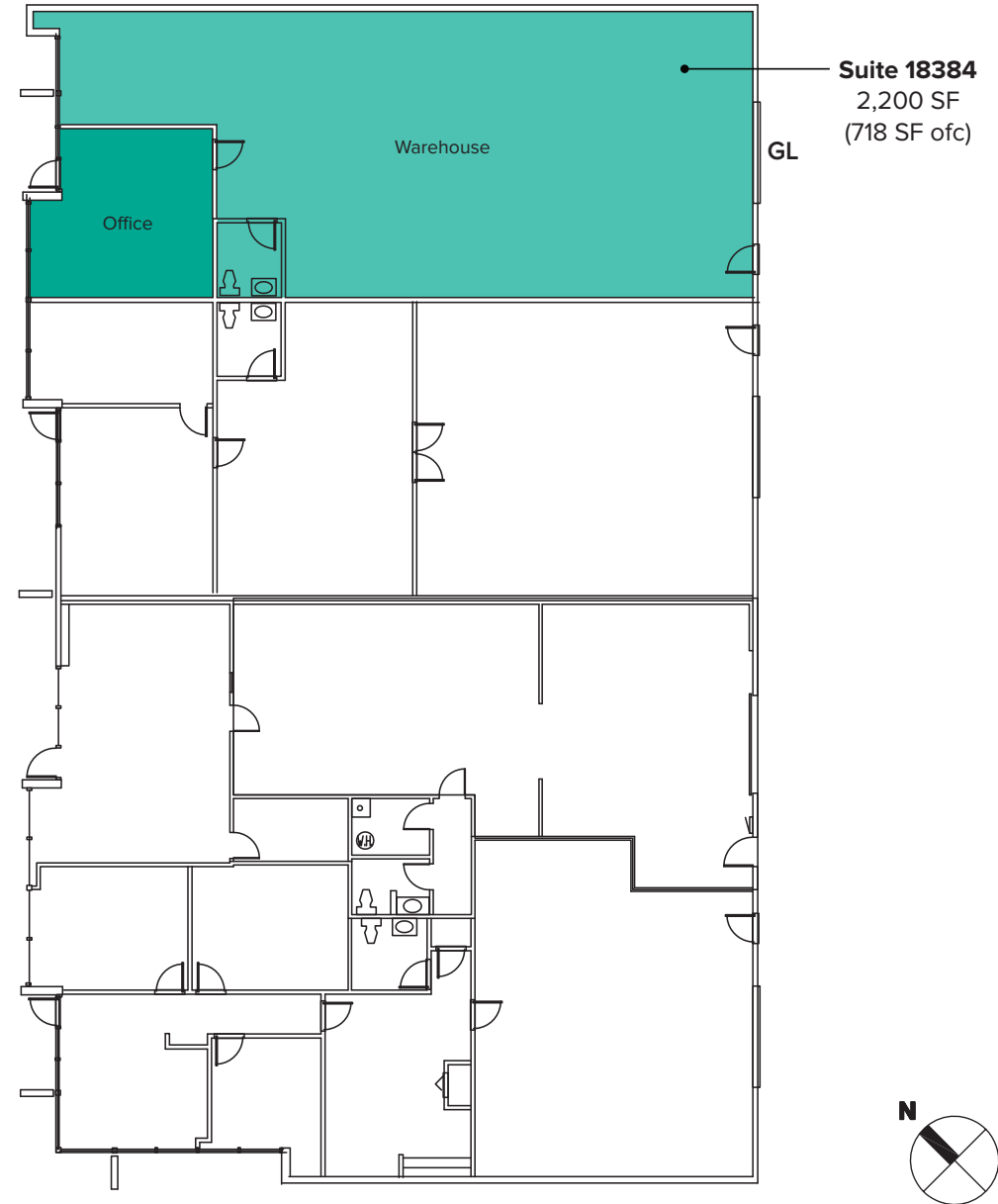
- Available 5/1/2021
- 1,679 SF (714 SF ofc)
- \$2,393/Month, NNN
- 2 Private Offices
- 1 Restroom
- Reception Area
- Warehouse Space
- 1 GL Roll-up Loading Door
- 14' - 16' Clear Height in Warehouse



BUILDING E FLOOR PLAN

SUITE 18384 FEATURES

- Available Now
- 2,200 SF (718 SF ofc)
- \$2,739/Month, NNN
- Office Area
- Warehouse Space
- 1 Restroom
- 1 GL Roll-up Loading Door
- 14' - 16' Clear Height in Warehouse



LOCATION MAP

