

**OFFICE LEASE
AVAILABLE**



MEADOW CREEK OFFICE PARK

22500 - 22619 SE 64th Place | Issaquah, WA

Brian Stewart

425.289.2222

brians@rosenharbottle.com

425.454.3030
rosenharbottle.com

PO Box 5003
Bellevue, WA 98009 - 5003





CLASS A OFFICE SPACES AVAILABLE

1,440 SF - 4,759 SF Available

OFFICE PARK DETAILS:

- Minutes from Costco Headquarters
- Amazing Location off I-90 at Front St/E Lake Sammamish Pkwy
- Nearby Amenities Include Retailers, Grocers, Restaurants, Hospital & Parks
- Park-Like, Campus Setting with Free Surface Parking

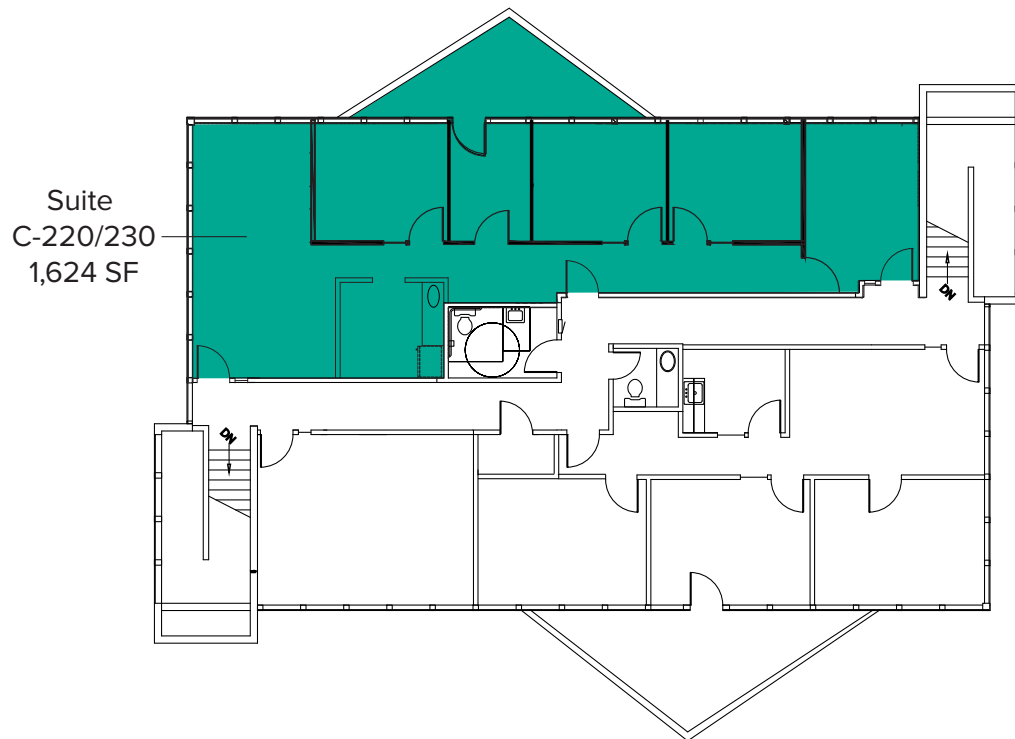
The information provided herein has been obtained from sources believed to be reliable, but no representation or warranty, express or implied, is made with respect to the accuracy or completeness of any such information. Each prospective buyer or tenant should independently investigate, evaluate and verify all information provided herein and any other matters deemed material. Please consult your attorney, tax advisor or other professional advisor. The terms of sale or lease set forth herein are subject to change or withdrawal at any time and without notice.

BUILDING C (22530)

| Suite | Square Feet | Rate |
|-----------|-------------|------------------|
| C-220/230 | 1,624 SF | \$20.00*/SF, NNN |

Second floor office with 4 private offices, break room with kitchenette, reception area with a customized California Closet, storage room, and a balcony. **Available Now.**

***Rate Available for Sublease Fully Executed by 4/30/2022**



The information provided herein has been obtained from sources believed to be reliable, but no representation or warranty, express or implied, is made with respect to the accuracy or completeness of any such information. Each prospective buyer or tenant should independently investigate, evaluate and verify all information provided herein and any other matters deemed material. Please consult your attorney, tax advisor or other professional advisor. The terms of sale or lease set forth herein are subject to change or withdrawal at any time and without notice.

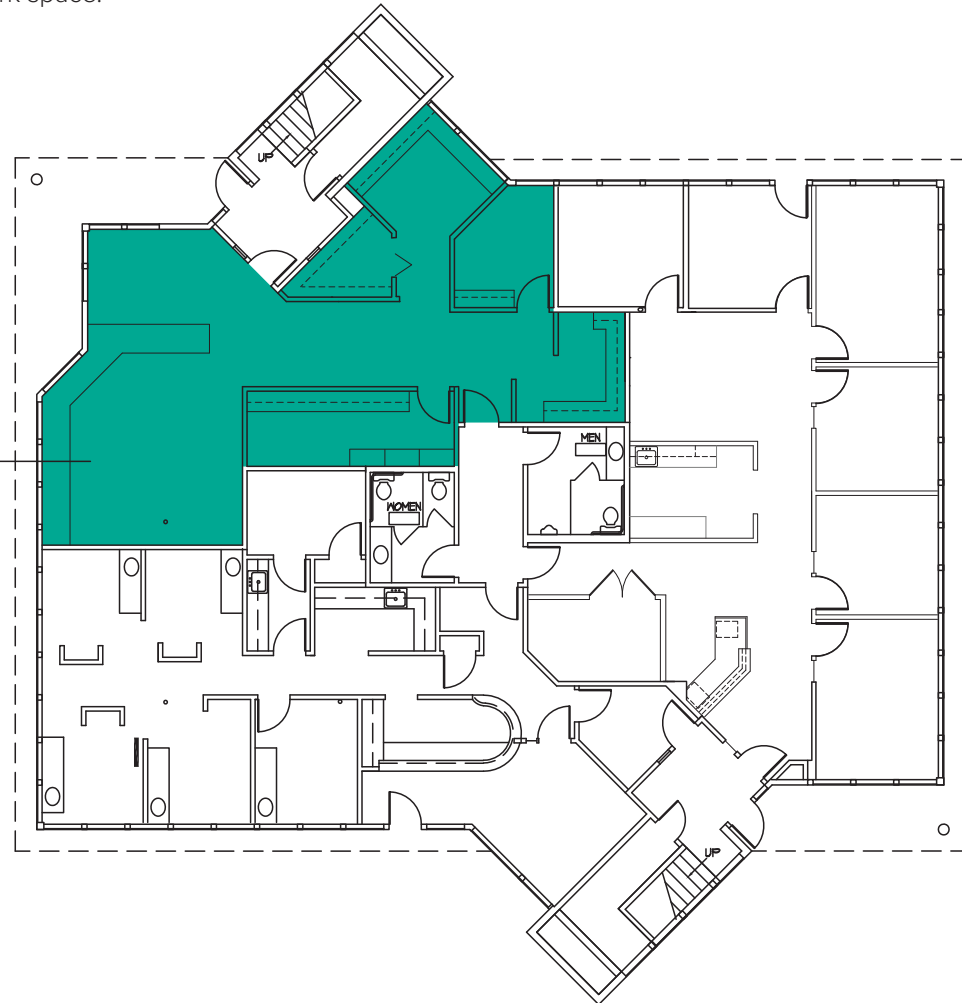
BUILDING D (22526)

FIRST LEVEL FLOOR PLAN

| Suite | Square Feet | Rate |
|-------|-------------|-----------------|
| D-140 | 1,440 SF | \$28.00/SF, NNN |

First floor office with 1 private room, reception area, break room, and open work space.
Available Now.

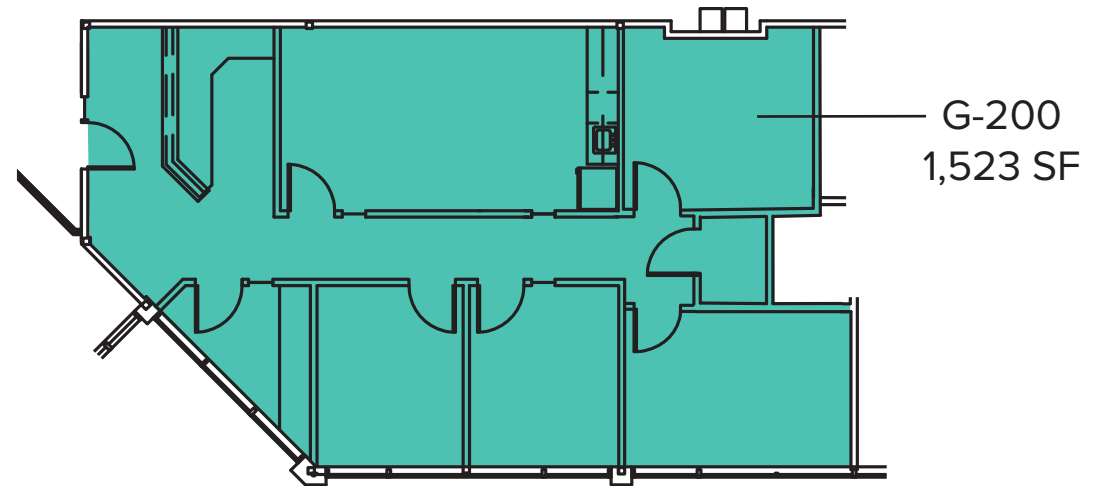
Suite D-140
1,440 SF



BUILDING G (22500) SECOND LEVEL FLOOR PLAN

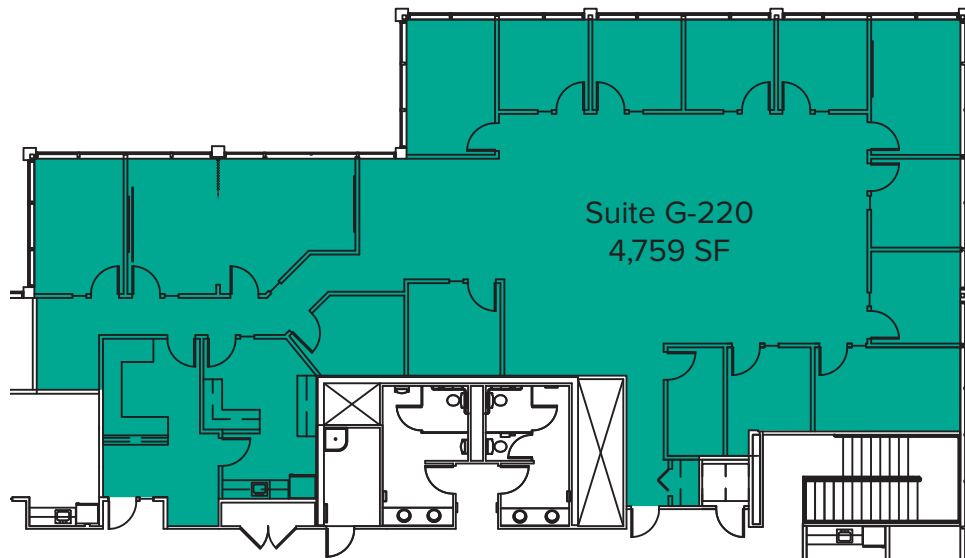
| Suite | Square Feet | Rate |
|-------|-------------|-----------------|
| G-200 | 1,523 SF | \$29.00/SF, NNN |

Second floor office with 4 private offices, reception area, break room with kitchenette, and storage closet. **Available 11/1/2022.**

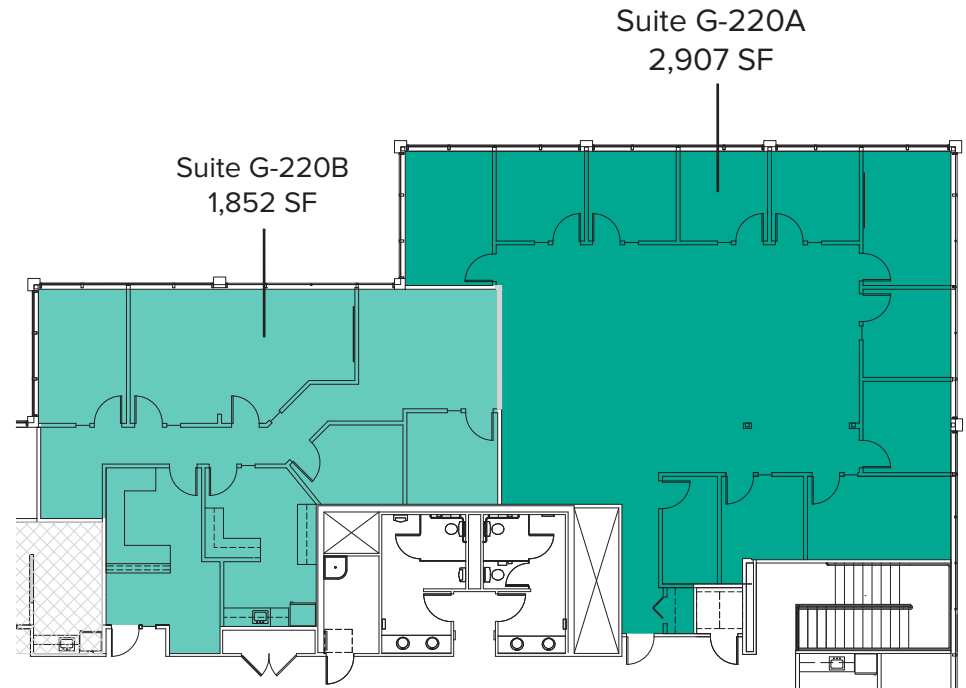


BUILDING G (22500) SECOND LEVEL FLOOR PLAN

| Suite | Square Feet | Rate | Notes |
|-------|---------------------|-----------------|---|
| G-220 | 1,852 SF - 4,759 SF | \$29.00/SF, NNN | Second floor office with private rooms, conference room, reception/lobby area, break room with a kitchenette, and 2 entrances. Space is divisible. Available with 60 days' notice. |



As-Is Floor Plan



Sample Floor Plan

The information provided herein has been obtained from sources believed to be reliable, but no representation or warranty, express or implied, is made with respect to the accuracy or completeness of any such information. Each prospective buyer or tenant should independently investigate, evaluate and verify all information provided herein and any other matters deemed material. Please consult your attorney, tax advisor or other professional advisor. The terms of sale or lease set forth herein are subject to change or withdrawal at any time and without notice.

SITE PLAN



LOCATION MAP

