



**FOR LEASE**

# East Campus Corporate Park IV

3450 S 344TH WAY, FEDERAL WAY, WASHINGTON



Full Building Renovations Completed

**WILL FRAME**

253.722.1412

[will.frame@kidder.com](mailto:will.frame@kidder.com)

**DREW FRAME**

253.722.1433

[drew.frame@kidder.com](mailto:drew.frame@kidder.com)

**Kidder  
Mathews**

This information supplied herein is from sources we deem reliable. It is provided without any representation, warranty, or guarantee, expressed or implied as to its accuracy. Prospective Buyer or Tenant should conduct an independent investigation and verification of all matters deemed to be material, including, but not limited to, statements of income and expenses. Consult your attorney, accountant, or other professional advisor.

**KIDDER.COM**



FOR LEASE

# ECCP IV

3450 S 344TH WAY, FEDERAL WAY, WA



**RENOVATIONS** include lobby, common areas, bathrooms, and exterior

**FIRST FLOOR** 2,225 RSF to 10,929 RSF

**RATE** \$14.50 PSF, NNN (\$8.49 PSF inclusive of all utilities and suite specific janitorial)

**ACCESS** immediate access to SR-18 & I-5

## AVAILABILITIES

| Suite | RSF   |
|-------|-------|
| 110   | 1,953 |
| 115   | 3,185 |
| 132   | 2,808 |
| 145   | 2,225 |

## WILL FRAME

253.722.1412

[will.frame@kidder.com](mailto:will.frame@kidder.com)

## DREW FRAME

253.722.1433

[drew.frame@kidder.com](mailto:drew.frame@kidder.com)

[KIDDER.COM](http://KIDDER.COM)

This information supplied herein is from sources we deem reliable. It is provided without any representation, warranty, or guarantee, expressed or implied as to its accuracy. Prospective Buyer or Tenant should conduct an independent investigation and verification of all matters deemed to be material, including, but not limited to, statements of income and expenses. Consult your attorney, accountant, or other professional advisor.



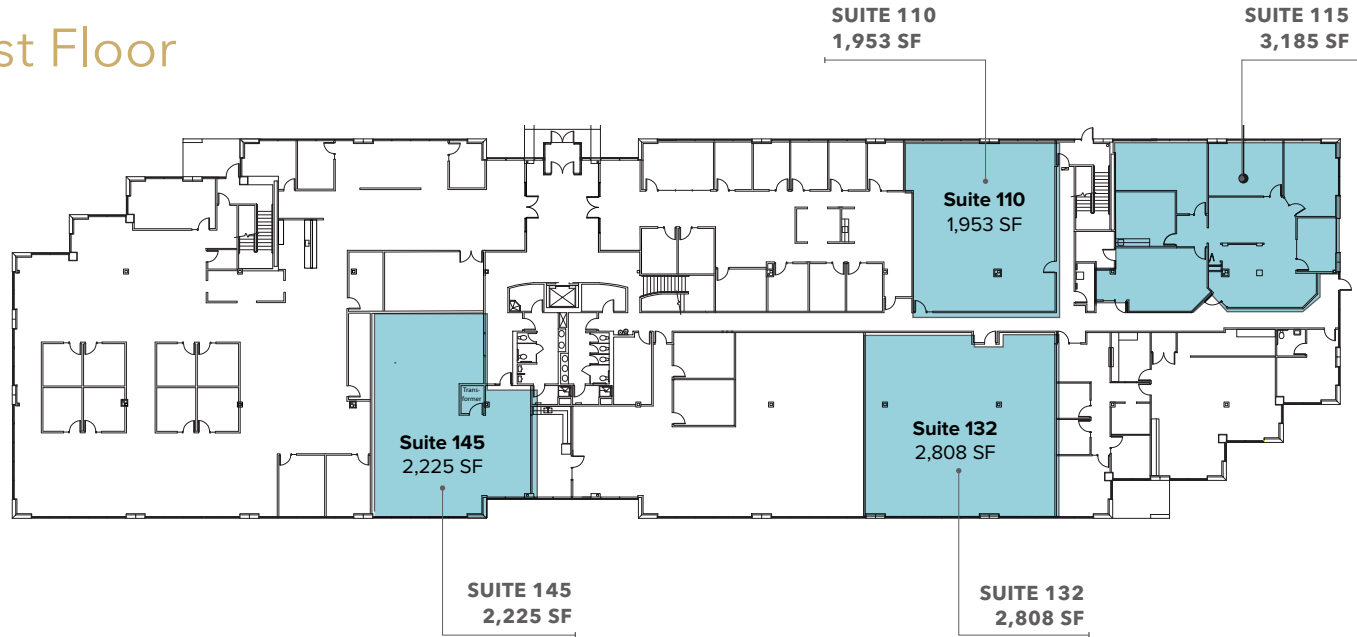


FOR LEASE

# ECCP IV

3450 S 344TH WAY, FEDERAL WAY, WA

## First Floor



### BUILDING AVAILABLE SPACE

| Suite | SF        |
|-------|-----------|
| 110   | 1,953 RSF |
| 115   | 3,185 RSF |
| 132   | 2,808 RSF |
| 145   | 2,225 RSF |

1,953 - 10,171

SQUARE FEET

\$14.50, NNN

LEASE RATE

**WILL FRAME**

253.722.1412

[will.frame@kidder.com](mailto:will.frame@kidder.com)

**DREW FRAME**

253.722.1433

[drew.frame@kidder.com](mailto:drew.frame@kidder.com)

[KIDDER.COM](http://KIDDER.COM)

This information supplied herein is from sources we deem reliable. It is provided without any representation, warranty, or guarantee, expressed or implied as to its accuracy. Prospective Buyer or Tenant should conduct an independent investigation and verification of all matters deemed to be material, including, but not limited to, statements of income and expenses. Consult your attorney, accountant, or other professional advisor.

 **Kidder  
Mathews**