

# Rainier Professional Plaza

Class A office space available with generous tenant improvement packages

18209 HWY 410, BONNEY LAKE, WA







## Building & Monument Signage Available with Visibility from Hwy 410



\$28.00/SF, NNN



Suite 100: 5,431 - 10,872 SF  
Suite 200: 2,500 - 10,862 SF  
Suite 100 & 200: 21,724 SF  
Suite 306: 2,890 SF



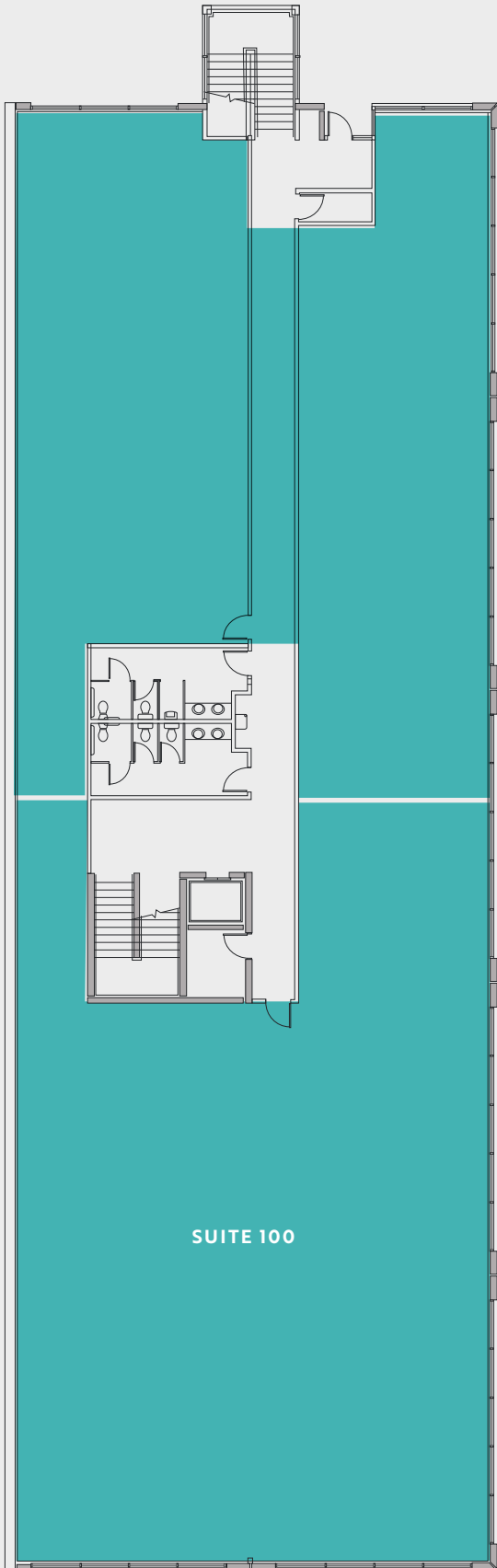
Building signage & monument signage



Visibility from Route 410, high density 41,000 VPC

# 1st Floor

RAINIER PROFESSIONAL PLAZA



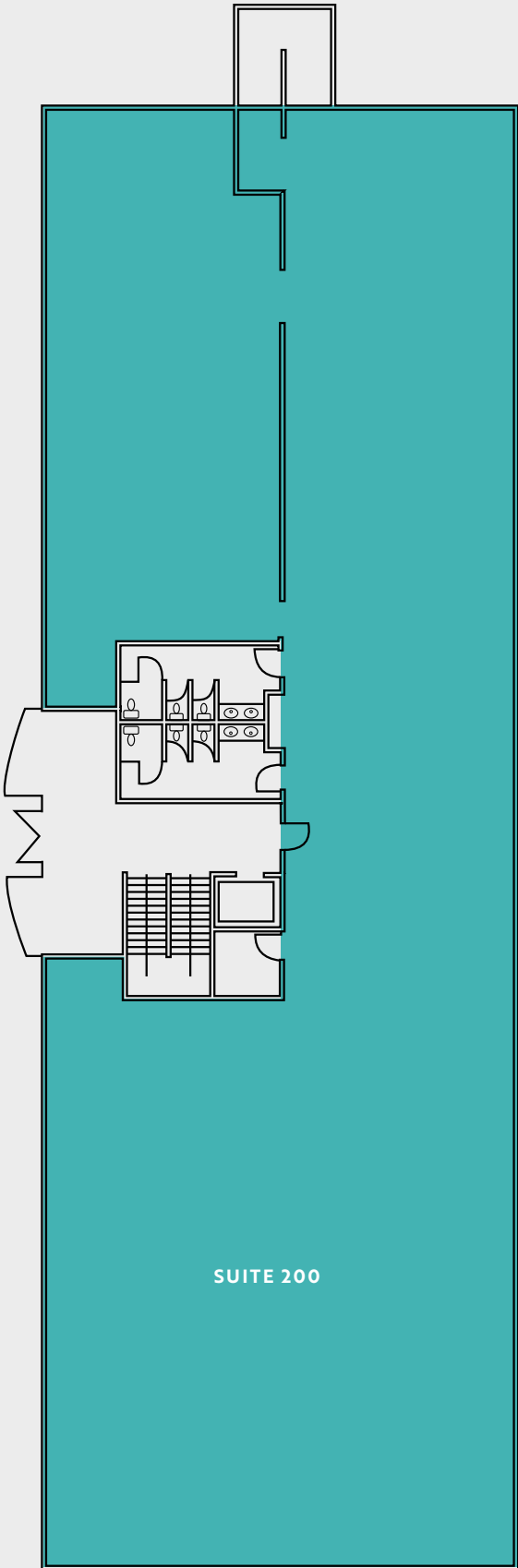
Suite	Size
100	5,431 - 10,872 SF
100 & 200	21,724 SF

Availabilities



# 2nd Floor

RAINIER PROFESSIONAL PLAZA



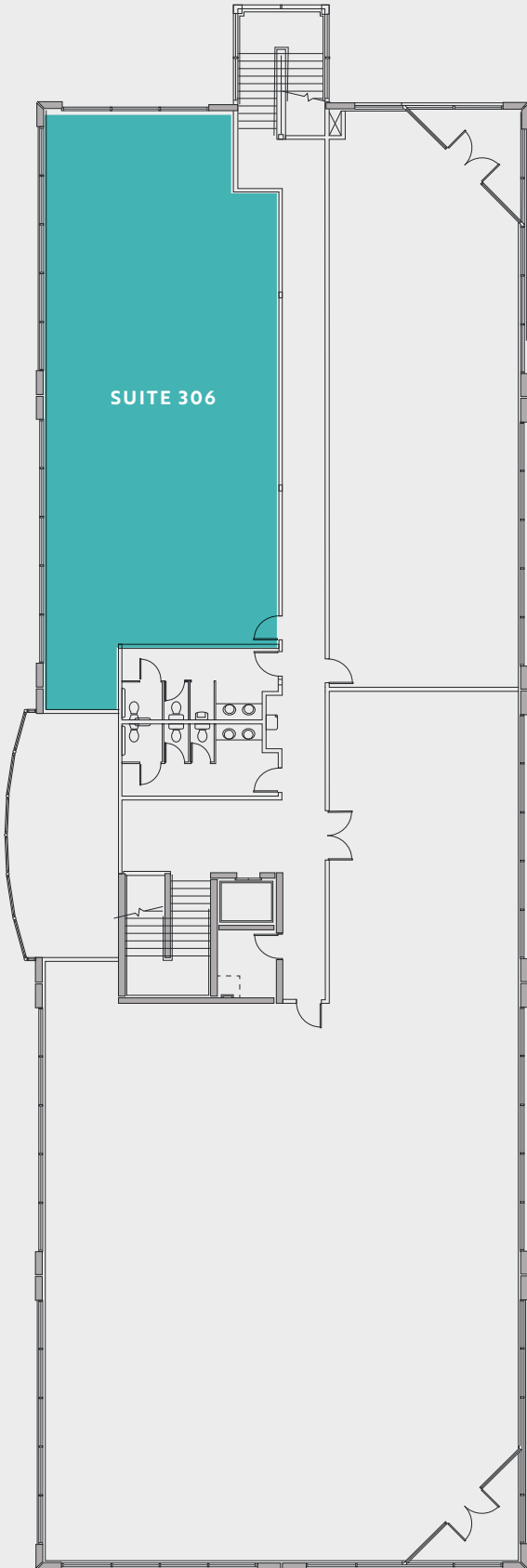
Suite	Size
200	2,500 - 10,862 SF
100 & 200	21,724 SF

Availabilities



# 3rd Floor

RAINIER PROFESSIONAL PLAZA



Suite

306

Size

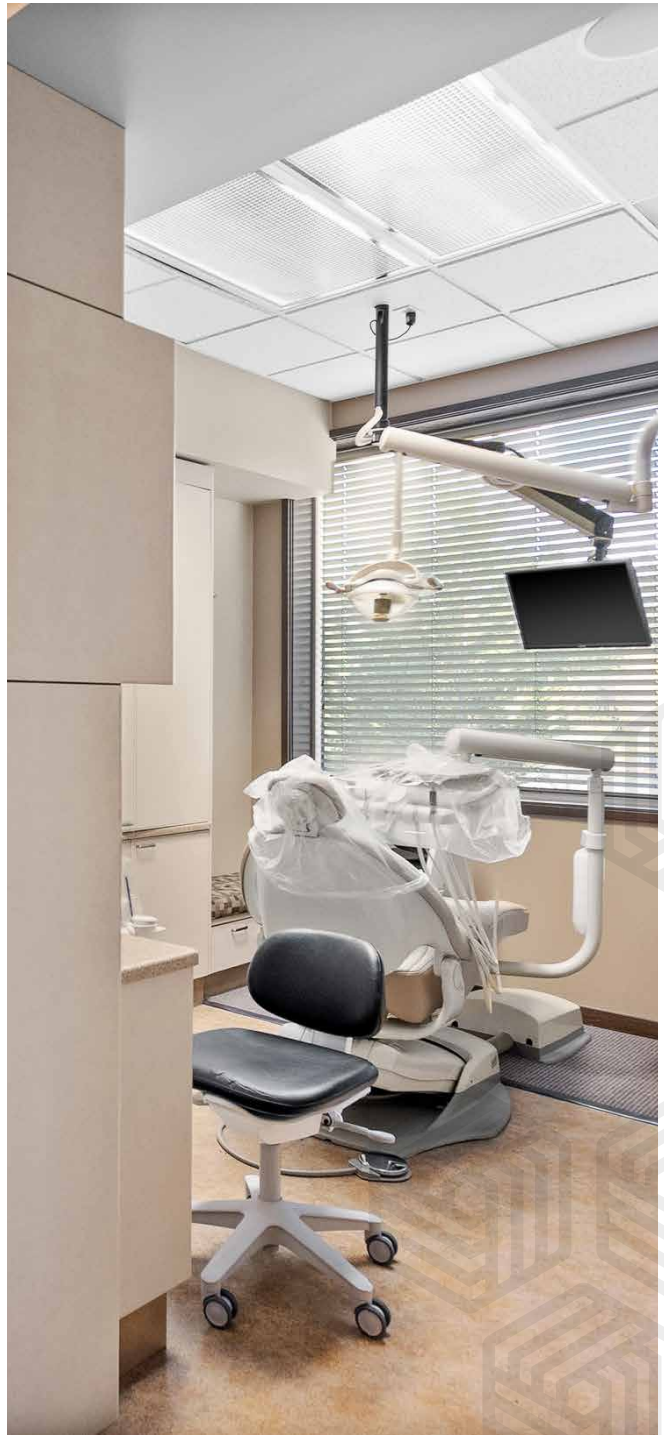
2,890 SF

Availabilities



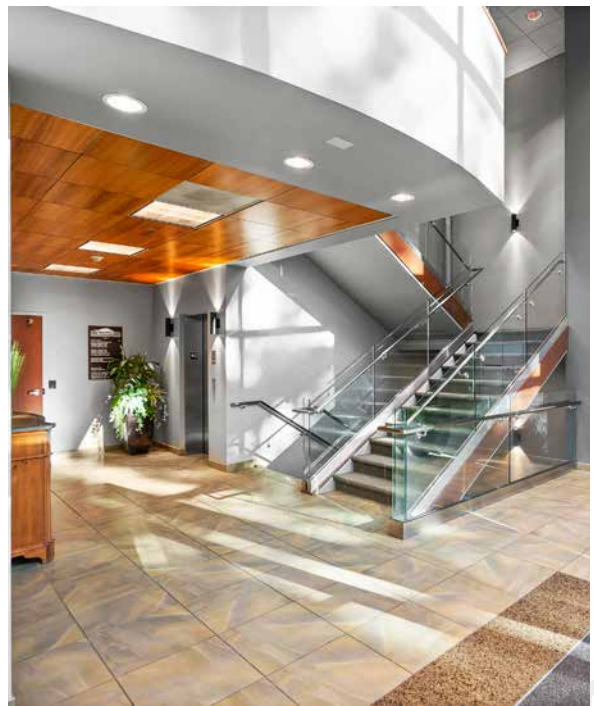


# Photos





# Photos







# Rainier Professional Plaza

18209 HWY 410 | BONNEY LAKE, WA

**WILL FRAME**

253.722.1412

[will.frame@kidder.com](mailto:will.frame@kidder.com)

**DREW FRAME**

253.722.1433

[drew.frame@kidder.com](mailto:drew.frame@kidder.com)



**ROSEN HARBOTTLE**  
COMMERCIAL REAL ESTATE

Leasing by



**Kidder  
Mathews**

This information supplied herein is from sources we deem reliable. It is provided without any representation, warranty, or guarantee, expressed or implied as to its accuracy. Prospective Buyer or Tenant should conduct an independent investigation and verification of all matters deemed to be material, including, but not limited to, statements of income and expenses. Consult your attorney, accountant, or other professional advisor.

**KIDDER.COM**