

EVERGREEN INDUSTRIAL CENTER

19510 144th Avenue NE, Woodinville, WA 98072



WAREHOUSE/MANUFACTURING

Suite	Total SF	Office SF	Mezz SF	Rent/ Month	NNN	Total/ Month	Avail
B-1	3,000 SF	400 SF	-	\$2,190	\$750	\$2,940	Now
B-7	7,982 SF	834 SF	982 SF	\$5,861	\$1,750	\$7,611	Now
Suites B-1 & B-7 are contiguous for 10,982 SF (1,234 SF Ofc + 982 SF Mezz) total.							
E-4	3,500 SF	479 SF	-	\$2,562	\$875	\$3,437	9/1/14

FEATURES:

- **\$1.25/SF Office | \$0.65/SF Whse | \$0.75/SF Mezz**
- New Exterior
- Quick Access to SR 522 & I-405
- 20' Clear Height
- Sprinklered & 3-Phase Power
- DH & GL Loading
- Concrete Tilt-Up Construction
- Ideal Uses: Distribution, Manufacturing, Storage, Winery, Brewery

Rosen-Harbottle Commercial Real Estate | P.O. Box 5003 Bellevue, WA 98009-5003
phone: (425) 454-3030 fax: (425) 454-6705 | www.rosenharbottle.com

The information provided has been obtained from sources believed reliable. While we do not doubt its accuracy, we have not verified and make no guarantee, warranty or representation about it. It is your sole responsibility to independently confirm its accuracy and completeness.



ROSEN | HARBOTTLE

For more information, contact:

ROSEN~HARBOTTLE
COMMERCIAL REAL ESTATE

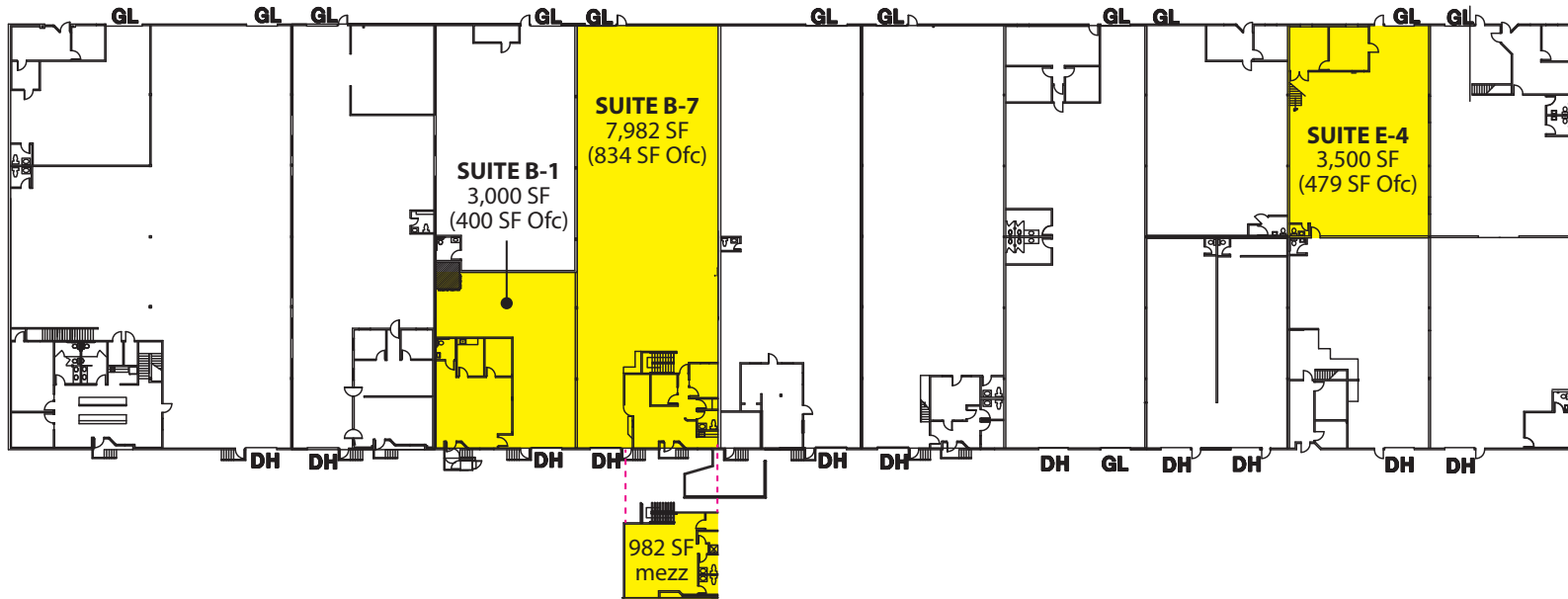
Caleb Farnworth, CCIM
(425) 289-2235
calebf@rosenharbottle.com

www.rosenharbottle.com

EVERGREEN INDUSTRIAL CENTER

19510 144th Avenue NE, Woodinville, WA 98072

Suite B-1: 3,000 SF (400 SF Ofc)
Suite B-7: 7,982 SF (834 SF Ofc)
Combined: 10,982 SF (1,234 SF Ofc + 982 SF Mezz)



For more information, contact:

ROSEN~HARBOTTLE COMMERCIAL REAL ESTATE

Caleb Farnworth, CCIM

(425) 289-2235

calebf@rosenharbottle.com

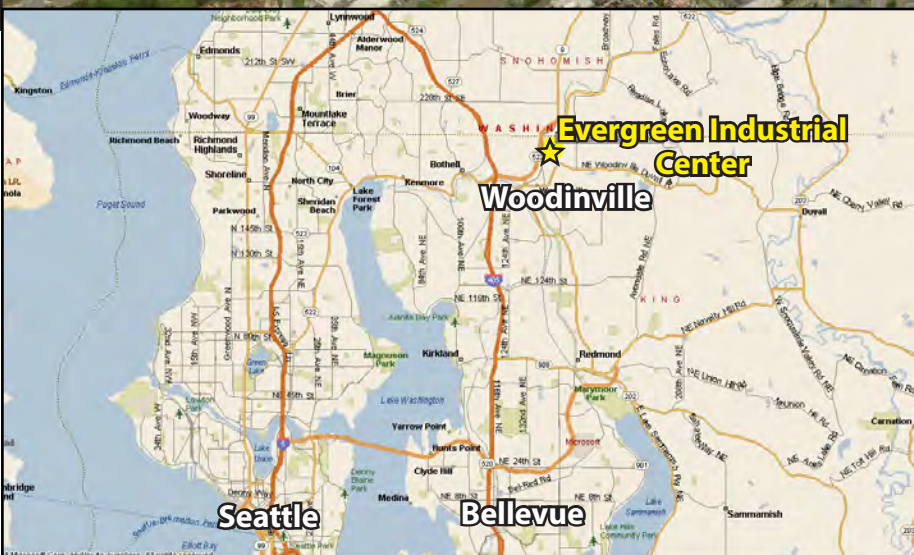
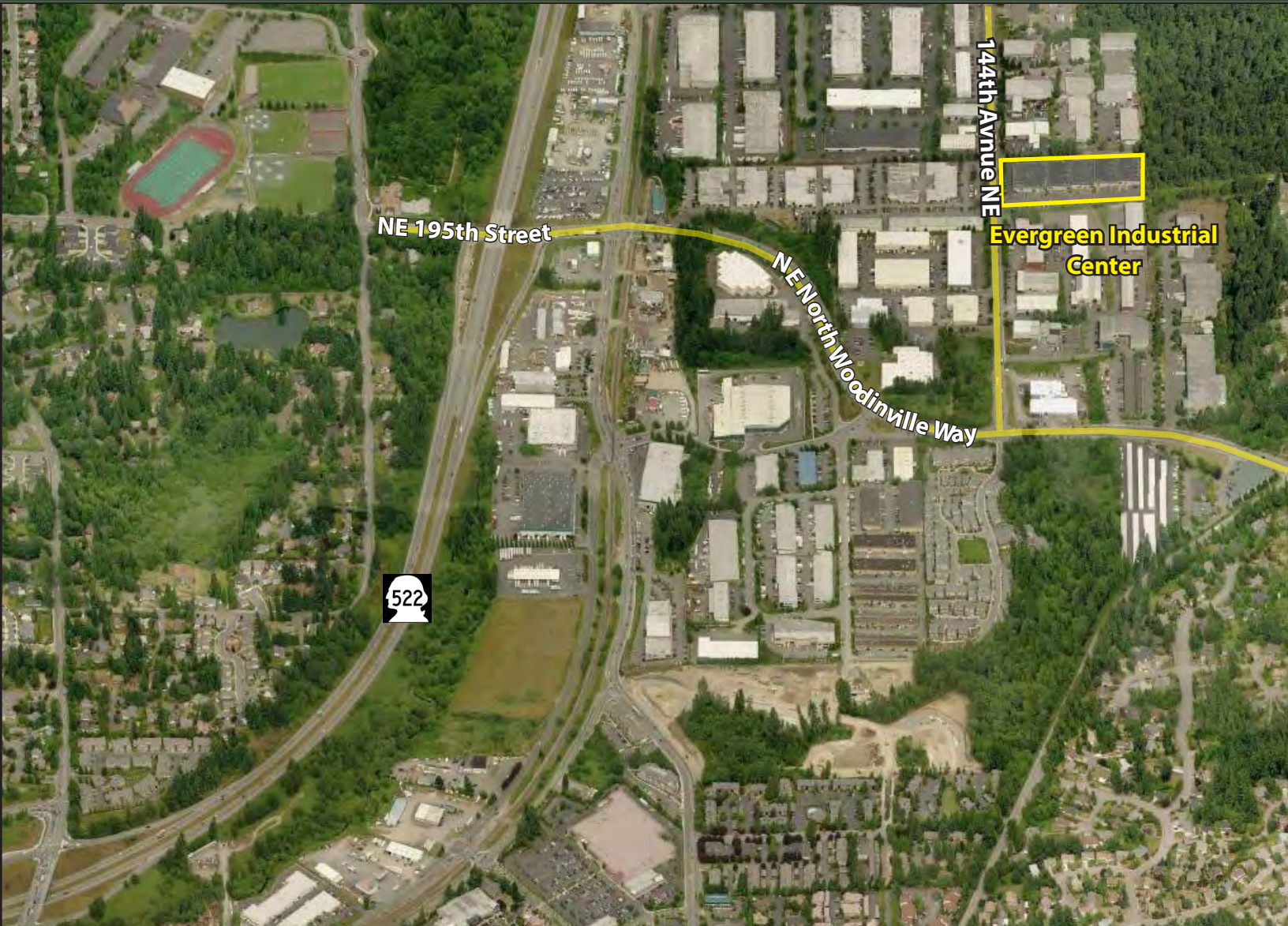
www.rosenharbottle.com

Rosen-Harbottle Commercial Real Estate | P.O. Box 5003 Bellevue, WA 98009-5003
phone: (425) 454-3030 fax: (425) 454-6705 | www.rosenharbottle.com

The information provided has been obtained from sources believed reliable. While we do not doubt its accuracy, we have not verified and make no guarantee, warranty or representation about it. It is your sole responsibility to independently confirm its accuracy and completeness.

EVERGREEN INDUSTRIAL CENTER

19510 144th Avenue NE, Woodinville, WA 98072



For more information, contact:

**ROSEN~HARBOTTLE
COMMERCIAL REAL ESTATE**

Caleb Farnworth, CCIM

(425) 289-2235

calebf@rosenharbottle.com

www.rosenharbottle.com

Rosen-Harbottle Commercial Real Estate | P.O. Box 5003 Bellevue, WA 98009-5003

phone: (425) 454-3030 fax: (425) 454-6705 | www.rosenharbottle.com

The information provided has been obtained from sources believed reliable. While we do not doubt its accuracy, we have not verified and make no guarantee, warranty or representation about it. It is your sole responsibility to independently confirm its accuracy and completeness.