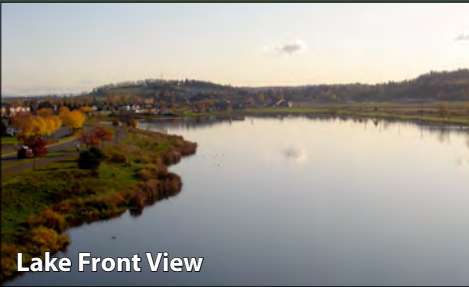


# LAKE TYE BUILDING

14090 Fryelands Boulevard, Monroe, WA 98272



Lake Front View

Only Space Available!



## Exceptional Retail Just Off Highway 2

### 1,411 SF Available

### \$15.00/SF, NNN

#### FEATURES:

- Adjacent to El Lago Mexican Restaurant & Bar
- Lake Front Building with Views
- Highest Quality Building in Monroe
- Two Floors of Office over Ground-Floor Retail
- 22,000+ Cars per Day on Fryelands
- 4.5 / 1,000 Parking Ratio - Free
- \$5.51/ SF Estimated NNN Expenses



For more information, contact:

ROSEN~HARBOTTLE  
COMMERCIAL REAL ESTATE

**Caleb Farnworth, CCIM**  
(425) 289-2235  
calebf@rosenharbottle.com

www.rosenharbottle.com

Rosen~Harbottle Commercial Real Estate | P.O. Box 5003 Bellevue, WA 98009-5003  
phone: (425) 454-3030 fax: (425) 454-6705 | www.rosenharbottle.com

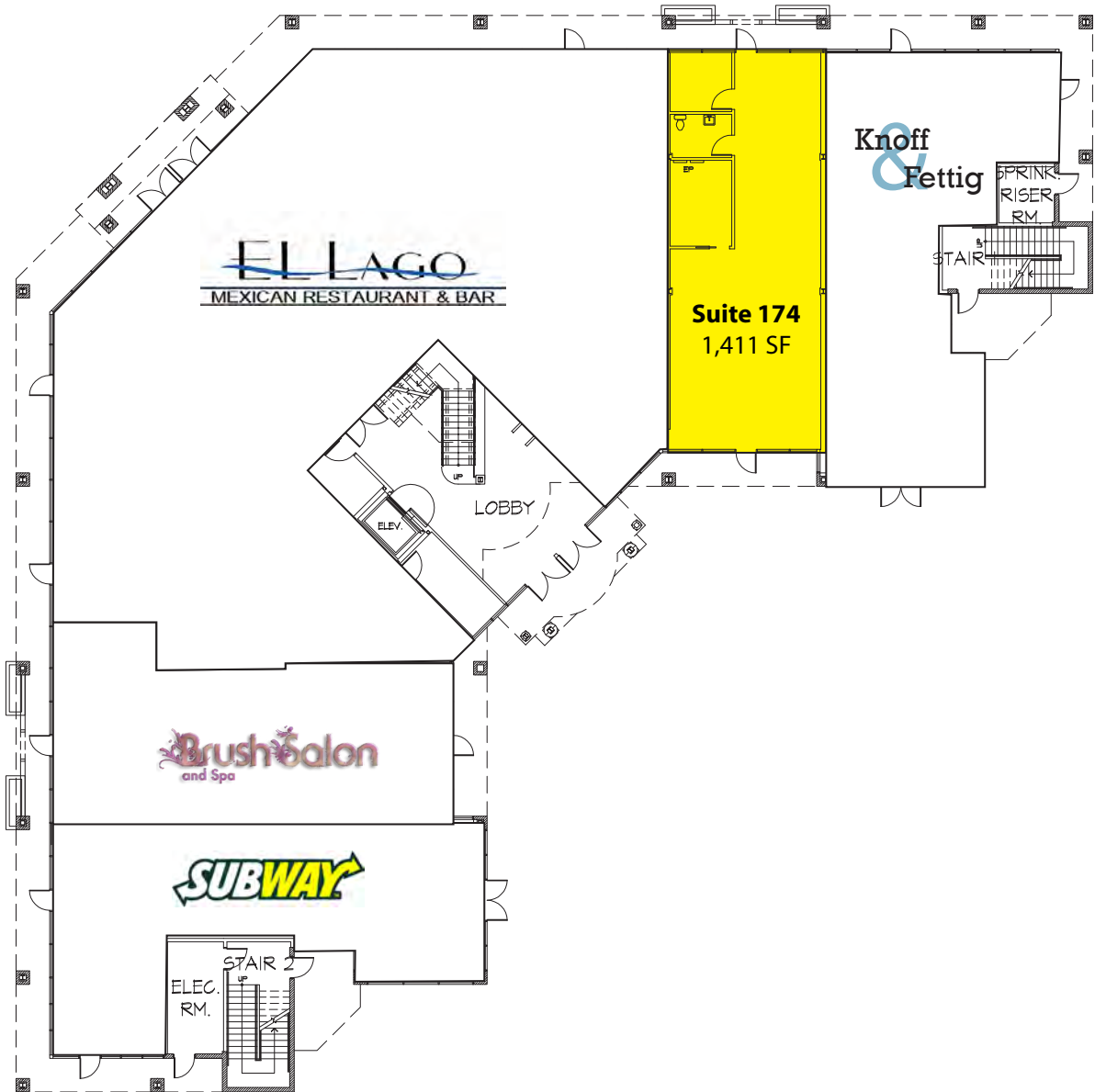
The information provided has been obtained from sources believed reliable. While we do not doubt its accuracy, we have not verified and make no guarantee, warranty or representation about it. It is your sole responsibility to independently confirm its accuracy and completeness.

# LAKE TYE BUILDING

14090 Fryelands Boulevard, Monroe, WA 98272

## FIRST FLOOR RETAIL

Suite	SF	Available
174	1,411	30 days

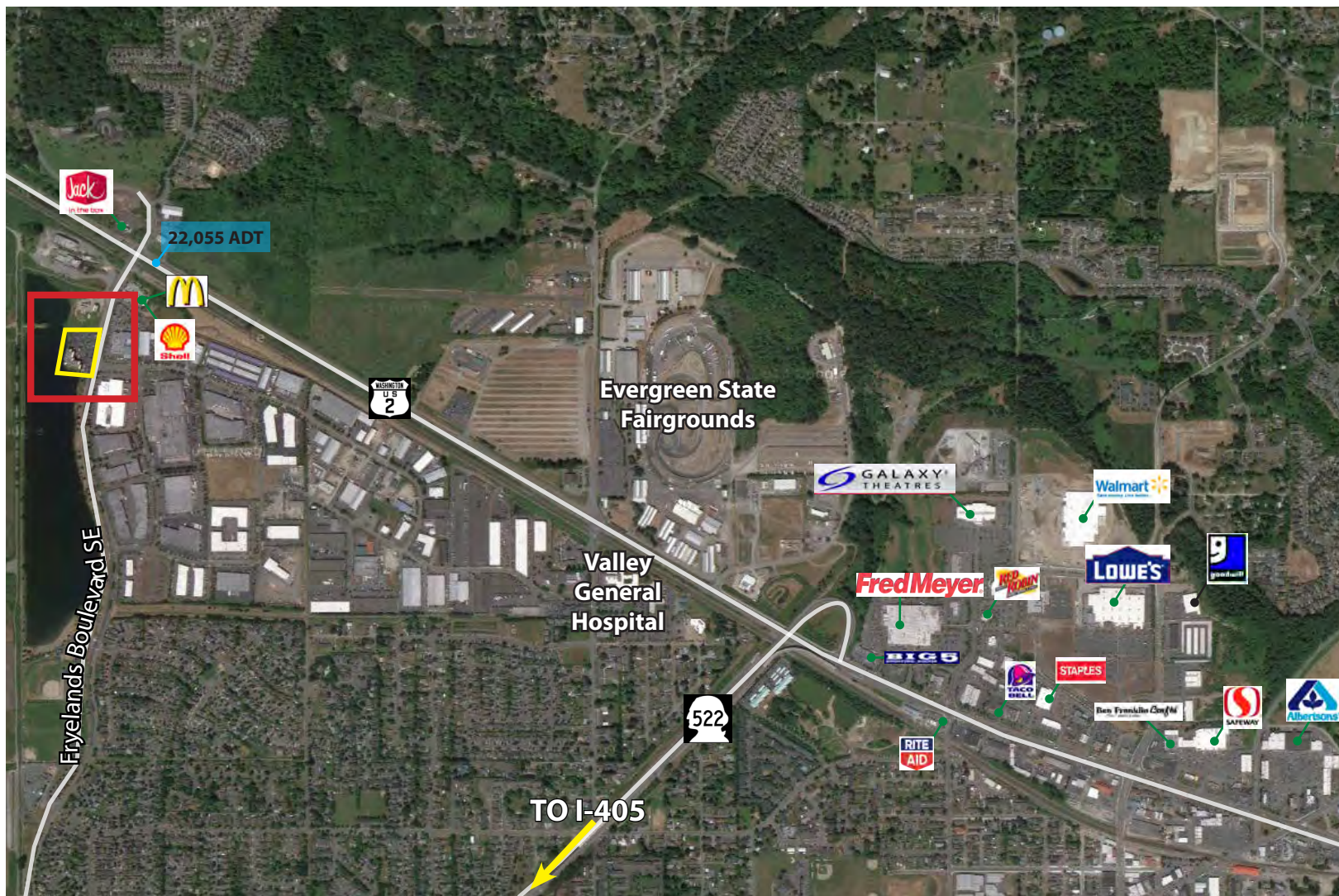


Rosen~Harbottle Commercial Real Estate | P.O. Box 5003 Bellevue, WA 98009-5003  
phone: (425) 454-3030 fax: (425) 454-6705 | [www.rosenharbottle.com](http://www.rosenharbottle.com)

The information provided has been obtained from sources believed reliable. While we do not doubt its accuracy, we have not verified and make no guarantee, warranty or representation about it. It is your sole responsibility to independently confirm its accuracy and completeness.

# LAKE TYE BUILDING

14090 Fryelands Boulevard, Monroe, WA 98272



For more information, contact:

ROSEN~HARBOTTLE  
COMMERCIAL REAL ESTATE

**Caleb Farnworth, CCIM**  
(425) 289-2235  
calebf@rosenharbottle.com

www.rosenharbottle.com

Rosen~Harbottle Commercial Real Estate | P.O. Box 5003 Bellevue, WA 98009-5003  
phone: (425) 454-3030 fax: (425) 454-6705 | www.rosenharbottle.com

The information provided has been obtained from sources believed reliable. While we do not doubt its accuracy, we have not verified and make no guarantee, warranty or representation about it. It is your sole responsibility to independently confirm its accuracy and completeness.