

# FREEWAY CENTER

1327 112th Street SE, Everett, WA 98208



## NEW Left Hand Turn Signal!

946 SF Available

\$19.00/SF, NNN

### FEATURES:

- Endcap Space with Signage on 2 Faces of the Building
- High Ceilings & Extended Window Line
- Exposure to I-5 | 340,000+ Cars per Day
- Access to the 'Park & Ride' at 112th Street
- Strong Neighborhood Center Location
- "Vanilla-Shell" Condition Provided by Landlord
- New Retail Construction
- Nearby Retail Includes Costco, WinCo, Safeway, Bartell's, 24 Hour Fitness, Les Schwab & Silver Lake Park

### Current Tenant Mix:

Giggling Guest Childcare, Sylvan Learning Center, Amaya's Flooring, The Ceramic Place, Piroshky & Crepes Cafe & 30/10 Weight Loss

For more information, contact:

**ROSEN~HARBOTTLE  
COMMERCIAL REAL ESTATE**

**Caleb Farnworth, CCIM**  
(425) 289-2235  
calebf@rosenharbottle.com

**Brian Stewart**  
(425) 289-2222  
brians@rosenharbottle.com

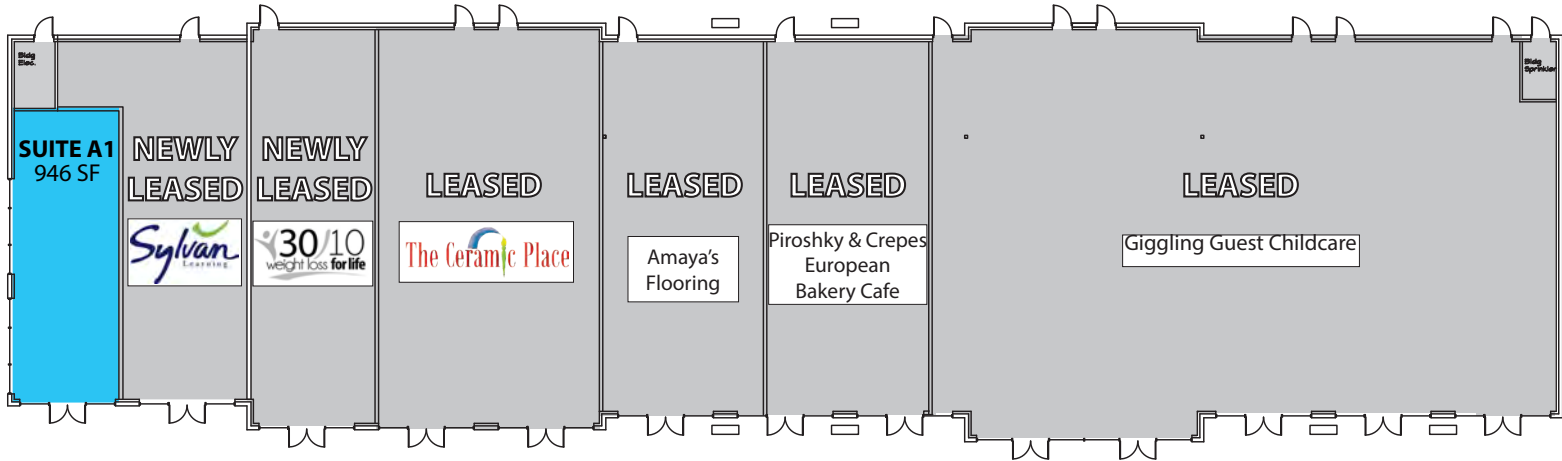
www.rosenharbottle.com

Rosen-Harbottle Commercial Real Estate | P.O. Box 5003 Bellevue, WA 98009-5003  
phone: (425) 454-3030 fax: (425) 454-6705 | www.rosenharbottle.com

The information provided has been obtained from sources believed reliable. While we do not doubt its accuracy, we have not verified and make no guarantee, warranty or representation about it. It is your sole responsibility to independently confirm its accuracy and completeness.

# FREEWAY CENTER

1327 112th Street SE, Everett, WA 98208



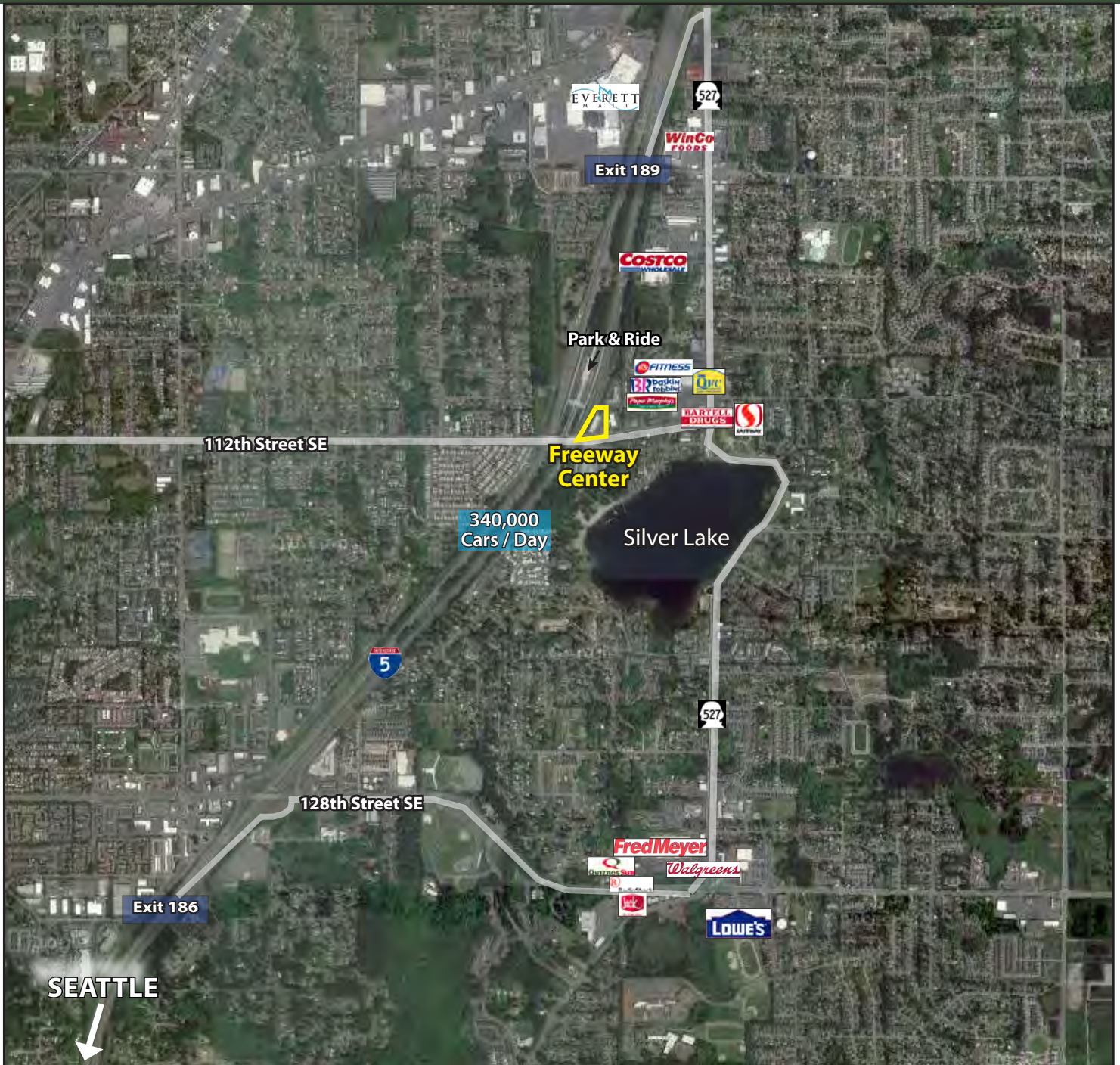
Rosen-Harbottle Commercial Real Estate | P.O. Box 5003 Bellevue, WA 98009-5003  
phone: (425) 454-3030 fax: (425) 454-6705 | [www.rosenharbottle.com](http://www.rosenharbottle.com)

The information provided has been obtained from sources believed reliable. While we do not doubt its accuracy, we have not verified and make no guarantee, warranty or representation about it. It is your sole responsibility to independently confirm its accuracy and completeness.



# FREEWAY CENTER

1327 112th Street SE, Everett, WA 98208



For more information, please contact:

**Caleb Farnworth, CCIM**

(425) 289-2235

calebf@rosenharbottle.com

**Brian Stewart**

(425) 289-2222

brians@rosenharbottle.com

Rosen-Harbottle Commercial Real Estate | P.O. Box 5003 Bellevue, WA 98009-5003  
phone: (425) 454-3030 fax: (425) 454-6705 | [www.rosenharbottle.com](http://www.rosenharbottle.com)

The information provided has been obtained from sources believed reliable. While we do not doubt its accuracy, we have not verified and make no guarantee, warranty or representation about it. It is your sole responsibility to independently confirm its accuracy and completeness.