

RH Tech Center II

19803 North Creek Parkway N, Bothell, WA 98011

\$1.00/SF BROKER BONUS*



BUILDING SIGNAGE AVAILABLE

3,900 SF Available

\$17.50/SF, NNN

FEATURES:

- Corporate, Class A Image
- Prestigious North Creek Location
- Directly Adjacent to Bright Horizons, Childcare, Sports Fields & Jogging Trail
- 1 Block from Restaurants & Retail
- Quick Access to I-405, SR-522 & Downtown Bothell
- Corporate Neighbors Include Google, AT&T, T-Mobile & Puget Sound Energy

*Broker Bonus through 1/31/2016 on deals for 3+ years



For more information, contact:

ROSEN~HARBOTTLE
COMMERCIAL REAL ESTATE

Brian Stewart

(425) 289-2222

brians@rosenharbottle.com

Caleb Farnworth, CCIM

(425) 289-2235

calebf@rosenharbottle.com

www.rosenharbottle.com

Rosen~Harbottle Commercial Real Estate | P.O. Box 5003 Bellevue, WA 98009-5003
phone: (425) 454-3030 fax: (425) 454-6705 | www.rosenharbottle.com

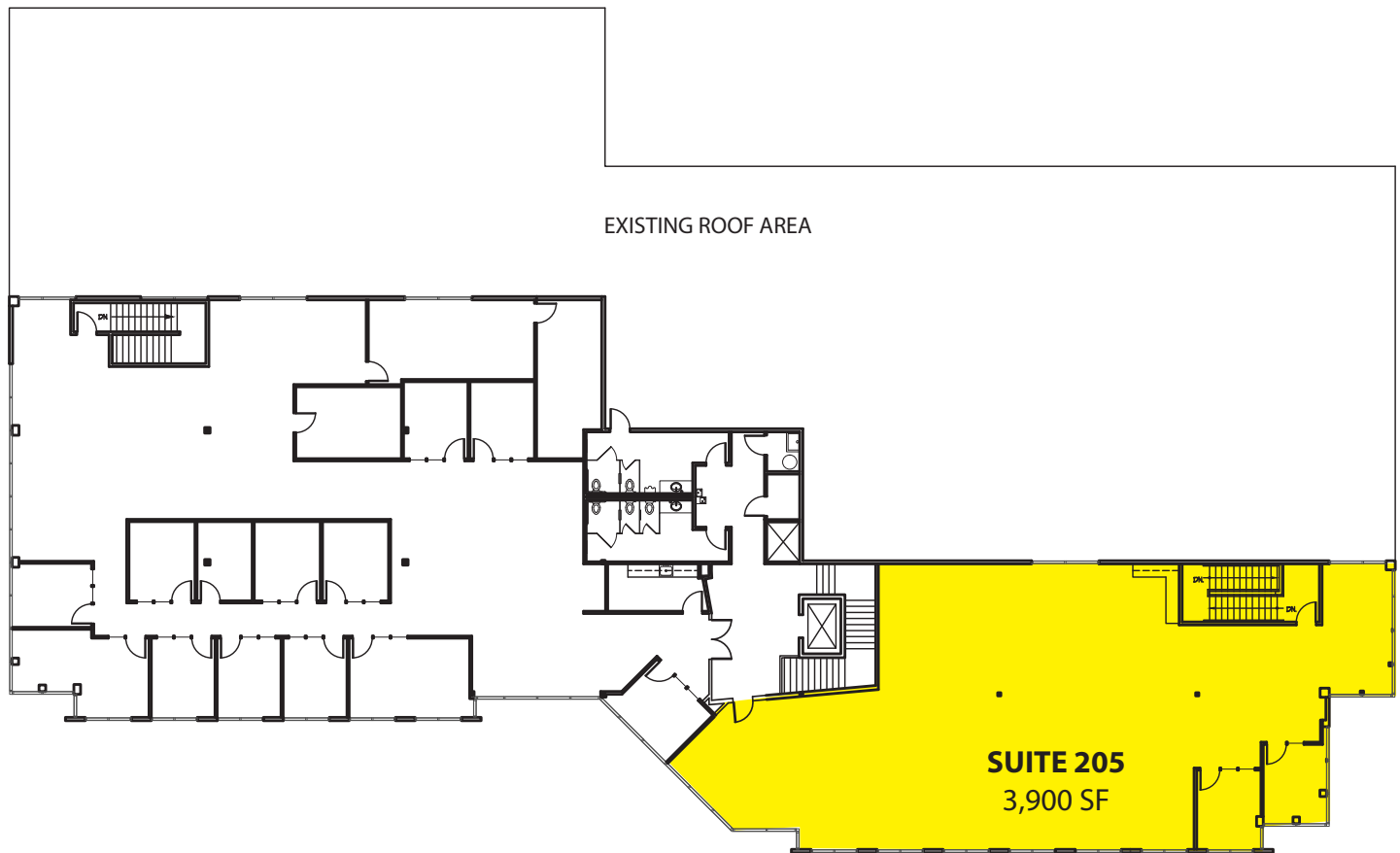
The information provided has been obtained from sources believed reliable. While we do not doubt its accuracy, we have not verified and make no guarantee, warranty or representation about it. It is your sole responsibility to independently confirm its accuracy and completeness.

RH Tech Center II

19803 North Creek Parkway N, Bothell, WA 98011

Second Floor

| Suite | Square Feet |
|-------|-------------|
| 205 | 3,900 SF |



For more information, contact:

ROSEN~HARBOTTLE COMMERCIAL REAL ESTATE

Brian Stewart
(425) 289-2222
brians@rosenharbottle.com

Caleb Farnworth, CCIM
(425) 289-2235
calebf@rosenharbottle.com

www.rosenharbottle.com

Rosen~Harbottle Commercial Real Estate | P.O. Box 5003 Bellevue, WA 98009-5003
phone: (425) 454-3030 fax: (425) 454-6705 | www.rosenharbottle.com

The information provided has been obtained from sources believed reliable. While we do not doubt its accuracy, we have not verified and make no guarantee, warranty or representation about it. It is your sole responsibility to independently confirm its accuracy and completeness.



RH Tech Center II

19803 North Creek Parkway N, Bothell, WA 98011



Corporate Neighbors

- | | | |
|----------------------------|---------------|--------------------------------|
| 1. Tetra Tech | 6. AMEC | 11. United Healthcare Services |
| 2. T-Mobile | 7. Talentwise | 12. Progressive, Banner Bank |
| 3. Puget Sound Energy | 8. State Farm | 13. Vertafore |
| 4. Valeant Pharmaceuticals | 9. Google | |
| 5. General Dynamics | 10. AT&T | |

Rosen~Harbottle Commercial Real Estate | P.O. Box 5003 Bellevue, WA 98009-5003
phone: (425) 454-3030 fax: (425) 454-6705 | www.rosenharbottle.com

The information provided has been obtained from sources believed reliable. While we do not doubt its accuracy, we have not verified and make no guarantee, warranty or representation about it. It is your sole responsibility to independently confirm its accuracy and completeness.