

WAREHOUSE  
LEASE



## LYNNWOOD EAST BUSINESS PARK, Building B

2031 196th Street SW | Lynnwood, WA

Caleb Farnworth, CCIM

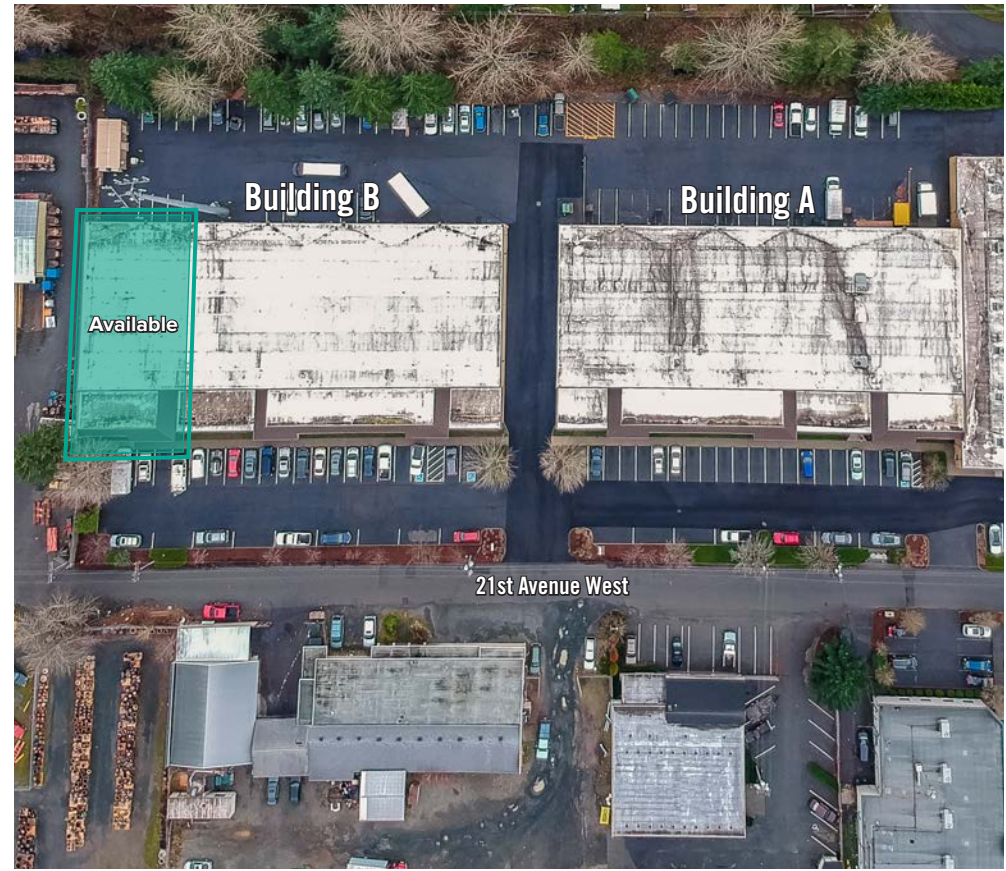
425.289.2235

calebf@rosenharbottle.com

425.454.3030  
rosenharbottle.com

PO Box 5003  
Bellevue, WA 98009 - 5003





# WAREHOUSE/OFFICE NEAR I-5 & I-405 INTERSECTION

**6,495 SF (1,070 SF ofc) Available**

**Rent: \$6,495/Month | NNN: \$0.36/SF**

## FEATURES:

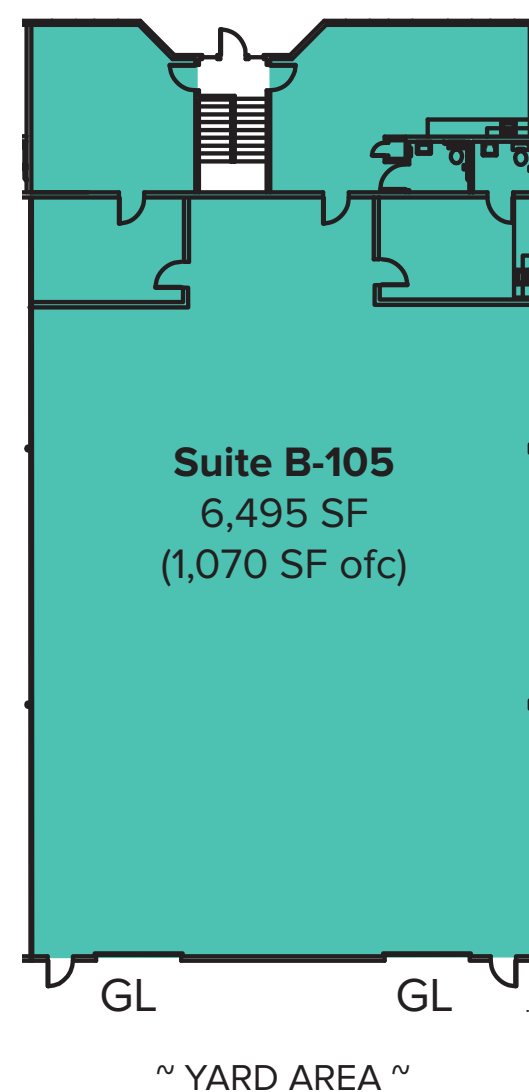
- Professional Image
- Easy Ingress/Egress
- Abundant Parking
- Monument Signage and Building Signage Available
- Immediate Access to I-5, I-405, and SR-525

# B-105 FLOOR PLAN

## FEATURES

---

- **Available 8/1/2020**
- **6,495 SF (1,070 SF ofc)**
- **\$6,495/Month, NNN**
- 2 Private Offices
- Break Room with Kitchenette
- 2 Restrooms
- Clear Span Warehouse
- 2 Grade-Level Doors
- Potential for Fenced Yard Area



# LOCATION MAP



## DRIVE TIMES:

I-5: 2 Min.

I-405: 3 Min.

Alderwood Mall: 4 Min.

Seattle: 21 Min.

Bellevue: 20 Min.