

CLEARVIEW PLAZA

17408 SR-9 SE, Snohomish, WA 98296

OFFICE SPACE ALONG SR-9

1,001 SF Available

\$1,800/Month, Gross

PROPERTY DETAILS:

- Anchor tenants include Safeway, McDonald's, Starbucks, Subway, Providence Family Medicine, and O'Reilly Auto Parts
- Immediate access to SR-9
- Abundant parking

SUITE 201 DETAILS:

- **Available now**
- Second floor office space
- Open work area
- Private office
- 1 restroom
- Kitchenette

To Schedule a tour/Request Info, contact:

Caleb Farnworth, CCIM

425.289.2235

calebf@rosenharbottle.com

Stossi Tsantilas

425.279.7943

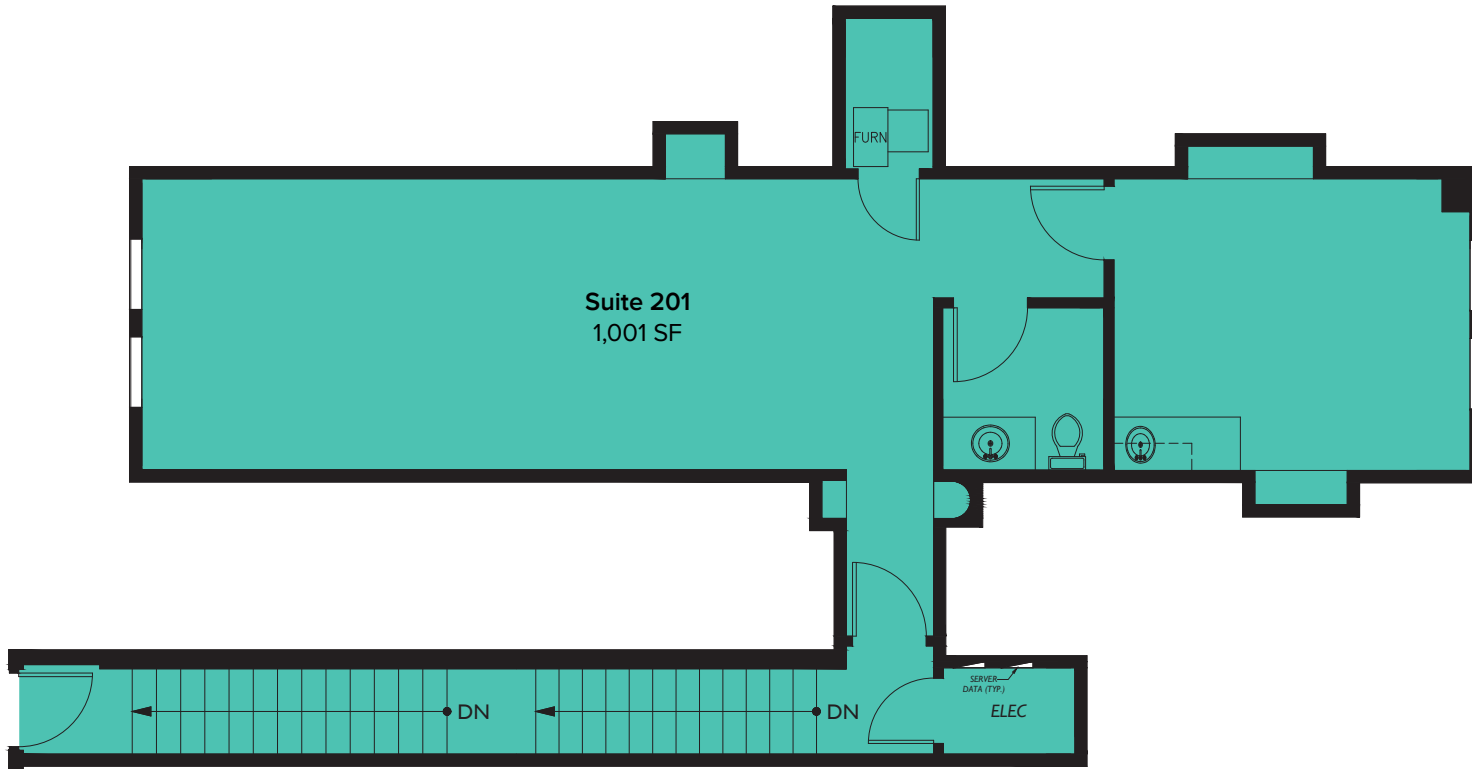
stossit@rosenharbottle.com



The information provided herein has been obtained from sources believed to be reliable, but no representation or warranty, express or implied, is made with respect to the accuracy or completeness of any such information. Each prospective buyer or tenant should independently investigate, evaluate and verify all information provided herein and any other matters deemed material. Please consult your attorney, tax advisor or other professional advisor. The terms of sale or lease set forth herein are subject to change or withdrawal at any time and without notice.



SUITE 201 FLOOR PLAN



The information provided herein has been obtained from sources believed to be reliable, but no representation or warranty, express or implied, is made with respect to the accuracy or completeness of any such information. Each prospective buyer or tenant should independently investigate, evaluate and verify all information provided herein and any other matters deemed material. Please consult your attorney, tax advisor or other professional advisor. The terms of sale or lease set forth herein are subject to change or withdrawal at any time and without notice.



The information provided herein has been obtained from sources believed to be reliable, but no representation or warranty, express or implied, is made with respect to the accuracy or completeness of any such information. Each prospective buyer or tenant should independently investigate, evaluate and verify all information provided herein and any other matters deemed material. Please consult your attorney, tax advisor or other professional advisor. The terms of sale or lease set forth herein are subject to change or withdrawal at any time and without notice.

LOCATION MAP

