

# KENT BUSINESS CAMPUS - BLDG A

STAND-ALONE RETAIL | OFFICE



823 N Central Avenue, Kent, WA 98032

**Grant Rubenstein**  
(425) 289-2220  
grant@rosenharbottle.com

**RH** ROSEN  
HARBOTTLE  
COMMERCIAL REAL ESTATE

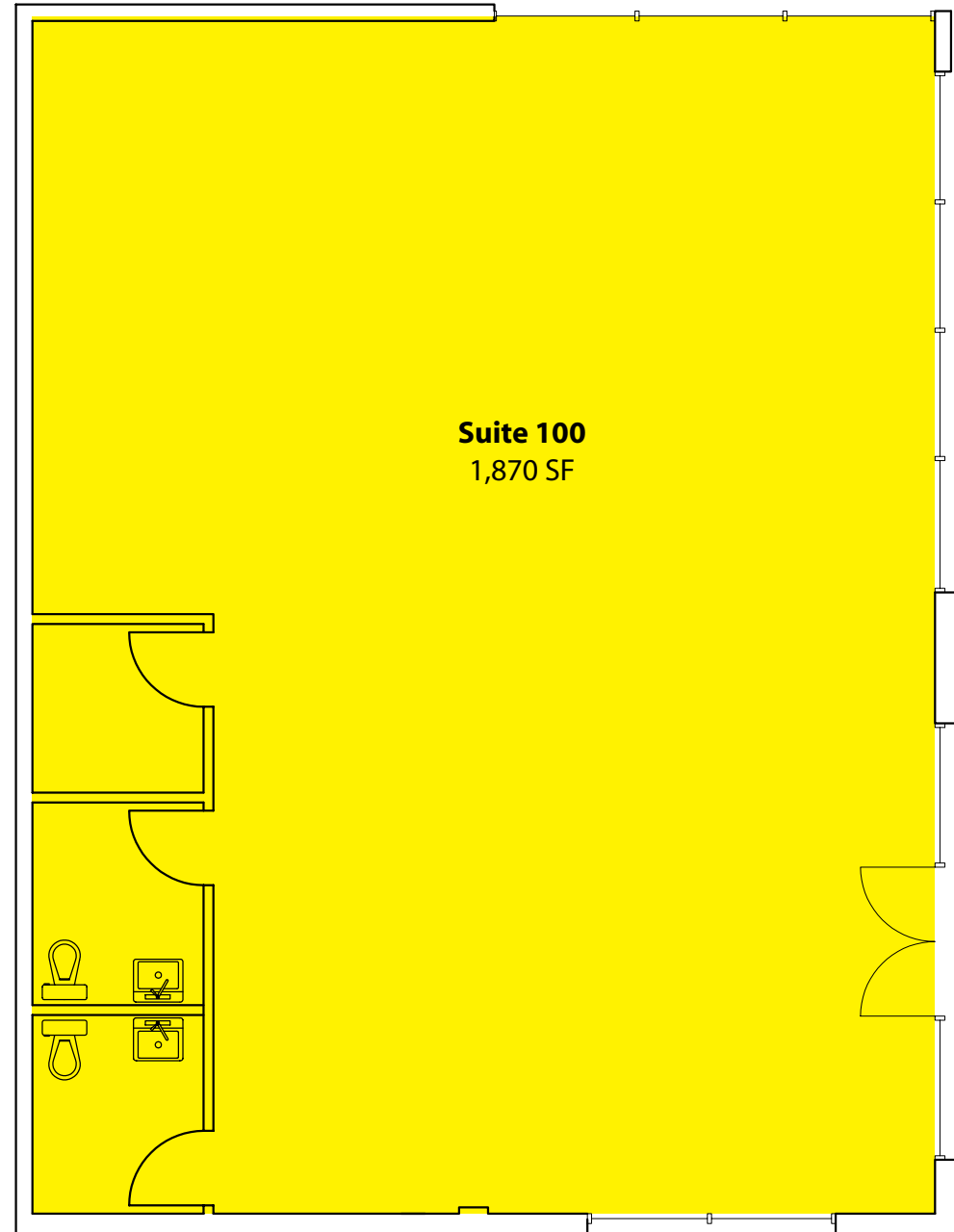
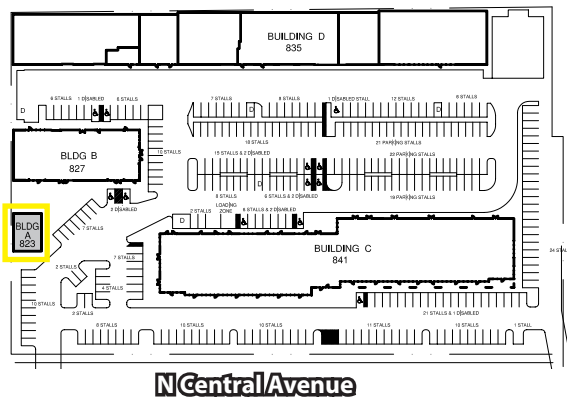
# STAND-ALONE RETAIL | OFFICE BUILDING

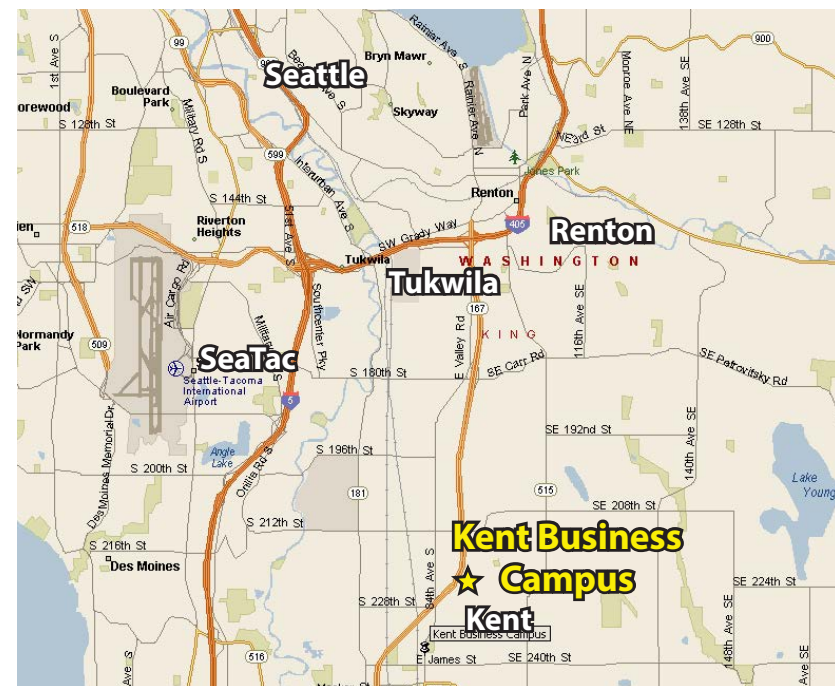
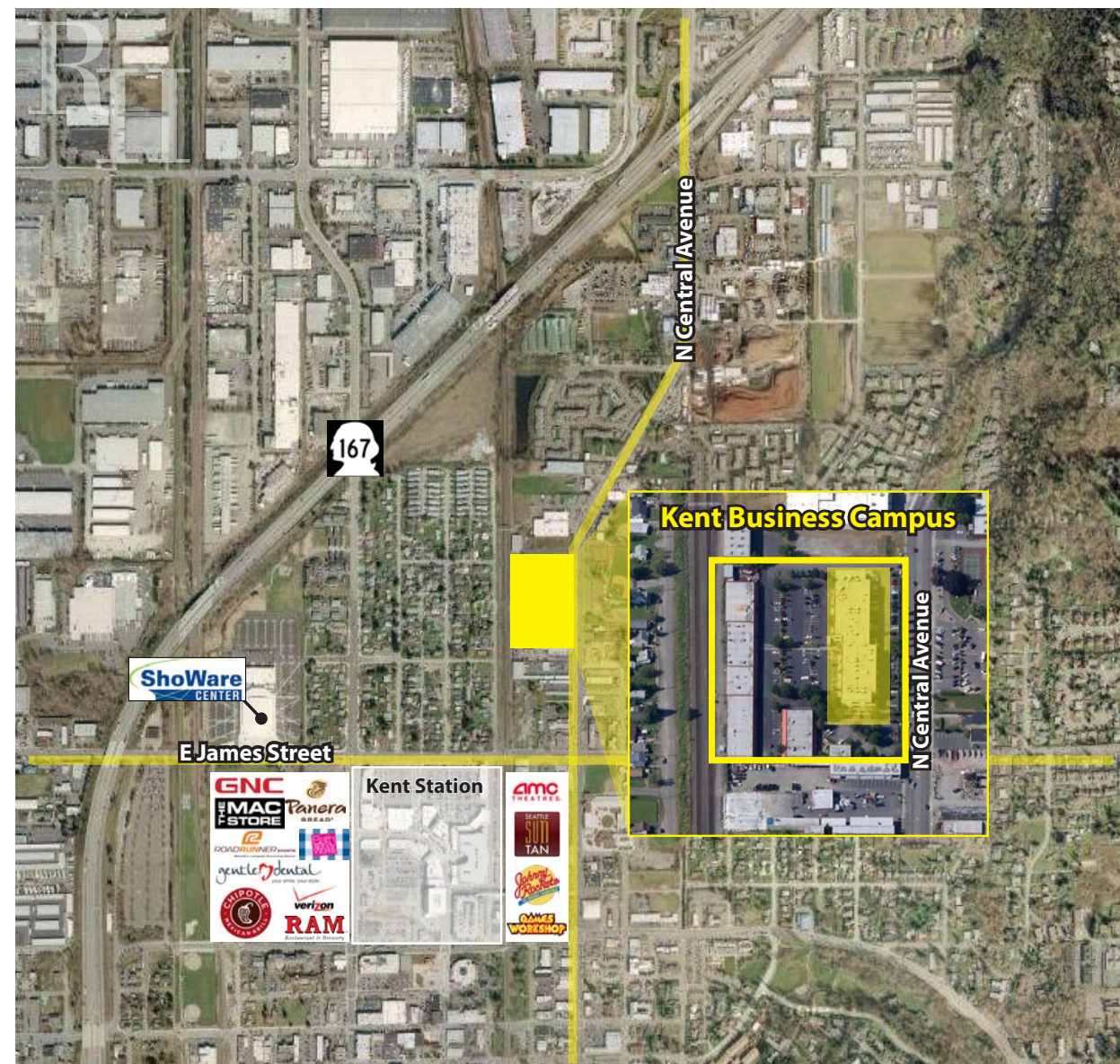
## 1,870 SF Available

### \$18.00/SF, NNN

#### FEATURES:

- Frontage on N Central Avenue
- Building Signage
- Quick Access to SR 167, SR 516 & Downtown Kent
- Three Blocks from Kent Station & Retail Amenities
- On-Site Amenities: Nail Salon & Teriyaki Restaurant
- Concrete, Steel & Glass Construction





For more information, contact:

**ROSEN~HARBOTTLE  
COMMERCIAL REAL ESTATE**

**Grant Rubenstein**  
(425) 289-2220  
grant@rosenharbottle.com  
www.rosenharbottle.com