

# EVERGREEN INDUSTRIAL CENTER

19510 144th Avenue NE, Woodinville, WA 98072

**ENDCAP SPACE AVAILABLE**



## RARE SMALL WAREHOUSE

Suite	Total SF	Office SF	Whse SF	Rent/ Month	NNN	Total/ Month	Avail
A-6	2,333 SF	1,584 SF	749 SF	\$2,648	\$653	\$3,301	8/1/16

### FEATURES:

- \$1.35/SF Office | \$ 0.68/SF Whse, NNN
- Ideal Uses: Distribution, Manufacturing, Storage, Winery, & Brewery (Recreation Use Considered)
- Visibility Facing 144th Avenue NE
- Quick Access to SR 522 & I-405
- Oversized GL Loading
- 20' - 24' Clear Height
- Sprinklered & 3-Phase Power



ROSEN | HARBOTTLE

For more information, contact:

**ROSEN~HARBOTTLE  
COMMERCIAL REAL ESTATE**

**Caleb Farnworth, CCIM**  
(425) 289-2235  
calebf@rosenharbottle.com

[www.rosenharbottle.com](http://www.rosenharbottle.com)

Rosen~Harbottle Commercial Real Estate | P.O. Box 5003 Bellevue, WA 98009-5003  
phone: (425) 454-3030 fax: (425) 454-6705 | [www.rosenharbottle.com](http://www.rosenharbottle.com)

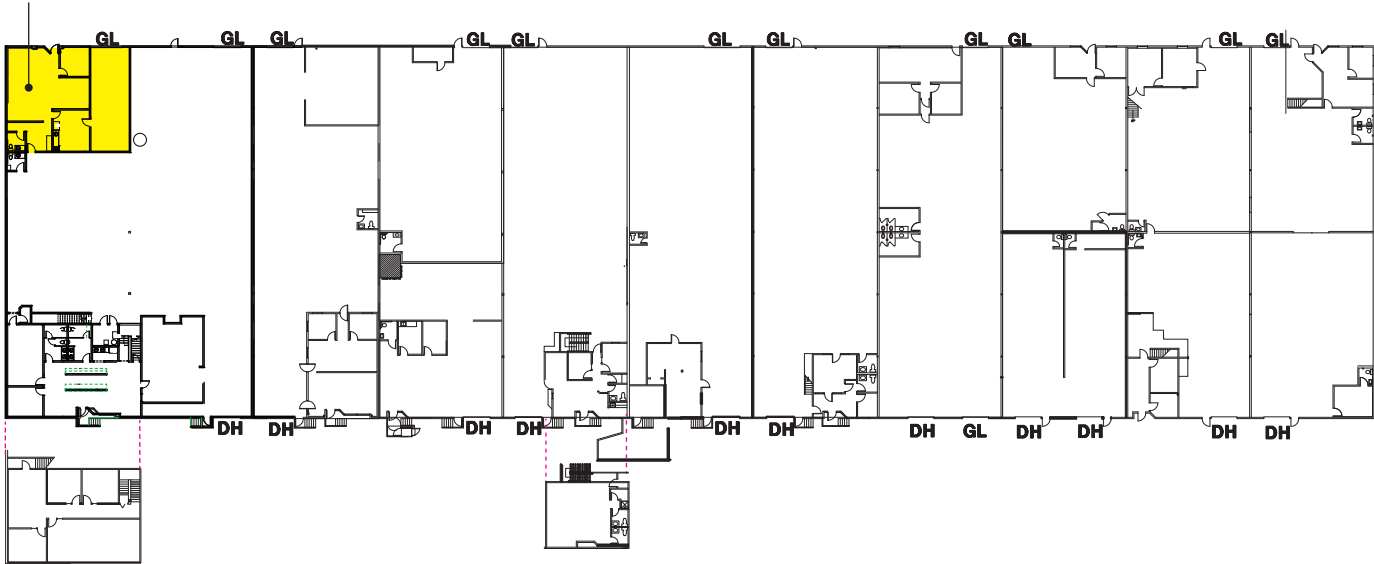
The information provided has been obtained from sources believed reliable. While we do not doubt its accuracy, we have not verified and make no guarantee, warranty or representation about it. It is your sole responsibility to independently confirm its accuracy and completeness.

# EVERGREEN INDUSTRIAL CENTER

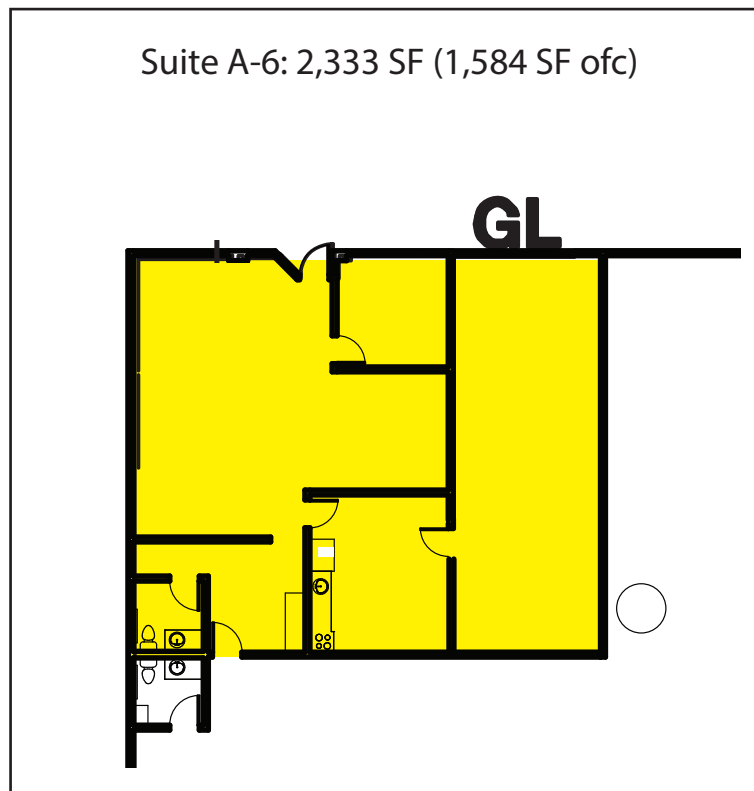
19510 144th Avenue NE, Woodinville, WA 98072

## Available Space

Suite A-6  
2,333 SF



Suite A-6: 2,333 SF (1,584 SF ofc)



Rosen-Harbottle Commercial Real Estate | P.O. Box 5003 Bellevue, WA 98009-5003  
phone: (425) 454-3030 fax: (425) 454-6705 | [www.rosenharbottle.com](http://www.rosenharbottle.com)

The information provided has been obtained from sources believed reliable. While we do not doubt its accuracy, we have not verified and make no guarantee, warranty or representation about it. It is your sole responsibility to independently confirm its accuracy and completeness.

# EVERGREEN INDUSTRIAL CENTER

19510 144th Avenue NE, Woodinville, WA 98072



- |                      |                              |                              |                             |                       |
|----------------------|------------------------------|------------------------------|-----------------------------|-----------------------|
| 1. Baer Winery       | 9. Efeste                    | 17. Welcome Road Winery      | 25. Chateau Rollat Winery   | 33. Covington Cellars |
| 2. Pondera Winery    | 10. Matthews Estate          | 18. Gard Vintners            | 26. Force Majeure Vineyards | 34. Barons Winery     |
| 3. Sparkman Cellars  | 11. Flying Dreams Winery     | 19. Sol Stone Winery         | 27. Auclair Winery          | 35. Stevens Winery    |
| 4. Kestrel Vintners  | 12. Robert Ramsay Cellars    | 20. Avennia Winery           | 28. Aspenwood Cellars       | 36. Hestia Cellars    |
| 5. Gorman Winery     | 13. Cullin Hills Winery      | 21. Pacific Distillery       | 29. JP Trodden Distilling   | 37. Pomum Cellars     |
| 6. Warr-King Wines   | 14. Refuge & Prospect Winery | 22. Kevin White Winery       | 30. DiStefano Winery        |                       |
| 7. Patterson Cellars | 15. Vessel                   | 23. Convergence Zone Cellars | 31. Sheridan Vineyard       |                       |
| 8. Alta Cellars      | 16. Armstrong Family Winery  | 24. Finn Hill Winery         | 32. Two Vintners            |                       |

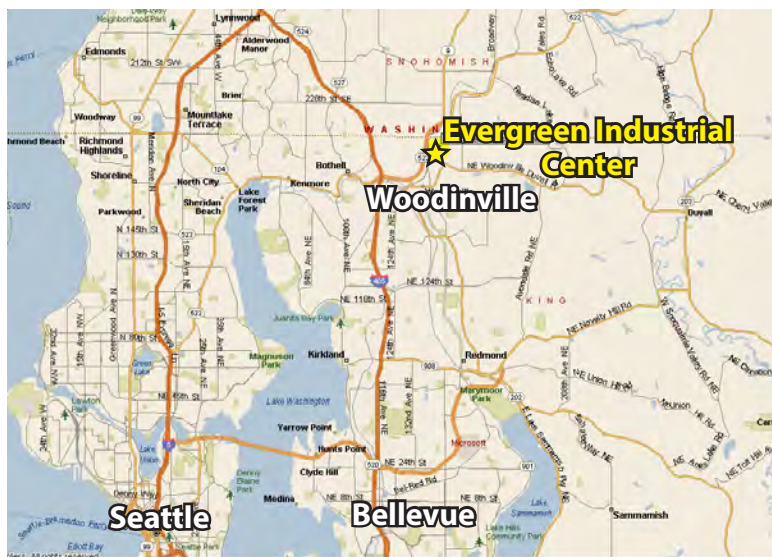
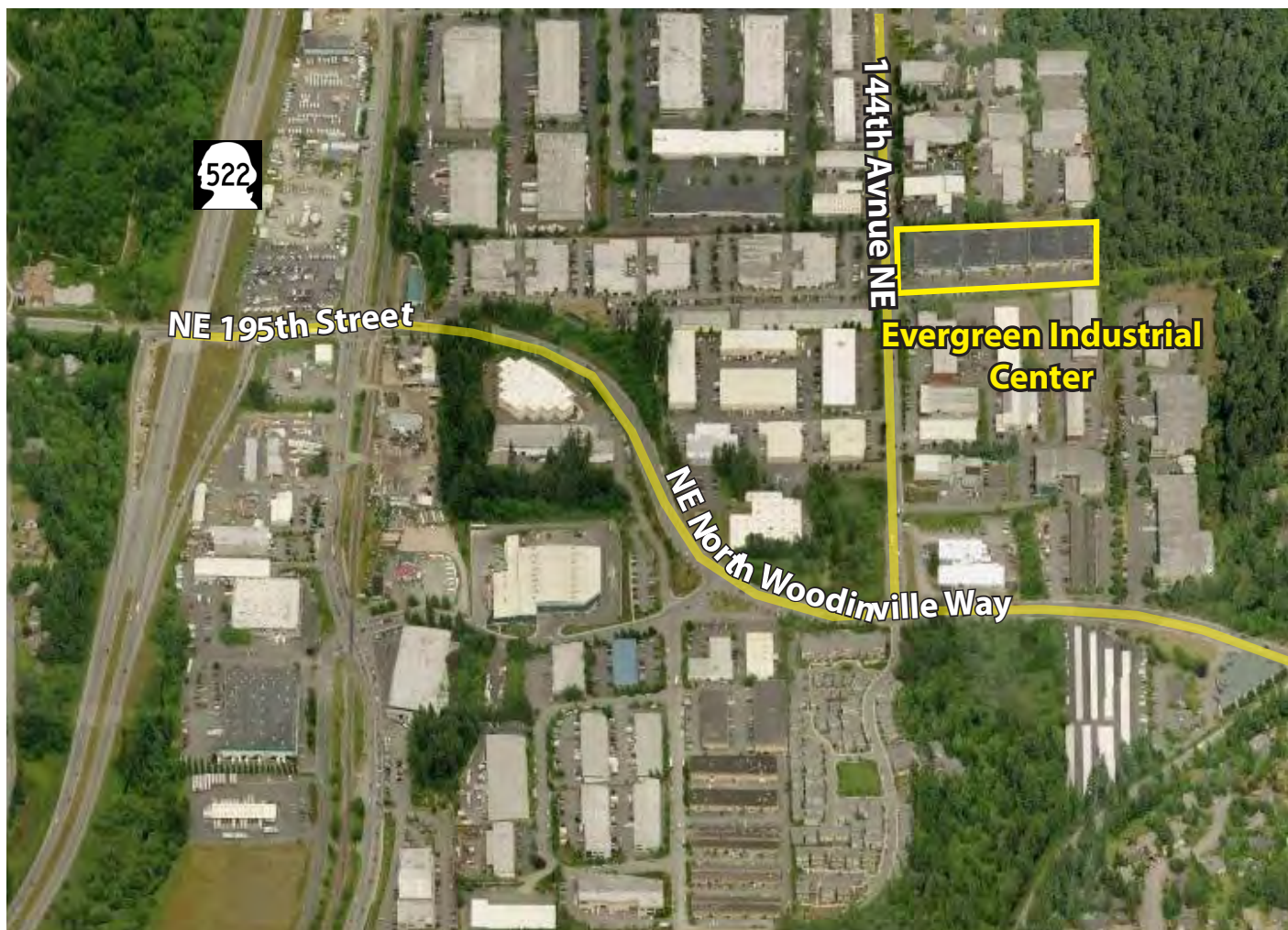
Rosen-Harbottle Commercial Real Estate | P.O. Box 5003 Bellevue, WA 98009-5003  
phone: (425) 454-3030 fax: (425) 454-6705 | [www.rosenharbottle.com](http://www.rosenharbottle.com)

The information provided has been obtained from sources believed reliable. While we do not doubt its accuracy, we have not verified and make no guarantee, warranty or representation about it. It is your sole responsibility to independently confirm its accuracy and completeness.

# EVERGREEN INDUSTRIAL CENTER

19510 144th Avenue NE, Woodinville, WA 98072

## LOCATION INFORMATION



For more information, contact:

**ROSEN~HARBOTTLE  
COMMERCIAL REAL ESTATE**

**Caleb Farnworth, CCIM**  
(425) 289-2235  
calebf@rosenharbottle.com

[www.rosenharbottle.com](http://www.rosenharbottle.com)

Rosen~Harbottle Commercial Real Estate | P.O. Box 5003 Bellevue, WA 98009-5003  
phone: (425) 454-3030 fax: (425) 454-6705 | [www.rosenharbottle.com](http://www.rosenharbottle.com)

The information provided has been obtained from sources believed reliable. While we do not doubt its accuracy, we have not verified and make no guarantee, warranty or representation about it. It is your sole responsibility to independently confirm its accuracy and completeness.