

Airport Commerce Center

11604 - 11710 AIRPORT ROAD, EVERETT, WA 98204



OFFICE/WHSE ON AIRPORT RD

Suite	Total SF	Rent/ Month	NNN	Total/ Month
B-400	1,746 SF	\$1,135	\$471	\$1,606

Notes: Clear span, shell warehouse with 1 GL.

FEATURES:

- Rare Flex Space Available
- Grade Level Loading
- Glass Storefront
- Quick Access to Paine Field, Hwy 99, and I-5
- 22' Clear Height
- Sprinklered Building



For more information, contact:

**ROSEN~HARBOTTLE
COMMERCIAL REAL ESTATE**

Grant Rubenstein

(425) 289-2220

grant@rosenharbottle.com

Caleb Farnworth, CCIM

(425) 289-2235

calebf@rosenharbottle.com

www.rosenharbottle.com

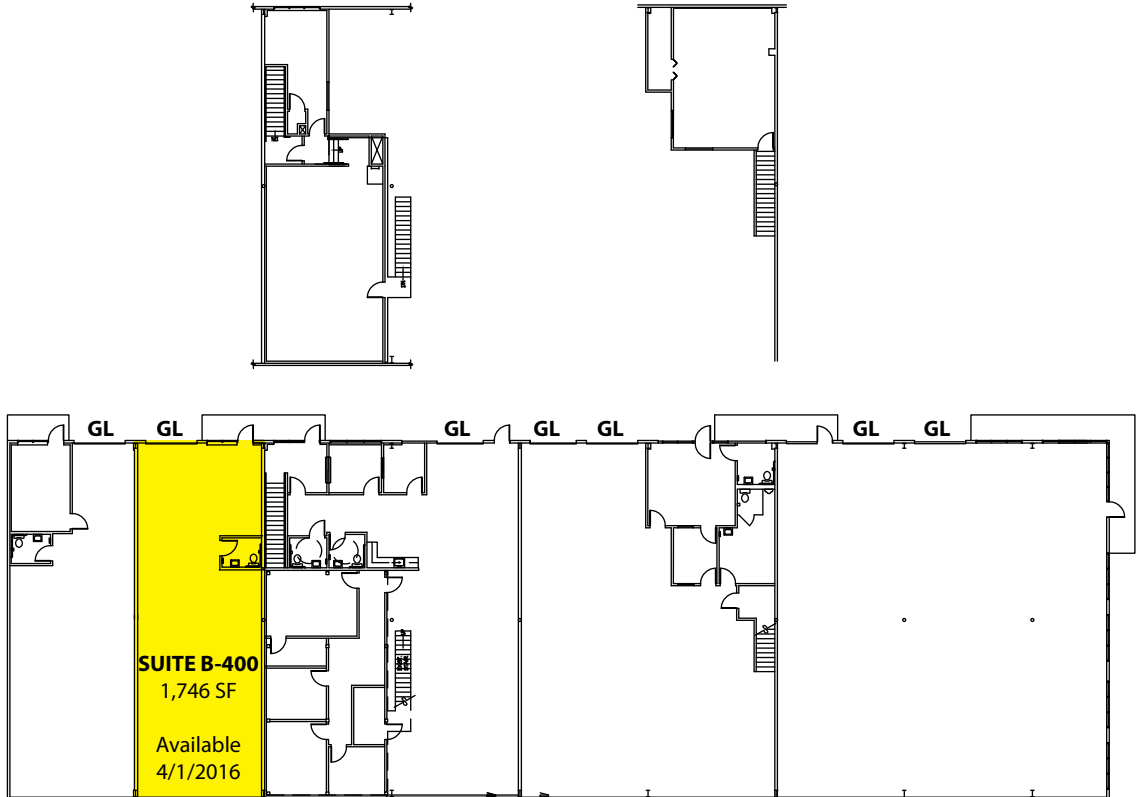
Rosen~Harbottle Commercial Real Estate | P.O. Box 5003 Bellevue, WA 98009-5003
phone: (425) 454-3030 fax: (425) 454-6705 | www.rosenharbottle.com

The information provided has been obtained from sources believed reliable. While we do not doubt its accuracy, we have not verified and make no guarantee, warranty or representation about it. It is your sole responsibility to independently confirm its accuracy and completeness.

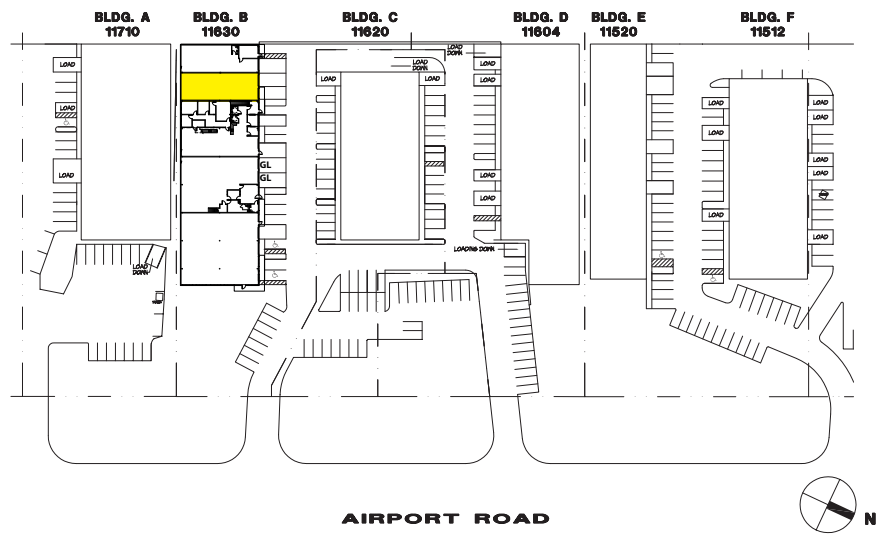
Airport Commerce Center

11604 - 11710 AIRPORT ROAD, EVERETT, WA 98204

Building B



Site Plan

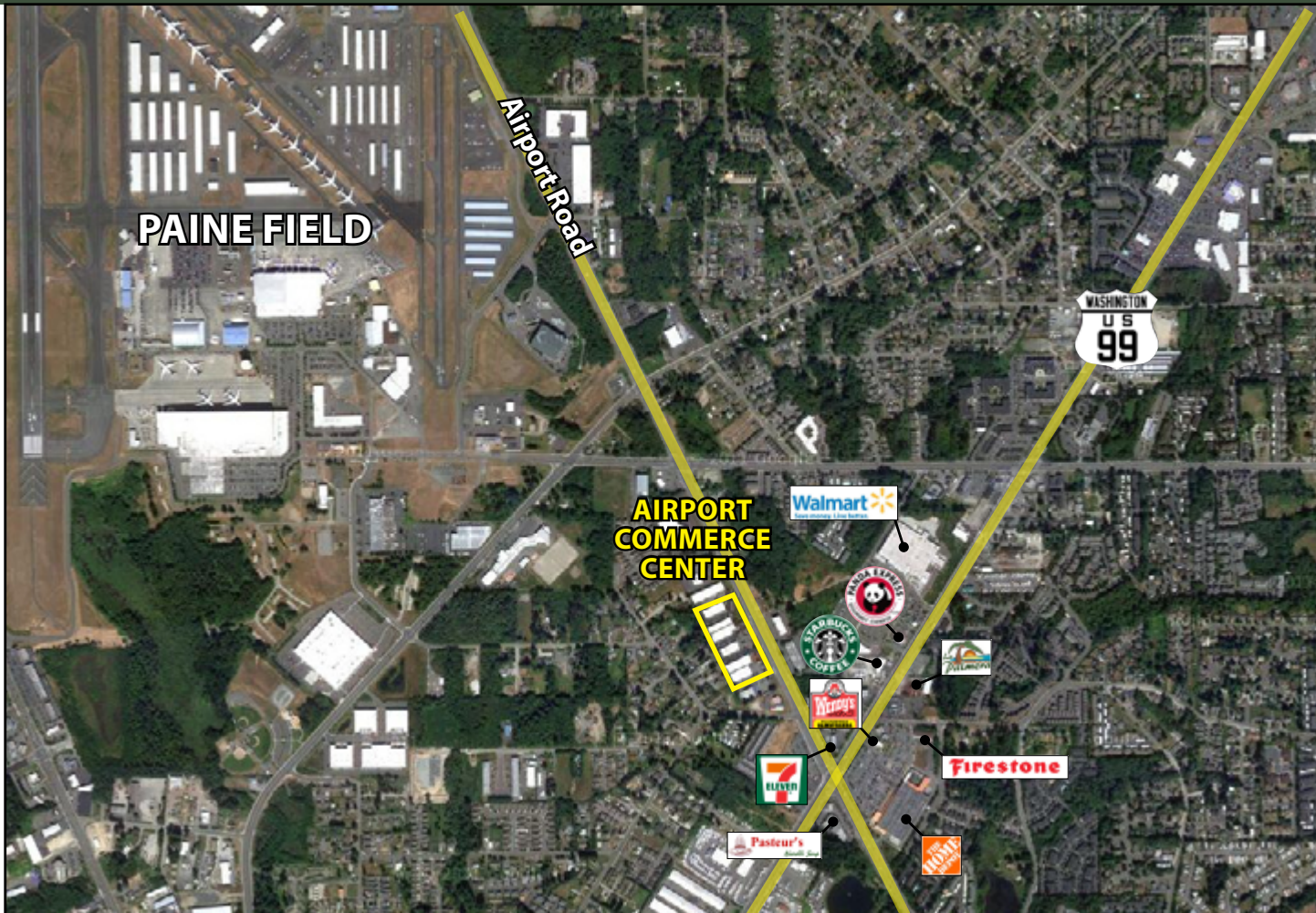


Rosen~Harbottle Commercial Real Estate | P.O. Box 5003 Bellevue, WA 98009-5003
phone: (425) 454-3030 fax: (425) 454-6705 | www.rosenharbottle.com

The information provided has been obtained from sources believed reliable. While we do not doubt its accuracy, we have not verified and make no guarantee, warranty or representation about it. It is your sole responsibility to independently confirm its accuracy and completeness.

Airport Commerce Center

11604 - 11710 AIRPORT ROAD, EVERETT, WA 98204



For more information, contact:

ROSEN~HARBOTTLE COMMERCIAL REAL ESTATE

Grant Rubenstein

(425) 289-2220

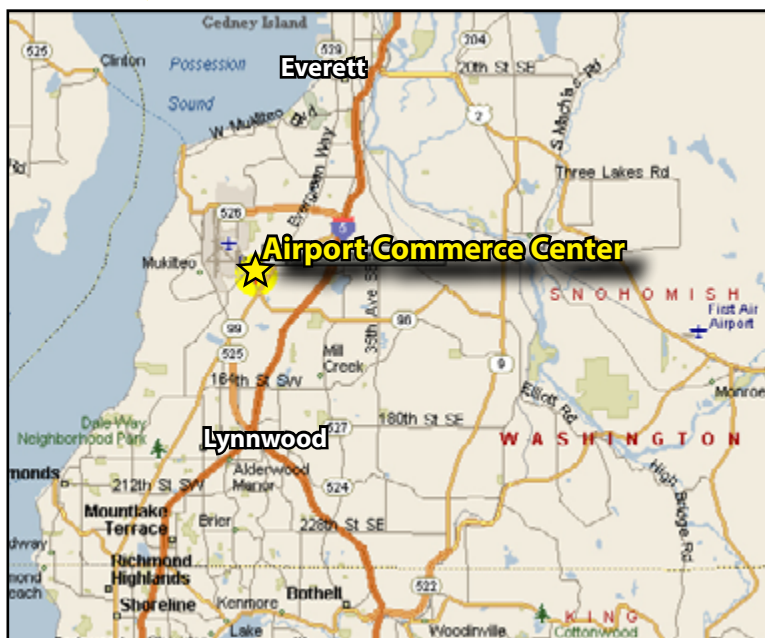
grant@rosenharbottle.com

Caleb Farnworth, CCIM

(425) 289-2235

calebf@rosenharbottle.com

www.rosenharbottle.com



Rosen~Harbottle Commercial Real Estate | P.O. Box 5003 Bellevue, WA 98009-5003
phone: (425) 454-3030 fax: (425) 454-6705 | www.rosenharbottle.com

The information provided has been obtained from sources believed reliable. While we do not doubt its accuracy, we have not verified and make no guarantee, warranty or representation about it. It is your sole responsibility to independently confirm its accuracy and completeness.