

OFFICE  
LEASE



# MEADOW CREEK OFFICE PARK

22500 - 22619 SE 64th Place | Issaquah, WA

**Brian Stewart**

425.289.2222

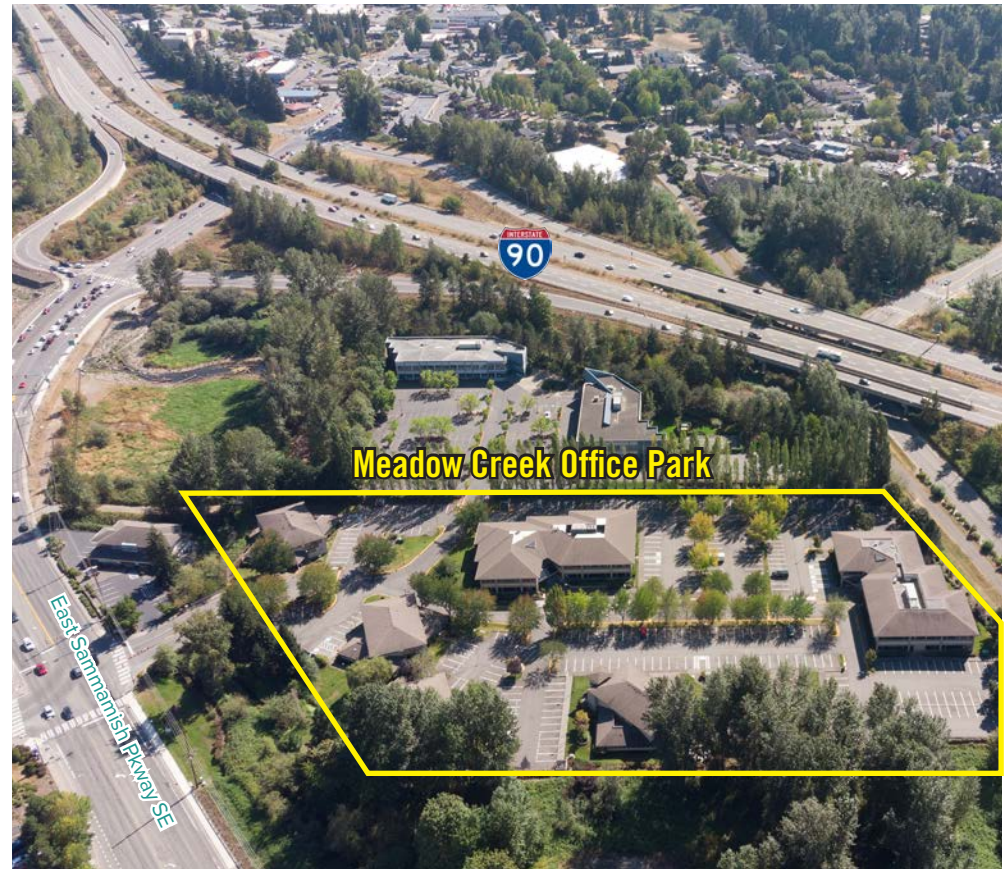
brians@rosenharbottle.com

425.454.3030  
rosenharbottle.com

PO Box 5003  
Bellevue, WA 98009 - 5003







# CLASS A OFFICE SPACES

**1,559 SF - 2,720 SF Available**

**\$28.00/SF, NNN**

## OFFICE PARK DETAILS:

- Minutes from Costco Headquarters
- Amazing Location off I-90 at Front St/E Lake Sammamish Pkwy
- Nearby Amenities Include Retailers, Grocers, Restaurants, Hospital & Parks
- Park-Like, Campus Setting with Free Surface Parking

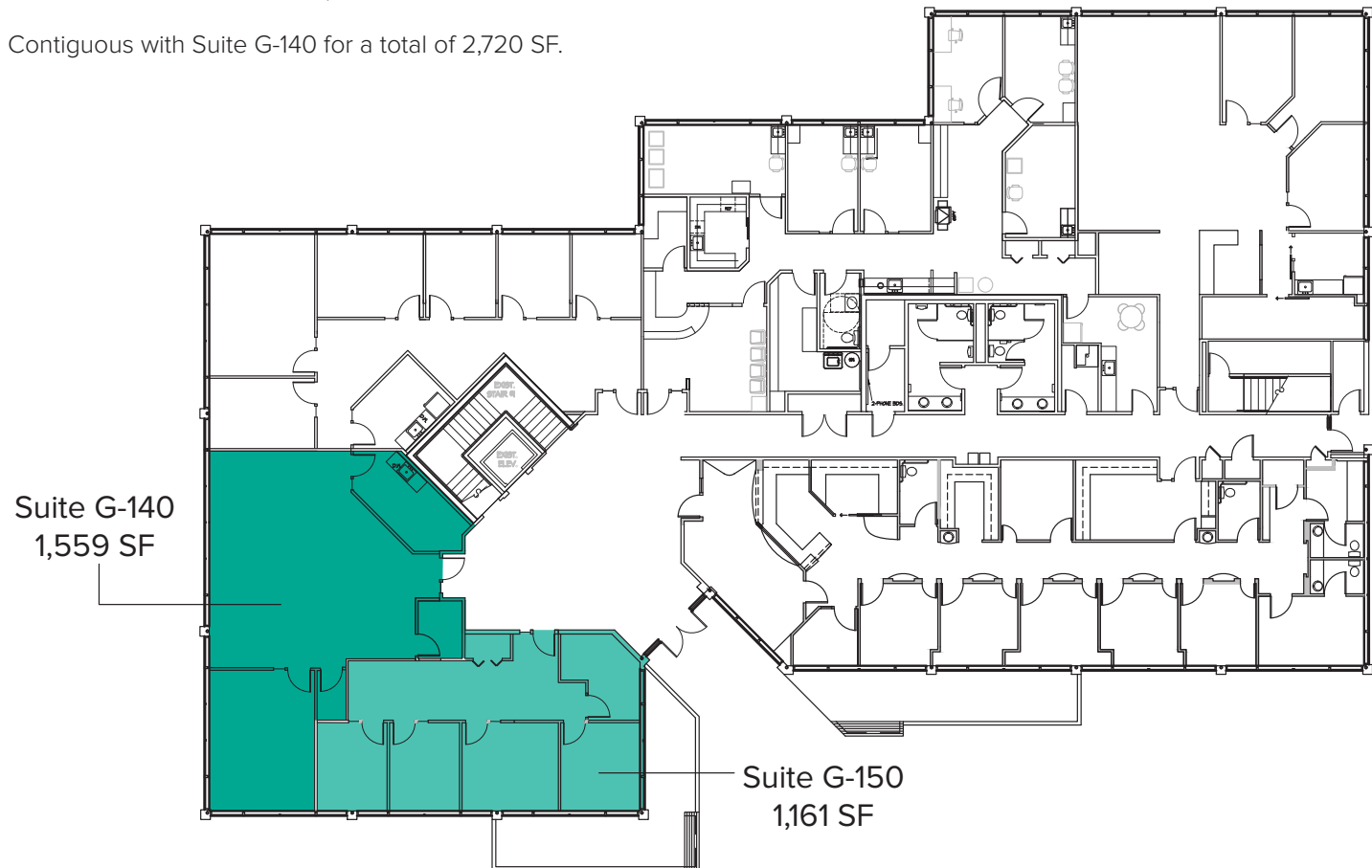
# BUILDING G (22500) FIRST LEVEL FLOOR PLAN

| Suite | Square Feet         | Rate            |
|-------|---------------------|-----------------|
| G-140 | 1,559 SF - 2,720 SF | \$28.00/SF, NNN |

1 Private Office, Break Room, Storage, and Open Work Space. Contiguous with Suite G-150 for a total of 2,720 SF. **Available Now.**

|       |                     |                 |
|-------|---------------------|-----------------|
| G-150 | 1,161 SF - 2,720 SF | \$28.00/SF, NNN |
|-------|---------------------|-----------------|

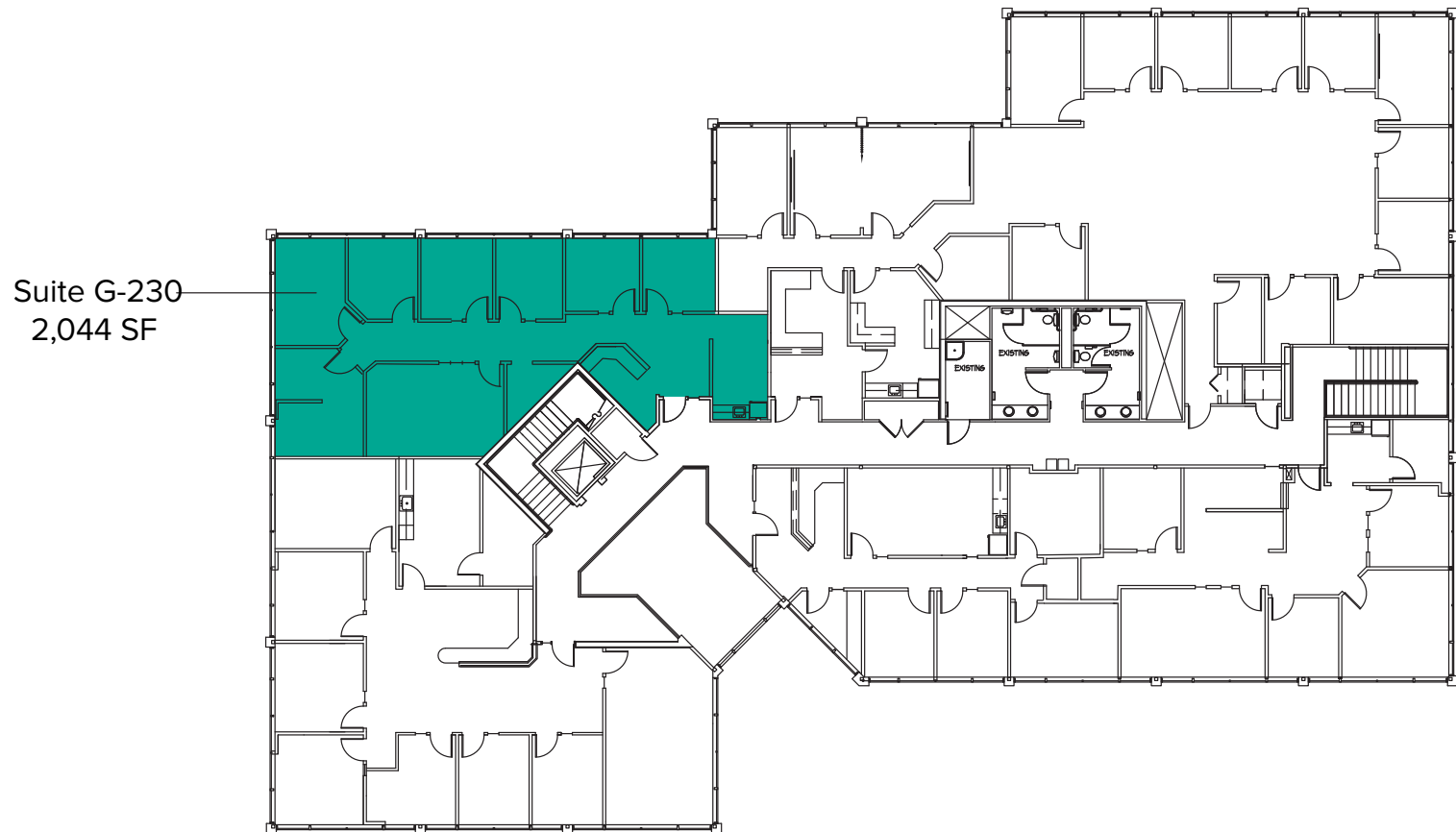
5 Private Offices and Open Work Area. Contiguous with Suite G-140 for a total of 2,720 SF. **Available Now.**



# BUILDING G (22500) SECOND LEVEL FLOOR PLAN

| Suite | Square Feet | Rate            |
|-------|-------------|-----------------|
| G-230 | 2,044 SF    | \$28.00/SF, NNN |

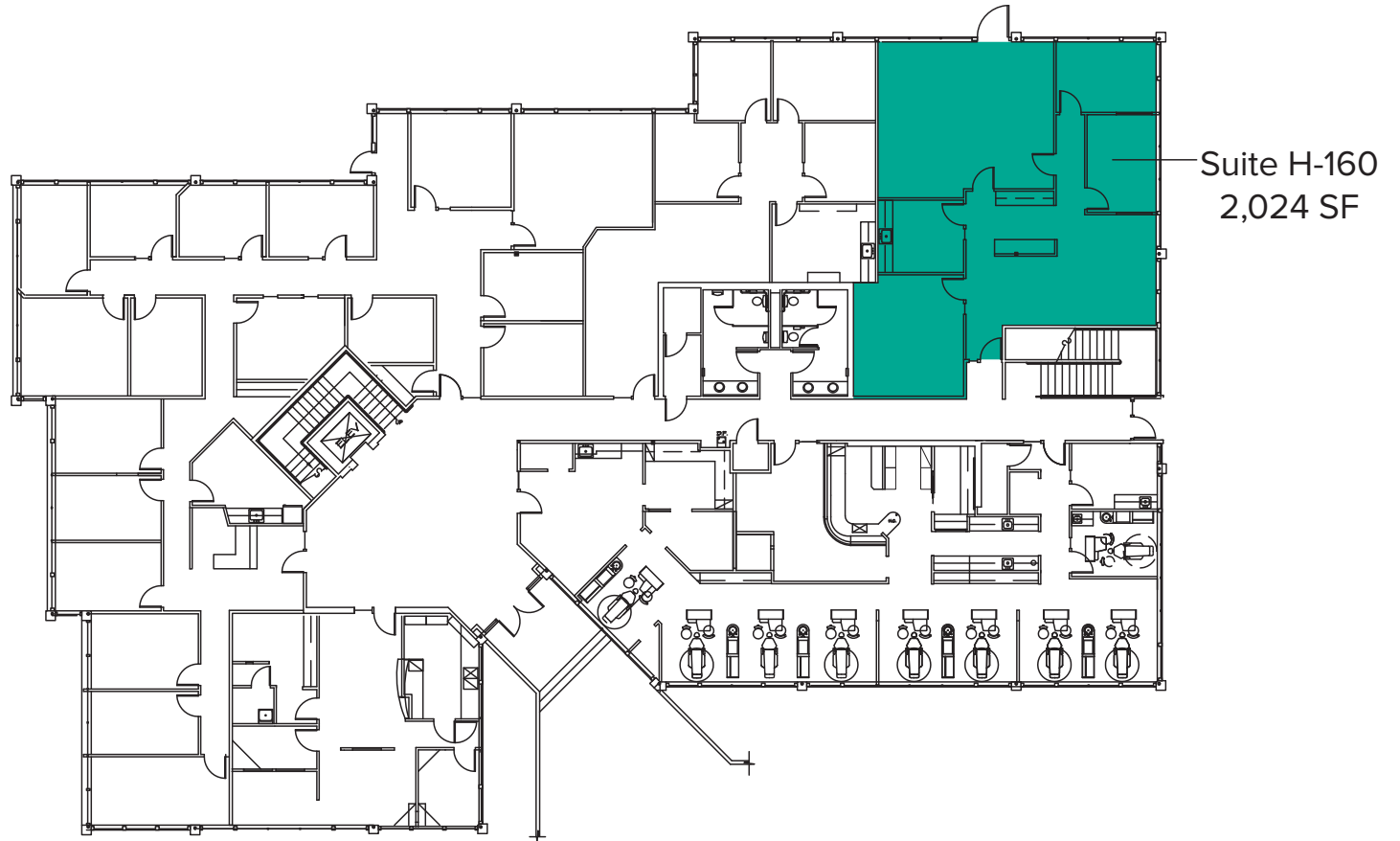
Notes: Second Floor Office. 7 Private Offices, Break Room, 1 Conference Room, and Reception Space. **Available Now.**



# BUILDING H (22525) FLOOR PLAN

| Suite | Square Feet | Rate            |
|-------|-------------|-----------------|
| H-160 | 2,024 SF    | \$28.00/SF, NNN |

Notes: Direct and Lobby Entrances. 2 Private Offices, 1 Conference Room, Break Room, and Open Work Space. **Available with 30 days' notice.**





# SITE PLAN





# LOCATION MAP

