

# KENT BUSINESS CAMPUS

841 N Central Avenue, Kent, WA 98032

## Retail on North Central Ave

### 2,947 SF

#### FEATURES:

- **\$18.50/SF, NNN**
- **TI Available**
- Custom Suite Sizes Ready for Build Out
- Retail Frontage on N Central Ave
- Prominent Signage on N Central Avenue
- Quick Access to SR 167, SR 516 & Downtown Kent
- Concrete, Steel & Glass Construction



Rosen~Harbottle Commercial Real Estate | P.O. Box 5003 Bellevue, WA 98009-5003  
phone: (425) 454-3030 fax: (425) 454-6705 | [www.rosenharbottle.com](http://www.rosenharbottle.com)

The information provided has been obtained from sources believed reliable. While we do not doubt its accuracy, we have not verified and make no guarantee, warranty or representation about it. It is your sole responsibility to independently confirm its accuracy and completeness.

For more information, contact:

**ROSEN~HARBOTTLE COMMERCIAL REAL ESTATE**

**Grant Rubenstein**

(425) 289-2220

[grant@rosenharbottle.com](mailto:grant@rosenharbottle.com)

**Connor Feuerberg**

(425) 279-7943

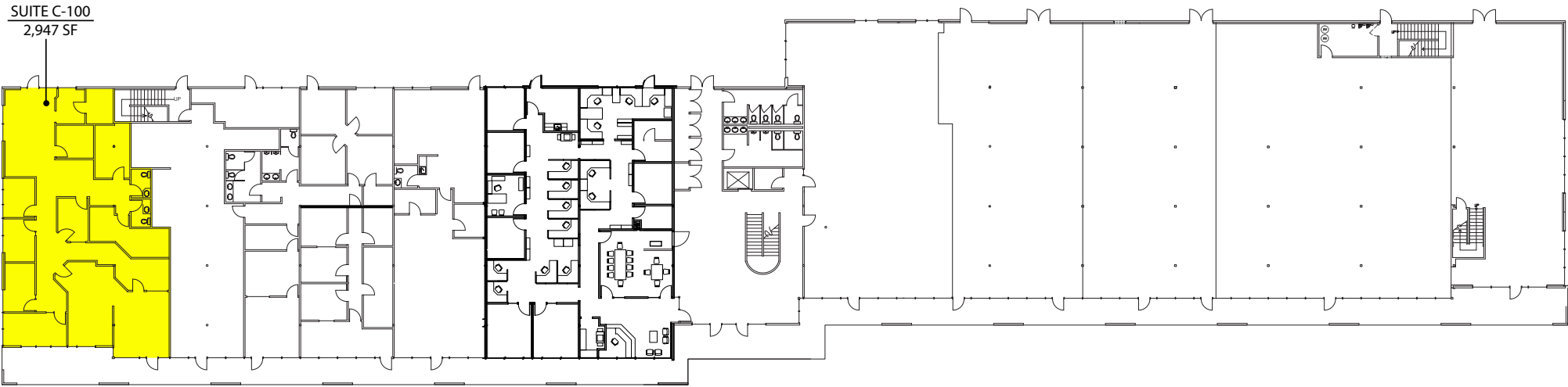
[connor@rosenharbottle.com](mailto:connor@rosenharbottle.com)

[www.rosenharbottle.com](http://www.rosenharbottle.com)

# KENT BUSINESS CAMPUS

841 N Central Avenue, Kent, WA 98032

## Building C - First Floor



N Central Avenue

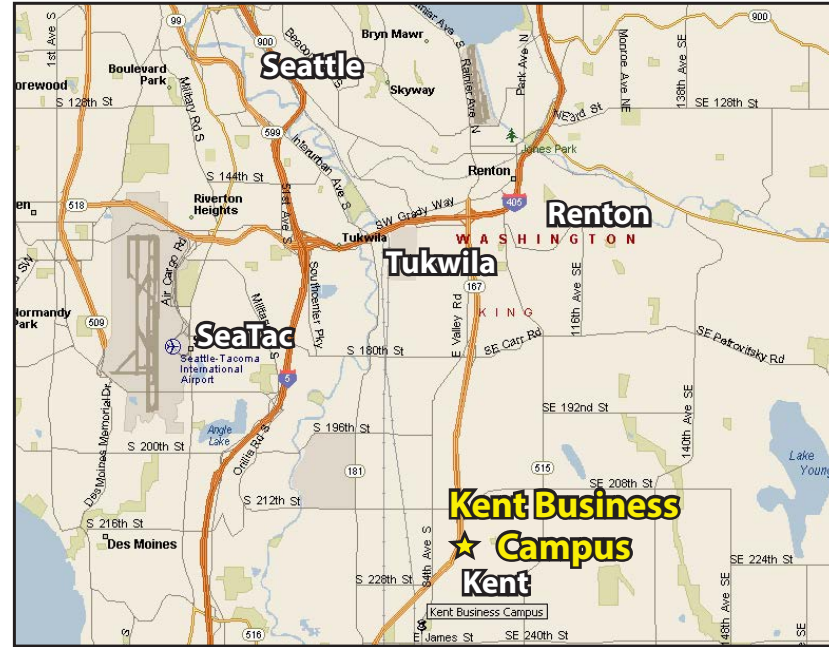
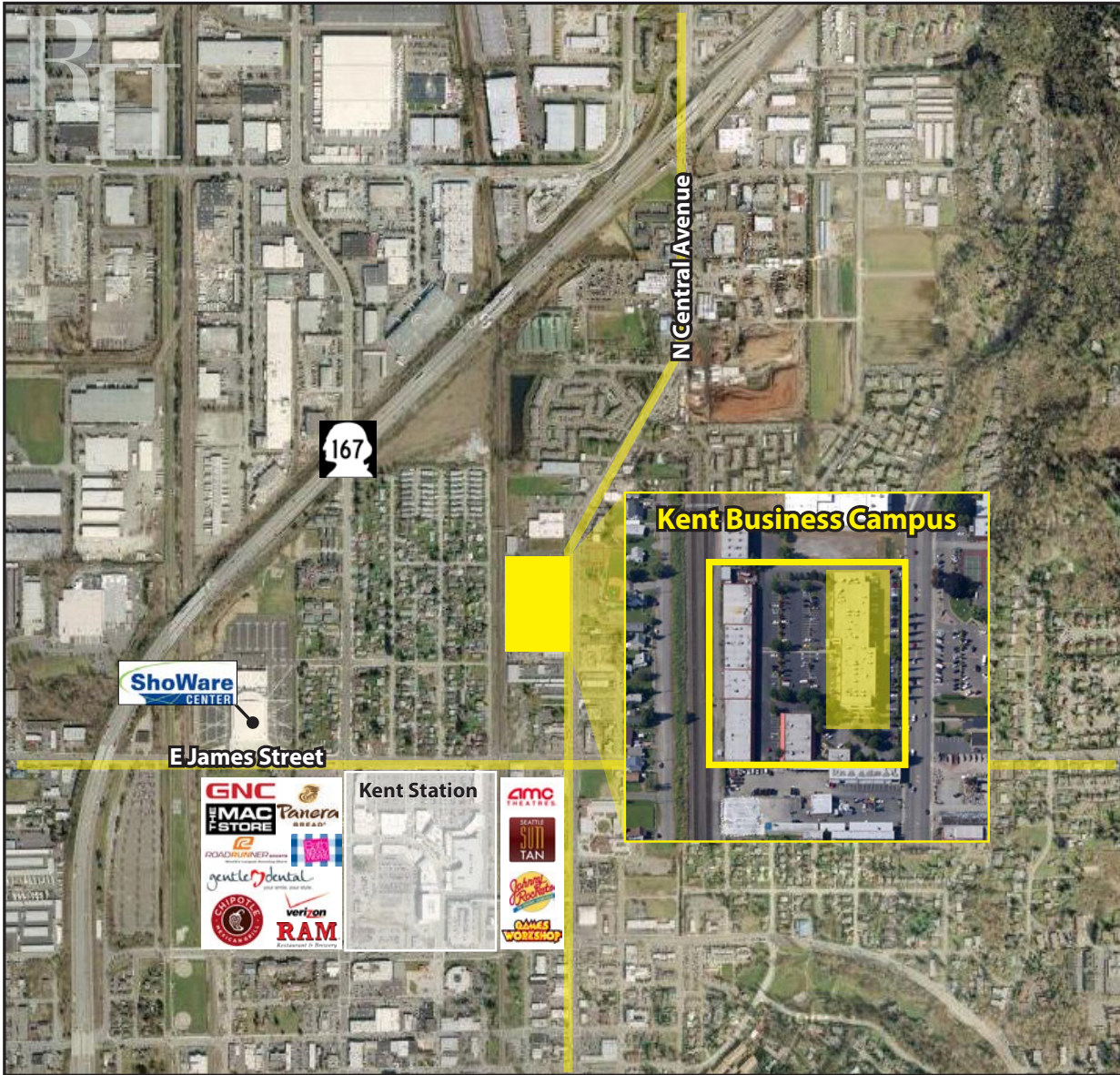
Rosen-Harbottle Commercial Real Estate | P.O. Box 5003 Bellevue, WA 98009-5003  
phone: (425) 454-3030 fax: (425) 454-6705 | [www.rosenharbottle.com](http://www.rosenharbottle.com)

The information provided has been obtained from sources believed reliable. While we do not doubt its accuracy, we have not verified and make no guarantee, warranty or representation about it. It is your sole responsibility to independently confirm its accuracy and completeness.



# KENT BUSINESS CAMPUS

841 N Central Avenue, Kent, WA 98032



For more information, contact:

**ROSEN~HARBOTTLE COMMERCIAL REAL ESTATE**

[www.rosenharbottle.com](http://www.rosenharbottle.com)

**Grant Rubenstein**

(425) 289-2220

[grant@rosenharbottle.com](mailto:grant@rosenharbottle.com)

**Connor Feuerberg**

(425) 279-7943

[connor@rosenharbottle.com](mailto:connor@rosenharbottle.com)

Rosen-Harbottle Commercial Real Estate | P.O. Box 5003 Bellevue, WA 98009-5003

phone: (425) 454-3030 fax: (425) 454-6705 | [www.rosenharbottle.com](http://www.rosenharbottle.com)

The information provided has been obtained from sources believed reliable. While we do not doubt its accuracy, we have not verified and make no guarantee, warranty or representation about it. It is your sole responsibility to independently confirm its accuracy and completeness.