

KENT BUSINESS CENTER

25316 74th Avenue S, Kent, WA 98032



OFFICE & FLEX SPACE

17,568 SF Available

\$1.15/SF/Mo Blended, NNN

FEATURES:

- TI Dollars Available
- HVAC & Improved Lighting Throughout
- 3-Phase Power
- 9.5' - 18' Clear Height
- GL Loading
- 4.3 / 1,000 Parking
- Quick Access to SR 167
- 20 Minutes from Bellevue, Seattle & Tacoma
- Zoned M2, City of Kent



For more information, contact:

ROSEN~HARBOTTLE
COMMERCIAL REAL ESTATE

Brian Stewart

(425) 289-2222

brians@rosenharbottle.com

Grant Rubenstein

(425) 289-2220

grant@rosenharbottle.com

www.rosenharbottle.com

Rosen-Harbottle Commercial Real Estate | P.O. Box 5003 Bellevue, WA 98009-5003
phone: (425) 454-3030 fax: (425) 454-6705 | www.rosenharbottle.com

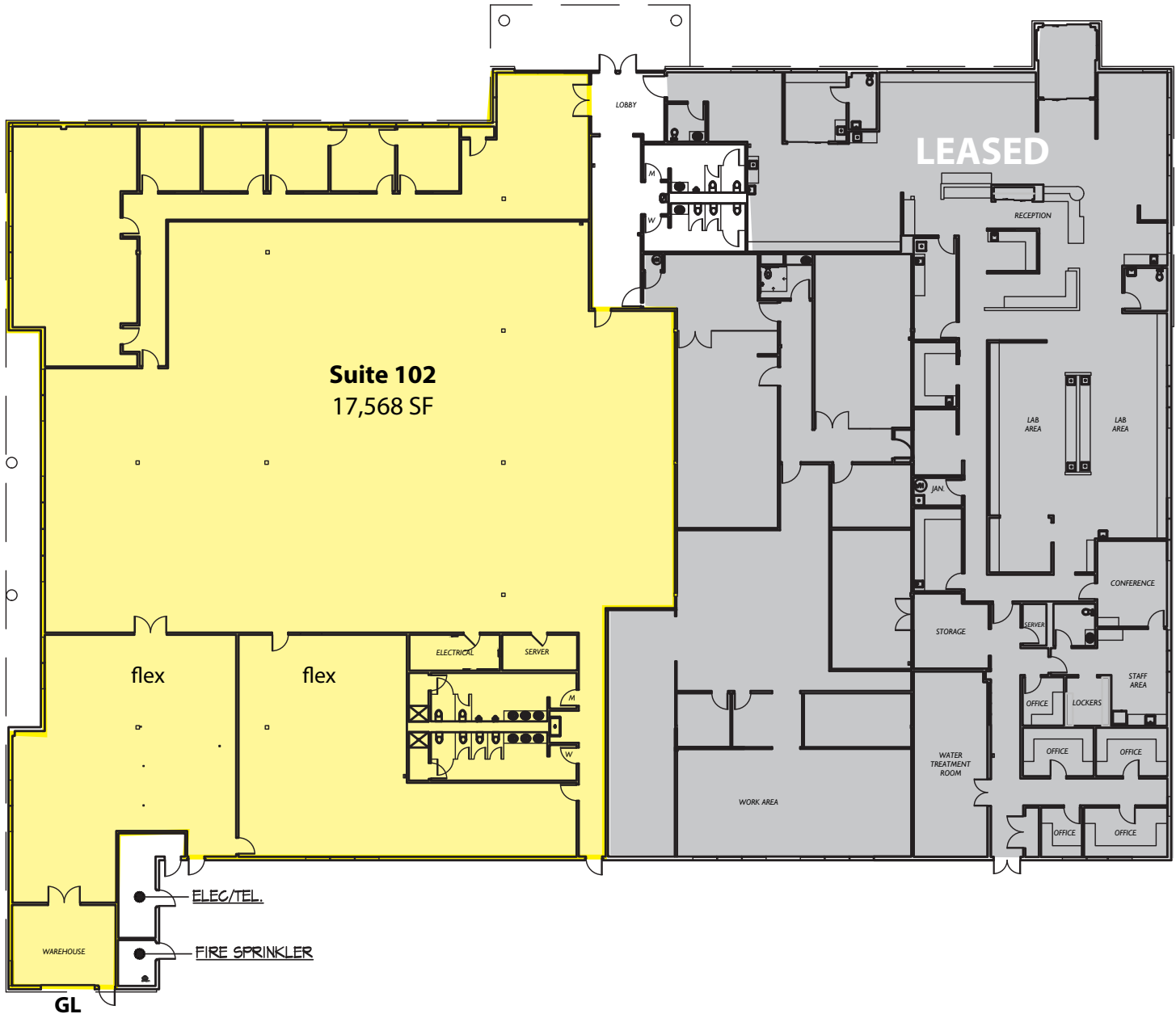
The information provided has been obtained from sources believed reliable. While we do not doubt its accuracy, we have not verified and make no guarantee, warranty or representation about it. It is your sole responsibility to independently confirm its accuracy and completeness.

KENT BUSINESS CENTER

25316 74th Avenue S, Kent, WA 98032

Building C - As Is Floor Plan

Suite	Total SF	Available
102	17,568	30 days

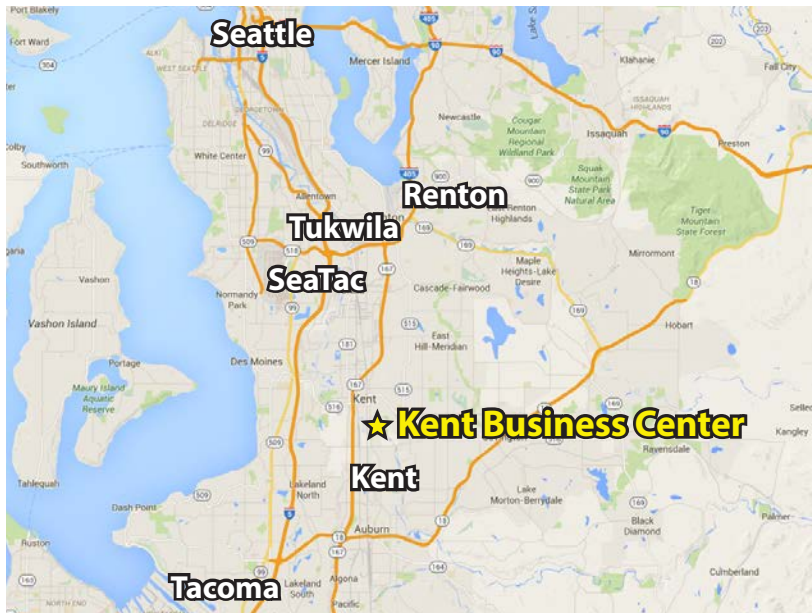
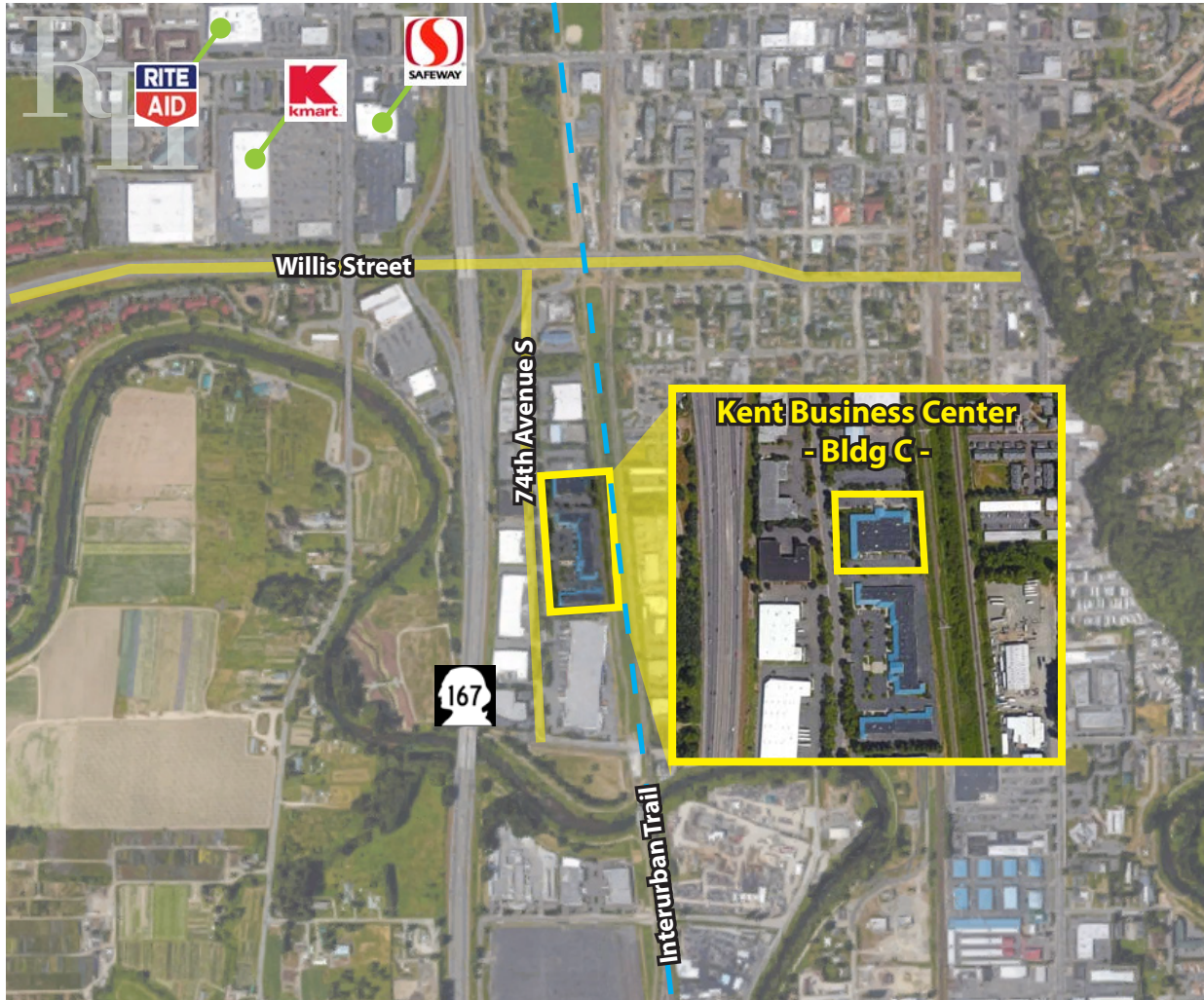


Rosen-Harbottle Commercial Real Estate | P.O. Box 5003 Bellevue, WA 98009-5003
phone: (425) 454-3030 fax: (425) 454-6705 | www.rosenharbottle.com

The information provided has been obtained from sources believed reliable. While we do not doubt its accuracy, we have not verified and make no guarantee, warranty or representation about it. It is your sole responsibility to independently confirm its accuracy and completeness.

KENT BUSINESS CENTER

25316 74th Avenue S, Kent, WA 98032



Rosen-Harbottle Commercial Real Estate | P.O. Box 5003 Bellevue, WA 98009-5003
phone: (425) 454-3030 fax: (425) 454-6705 | www.rosenharbottle.com

The information provided has been obtained from sources believed reliable. While we do not doubt its accuracy, we have not verified and make no guarantee, warranty or representation about it. It is your sole responsibility to independently confirm its accuracy and completeness.