

BEAR CREEK PLAZA

19011 Woodinville-Snohomish Road NE, Woodinville, WA 98072



**IDEAL USES: OFFICE, CHURCH OR ASSEMBLY,
DAYCARE, RECREATION, ETC.**

1,761 SF - 8,404 SF Available

BUILDING FEATURES:

- Excellent Freeway Access to SR-522 & I-405
- Building Signage Facing SR 522 & Woodinville-Snohomish Road
- Elevator
- Abundant Parking
- Sprinklered Building
- Close to Downtown Woodinville, Costco & Wineries
- Rates Shown on Page 2

ROSEN | HARBOTTLE
RH

For more information, contact:

**ROSEN~HARBOTTLE
COMMERCIAL REAL ESTATE**

Caleb Farnworth, CCIM

(425) 289-2235

calebf@rosenharbottle.com

www.rosenharbottle.com

Rosen~Harbottle Commercial Real Estate | P.O. Box 5003 Bellevue, WA 98009-5003
phone: (425) 454-3030 fax: (425) 454-6705 | www.rosenharbottle.com

The information provided has been obtained from sources believed reliable. While we do not doubt its accuracy, we have not verified and make no guarantee, warranty or representation about it. It is your sole responsibility to independently confirm its accuracy and completeness.

BEAR CREEK PLAZA

19011 Woodinville-Snohomish Road NE, Woodinville, WA 98072

SECOND FLOOR

Suite 210 - 8,404 SF

\$17.50/SF, Gross

Available w/ 60 days notice

- Built Out as Church
- Nice Finishes & Efficient Layout
- Corner Suite, Off-Lobby Entrance

Suite 240 - 1,818 SF

\$14.50/SF, Gross

Available 7/1/2016

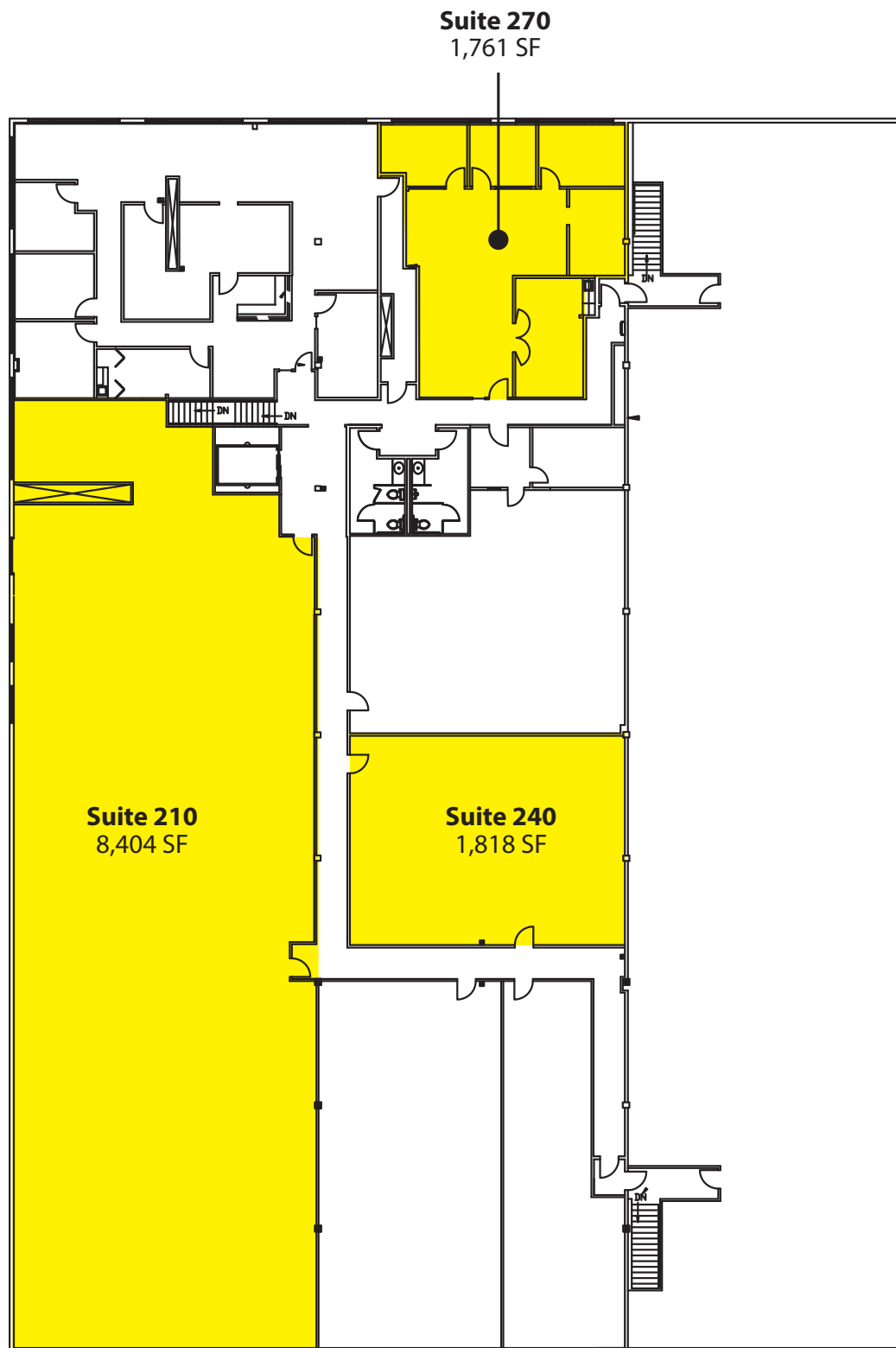
- Open Space
- Interior, Vaulted Ceiling
- 3 Skylights

Suite 270 - 1,761 SF

\$19.50/SF, Gross

Available 2/1/2016

- 3 POs, Reception, Open Area
- Conference Room, Storage
- Kitchenette
- Great Natural Light



Rosen~Harbottle Commercial Real Estate | P.O. Box 5003 Bellevue, WA 98009-5003
phone: (425) 454-3030 fax: (425) 454-6705 | www.rosenharbottle.com

The information provided has been obtained from sources believed reliable. While we do not doubt its accuracy, we have not verified and make no guarantee, warranty or representation about it. It is your sole responsibility to independently confirm its accuracy and completeness.

BEAR CREEK PLAZA

19011 Woodinville-Snohomish Road NE, Woodinville, WA 98072



For more information, contact:

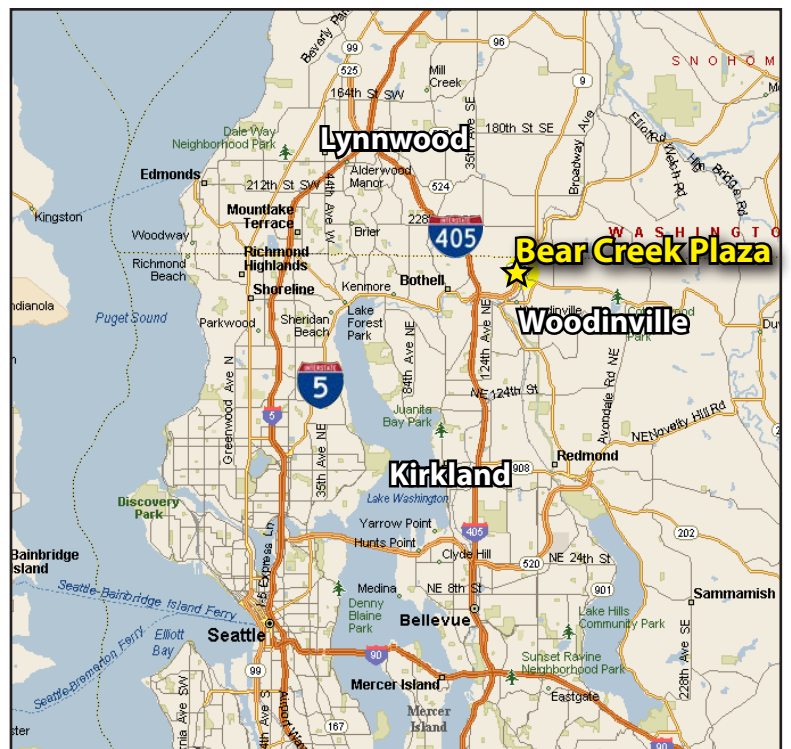
**ROSEN~HARBOTTLE
COMMERCIAL REAL ESTATE**

Caleb Farnworth, CCIM

(425) 289-2235

calebf@rosenharbottle.com

www.rosenharbottle.com



Rosen~Harbottle Commercial Real Estate | P.O. Box 5003 Bellevue, WA 98009-5003
phone: (425) 454-3030 fax: (425) 454-6705 | www.rosenharbottle.com

The information provided has been obtained from sources believed reliable. While we do not doubt its accuracy, we have not verified and make no guarantee, warranty or representation about it. It is your sole responsibility to independently confirm its accuracy and completeness.