

# BONNEY LAKE VILLAGE SHOPPING CENTER

21107-21291 State Route 410 E, Bonney Lake, WA 98391

## ENDCAP - SUITES E-1 & E-2

UP TO 10,951 SF AVAILABLE

Suite	SF	Rent/SF
E1	5,134 SF	\$11.00/SF
E2	5,078-5,817 SF	\$16.00/SF
Contiguous	10,951 SF	\$11.00/SF

### Ideal Uses:

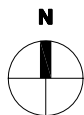
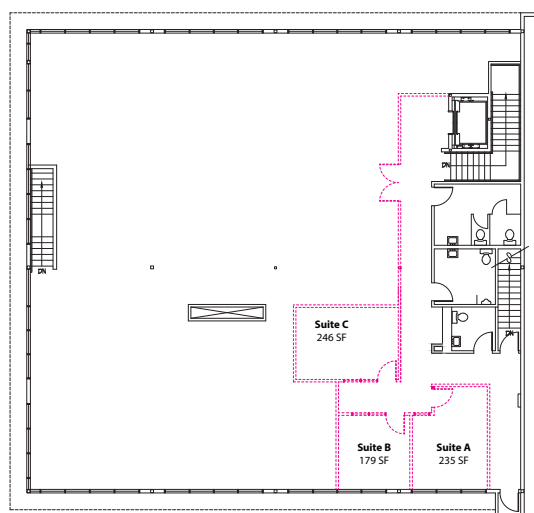
- Office, Medical, Daycare, Tutoring, Martial Arts

### Features:

- Recently Renovated Space
  - New Carpet & Paint
  - Updated Kitchenette
- Great Natural Light
- Sprinklered
- Outdoor Play Area Available

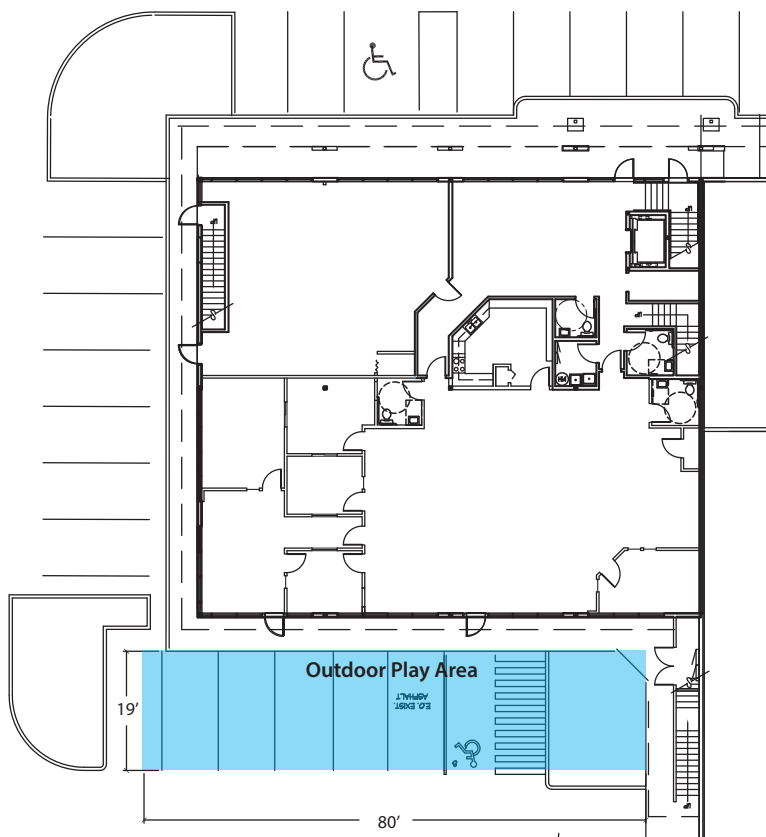
### Suite E2 - Second Floor

5,078 SF - 5,817 SF



### Suite E1 - First Floor

5,134 SF



Rosen~Harbottle Commercial Real Estate | P.O. Box 5003 Bellevue, WA 98009-5003  
phone: (425) 454-3030 fax: (425) 454-6705 | [www.rosenharbottle.com](http://www.rosenharbottle.com)

The information provided has been obtained from sources believed reliable. While we do not doubt its accuracy, we have not verified and make no guarantee, warranty or representation about it. It is your sole responsibility to independently confirm its accuracy and completeness.