

# HILLSIDE PLAZA SHOPPING CENTER

2000 - 2222 S 314<sup>th</sup> Street, Federal Way, WA 98003



## FLEXIBLE SPACE CONFIGURATIONS!

1,500 SF - 14,645 SF Available

\$18.50/SF, NNN

### FEATURES:

- Available Space Can Accommodate Most Size Requirements
- Blocks Away from The Commons, I-5, Hwy 99 & Transit Center
- Directly Adjacent to Performing Arts & Events Center - Now Open
- Great Tenant Mix: Gene Juarez, CSL Plasma, Cortiva Institute, AAA, Nail Salon & Beauty Salon
- Densely Populated Surrounding Neighborhoods



**Grant Rubenstein**

(425) 289-2220

grant@rosenharbottle.com

**Connor Feuerberg**

(425) 279-7943

connor@rosenharbottle.com

**RH** ROSEN  
HARBOTTLE  
COMMERCIAL REAL ESTATE



**SOUTH 312TH ST.**

**20TH AVE SOUTH**

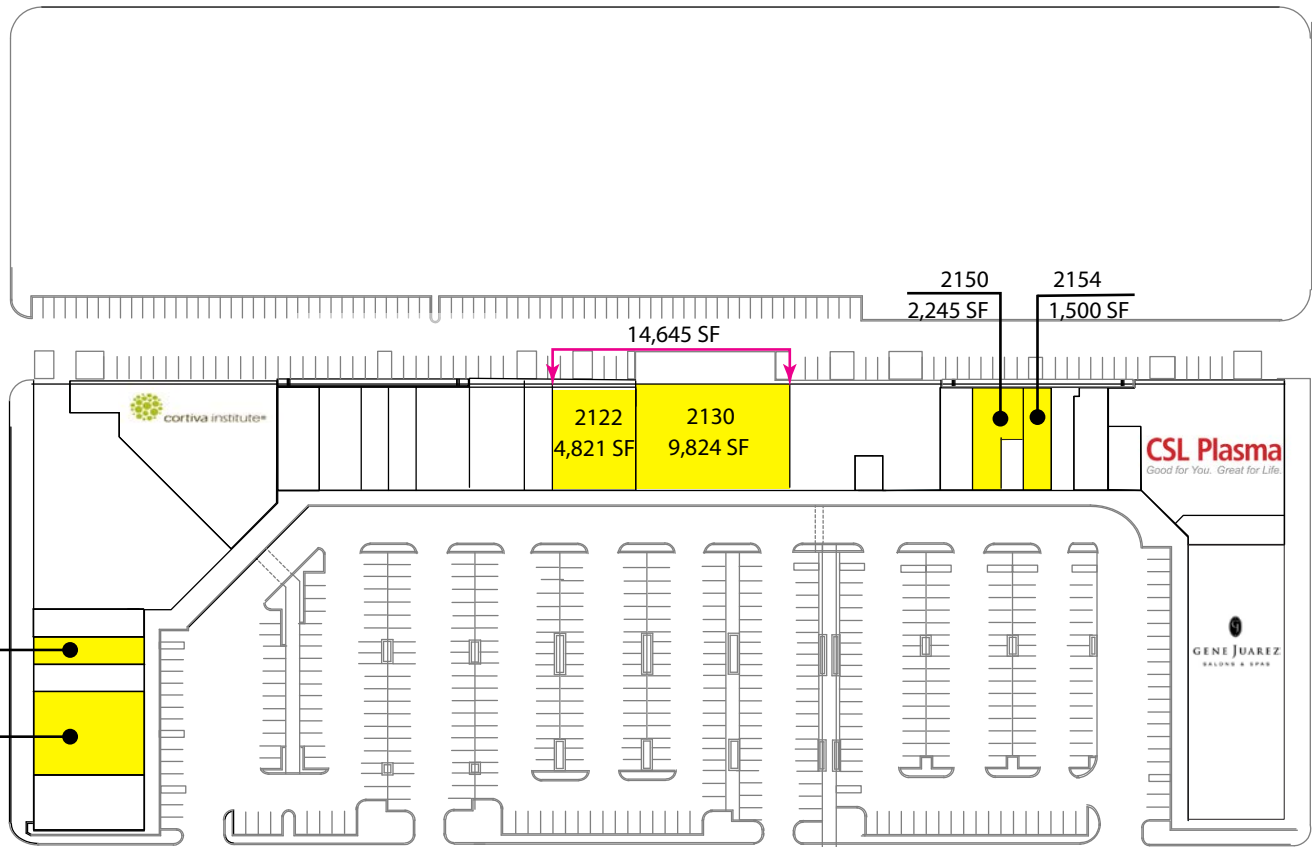
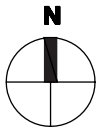
**23RD AVE SOUTH**

2014  
1,623 SF  
2004  
4,865 SF

**SOUTH 314TH ST.**

**Federal Way Performing Arts  
and Events Center  
- NOW Open -**

**Federal Way  
Transit Center**



# Retail Trade Map



The information provided has been obtained from sources believed reliable. While we do not doubt its accuracy, we have not verified and make no guarantee, warranty or representation about it. It is your sole responsibility to independently confirm its accuracy and completeness.